

NRC DISTRIBUTION FOR PART 50 DOCKET MATERIAL

FILE NUMBER  
INCIDENT REPORT

TO:  
  
Mr. James G. Keppler

FROM:  
Commonwealth Edison Company  
Morris, Ill.  
B. B. Stephensen

DATE OF DOCUMENT  
5/13/77

DATE RECEIVED  
6/8/77

LETTER  
 ORIGINAL  
 COPY

NOTORIZED  
 UNCLASSIFIED

PROP  
INPUT FORM

NUMBER OF COPIES RECEIVED  
**1 SIGNED**

DESCRIPTION

**ACKNOWLEDGED**

PLANT NAME: **DO NOT REMOVE**  
Dresden Unit No. 2 (1-P)  
RJL

ENCLOSURE

Licensee Event Report (RO 50-237/1977-17) on 4/13/77 concerning the ball isolation valve on "E" Traversing Incore Probe System Guide Tube failing to open from the control room as required during a surveillance.

(2-P)

NOTE: IF PERSONNEL EXPOSURE IS INVOLVED SEND DIRECTLY TO KREGER/J. COLLINS

FOR ACTION/INFORMATION

BRANCH CHIEF:	<b>ZIEMANN</b>
W/3 CYS FOR ACTION	
LIC. ASST.:	<b>DIGGS</b>
W/1 CYS	
ACRS 16 CYS HOLDING/SENT	<b>AS PART B</b>

INTERNAL DISTRIBUTION

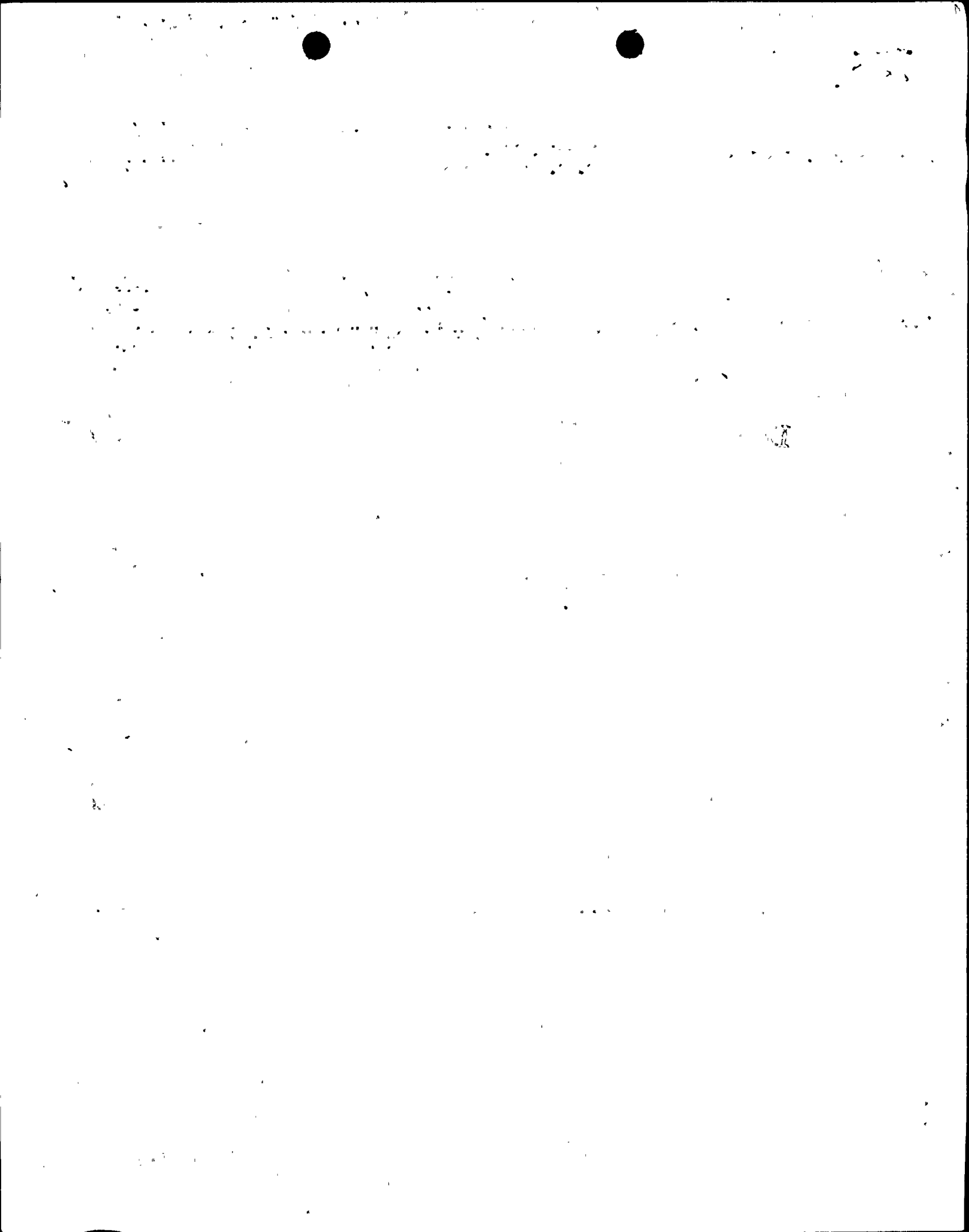
<b>REG FILE</b>			
NRC PDR			
I & E (2)			
MIPC			
SCHROEDER/IPPOLITO			
HOUSTON			
NOVAK/CHECK			
GRIMES			
BUTLER			
HANAUER			
TEDESCO/MACCARY			
EISENHUT			
BAER			
SHAO			
VOLLMER/BUNGH			
KREGER/J. COLLINS			

EXTERNAL DISTRIBUTION

LPDR: <b>MORRIS, ILL.</b>	
TIC:	
NSIC:	

CONTROL NUMBER

**771600003**





**Commonwealth Edison**  
Dresden Nuclear Power Station  
R.R. #1  
Morris, Illinois 60450  
Telephone 815/942-2920

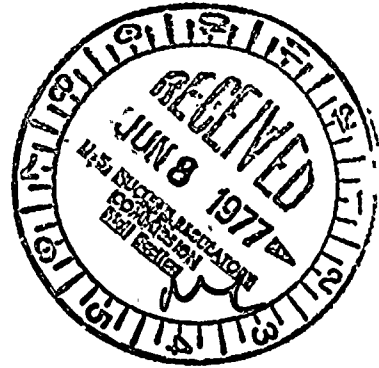
*D. Lamham*

BBS Ltr. #77-773

May 13, 1977

Mr. James G. Keppler, Regional Director  
Directorate of Regulatory Operations - Region III  
U.S. Nuclear Regulatory Commission  
799 Roosevelt Road  
Glen Ellyn, Illinois 60137

Regulatory Docket File



Enclosed please find Reportable Occurrence report number 50-237/1977-17.  
This report is being submitted to your office in accordance with the  
Dresden Nuclear Power Station Technical Specifications, Section 6.6.B.

*B. B. Stephenson for 5/13*

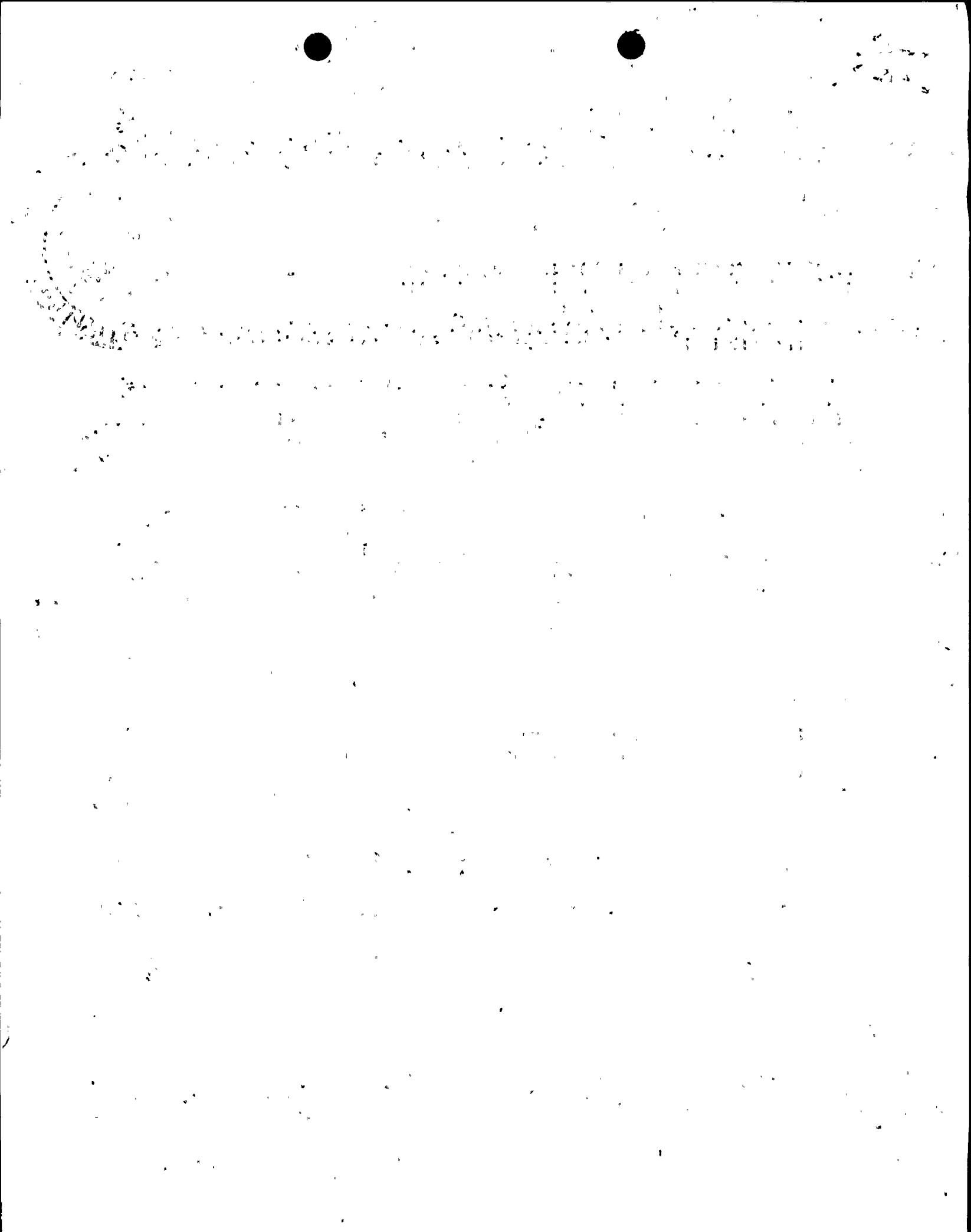
B.B. Stephenson  
Station Superintendent  
Dresden Nuclear Power Station

BBS;bc

Enclosure

cc: Director of Inspection & Enforcement  
Director of Management Information & Program Control  
File/NRC

771600003



# LICENSEE EVENT REPORT

CONTROL BLOCK: 

--	--	--	--	--	--	--	--	--	--	--

[PLEASE PRINT ALL REQUIRED INFORMATION]

LICENSEE NAME: 

01	I	L	D	R	S	2
----	---	---	---	---	---	---

 LICENSE NUMBER: 

0	0	-	0	0	0	0	0	0	-	0	0
---	---	---	---	---	---	---	---	---	---	---	---

 LICENSE TYPE: 

4	1	1	1	1
---	---	---	---	---

 EVENT TYPE: 

0	3
---	---

REPORT TYPE: 

I
---

 REPORT SOURCE: 

L
---

 DOCKET NUMBER: 

0	5	0	-	0	2	3	7
---	---	---	---	---	---	---	---

 EVENT DATE: 

0	4	1	3	7	7
---	---	---	---	---	---

 REPORT DATE: 

0	5	1	3	7	7
---	---	---	---	---	---

## EVENT DESCRIPTION

02 During normal operation, the ball isolation valve on "E" Traversing Incore Probe (TIP)

03 System Guide Tube failed to open from the Control Room as required during a surveillance

04 The remaining TIP ball valves were exercised satisfactorily per procedure DOS-1600-8.

05 Since the valve failed in the closed position, primary containment was not violated.

06 If the ball valve had failed in the open position, an operable squib detonated

SYSTEM CODE: 

S	D
---	---

 CAUSE CODE: 

E
---

 COMPONENT CODE: 

V	A	L	V	E	X
---	---	---	---	---	---

 PRIME COMPONENT SUPPLIER: 

N
---

 COMPONENT MANUFACTURER: 

G	0	8	0
---	---	---	---

 VIOLATION (cont): 

N
---

## CAUSE DESCRIPTION

08 Failure occurred because of the buildup in the valve of material which apparently

09 rubbed off the TIP probe and wire drive. The material accumulated between the

10 moving parts of the valve and valve body, causing minor interference. (cont)

FACILITY STATUS: 

E
---

 % POWER: 

0	7	3
---	---	---

 OTHER STATUS: 

NA
----

 METHOD OF DISCOVERY: 

B
---

 DISCOVERY DESCRIPTION: 

NA
----

FORM OF ACTIVITY RELEASED: 

Z
---

 CONTENT OF RELEASE: 

Z
---

 AMOUNT OF ACTIVITY: 

NA
----

 LOCATION OF RELEASE: 

NA
----

## PERSONNEL EXPOSURES

NUMBER: 

0	0	0
---	---	---

 TYPE: 

Z
---

 DESCRIPTION: 

NA
----

## PERSONNEL INJURIES

NUMBER: 

0	0	0
---	---	---

 DESCRIPTION: 

NA
----

## OFFSITE CONSEQUENCES

15 NA

## LOSS OR DAMAGE TO FACILITY

TYPE: 

Z
---

 DESCRIPTION: 

NA
----

## PUBLICITY

17 NA

## ADDITIONAL FACTORS

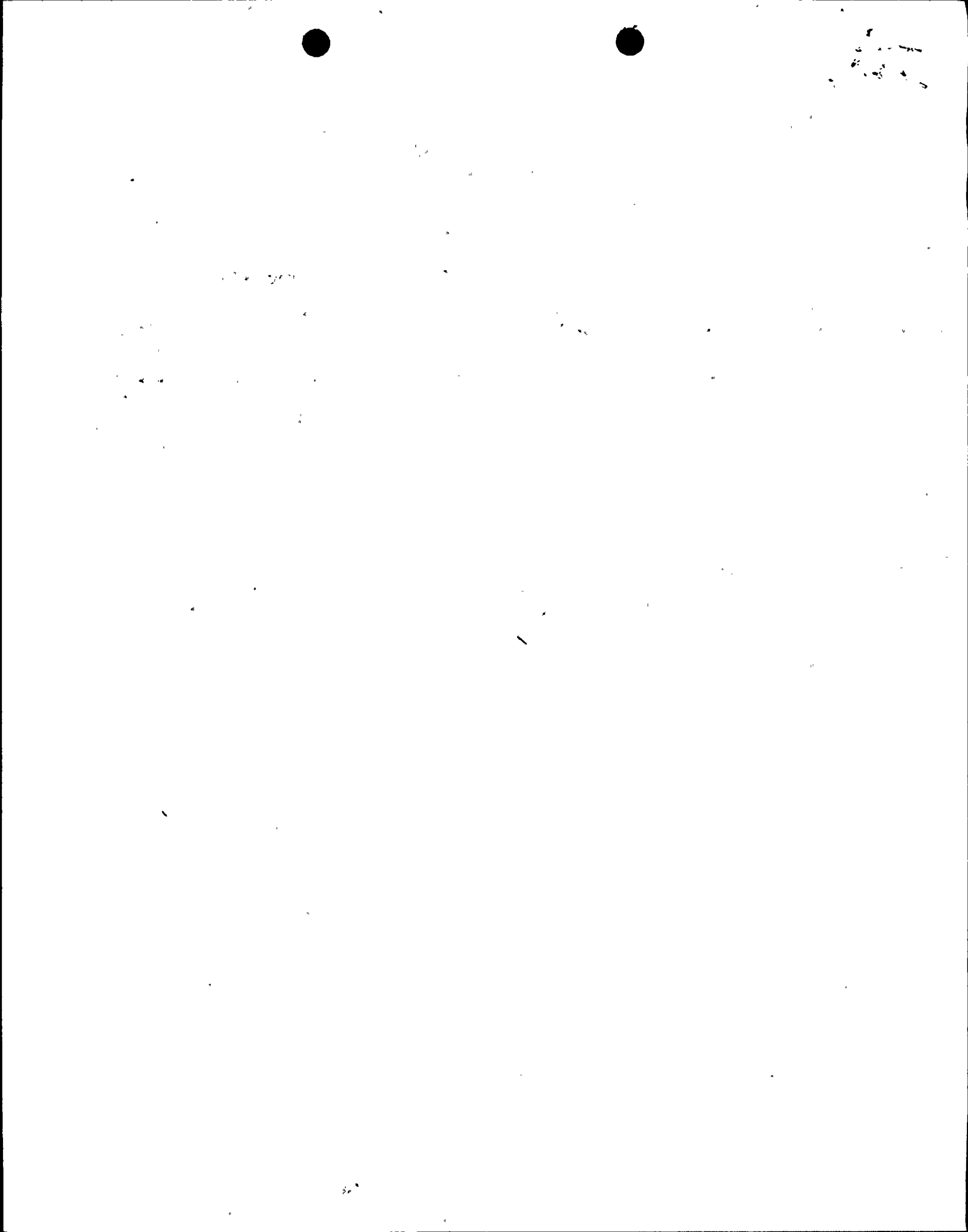
19 NA

19

NAME: Paul J. Kolbck

MAY 17 1977

PHONE: Ext. 265



Event Description (cont)

shear valve would have been available as a backup to assure Primary Containment integrity. The TIP ball valves on both Dresden Units 2 and 3 were replaced with improved valves in 1975. This is the first failure of these valves since that modification (50-237/1977-17).

Cause Description (cont)

The valve was inspected and attempts were made to trouble shoot the problem. It was tested again but it continued to operate erratically. The valve was then replaced and the new valve tested satisfactorily. The valve is a 1/4 inch rotating ball, solenoid actuated, designed to seal against a 0-125 psig air-water mixture, manufactured by General Pneumatic Corporation, cat. no. 608 KWJ06 revision 3.

60. 900 1 10 10 20

RECEIVED DOCUMENT  
PROCESSING UNIT

1971 JUN 7 AM 10 39