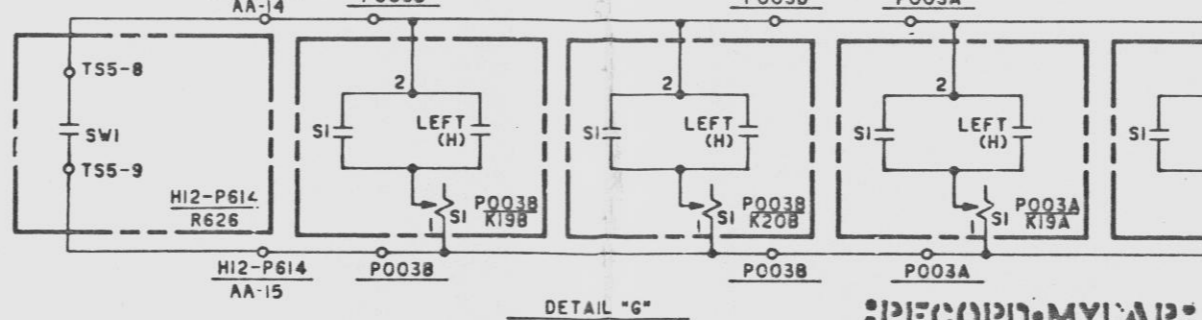
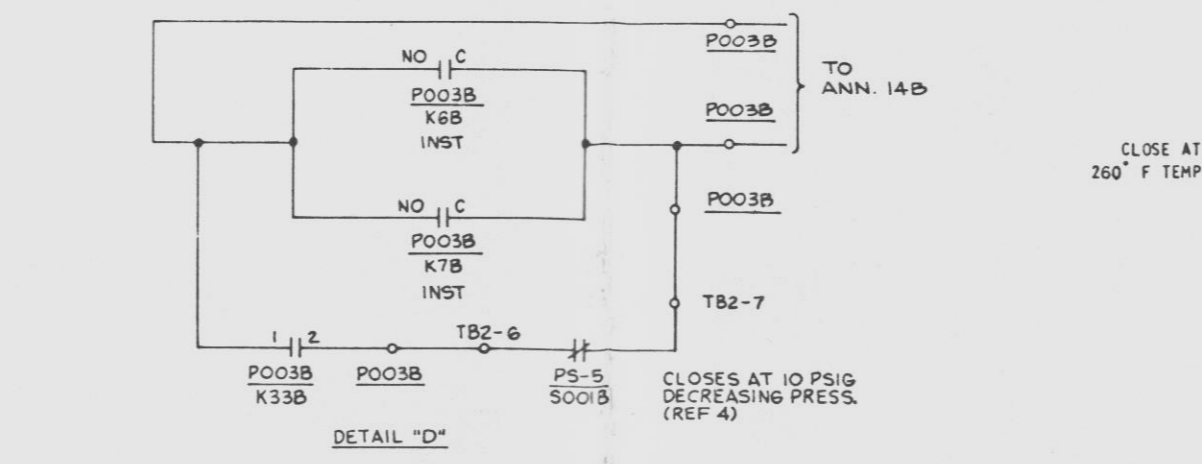
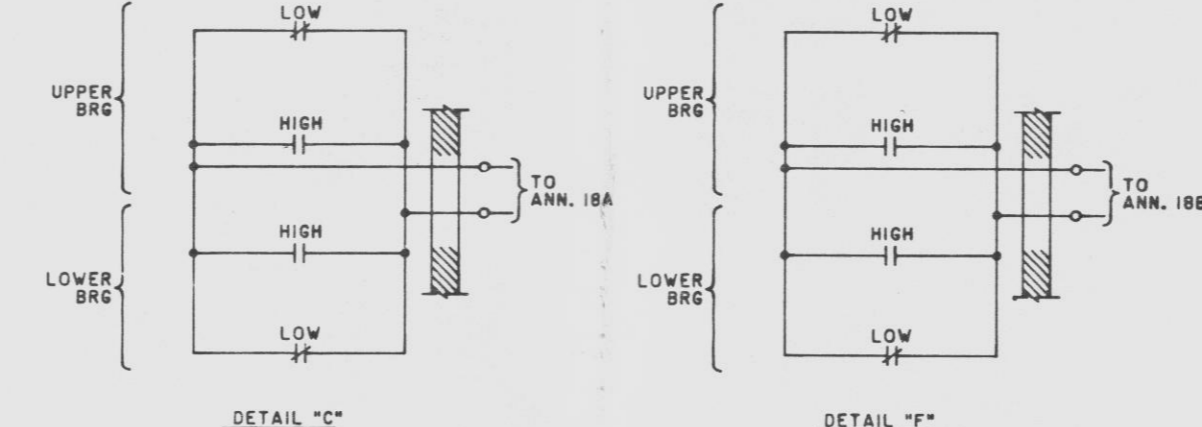


| NO. | INPUT H12-P680-04A                                      | IND |
|-----|---|-----|
| 18  | B RECIRC MG GENERATOR LOCKOUT TRIP (4-1)                | R   |
| 28  | B RECIRC MG CONTROL POWER FAILURE (5-1)                 | W   |
| 6B  | B RECIRC SYS MOV OVERLOAD (2-7)                         | W   |
| 48  | B RECIRC MG SPEED CONTROL SIGNAL FAILURE (3-1)          | W   |
| 58  | B RECIRC MG INCOMPLETE STARTUP SEQUENCE (4-2)           | W   |
| 6B  | RECIRC SYS B DISCHARGE VALVE IN TEST (5-5)              | R   |
| 78  | B RECIRC MG AUX LUBE OIL PUMP NOT IN AUTO/RUN (4-5)     | W   |
| 88  | B RECIRC FLOW LIMIT (4-3)                               | W   |
| 98  | B RECIRC MG GENERATOR FIELD GROUND (6-2)                | W   |
| 128 | B RECIRC MG FLUID DRIVE OIL HI/LO TEMP (6-3)            | W   |
| 148 | RECIRC MG FLUID DRIVE LUBE OIL LO PRESS (4-4)           | W   |
| 158 | B RECIRC MG DRIVE MOTOR TRIP (BY AE) (5-3)              | R   |
| 178 | B RECIRC PUMP MOTOR HI VIBRATION (4-8)                  | W   |
| 188 | B RECIRC PUMP MOTOR OIL HI/LO LEVEL (5-5)               | W   |
| 198 | B RECIRC PUMP SEAL LEAKAGE HI FLOW (4-7)                | W   |
| 208 | B RECIRC PUMP SEAL STAGE HI/LO FLOW (5-7)               | W   |
| 218 | B RECIRC PUMP SEAL COOLING WATER LO FLOW (6-6)          | W   |
| 228 | B RECIRC MG FLUID DRIVE SCOOP TUBE LOCK (5-4)           | W   |
| 238 | B RECIRC MG OIL MIST ELIMINATOR HI P (6-8)              | W   |
| 258 | B RECIRC PUMP MOTOR COOLING WATER LEAK (5-6)            | W   |
| 268 | B RECIRC PUMP MOTOR WINDING COOLING WATER LO FLOW (4-6) | W   |
| 278 | B RECIRC MG DRIVE MOTOR INTERNAL AIR HI TEMP (6-4)      | W   |
| 288 | B RECIRC MG GENERATOR INTERNAL AIR HI TEMP (6-5)        | W   |
| 298 | B RECIRC PUMP HI PRESS/LO LEVEL TRIP (4-10)             | R   |



UNCONTROLLED DOCUMENT FOR REFERENCE ONLY

LINE CODES: 90-98, 101-112, 114-123, 125-144, 146, 221, 222

| NO. | DATE    | BY | DESCRIPTION |
|-----|---------|----|-------------|
| 5   | NJ07299 |    |             |
| 6   | NJ15532 |    |             |
| 7   | NJ24577 |    |             |
| 9   | NJ24018 |    |             |

| NO. | DATE | BY | DESCRIPTION |
|-----|------|----|-------------|
| 1   |      |    |             |
| 2   |      |    |             |
| 3   |      |    |             |

Control # 52-387  
Control # 830450245-2207  
Date 3-29-83 of Document  
REGULATORY DOCKET FILE

30X1

RECORD-MYLAR UNIT 2

FF116510