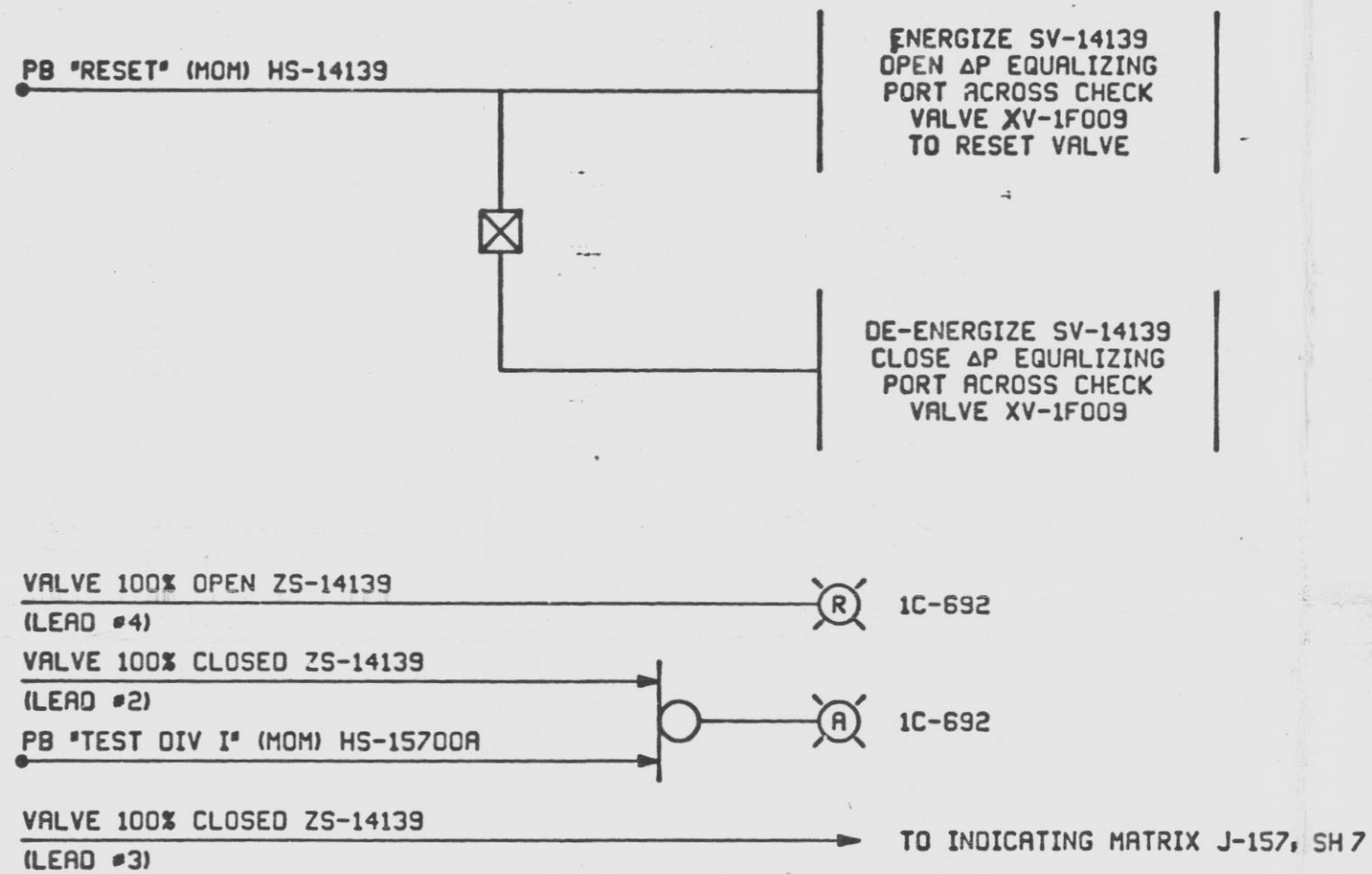
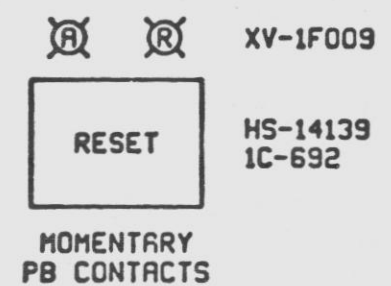


This drawing and the design it covers are the property of BECHTEL. They are merely loaned and on the borrower's express agreement that they will not be reproduced, copied, loaned, exhibited, or used except in the limited way and private use permitted by any written consent given by the lender to the borrower.



FOR VALVE SCHEDULE SEE J-157, SHEETS 6A AND 6B



REFERENCE DWGS.	
BECHTEL	PL
M-141	E-106246
M-142	E-106247
M-143	E-106248
M-144	E-106249
M-149	E-106254
M-151	E-106256
M-152	E-106257
M-155	E-106260
M-157	E-106262
M-161	E-106266
J-157	B-103447

PRC
APERTURE
CARD
UNCONTROLLED DOCUMENT
FOR REFERENCE ONLY

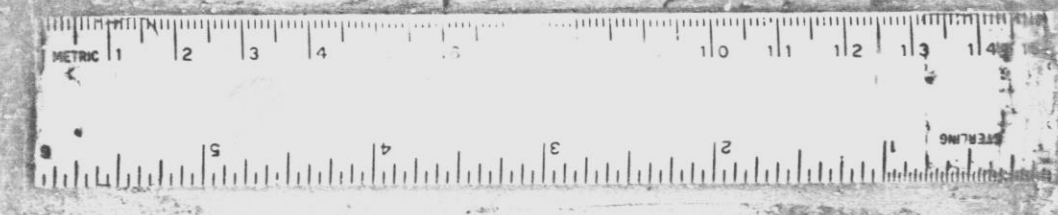
ISSUED AS BUILT	REVISED PER DCR-42	DATE	BY
ISSUED FOR CONSTR.	REVISIONS	DATE	BY
PENNSYLVANIA POWER & LIGHT COMPANY ALLENTOWN, PENNSYLVANIA SUSQUEHANNA STEAM ELECTRIC STATION — UNIT 1, UNIT 2 BECHTEL — SAN FRANCISCO			
LOGIC DIAGRAM CONTAINMENT ATMOS CONTROL EXCESS FLOW CHECK VALVES			
JOB No.	DRAWING No.	REV.	
8856	J-157SH 6	2	
			B-103447 S H 6

THIS DOCUMENT IS UNDER PP&L ADMINISTRATIVE CONTROL. NO CHANGES CAN BE MADE WITHOUT PRIOR PP&L APPROVAL.

61240 LGC OGRM CONTAIN ATM CONT W

16X

I certify that the microfilmed image contained on this microform were made in the normal and regular course of business. This is a true, full, correct and complete reproduction and replacement for and/or in lieu of original documents.
 Signature: *J. Lee* Camera Type: MRG I



Doc # 58-387
 Control # 8364050245-34
 Date 3-29-83 of Document
 REGULATORY DOCKET FILE

D