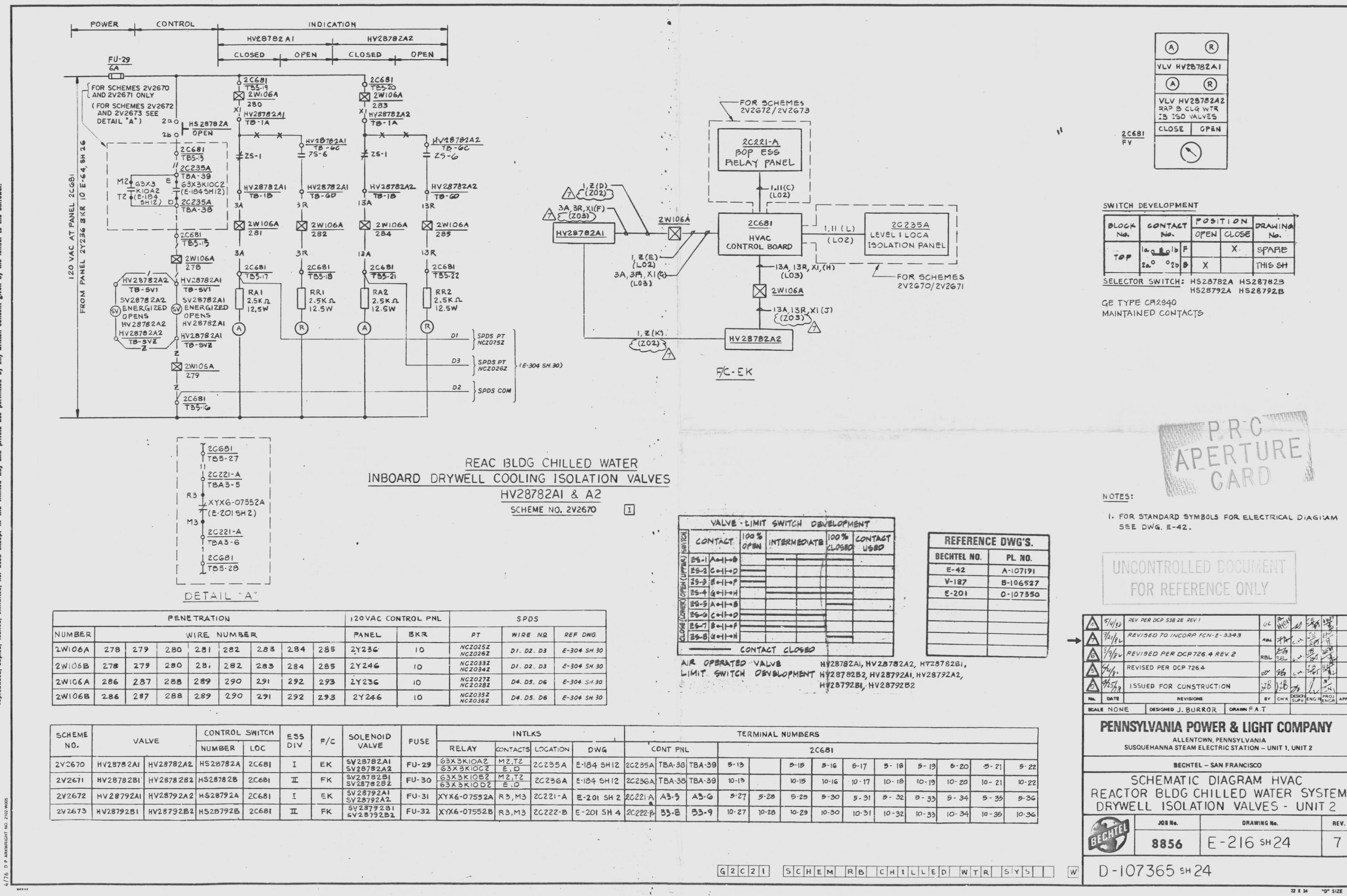
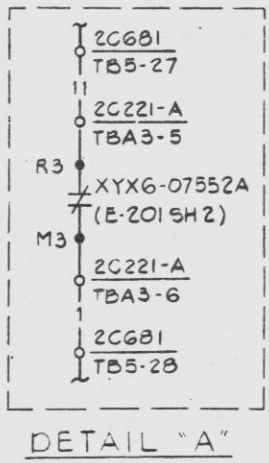


This drawing and the design it covers are the property of BECHTEL. They are merely loaned and on the borrower's express agreement that they will not be reproduced, copied, issued, exhibited, nor used except in the limited way and private use permitted by any written consent given by the lender to the borrower.



REAC BLDG CHILLED WATER  
INBOARD DRYWELL COOLING ISOLATION VALVES  
HV28782A1 & A2  
SCHEME NO. 2V2670



| PENETRATION |                                 | 120VAC CONTROL PNL |     |                    |            | SPDS        |  |  |  |
|-------------|---------------------------------|--------------------|-----|--------------------|------------|-------------|--|--|--|
| NUMBER      | WIRE NUMBER                     | PANEL              | BKR | PT                 | WIRE NO    | REF DWG     |  |  |  |
| 2W106A      | 278 279 280 281 282 283 284 285 | 2Y236              | 10  | NC20252<br>NC20262 | D1, D2, D3 | E-304 SH 30 |  |  |  |
| 2W106B      | 278 279 280 281 282 283 284 285 | 2Y246              | 10  | NC20332<br>NC20342 | D1, D2, D3 | E-304 SH 30 |  |  |  |
| 2W106A      | 286 287 288 289 290 291 292 293 | 2Y236              | 10  | NC20272<br>NC20282 | D4, D5, D6 | E-304 SH 30 |  |  |  |
| 2W106B      | 286 287 288 289 290 291 292 293 | 2Y246              | 10  | NC20352<br>NC20362 | D4, D5, D6 | E-304 SH 30 |  |  |  |

| SCHEME NO. | VALVE     | CONTROL SWITCH |          | ESS DIV | F/C | SOLENOID VALVE | FUSE  | INTLKS                 |                |          | TERMINAL NUMBERS |         |        |        |       |       |       |       |       |       |       |       |       |       |
|------------|-----------|----------------|----------|---------|-----|----------------|-------|------------------------|----------------|----------|------------------|---------|--------|--------|-------|-------|-------|-------|-------|-------|-------|-------|-------|-------|
|            |           | NUMBER         | LOC      |         |     |                |       | RELAY                  | CONTACTS       | LOCATION | DWG              | 2C681   |        |        |       |       |       |       |       |       |       |       |       |       |
| 2V2670     | HV28782A1 | HV28782A2      | HS28782A | 2C681   | I   | EK             | FU-29 | 63X3K10A2<br>63X3K10C2 | M2, T2<br>E, D | 2C235A   | E-184 SH12       | 2C235A  | TBA-30 | TBA-39 | 5-13  | 5-18  | 5-16  | 5-17  | 5-18  | 5-19  | 5-20  | 5-21  | 5-22  |       |
| 2V2671     | HV28782B1 | HV28782B2      | HS28782B | 2C681   | II  | FK             | FU-30 | 63X3K10B2<br>63X3K10D2 | M2, T2<br>E, D | 2C236A   | E-184 SH12       | 2C236A  | TBA-30 | TBA-39 | 10-15 | 10-15 | 10-16 | 10-17 | 10-18 | 10-19 | 10-20 | 10-21 | 10-22 |       |
| 2V2672     | HV28792A1 | HV28792A2      | HS28792A | 2C681   | I   | EK             | FU-31 | XYX6-07552A            | R3, M3         | 2C221-A  | E-201 SH 2       | 2C221-A | A3-5   | A3-6   | 5-27  | 5-28  | 5-29  | 5-30  | 5-31  | 5-32  | 5-33  | 5-34  | 5-35  | 5-36  |
| 2V2673     | HV28792B1 | HV28792B2      | HS28792B | 2C681   | II  | FK             | FU-32 | XYX6-07552B            | R3, M3         | 2C222-B  | E-201 SH 4       | 2C222-B | B3-8   | B3-9   | 10-27 | 10-28 | 10-29 | 10-30 | 10-31 | 10-32 | 10-33 | 10-34 | 10-35 | 10-36 |

VALVE - LIMIT SWITCH DEVELOPMENT

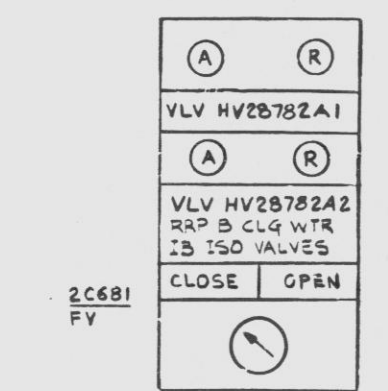
| CONTACT    | 100% OPEN | INTERMEDIATE | 100% CLOSED | CONTACT USED |
|------------|-----------|--------------|-------------|--------------|
| 25-1 A-I-B |           |              |             |              |
| 25-2 C-I-D |           |              |             |              |
| 25-3 B-I-F |           |              |             |              |
| 25-4 G-I-H |           |              |             |              |
| 25-5 A-I-B |           |              |             |              |
| 25-6 C-I-D |           |              |             |              |
| 25-7 B-I-F |           |              |             |              |
| 25-8 G-I-H |           |              |             |              |

CONTACT CLOSED

REFERENCE DWG'S.

| BECHTEL NO. | PL. NO.  |
|-------------|----------|
| E-42        | A-107191 |
| V-187       | B-106527 |
| E-201       | O-107350 |

AIR OPERATED VALVE HV28782A1, HV28782A2, HV28782B1, HV28782B2,  
LIMIT SWITCH DEVELOPMENT HV28782B3, HV28792A1, HV28792A2, HV28792B1, HV28792B2



SWITCH DEVELOPMENT

| BLOCK No. | CONTACT No. | POSITION | DRAWING No. |         |
|-----------|-------------|----------|-------------|---------|
|           |             | OPEN     | CLOSE       |         |
| TOP       | 1a, 1b      | F        | X           | SPARE   |
|           | 2a, 2b      | B        | X           | THIS SH |

SELECTOR SWITCH: HS28782A HS28782B HS28792A HS28792B  
GE TYPE CR2940 MAINTAINED CONTACTS

P.R.C. APERTURE CARD

NOTES:  
1. FOR STANDARD SYMBOLS FOR ELECTRICAL DIAGRAM SEE DWG. E-42.

UNCONTROLLED DOCUMENT FOR REFERENCE ONLY

| NO. | DATE   | REVISIONS                    | BY | CHK | APP |
|-----|--------|------------------------------|----|-----|-----|
| 1   | 5/4/82 | REV PER DCP 538 38 REV 1     |    |     |     |
| 2   | 7/1/82 | REVISED TO INCORP FCN-E-3393 |    |     |     |
| 3   | 7/1/82 | REVISED PER DCP 726 4 REV 2  |    |     |     |
| 4   | 7/1/82 | REVISED PER DCP 726 4        |    |     |     |
| 5   | 7/1/82 | ISSUED FOR CONSTRUCTION      |    |     |     |

SCALE NONE DESIGNED J. BURROR DRAWN P.A.T

**PENNSYLVANIA POWER & LIGHT COMPANY**  
ALLENTOWN, PENNSYLVANIA  
SUSQUEHANNA STEAM ELECTRIC STATION - UNIT 1, UNIT 2

BECHTEL - SAN FRANCISCO

**SCHEMATIC DIAGRAM HVAC REACTOR BLDG CHILLED WATER SYSTEM DRYWELL ISOLATION VALVES - UNIT 2**

| JOB No. | DRAWING No. | REV. |
|---------|-------------|------|
| 8856    | E-216 SH 24 | 7    |

D-107365 SH 24

24X

DANNY 9-27-82 MRG1

Docket # 50-387  
Control # 8364050245-68  
Date 3-29-83  
REGULATORY DOCKET FILE

D