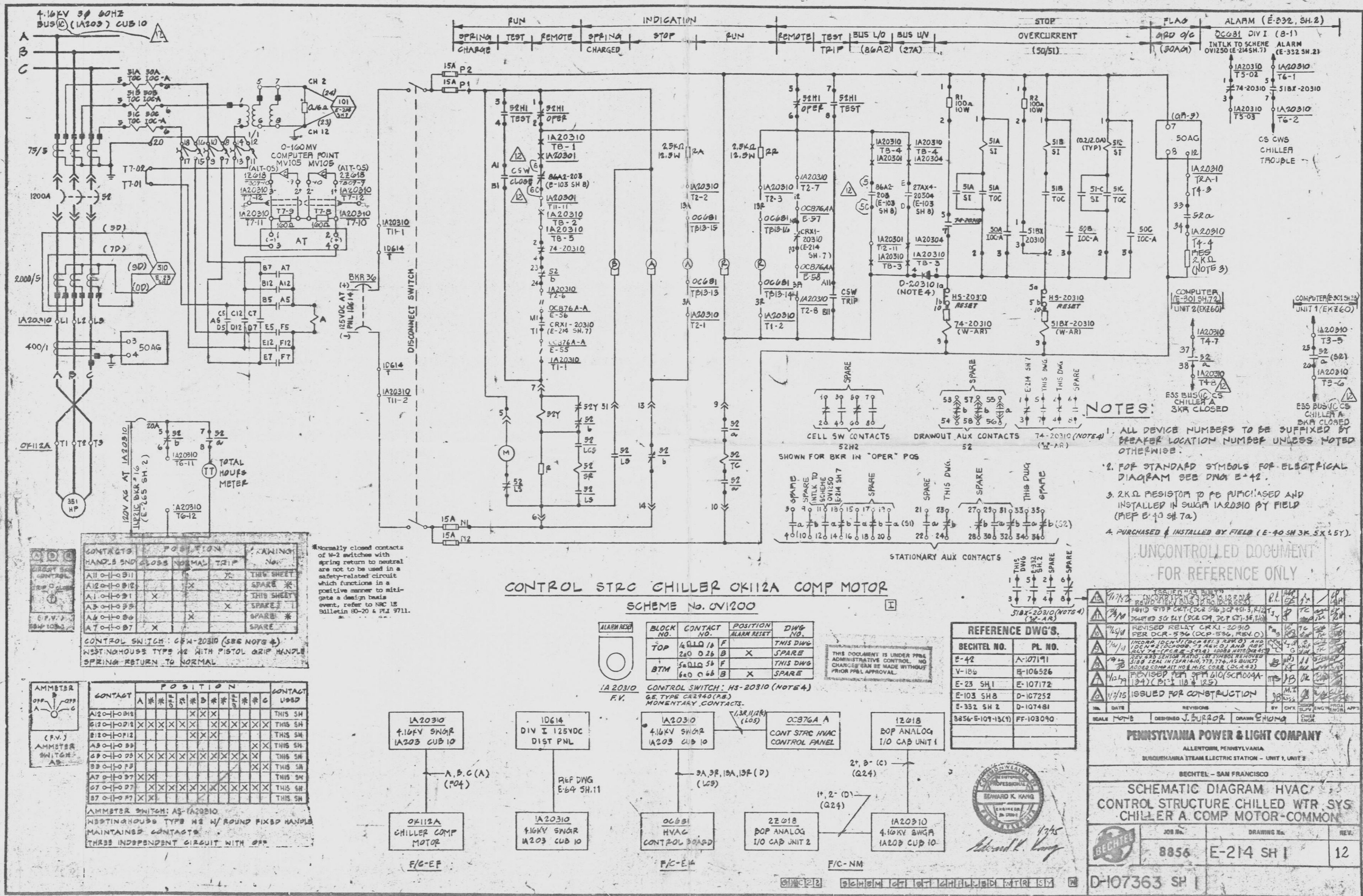


This drawing and the design it covers are the property of BECHTEL. They are hereby loaned and on the borrower's express agreement that they will not be reproduced, copied, loaned, established, nor used except in the manner and for the purpose intended by the lender to the borrower.



CONTACTS	POSITION	WARNING
A11-01-011		THIS SHEET
A12-01-012	X	SPARE *
A13-01-013	X	THIS SHEET
A14-01-014		SPARE *
A15-01-015	X	SPARE *
A16-01-016	X	SPARE *
A17-01-017	X	SPARE *

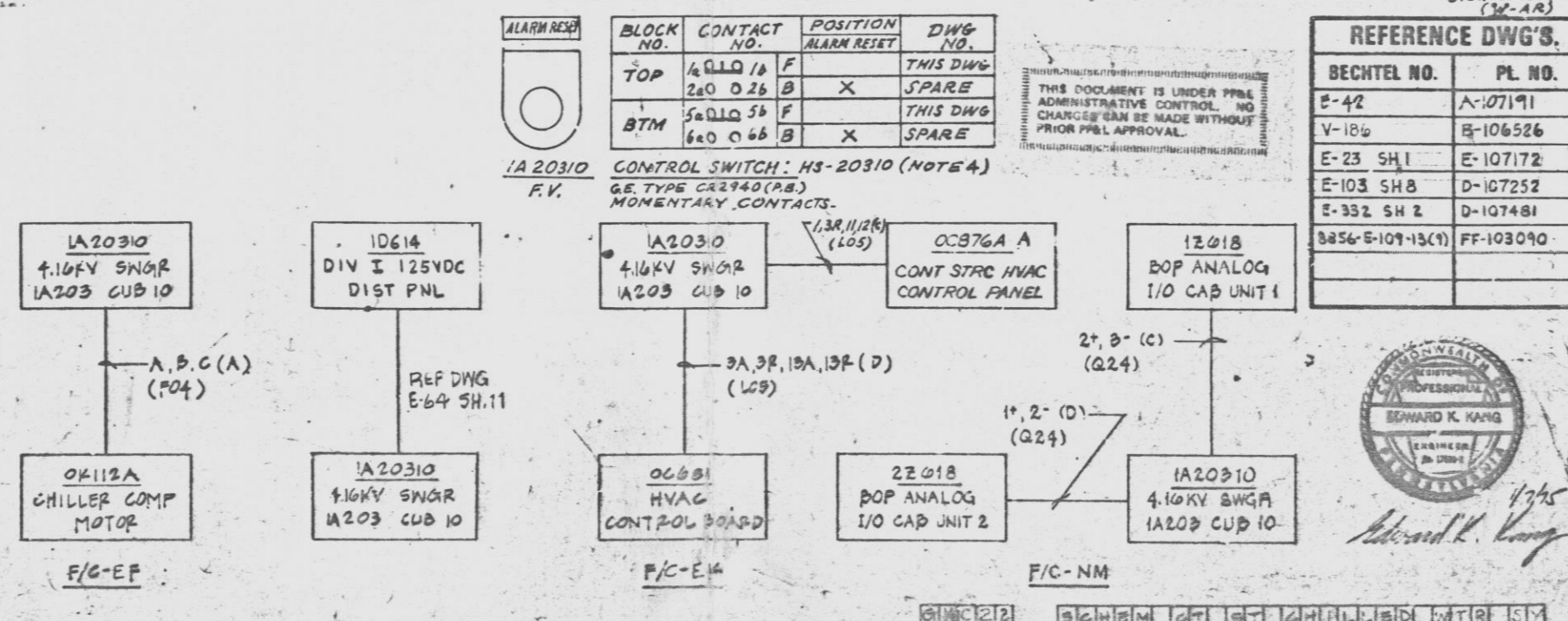
CONTROL SWITCH: CSW-20310 (SEE NOTE #4)
 NEST IN HOUSE TYPE W/ WITH PISTOL GRIP HANDLE
 SPRING RETURN TO NORMAL

CONTACT	POSITION	CONTACT
A120-01-018	X	THIS SH
A121-01-019	X	THIS SH
A122-01-020	X	THIS SH
A123-01-021	X	THIS SH
A124-01-022	X	THIS SH
A125-01-023	X	THIS SH
A126-01-024	X	THIS SH
A127-01-025	X	THIS SH
A128-01-026	X	THIS SH

AMMETER SWITCH: AS-1A20310
 NEST IN HOUSE TYPE W/ ROUND FIXED HANDLE
 MAINTAINS CONTACTS
 THREE INDEPENDENT CIRCUIT WITH OFF

*Normally closed contacts of M-2 switches with spring return to neutral are not to be used in a safety-related circuit which functions in a positive manner to mitigate a design basis event, refer to NRC LB Bulletin 80-20 & PL 9711.

CONTROL STRC CHILLER OK112A COMP MOTOR
 SCHEME No. 0V1200



- NOTES:
- ALL DEVICE NUMBERS TO BE SUFFICED BY BREAKER LOCATION NUMBER UNLESS NOTED OTHERWISE.
 - FOR STANDARD SYMBOLS FOR ELECTRICAL DIAGRAM SEE DWG E-42.
 - 2.2KΩ RESISTOR TO BE PURCHASED AND INSTALLED IN SWGR 1A20310 BY FIELD (REF E-10 SH 7A).
 - PURCHASED & INSTALLED BY FIELD (E-40 SH 3K 5X 15Y).

UNCONTROLLED DOCUMENT
 FOR REFERENCE ONLY

BLOCK NO.	CONTACT NO.	POSITION	ALARM RESET	DWG NO.
TOP	1A20310	F	X	THIS DWG
BTM	1A20310	F	X	THIS DWG

REVISION	DATE	BY	CHKD	APPD
1	11/15	J. BURDORF		
2	12/10	J. BURDORF		
3	1/10	J. BURDORF		
4	1/10	J. BURDORF		
5	1/10	J. BURDORF		
6	1/10	J. BURDORF		
7	1/10	J. BURDORF		
8	1/10	J. BURDORF		
9	1/10	J. BURDORF		
10	1/10	J. BURDORF		

BECHTEL NO. E-42 PL. NO. A-107191

BECHTEL - SAN FRANCISCO

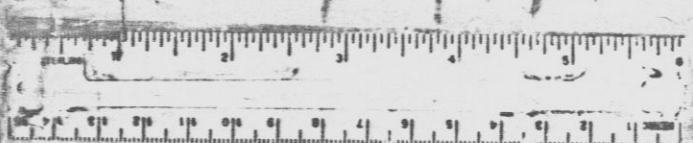
SCHEMATIC DIAGRAM HVAC CONTROL STRUCTURE CHILLED WTR. SYS CHILLER A. COMP MOTOR-COMMON

JOB NO. 8856 DRAWING NO. E-214 SH 1 REV. 12

D-107363 SH 1

24X

I certify that the microfilm image contained on this microform was made in the normal and regular course of business. This is a true, full, correct and complete reproduction and replacement for and/or in lieu of original documents generated by the Bechtel group of companies.



PRG APERTURE CARD

Docket # 50-387
 Control # 880450245-72
 Date 3-21-83 of Document
 REGULATORY DOCKET FILE