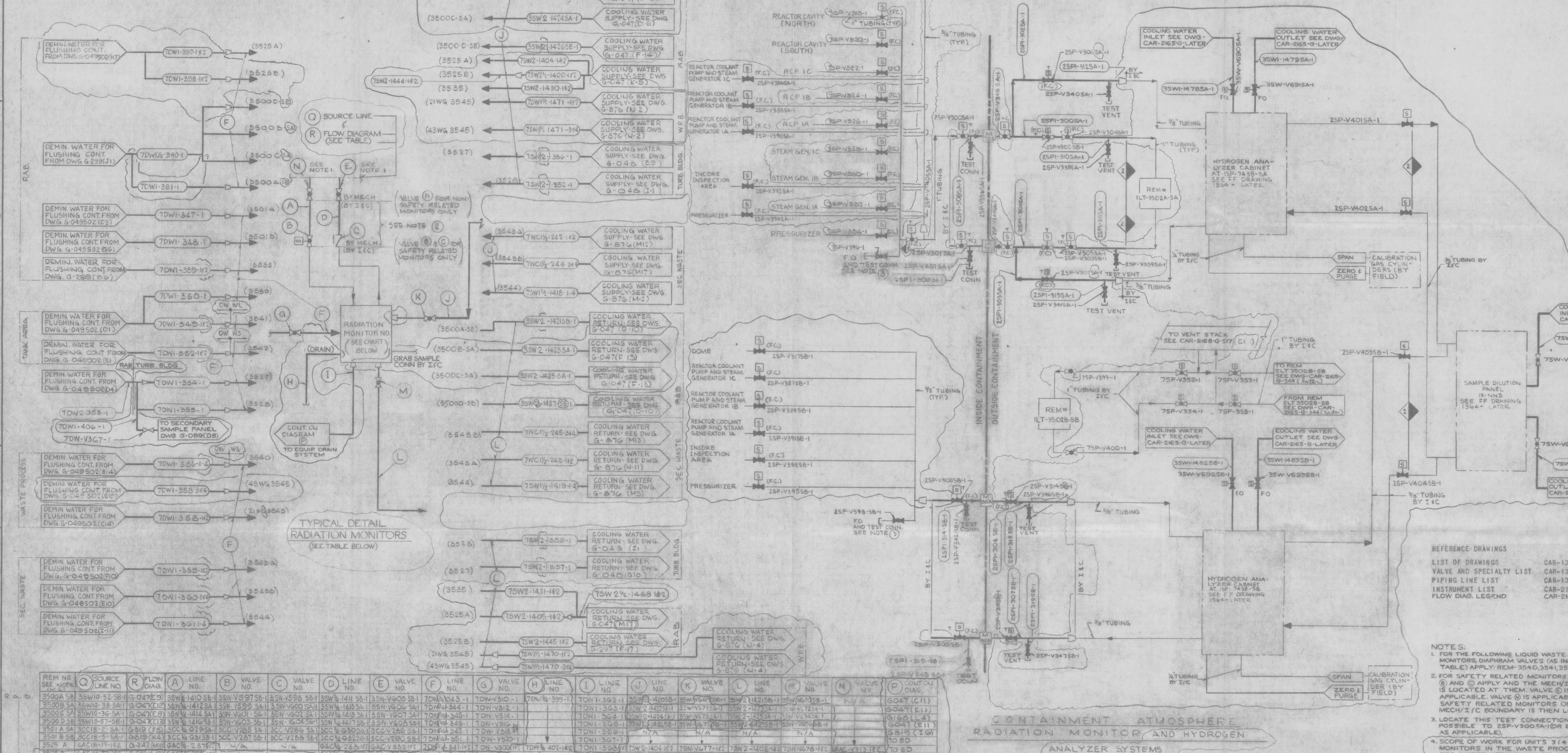


CAR-2165  
G-105



REM NO.	Q	R	A	B	C	D	E	F	G	H	I	J	K	L	M	N	P
3500A-SB	35W10-52-SB-1	G-047(F)	35N14-140-SB-1	35N-V597-SB-1	35N-V598-SB-1	35N-V141-SB-1	35N-V605-SB-1	35N-V142-SB-1	35N-V310-SB-1	35N-V309-SB-1	35N-V307-SB-1	35N-V143-SB-1	35N-V606-SB-1	35N-V144-SB-1	35N-V311-SB-1	35N-V312-SB-1	G-047(F)
3500B-SA	35W10-58-SB-1	G-047(E)	35N14-142-SA-1	35N-V597-SB-1	35N-V598-SB-1	35N-V141-SB-1	35N-V605-SB-1	35N-V142-SB-1	35N-V310-SB-1	35N-V309-SB-1	35N-V307-SB-1	35N-V143-SB-1	35N-V606-SB-1	35N-V144-SB-1	35N-V311-SB-1	35N-V312-SB-1	G-047(E)
3500C-SA	35W10-56-SA-1	G-047(E)	35N14-141-SA-1	35N-V597-SB-1	35N-V598-SB-1	35N-V141-SB-1	35N-V605-SB-1	35N-V142-SB-1	35N-V310-SB-1	35N-V309-SB-1	35N-V307-SB-1	35N-V143-SB-1	35N-V606-SB-1	35N-V144-SB-1	35N-V311-SB-1	35N-V312-SB-1	G-047(E)
3500D-SB	35W10-57-SB-1	G-047(F)	35N14-140-SB-1	35N-V597-SB-1	35N-V598-SB-1	35N-V141-SB-1	35N-V605-SB-1	35N-V142-SB-1	35N-V310-SB-1	35N-V309-SB-1	35N-V307-SB-1	35N-V143-SB-1	35N-V606-SB-1	35N-V144-SB-1	35N-V311-SB-1	35N-V312-SB-1	G-047(F)
3501A-SA	35W11-52-SA-1	G-047(F)	35N14-141-SA-1	35N-V597-SB-1	35N-V598-SB-1	35N-V141-SB-1	35N-V605-SB-1	35N-V142-SB-1	35N-V310-SB-1	35N-V309-SB-1	35N-V307-SB-1	35N-V143-SB-1	35N-V606-SB-1	35N-V144-SB-1	35N-V311-SB-1	35N-V312-SB-1	G-047(F)

TABLE  
RADIATION MONITOR HOOK-UPS  
NOTE: SEE INSTRUMENT LIST DWG. NO. CAR-2165-G-432 FOR DETAIL DESCRIPTION

- REFERENCE DRAWINGS
- LIST OF DRAWINGS: CAR-1354-B-125
  - VALVE AND SPECIALTY LIST: CAR-1354-B-069
  - PIPING LINE LIST: CAR-1354-B-070
  - INSTRUMENT LIST: CAR-2165-B-432
  - FLOW DIAG. LEGEND: CAR-2165-G-041

NOTES:

- FOR THE FOLLOWING LIQUID WASTE RADIATION MONITORS, DIAPHRAM VALVES (AS INDICATED IN TABLE) APPLY: REM-354D, 354I, 354E.
- FOR SAFETY RELATED MONITORS, VALVES (B) AND (C) APPLY AND THE MECH/IC BOUNDARY IS LOCATED AT THEM. VALVE (C) IS ALWAYS APPLICABLE. VALVE (B) IS APPLICABLE FOR NON-SAFETY RELATED MONITORS ONLY AND THE MECH/IC BOUNDARY IS THEN LOCATED AT IT.
- LOCATE THIS TEST CONNECTION AS NEAR AS POSSIBLE TO ZSP-V307-SB-1 (OR ZSP-V308-SB-1 AS APPLICABLE).
- SCOPE OF WORK FOR UNITS 3 & 4 RADIATION MONITORS IN THE WASTE PROCESS BLDG. & SEC. WASTE AREA ONLY ARE INCLUDED ON THIS DWG.
- RADIATION MONITORS ILT-3502A-SA AND ILT-3502B-SB, AND ASSOCIATED TUBING ARE SEISMIC CATEGORY I.

**NUCLEAR SAFETY**  
**RELATED IN PART ONLY**

CAR-2165  
G-105

8208050384  
**APPROVED FOR CONSTRUCTION**

INFO REQ'D TO COMPLETE THIS DWG  
-CONT OF PIPING (34, 816, 19, 716, 614, 616, 619)  
-VENDOR DWG FOR HYDROGEN ANALYZER CABINETS (CIS, 115)  
-VENDOR DWG FOR SAMPLE DILUTION PANEL (F18)  
-PORTIONS OF THIS DWG RELATED TO UNITS 3 & 4 (WASTE PROCESSING BLDG & SEC. WASTE AREA) ARE ON HOLD, DUE TO CANCELLATION OF UNITS 3 & 4 (C1, I1, G1, E1, L1, J1)

CAROLINA POWER & LIGHT COMPANY  
SHEARON HARRIS NUCLEAR POWER PLANT

**FLOW DIAGRAM  
RADIATION MONITOR AND HYDROGEN  
ANALYZER SYSTEMS  
UNIT 1**

EBASCO SERVICES INCORPORATED

NO.	DATE	REVISION	BY	CHK.	APPROVED
1	7-10-79	GENERAL REVISION	JAM		
2					

SCALE: NONE

APPROVED: [Signature]

DATE: 7-6-79

CAR-2165  
G-105

POOR ORIGINAL

5-22-82  
PRC APERTURE CARD