

PRC
APERTURE
CARD

CAROLINA POWER AND LIGHT COMPANY
SHEARON HARRIS NUCLEAR POWER PLANT
ITEM-06
STATUS: AS MANUFACTURED
CERTIFICATION LTR. NO. COL-6222
AUTHORITY: R. L. WHITNEY
ENGR. LTR. NO. EP/SA-32071

SAFETY INJECTION

1083H61 F

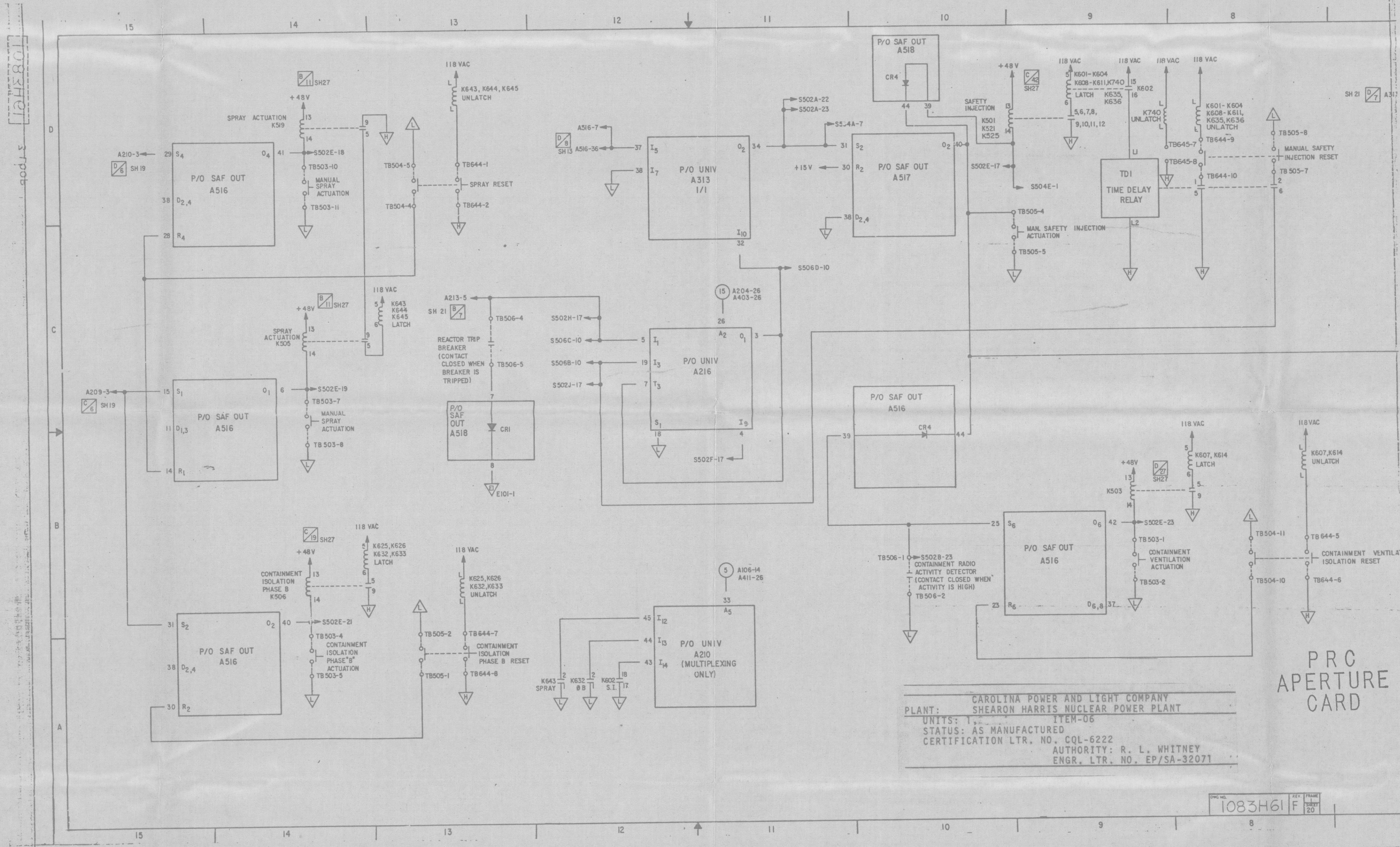
Uncontrolled Copy
FOR INFORMATION ONLY

DOCUMENT CONTROL
RECEIVED
SEP - 1 1981
RECEIVED
SHEARON HARRIS N. P. P.

1364-45841 RO
CAROLINA POWER & LIGHT COMPANY
SHEARON HARRIS NUCLEAR POWER PLANT
1800 MWs - UNITS 1, 2 - 1977, 1980
705038700 SHW 30-03
EBASCO SERVICES INCORPORATED, AGENT

Docket # 50-400
Control # 890-4200-22-251
Date of Document
REGULATORY DOCKET FILE

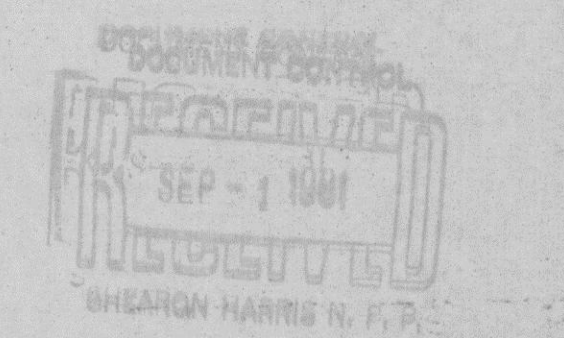
E



CAROLINA POWER AND LIGHT COMPANY
 SHEARON HARRIS NUCLEAR POWER PLANT
 UNIT 5: ITEM-D6
 STATUS: AS MANUFACTURED
 CERTIFICATION LTR. NO. CQL-6222
 AUTHORITY: R. L. WHITNEY
 ENGR. LTR. NO. EP/SA-32071

PRC
 APERTURE
 CARD

Uncontrolled Copy
 FOR INFORMATION ONLY



1364-4584-RO
 CAROLINA POWER & LIGHT COMPANY
 SHEARON HARRIS NUCLEAR POWER PLANT
 3100 WAVE UNITS 1-4-1977-1980
 E028700 SHEET 29 OF 63
 BRASCO SERVICES INCORPORATED, AGENT

Doc # 50-100
 Control # 50-100-212-250
 Date 11/8/82 of Document
 REGULATORY BUCKET FILE

E