



Carolina Power & Light Company

October 23, 1978

Mr. Harold R. Denton, Director  
Office of Nuclear Reactor Regulation  
United States Nuclear Regulatory Commission  
Washington, D. C. 20555

SHEARON HARRIS NUCLEAR POWER PLANT, UNIT NOS. 1, 2, 3, AND 4  
DOCKET NOS. 50-400, 50-401, 50-402, AND 50-403  
CORPORATE QUALITY ASSURANCE PROGRAM

Dear Mr. Denton:

Carolina Power & Light Company (CP&L) informed your staff by telephone on October 16, 1978, that CP&L intends to make minor changes in the Corporate Quality Assurance Program. Specifically, the functional responsibility for performance of quality assurance audits on our nuclear steam supplier (Westinghouse Corporation) and its vendors, our architect engineer (Ebasco Services) and its vendors, and our other outside contractors will be shifted from the Corporate Nuclear Safety and Quality Assurance Audit Section to the Engineering and Construction Quality Assurance Section. The functional responsibility for performance of quality assurance audits internally within CP&L remains with the Corporate Nuclear Safety and Quality Assurance Audit Section as described in the Shearon Harris Nuclear Power Plant (SHNPP) Preliminary Safety Analysis Report. This change will reduce a large amount of redundant surveys and audits presently conducted by both sections.

These functional responsibility changes for quality assurance auditing do not affect the CP&L quality assurance organization and continues to meet all the requirements of 10CFR50, Appendix B. Carolina Power & Light Company plans to implement these responsibility changes on October 31, 1978. These changes will be reflected by revising the Corporate Quality Assurance Manual and will be incorporated into the SHNPP Final Safety Analysis Report.

Please let us know if you have any questions.

Yours very truly,

M. A. McDuffie  
Senior Vice President  
Engineering & Construction

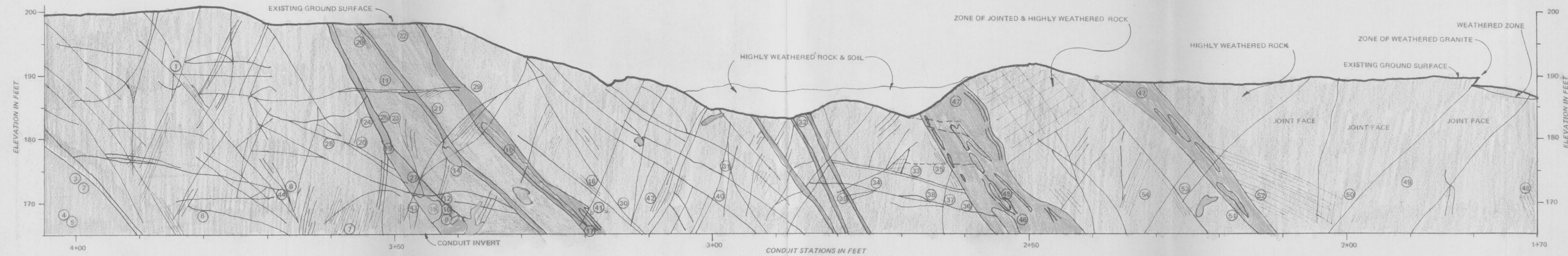
MAM/mf

7810300140  
7810300141

Boo SE  
1/0  
ma 4  
P6



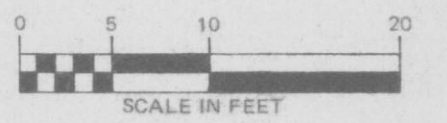




EXPLANATION

- Foliated Granite
- Mica Schist
- Hornblende-Mica Gneiss
- Felsic Volcanics (metamorphosed)
- Quartz
- Joint, Fracture, Contact

NOTE: SEE FIGURE X FOR KEY TO GEOLOGIC SECTION



THIS DOCUMENT IS DELIVERED IN ACCORDANCE WITH AND IS SUBJECT TO THE PROVISIONS OF SECTION X OF THE CONTRACT BETWEEN CAROLINA POWER & LIGHT COMPANY AND EBASCO SERVICES INCORPORATED DATED SEPTEMBER 1, 1970, AS AMENDED.

CAROLINA POWER & LIGHT SHEARON HARRIS NUCLEAR POWER PLANT		
MAIN DAM GEOLOGIC SECTION: WEST WALL OF DIVERSION CONDUIT STA. 1+70 to 4+05		
EBASCO SERVICES INCORPORATED		
SCALE 1" = 10'	APPROVED	DATE
DIV. <i>Intell.</i>		
DR. <i>M. Hayes</i>	<i>James</i>	
CH. <i>M. Hayes</i>		

FIGURE 2A

PRELIMINARY

7810300140 D