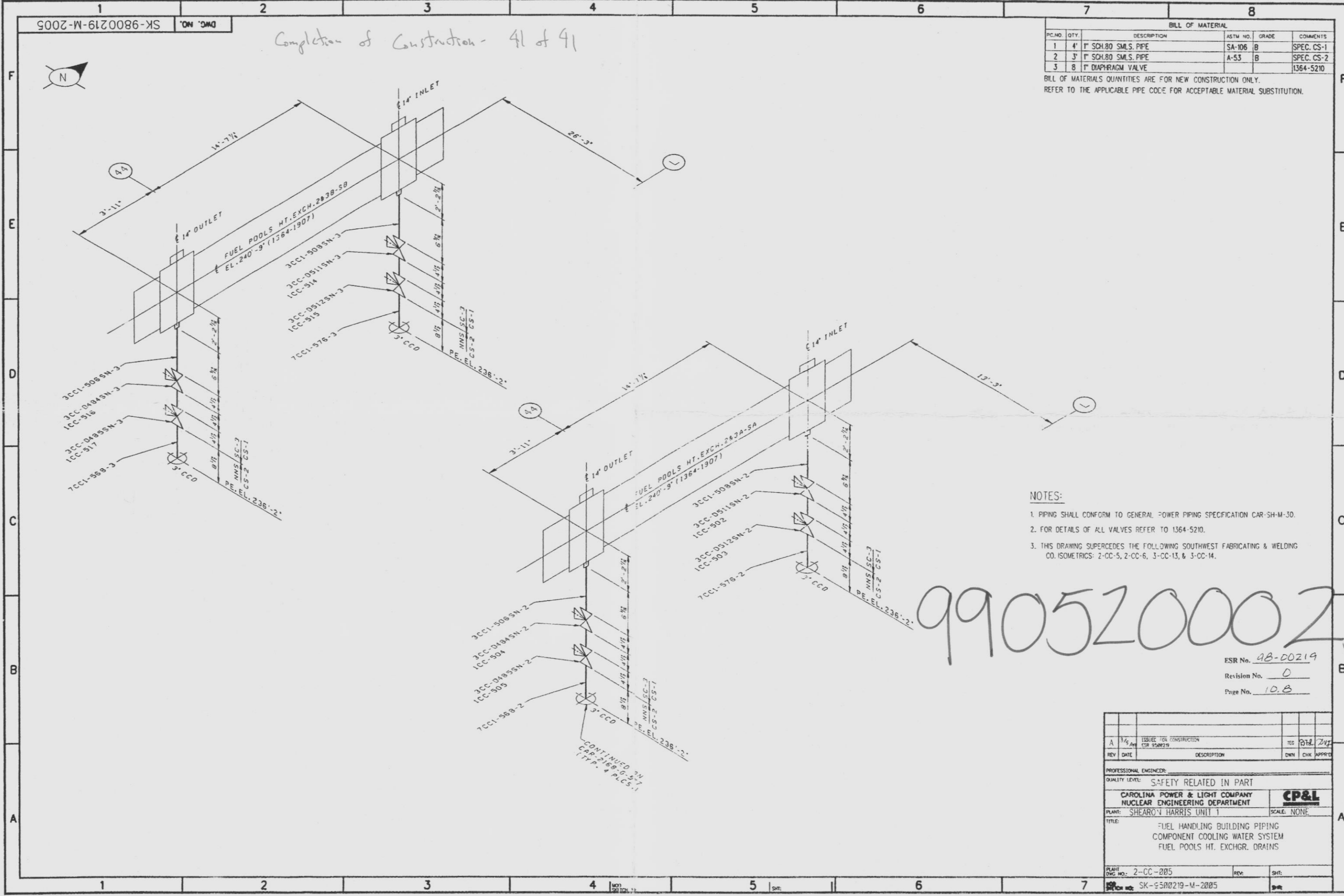


SK-9800219-M-2005

Completion of Construction - 41 of 41

PC NO.	QTY.	DESCRIPTION	ASTM NO.	GRADE	COMMENTS
1	4'	1" SCH.80 SMLS. PIPE	SA-106	B	SPEC. CS-1
2	3'	1" SCH.80 SMLS. PIPE	A-53	B	SPEC. CS-2
3	8	1" DIAPHRAGM VALVE			1364-5210

BILL OF MATERIALS QUANTITIES ARE FOR NEW CONSTRUCTION ONLY.
REFER TO THE APPLICABLE PIPE CODE FOR ACCEPTABLE MATERIAL SUBSTITUTION.



- NOTES:
1. PIPING SHALL CONFORM TO GENERAL POWER PIPING SPECIFICATION CAR-SH-M-30.
 2. FOR DETAILS OF ALL VALVES REFER TO 1364-5210.
 3. THIS DRAWING SUPERCEDES THE FOLLOWING SOUTHWEST FABRICATING & WELDING CO. ISOMETRICS: 2-CC-5, 2-CC-6, 3-CC-13, & 3-CC-14.

9905200023

ESR No. AB-00219
Revision No. 0
Page No. 10.8

REV	DATE	DESCRIPTION	CHK	APP
A	3/5/05	ISSUED FOR CONSTRUCTION	REG	OTL ZVF

PROFESSIONAL ENGINEER:
QUALITY LEVEL: SAFETY RELATED IN PART
CAROLINA POWER & LIGHT COMPANY
NUCLEAR ENGINEERING DEPARTMENT
PLANT: SHEARON HARRIS UNIT 1
SCALE: NONE
TITLE: FUEL HANDLING BUILDING PIPING
COMPONENT COOLING WATER SYSTEM
FUEL POOLS HT. EXCHGR. DRAINS
PLANT NO.: 2-CC-205
REV: SK-9500219-M-2005

APERTURE CARD

50-400
99052000-01
4/22/09
66/26/11

D

9905200023