

REGULATORY INFORMATION DISTRIBUTION SYSTEM (RIDS)

ACCESSION NBR:9302020124 DOC.DATE: 93/01/15 NOTARIZED: NO DOCKET #
 FACIL:50-400 Shearon Harris Nuclear Power Plant, Unit 1, Carolina 05000400
 AUTH.NAME AUTHOR AFFILIATION
 EBNETER,S.D. Region 2 (Post 820201)
 RECIP.NAME RECIPIENT AFFILIATION
 WATSON,R.A. Carolina Power & Light Co.

SUBJECT: Forwards final SALP rept 50-400/92-20 for 910602-920926 & discusses 930107 licensee comments re subj rept.Performance identified as very good for facility.Viewgraphs encl.

DISTRIBUTION CODE: IE40D COPIES RECEIVED:LTR 1 ENCL 1 SIZE: 26+34
 TITLE: Systematic Assessment of Licensee Performance (SALP) Report

NOTES:Application for permit renewal filed. 05000400

| | RECIPIENT | | COPIES | | | RECIPIENT | | COPIES | | |
|-----------|-----------------|-----------|--------|------|--|---------------------|-----------|--------|------|--|
| | ID | CODE/NAME | LTR | ENCL | | ID | CODE/NAME | LTR | ENCL | |
| | PD2-1 | LA | 1 | 0 | | PD2-1 | PD | 1 | 1 | |
| | LE,N | | 1 | 1 | | | | | | |
| INTERNAL: | ACRS | | 2 | 2 | | AEOD/DOA | | 1 | 1 | |
| | AEOD/DSP/TPAB | | 1 | 1 | | COMMISSION | | 5 | 5 | |
| | DEDRO | | 1 | 1 | | NRR/DLPQ/LHFB11 | | 1 | 1 | |
| | NRR/DLPQ/LHFBPT | | 1 | 1 | | NRR/DLPQ/LPEB10 | | 1 | 1 | |
| | NRR/DOEA/OEAB11 | | 1 | 1 | | NRR/DREP/PEPB9D | | 1 | 1 | |
| | NRR/DREP/PRPB11 | | 1 | 1 | | NRR/DRIS/RSGB9D | | 1 | 1 | |
| | NRR/DRIS/RSIB9A | | 1 | 1 | | NRR/PMAS/ILRB12 | | 1 | 1 | |
| | NUDOCS-ABSTRACT | | 1 | 1 | | OE DIR | | 1 | 1 | |
| | OGC/HDS1 | | 1 | 1 | | REG FILE | 02 | 1 | 1 | |
| | RGN2 FILE 01 | | 1 | 1 | | | | | | |
| EXTERNAL: | EG&G/BRYCE,J.H. | | 1 | 1 | | L ST LOBBY WARD | | 1 | 1 | |
| | NRC PDR | | 1 | 1 | | NSIC | | 1 | 1 | |

NOTE TO ALL "RIDS" RECIPIENTS:

PLEASE HELP US TO REDUCE WASTE! CONTACT THE DOCUMENT CONTROL DESK. ROOM P1-37 (EXT. 504-2065) TO ELIMINATE YOUR NAME FROM DISTRIBUTION LISTS FOR DOCUMENTS YOU DON'T NEED!

TOTAL NUMBER OF COPIES REQUIRED: LTR 31 ENCL 30

JAN 15 1993

Docket No. 50-400
License No. NPF-63

Carolina Power and Light Company
ATTN: Mr. R. A. Watson
Senior Vice President
Nuclear Generation
P. O. Box 1551
Raleigh, NC 27602

Gentlemen:

SUBJECT: SYSTEMATIC ASSESSMENT OF LICENSEE PERFORMANCE
(NRC INSPECTION REPORT NO. 50-400/92-20)

This refers to the NRC's Systematic Assessment of Licensee Performance (SALP) Report for your Harris facility which was sent to you on November 25, 1992, our meeting to discuss the report on December 11, 1992, and your written comments dated January 7, 1993, relative to the report.

The SALP Board considered your comments concerning Licensee Event Reports and concluded that a change to the initial SALP Report should be made. Enclosed is our summary of the December 11, 1992 meeting; a copy of the SALP slides; your response dated January 7, 1993; the SALP Board Disposition of your comment; and a revision of the initial SALP Report which constitutes the final SALP Report.

The performance at your Harris facility has been very good and our SALP Report indicates that your efforts have been directed toward the safe operation of the unit. We also note your continued commitment to improve overall performance.

No reply to this letter is required; however, should you have any questions concerning these matters, I will be pleased to discuss them with you.

Sincerely,

Original signed by:
Stewart D. Ebnetter

010109

Stewart D. Ebnetter
Regional Administrator

Enclosures: (See page 2)

9302020124 930115
PDR ADDCK 05000400
Q PDR

IE40

JAN 15 1993

Carolina Power and Light Company

2

Enclosures:

1. December 11, 1992
Meeting Summary
2. December 11, 1992
SALP Slides
3. CP&L Letter
Dated January 7, 1992
4. SALP Board Disposition
5. Errata Sheets
6. Final SALP Report

cc w/encls:

G. E. Vaughn
Vice President
Harris Nuclear Project
P. O. Box 165
New Hill, NC 27562

C. S. Hinnant
Plant General Manager
Harris Nuclear Plant
P. O. Box 165
New Hill, NC 27562

C. S. Olexik, Jr., Manager
Regulatory Compliance
Harris Nuclear Project
P. O. Box 165
New Hill, NC 27562

H. Ray Starling
Vice President - Legal Department
Carolina Power and Light Co.
P. O. Box 1551
Raleigh, NC 27602

Dayne H. Brown, Director
Division of Radiation Protection
N. C. Department of Environment,
Health & Natural Resources
P. O. Box 27687
Raleigh, NC 27611-7687

Ms. Gayle B. Nichols
Staff Counsel
SC Public Service Commission
P. O. Box 11649
Columbia, SC 29211

bcc w/encls: (See page 3)

Carolina Power and Light Company

3

JAN 15 1993

bcc w/encls:

H. Christensen, RII

N. Le, NRR

Document Control Desk

NRC Resident Inspector

U.S. Nuclear Regulatory Commission

Route 1, Box 315B

New Hill, NC 27562

The Chairman

K. C. Rogers, Commissioner

J. R. Curtiss, Commissioner

F. J. Remick, Commissioner

E. G. de Planque, Commissioner

J. M. Taylor, EDO

H. H. Sniezek, DEDO

L. R. Plisco, Regional Coordinator, EDO

T. E. Murley, NRR

S. Varga, NRR

E. G. Adensam, NRR

N. B. Le, NRR

F. Allenspach, SALP Coordinator, NRR

Regional Administrators, RI, RIII

RIV, and RV

K. Clark, RII, PAO

D. M. Verrelli, DRP, RII

D. J. Roberts, DRP, RII

S. J. Vias, TSS, RII

DRS and DRSS Branch Chiefs,

and Section Chiefs

RII:DRP

[Signature]
HChristensen
01/12/93

RII:DRP/

[Signature]
DVerrelli
01/13/93

RII:DRP

[Signature]
EMerschoff
01/13/93

RII:ORA

[Signature]
LReyes
01/14/93

ENCLOSURE 1

I. Meeting Summary

- A. A meeting was held at 1:00 p.m. on December 11, 1992, at the Harris Energy and Environmental Center, near New Hill, North Carolina, to discuss the SALP Board Report for the Harris facility.

B. Licensee Participants

S. H. Smith, Jr., Chairman and Chief Executive Officer
W. Cavanaugh, President and Chief Operation Officer
R. A. Watson, Senior Vice President
G. E. Vaughn, Vice President Harris Project
S. Hinnant, Plant General Manager

The list of licensee attendees above does not include the large number of Carolina Power and Light Company employees that were present at the SALP presentation. The personnel were supervisors, plant operators, maintenance personnel, and various plant staff. This large turnout was beneficial to the SALP process and is highly recommended for future presentations.

C. NRC Participants

L. A. Reyes, Deputy Regional Administrator, Region II
E. W. Merschoff, Director, Division of Reactor Projects
E. G. Adensam, Director, Project Directorate II-1, Office of Nuclear Reactor Regulation (NRR)
N. B. Le, Project Manager, NRR
H. O. Christensen, Chief, Reactor Projects, Section No. 1A
M. C. Shannon, Resident Inspector - Harris, DRP
K. M. Clark, Public Affairs Officer

**UNITED STATES
NUCLEAR REGULATORY
COMMISSION**



**SYSTEMATIC ASSESSMENT
OF
LICENSEE PERFORMANCE
(SALP)**

CAROLINA POWER AND LIGHT

SALP CYCLE 10

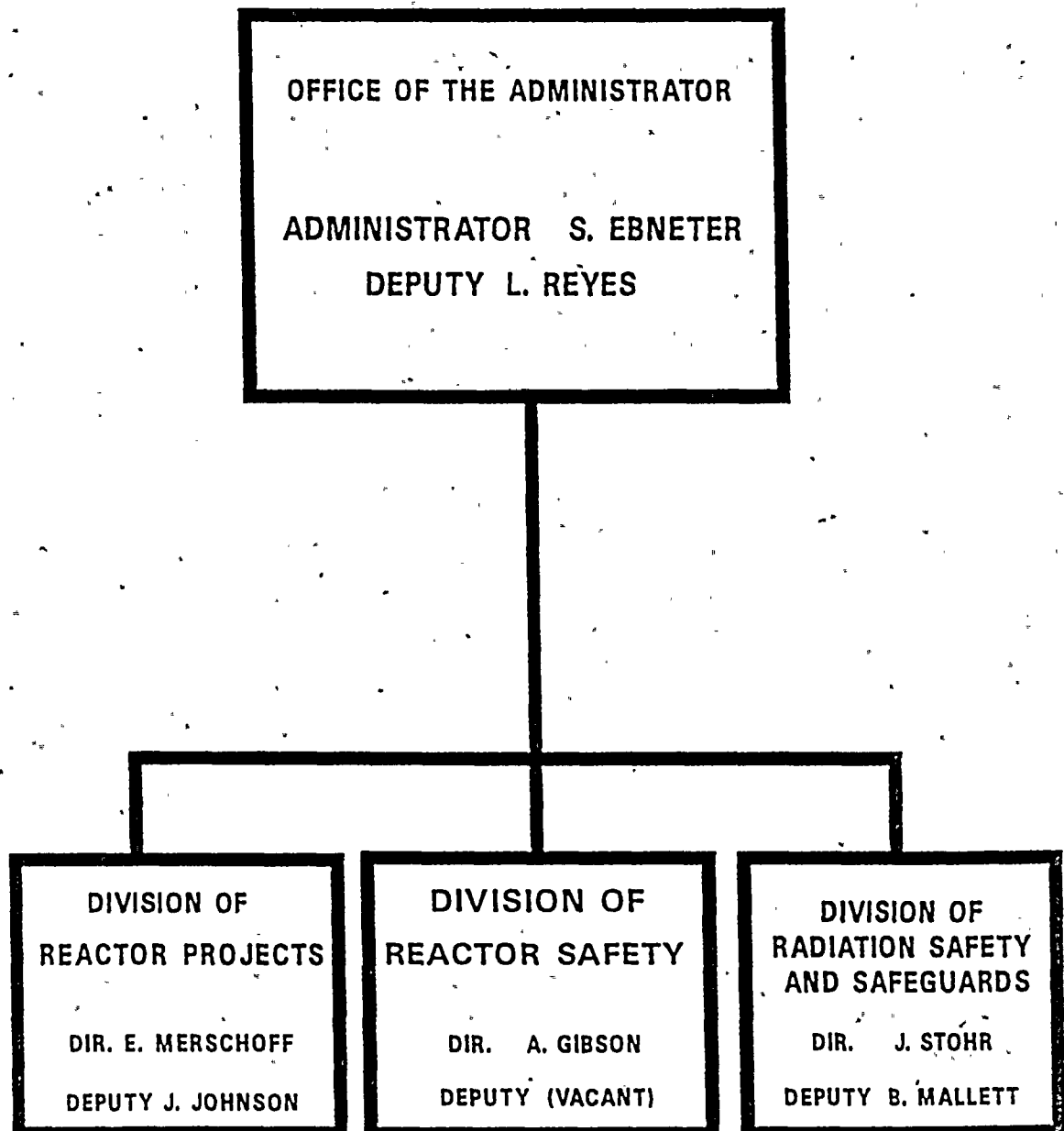
**JUNE 2, 1991
THROUGH
SEPTEMBER 26, 1992**

**SHEARON HARRIS
OCTOBER 26, 1992**

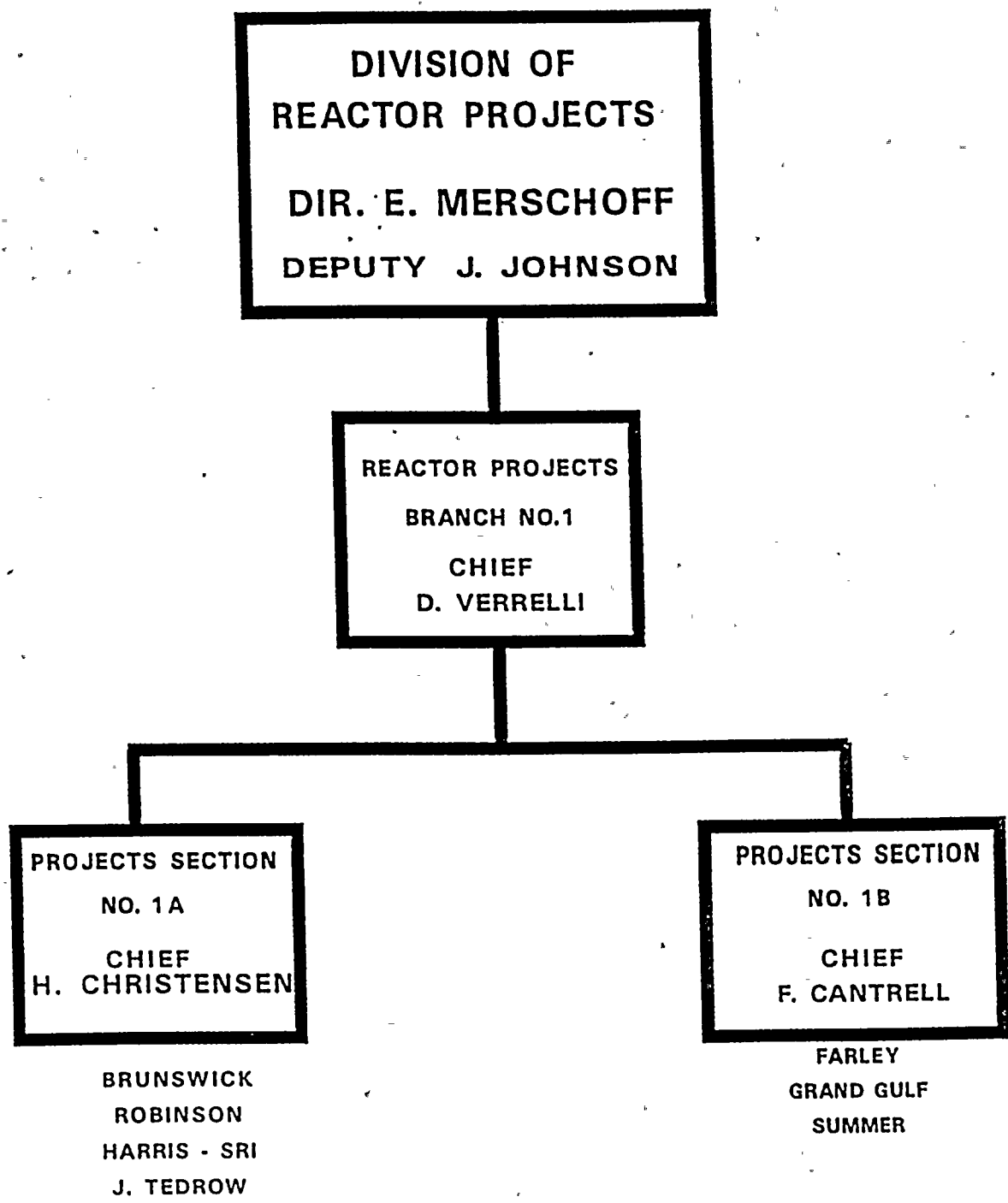
SALP PROGRAM OBJECTIVES

- 1. IDENTIFY TRENDS IN
LICENSEE PERFORMANCE**
- 2. PROVIDE A BASIS FOR
ALLOCATION OF
NRC RESOURCES**
- 3. IMPROVE NRC
REGULATORY PROGRAM**

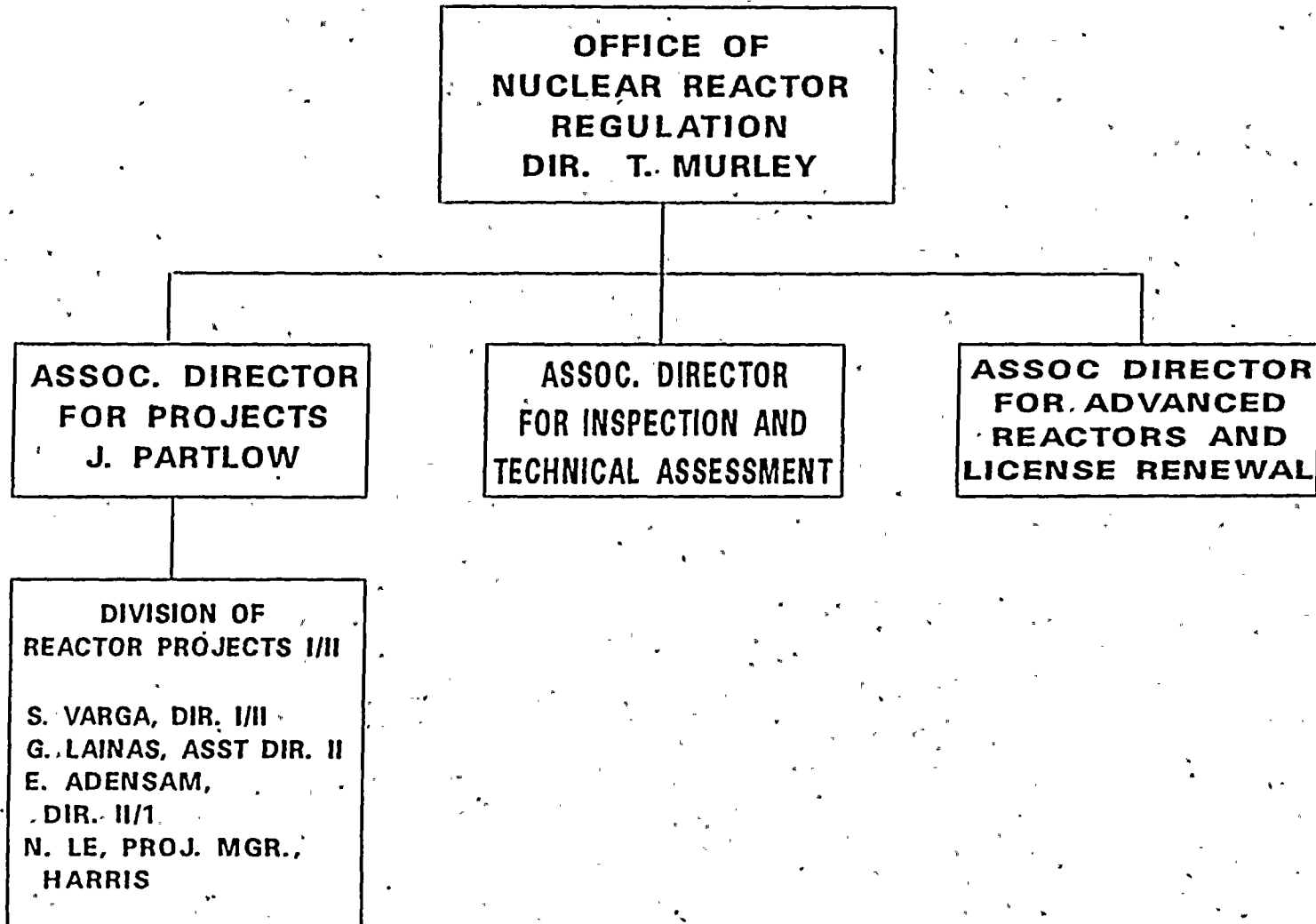
REGION II ORGANIZATION



DIVISION OF REACTOR PROJECTS ORGANIZATION



NRR ORGANIZATION



PERFORMANCE ANALYSIS AREAS
FOR OPERATING REACTORS

A. PLANT OPERATIONS

B. RADIOLOGICAL CONTROLS

C. MAINTENANCE/SURVEILLANCE

D. EMERGENCY PREPAREDNESS

E. SECURITY

F. ENGINEERING/TECHNICAL SUPPORT

**G. SAFETY ASSESSMENT/QUALITY
VERIFICATION**

AREA PERFORMANCE

CATEGORY 1

**LICENSEE MANAGEMENT ATTENTION TO
AND INVOLVEMENT IN NUCLEAR SAFETY
OR SAFEGUARDS ACTIVITIES RESULTED
IN A SUPERIOR LEVEL OF PERFORMANCE.
NRC WILL CONSIDER REDUCED LEVELS
OF INSPECTION EFFORT.**

AREA PERFORMANCE

CATEGORY 2

**LICENSEE MANAGEMENT ATTENTION TO
AND INVOLVEMENT IN NUCLEAR SAFETY
OR SAFEGUARDS ACTIVITIES RESULTED
IN A GOOD LEVEL OF PERFORMANCE.**

**NRC WILL CONSIDER MAINTAINING
NORMAL LEVELS OF INSPECTION
EFFORT.**

2

AREA PERFORMANCE

CATEGORY 3

**LICENSEE MANAGEMENT ATTENTION TO
AND INVOLVEMENT IN NUCLEAR SAFETY
OR SAFEGUARDS ACTIVITIES RESULTED
IN AN ACCEPTABLE LEVEL OF PERFORMANCE;
HOWEVER, BECAUSE OF THE NRC'S CONCERN
THAT A DECREASE IN PERFORMANCE MAY
APPROACH OR REACH AN UNACCEPTABLE
LEVEL, NRC WILL CONSIDER INCREASED
LEVELS OF INSPECTION EFFORT.**

EVALUATION CRITERIA

- 1. MANAGEMENT INVOLVEMENT AND CONTROL
IN ASSURING QUALITY**
- 2. APPROACH TO IDENTIFICATION AND
RESOLUTION OF TECHNICAL ISSUES.
FROM A SAFETY STANDPOINT**
- 3. ENFORCEMENT HISTORY**
- 4. REPORTING, ANALYSIS AND CORRECTIVE
ACTION OF REPORTABLE EVENTS**
- 5. STAFFING (INCLUDING MANAGEMENT)**
- 6. TRAINING EFFECTIVENESS AND
QUALIFICATION**

OPERATIONS

(CATEGORY 1 DECLINING)

OVERALL PERFORMANCE IN THIS AREA WAS EXCELLENT WITH A DECLINING TREND NOTED

STRENGTHS

- MANAGEMENT INVOLVEMENT
- STAFF PROFESSIONALISM
- PLANT PERFORMANCE
- COMMUNICATION
- INNOVATION
- HOUSEKEEPING

CHALLENGES

- OPERATOR PERFORMANCE
- ATTENTION TO DETAIL

MAINTENANCE/SURVEILLANCE

(CATEGORY 2 IMPROVING)

OVERALL PERFORMANCE IN THIS AREA REMAINED
GOOD WITH AN IMPROVING TREND NOTED

STRENGTHS

- MANAGEMENT INVOLVEMENT
- STAFF PROFESSIONALISM
- PLANNING
- PROGRAMS
 - PREVENTIVE MAINTENANCE
 - POST MAINTENANCE TESTING
 - SURVEILLANCE

CHALLENGES

- EQUIPMENT PERFORMANCE
- PERSONNEL ERRORS

RADIOLOGICAL CONTROL

(CATEGORY 1)

OVERALL PERFORMANCE IN THE AREA
REMAINED EXCELLENT

STRENGTHS

- DOSE MANAGEMENT
- STAFF PROFESSIONALISM
- TRAINING
- WATER CHEMISTRY PROGRAM
- ENVIRONMENTAL MONITORING PROGRAM

CHALLENGES

- SPENT FUEL POOL CONTAMINATION
- POST ACCIDENT SAMPLING SYSTEM
- EFFLUENT MONITORS

EMERGENCY PREPAREDNESS

(CATEGORY 1)

OVERALL PERFORMANCE IN THIS AREA
REMAINED EXCELLENT

STRENGTHS

- MANAGEMENT INVOLVEMENT
- STAFF PROFESSIONALISM
- PERFORMANCE

CHALLENGES

- EQUIPMENT PERFORMANCE
- ATTENTION TO DETAIL

SECURITY

(CATEGORY 1)

OVERALL PERFORMANCE IN THIS AREA
REMAINED EXCELLENT

STRENGTHS

- MANAGEMENT INVOLVEMENT
- STAFF PROFESSIONALISM
- SYSTEM CAPABILITIES

CHALLENGES

- MAINTAINING PERFORMANCE

ENGINEERING/TECHNICAL SUPPORT

(CATEGORY 1)

OVERALL PERFORMANCE IN THIS AREA
REMAINED EXCELLENT

STRENGTHS

- SUPPORT TO OPERATIONS
- OUTAGE PLANNING
- SHUTDOWN RISK MANAGEMENT
- CONTROL OF MODIFICATIONS
- MOV PROGRAM

CHALLENGES

- ATTENTION TO DETAIL

SAFETY ASSESSMENT/QUALITY VERIFICATION

(CATEGORY 2)

**OVERALL PERFORMANCE IN THIS AREA
WAS GOOD**

STRENGTHS

- **MANAGEMENT INVOLVEMENT**
- **SAFETY REVIEWS**
- **LICENSING SUBMITTALS**

CHALLENGES

- **QUALITY ASSURANCE**

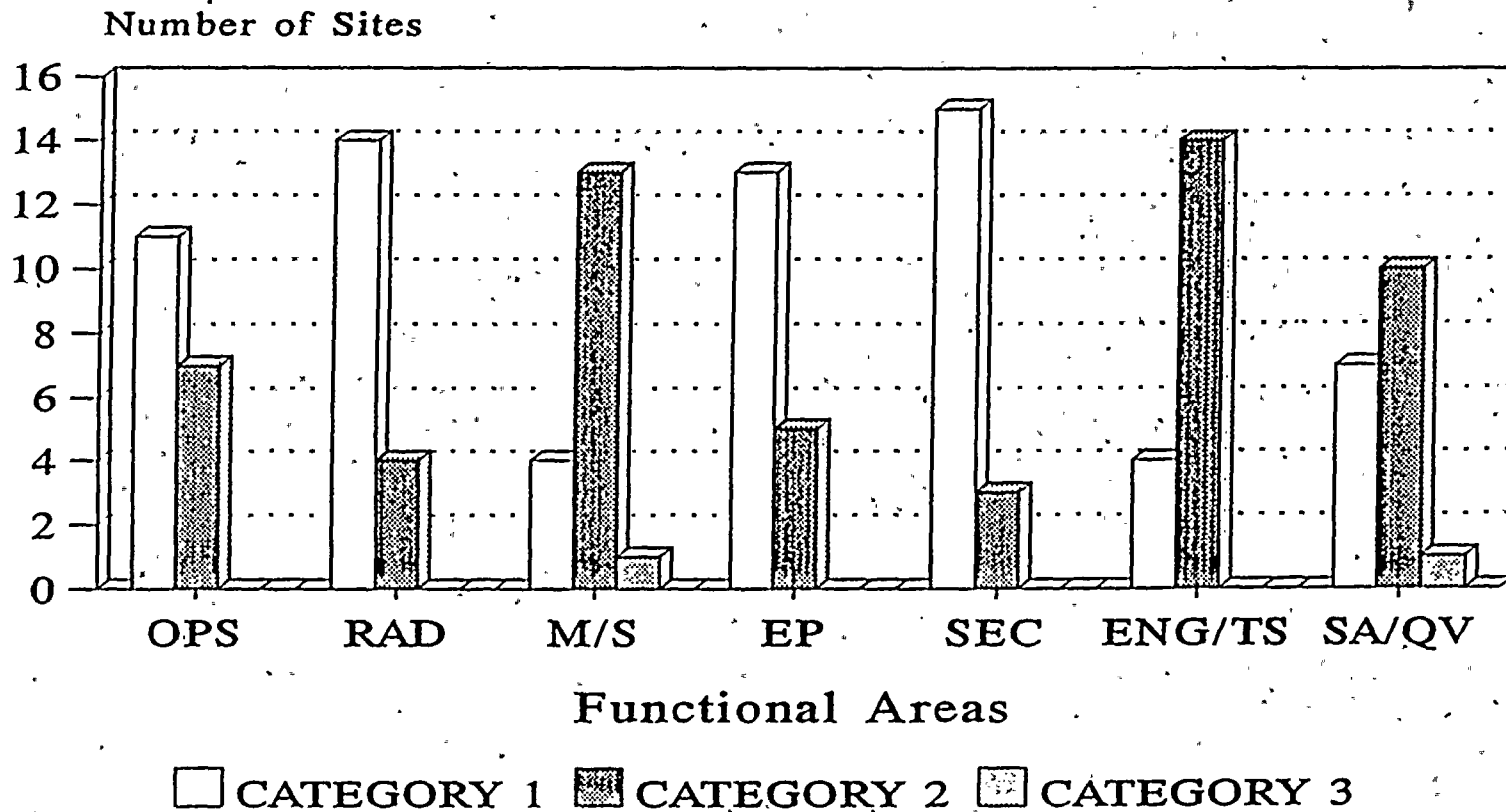
SALP RATING SUMMARY

SALP CYCLES 9 AND 10

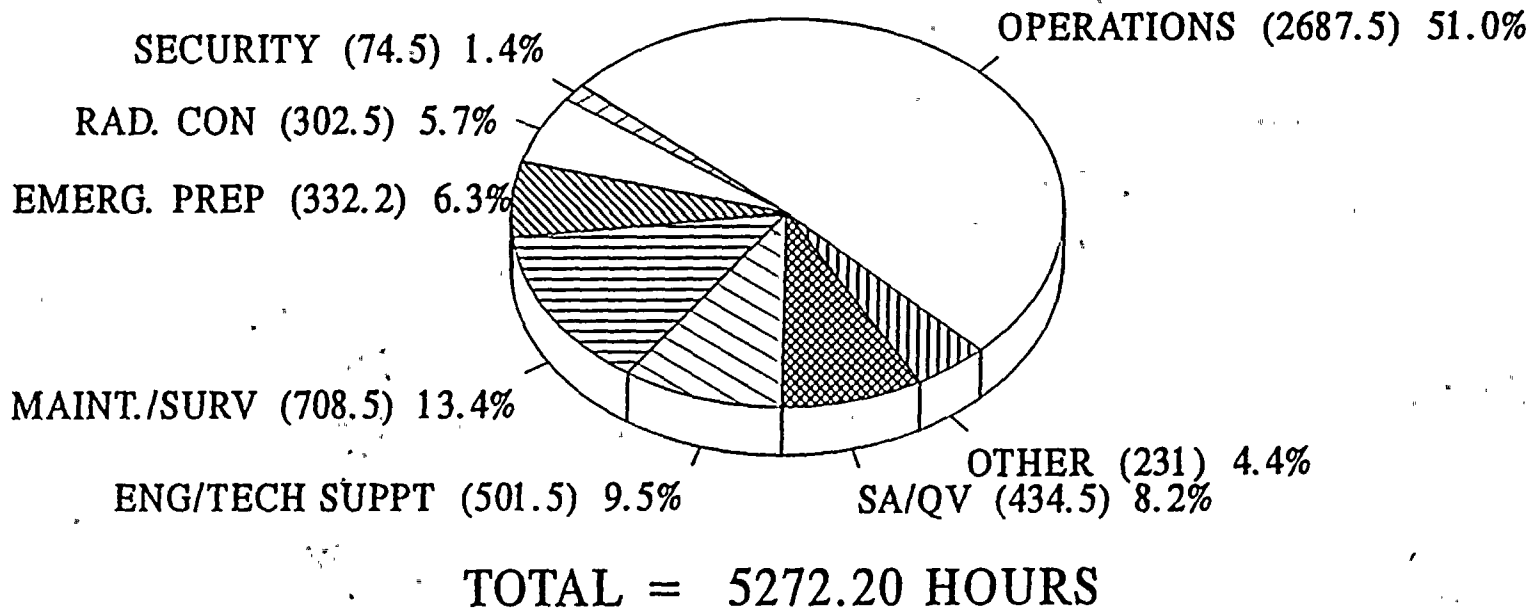
| FUNCTIONAL AREA | RATING LAST PERIOD | RATING THIS PERIOD. |
|--------------------|-----------------------|------------------------|
| OPERATIONS | 1 | 1 (DECLINING) |
| RAD CONTROL | 1 | 1 |
| MAINT/SURV | 2 | 2 (IMPROVING) |
| EMER PREP | 1 | 1 |
| SECURITY | 1 | 1 |
| ENGR/TECH | 1 | 1 |
| SA/QV | 1 | 2 |

FUNCTIONAL AREA DISTRIBUTION

For Eighteen Region II Sites
SALP CYCLES 9, 10, AND 11

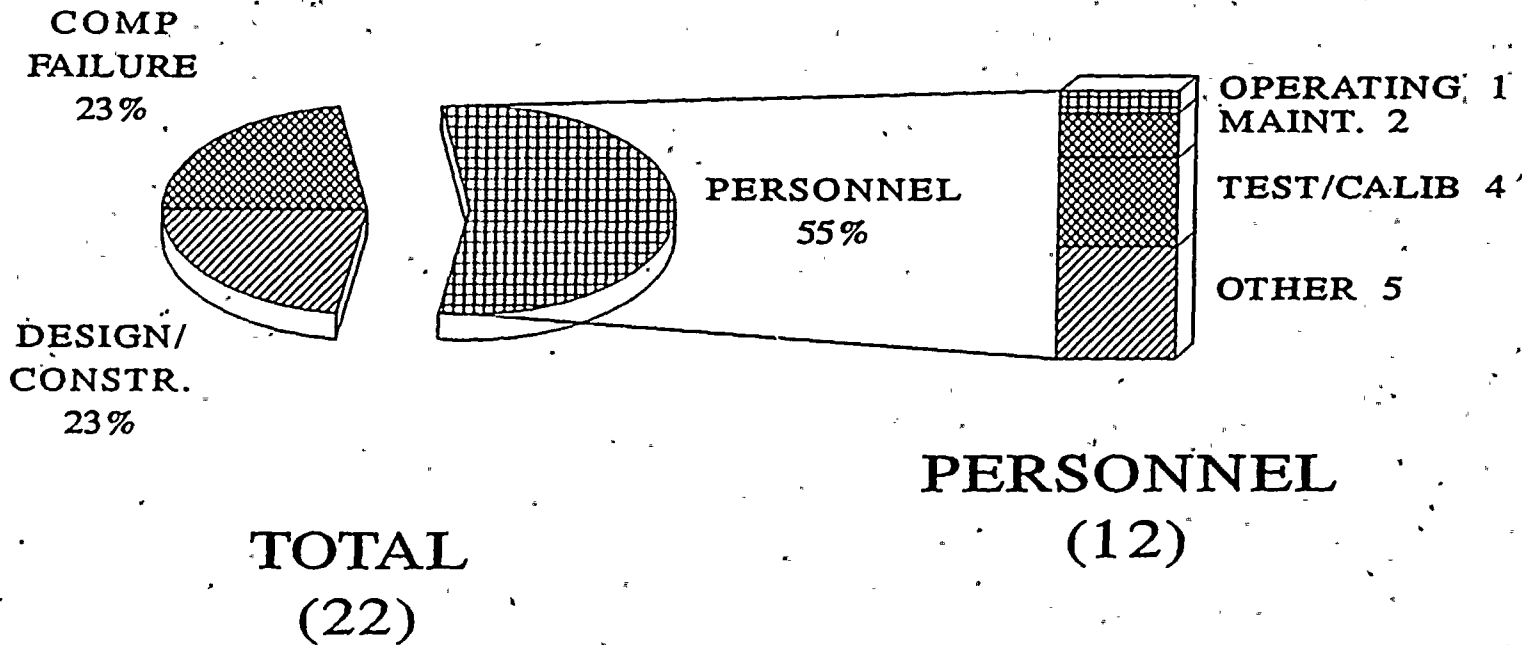


INSPECTION HOURS/FUNCTIONAL AREA SHEARON HARRIS - CYCLE 10 / 15 MONTHS



HARRIS

JUNE 2, 1991 - SEPTEMBER 26, 1992
(CYCLE 10)



LICENSEE EVENT REPORTS (LERs)