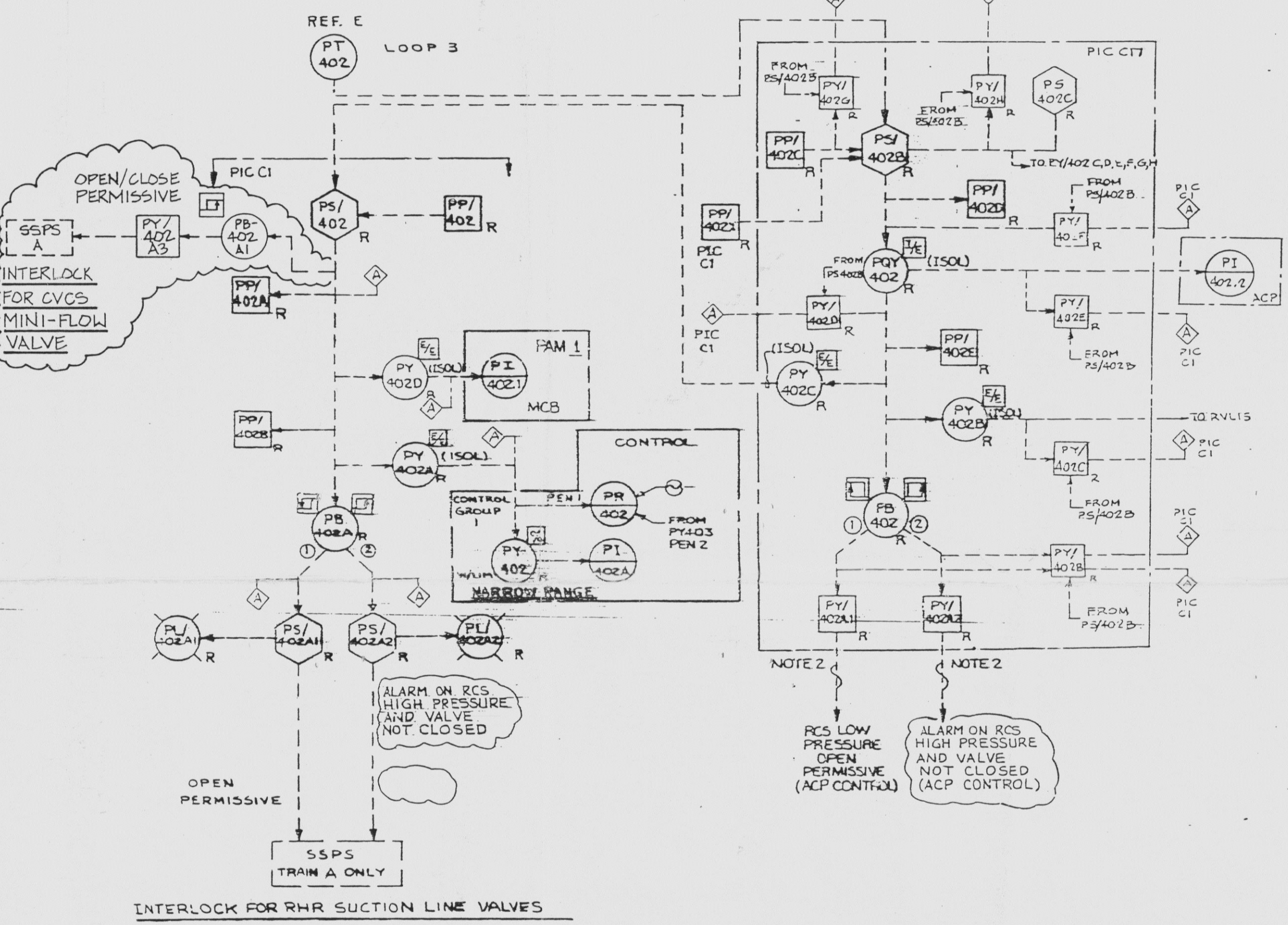
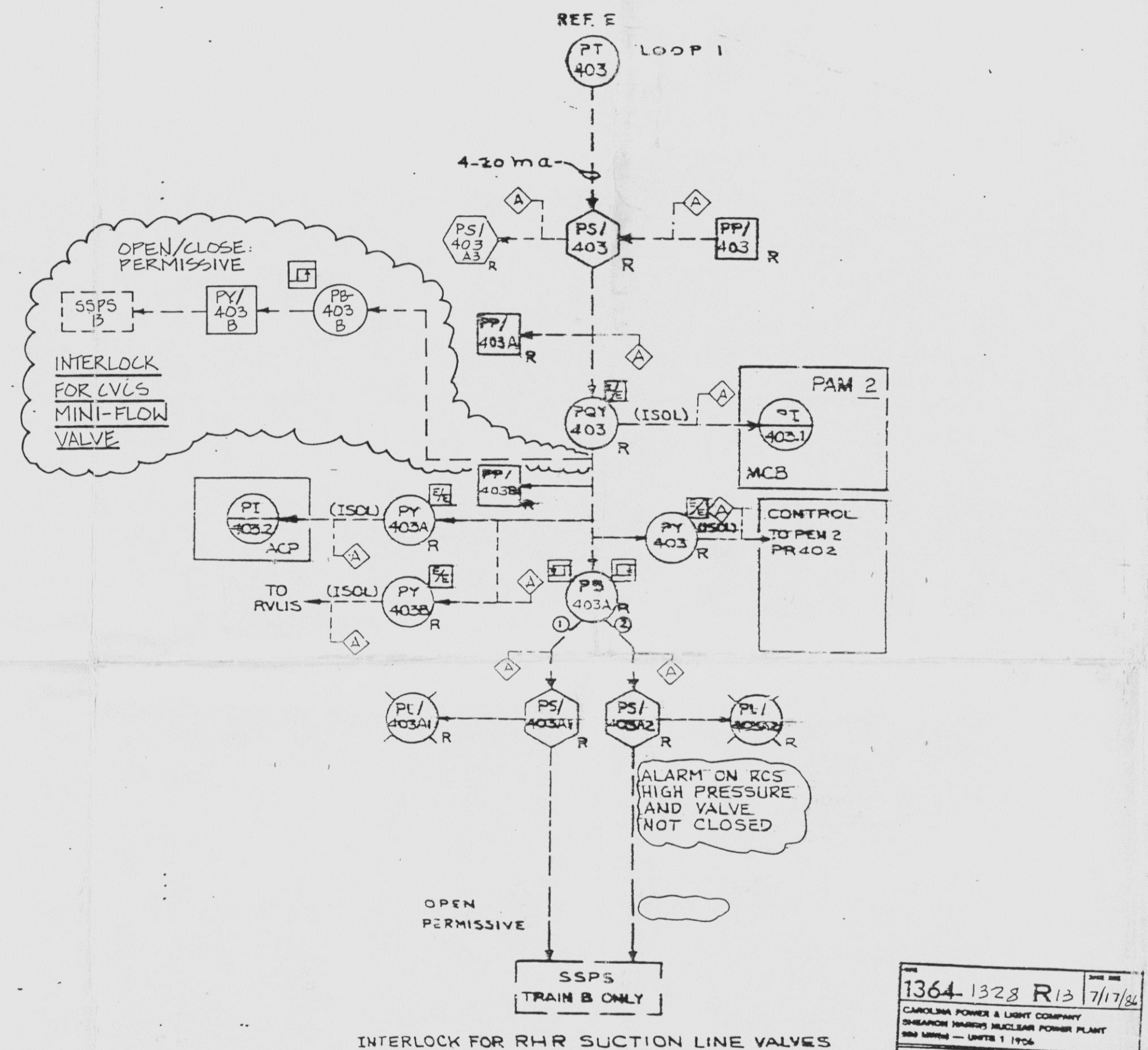


REACTOR COOLANT WIDE RANGE PRESSURE PROTECTION SET I



REACTOR COOLANT WIDE RANGE PRESSURE PROTECTION SET IV



SI APERTURE CARD

1364-1328 R13 7/17/80
 CAROLINA POWER AND LIGHT COMPANY
 SHARON HARRIS NUCLEAR POWER PLANT
 PROCESS CONTROL BLOCK DIAGRAM UNIT
 SHEET 25 OF 40
 ESASCO SERVICES INCORPORATED, AGENT

- NOTES:
 1. SEE SHEET I FOR NOTES & REFERENCES.
 2. AC SOURCE IS EXTERNAL TO PTC CABINET.

CAROLINA POWER AND LIGHT COMPANY
 PLANT: SHARON HARRIS NUCLEAR POWER PLANT
 UNIT: 1 ITEM-10
 STATUS: APPROVED FIELD MODIFICATION
 CERTIFICATION LTR. NO. COL-9374
 AUTHORITY: A. T. PARKER
 ISSUE: LTR. NO. 27/80-3147

INCORPORATES PER A. COCHERILL CP4L REV 15

1	INCORPORATES PER A. COCHERILL CP4L REV 15
2	ECN-3872
3	ECN-30310
4	DELETED PY/402A
5	PI/402B - TI/45AB1
6	PI/402B - PI/402A
7	PI/402B - PI/402A
8	PI/402B - PI/402A
9	PI/402B - PI/402A
10	PI/402B - PI/402A
11	PI/402B - PI/402A



1	INCORPORATES PER A. COCHERILL CP4L REV 15
2	ECN-3872
3	ECN-30310
4	DELETED PY/402A
5	PI/402B - TI/45AB1
6	PI/402B - PI/402A
7	PI/402B - PI/402A
8	PI/402B - PI/402A
9	PI/402B - PI/402A
10	PI/402B - PI/402A
11	PI/402B - PI/402A

9211160217

E

Docket # 50-400
 Accession # 9211160196
 Date 11/9/92 of Ltr
 Regulatory Docket File