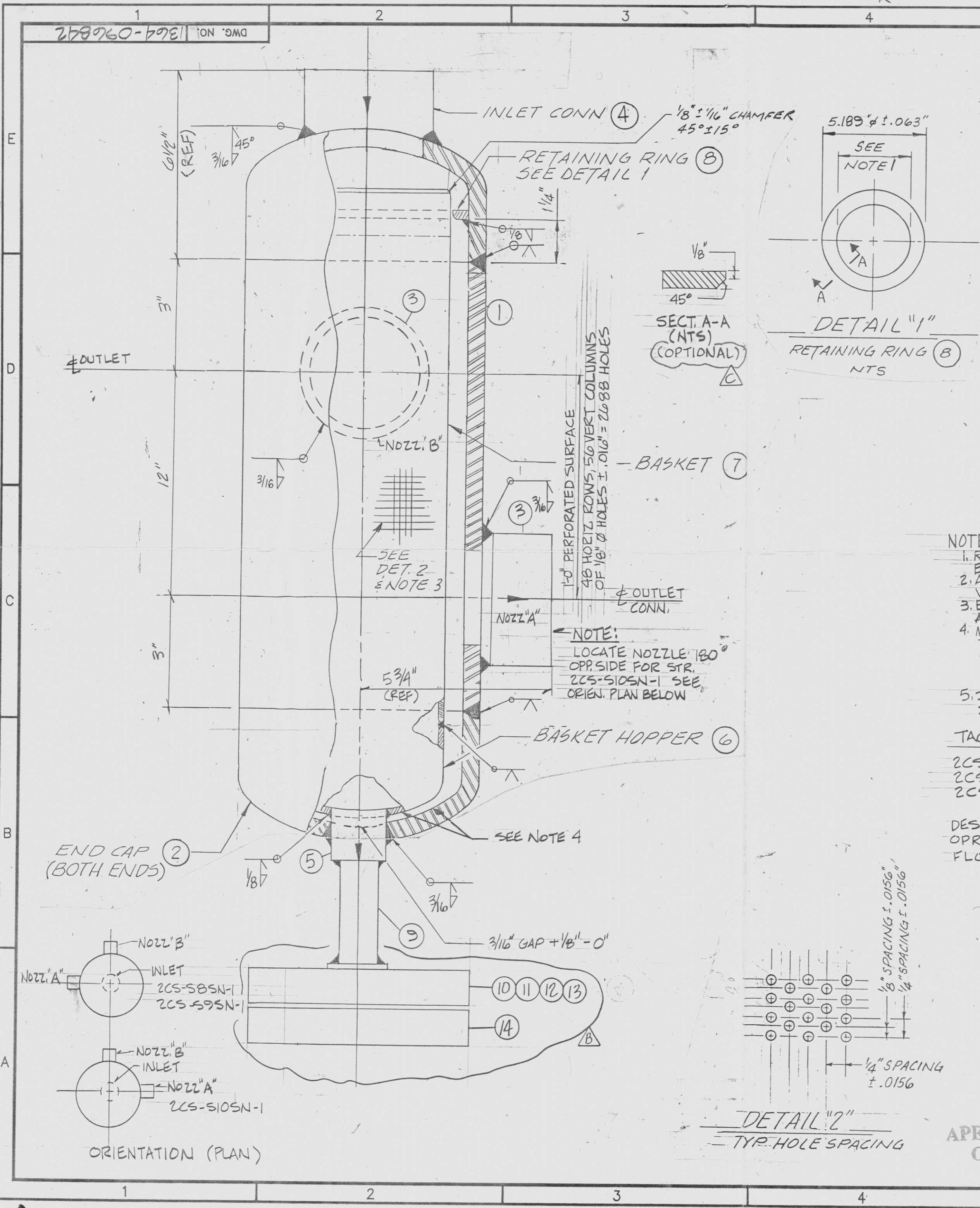


921030070



(SEE NOTE 5) BILL OF MATERIAL (QTY'S FOR (3) STRAINERS)

ITEM	QTY	DESCRIPTION
1	3	6" Ø PIPE, SCH. 160 SA-316 TP304 OR SA-312 TP304 X 18" LG.
2	6	6" BW CAP, SCH. 160, SA-403 GR. WP-304 OR SA-403 GR WP-316
3	6	2" Ø SOCKOLET, 6000#, SA-182 F304, SW OR 2" Ø PIPET, 6000#, SA-182 F304, SW
4	3	2" Ø HALF CPL'G, 6000#, SA-182 F304, SW
5	3	4" Ø HALF CPL'G, 6000#, SA-182 F304, SW
6	3	4" Ø BW CAP, SCH. 10S A403 GR-WP-304
7	3	4" Ø PIPE, SCH. 10S, A312 TP304 X 20 1/4"
8	3	1/4" THK PLATE (PER DETAIL "1") A240 TP304
9	3	1" Ø PIPE, SCH. 160, SA-316 TP304 OR SA-312 TP304 X 3" LG, PE
10	3	1" SW FLG, 1500#, SA-182 F304
11	12	7/8" Ø X 5 1/4" LG. STUD BOLTS, SA564 GR630-H1100 (7-APH)
12	24	7/8" HNYHX HD NUTS, SA194 GR6
13	3	1/8" SPIRAL WOUND FLEXITALLIC "CG" GASKET OR EQ.
14	3	1" BLIND FLG, 1500#, SA-182 F304

- NOTES:
- RETAINING RING INSIDE DIA. TO FIT SNUG ON OUTSIDE DIA. OF BASKET (ITEM #7) (+.0156, -0)
 - ALL WELDING TO BE IN ACCORDANCE WITH THE CORPORATE WELDING MANUAL.
 - ENSURE ROWS & COLUMNS OF HOLES ARE STAGGERED AND ALL SHARP EDGES & BURRS ARE REMOVED.
 - MACHINING OF THE WALL OF THE PIPE CAPS (BOM ITEM NOS. 2 & 6) FROM THE INSIDE MAY BE PERFORMED TO ALLOW INSTALLATION OF BOM ITEM NOS. 5 & 9 AS SHOWN. MINIMUM WALL THICKNESS OF THE MACHINED FITTINGS SHALL BE AS FOLLOWS: 6" SCH 160 - .629" 4" SCH 10S - .105"
 - ITEMS 1, 2, 3, 4, 5, 9, 12, 14 TO BE PURCHASED - Q-CLASS "A" ITEMS 6, 7, 8, 13 TO BE PURCHASED Q-CLASS E

TAG. NO'S
 2CS-S8SN-1
 2CS-S9SN-1
 2CS-S10SN-1

DESIGN PRESS 2800 DESIGN TEMP 200°F
 OPR PRESS 2712 OPR TEMP 130°F
 FLOW RATE 60 GPM NOMINAL

REV	DATE	DESCRIPTION	DWN	DSN	CHK	DV	DPE	DPPE
PROFESSIONAL ENGINEER:								
QUALITY LEVEL: NUCLEAR SAFETY RELATED								
CAROLINA POWER & LIGHT COMPANY NUCLEAR ENGINEERING DEPARTMENT							CP&L	
PLANT: HNP							SCALE: NONE	
TITLE: SI/CHARGING PUMPS MINI FLOW RECIRC. STRAINER								
PLANT DWG NO.: 364-096842			REV:			SHT: OF:		
MOD SKETCH NO: SK-6547-M-2002			SHT:			OF:		

Docket # 50-400
 Accession # 921030070
 Date 10/2/98 of Ltr
 Regulatory Docket File