

# ACCELERATED DISTRIBUTION DEMONSTRATION SYSTEM

## REGULATORY INFORMATION DISTRIBUTION SYSTEM (RIDS)

ACCESSION NBR: 8907180503      DOC. DATE: 89/06/30      NOTARIZED: NO      DOCKET #  
 FACIL: 50-400 Shearon Harris Nuclear Power Plant, Unit 1, Carolina      05000400  
 AUTH. NAME      AUTHOR AFFILIATION  
 HALE, M.      Carolina Power & Light Co.  
 RICHEY, R.B.      Carolina Power & Light Co.  
 RECIP. NAME      RECIPIENT AFFILIATION

SUBJECT: Monthly operating rept for June 1989 for Harris Nuclear Power Plant, Unit 1 (W/890711 ltr).

DISTRIBUTION CODE: IE24D      COPIES RECEIVED: LTR 1 ENCL 1 SIZE: 5  
 TITLE: Monthly Operating Report (per Tech Specs)

NOTES: Application for permit renewal filed. 05000400

	RECIPIENT		COPIES			RECIPIENT		COPIES	
	ID CODE/NAME	LTR	ENCL	LTR		ENCL	ID CODE/NAME	LTR	ENCL
	PD2-1 LA	3	3		PD2-1 PD	1	1		
	BECKER, D	1	1						
INTERNAL:	ACRS	10	10		AEOD/DOA	1	1		
	AEOD/DSP/TPAB	1	1		IRM TECH ADV	2	2		
	NRR/DLPQ/PEB 10	1	1		NRR/DOEA/EAB 11	1	1		
	NRR/DREP/RPB 10	1	1		NUDOCS-ABSTRACT	1	1		
	<u>REG FILE</u> 01	1	1		RGN2	1	1		
EXTERNAL:	EG&G SIMPSON, F	1	1		LPDR	1	1		
	NRC PDR	1	1		NSIC	1	1		

NOTE TO ALL "RIDS" RECIPIENTS:

PLEASE HELP US TO REDUCE WASTE! CONTACT THE DOCUMENT CONTROL DESK,  
 ROOM P1-37 (EXT. 20079) TO ELIMINATE YOUR NAME FROM DISTRIBUTION  
 LISTS FOR DOCUMENTS YOU DON'T NEED!

TOTAL NUMBER OF COPIES REQUIRED: LTR 29 ENCL 29

R  
I  
D  
S  
/  
A  
D  
D  
S  
  
R  
I  
D  
S  
/  
A  
D  
D  
S

*me gh*

1. The first part of the document is a list of names and titles, including the names of the authors and the titles of their works. This list is organized in a structured manner, likely serving as a table of contents or a list of references.

CP&L

Carolina Power & Light Company

JUL 11 1989

HARRIS NUCLEAR PROJECT  
P. O. Box 165  
New Hill, North Carolina 27562

File Number: SHF/10-15505  
Letter Number: HO-893036 (O)

Document Control Desk  
United States Nuclear Regulatory Commission  
Washington, DC 20555

HARRIS NUCLEAR PROJECT DEPARTMENT UNIT NO. 1  
DOCKET NO. 50-400  
LICENSE NO. NPF-63  
MONTHLY OPERATIONS REPORT

Dear Sirs:

In accordance with Technical Specification 6.9.1.5 for the Harris Nuclear Power Plant, Unit No. 1, Carolina Power & Light Company herewith submits the report of operation statistics and shutdown experience for the month of June 1989.

Yours very truly,

*CSHinnant for*

R. B. Richey  
Manager  
Harris Nuclear Project

MWH:dtp

Enclosure

cc: Messrs. W. H. Bradford (NRC-SHNPP)  
S. D. Ebnetter (NRC-RII)  
R. G. Oehl (DOE)

8907180503 890630  
PDR ADOCK 05000400  
R PDC

MEM/DATAREPa/1/OS4

*TEZA*  
*11*

DOCKET NO.: 050-400  
UNIT: Harris Unit 1  
DATE: June 1989  
COMPLETED BY: Mark Hale

OPERATIONS SUMMARY

Harris Unit 1 operated at a 100.00 percent Availability Factor for the month of June with a 97.22 percent capacity factor. There is one load reduction. Details are provided on the Unit Shutdowns and Power Reduction Sheet.

There are 157 fuel assemblies in the reactor vessel and 52 spent fuel assemblies in the Harris Unit 1 spent fuel pool and 0 assemblies in the new fuel pool.



CP&L CO  
 RUN DATE 07/07/89  
 RUN TIME 18:31:22

PLANT PERFORMANCE DATA SYSTEM  
 OPERATING DATA REPORT  
 HARRIS UNIT 1

PAGE 1  
 RPD36-000

DOCKET NO. 050-400  
 COMPLETED BY MARK W. HALE  
 TELEPHONE (919)362-2944

OPERATING STATUS

- |   |   |
|---|---|
| <ol style="list-style-type: none"> <li>1. UNIT NAME: HARRIS UNIT 1</li> <li>2. REPORTING PERIOD: JUNE 89</li> <li>3. LICENSED THERMAL POWER (MWT): 2775</li> <li>4. NAMEPLATE RATING (GROSS MWE): 950.9</li> <li>5. DESIGN ELECTRICAL RATING (NET MWE): 900.0</li> <li>6. MAX DEPENDABLE CAPACITY (GROSS MWE): 920.0</li> <li>7. MAX DEPENDABLE CAPACITY (NET MWE): 860.0</li> <li>8. IF CHANGES OCCUR IN CAPACITY RATINGS (ITEMS 3 THRU 7) SINCE LAST REPORT, GIVE REASONS: N/A</li> </ol> | <p>NOTES There are 157 fuel assemblies in the reactor and 52 spent assemblies in the spent fuel pool.</p> |
|---|---|

9. POWER LEVEL TO WHICH RESTRICTED IF ANY (NET MWE): None.
10. REASONS FOR RESTRICTION IF ANY: N/A

	THIS MONTH	YR TO DATE	CUMUL ATIVE
11. HOURS IN REPORTING PERIOD	720.00	4343.00	18984.00
12. NUMBER OF HOURS REACTOR CRITICAL	720.00	4261.20	15296.20
13. REACTOR RESERVE SHUTDOWN HRS	.00	.00	.00
14. HOURS GENERATOR ON LINE	720.00	4222.65	15006.88
15. UNIT RESERVE SHUTDOWN HOURS	.00	.00	.00
16. GROSS THERMAL ENERGY GEN. (MWH)	1958219.82	11291916.78	39540579.84
17. GROSS ELEC. ENERGY GEN. (MWH)	642458.00	3756965.00	13157472.00
18. NET ELEC. ENERGY GENERATED (MWH)	601964.00	3514149.00	12220465.00
19. UNIT SERVICE FACTOR	100.00	97.23	79.05
20. UNIT AVAILABILITY FACTOR	100.00	97.23	79.05
21. UNIT CAP. FACTOR (USING MDC NET)	97.22	94.09	74.85
22. UNIT CAP. FACTOR (USING DER NET)	92.90	89.91	71.52
23. UNIT FORCED OUTAGE RATE	.00	2.77	5.71
24. SHUTDOWNS SCHED. OVER NEXT 6 MONTHS (TYPE, DATE, AND DURATION OF EACH):			

Refueling Outage, October 21, 1989, 7 weeks.

25. IF SHUTDOWN AT END OF REPORT PERIOD, ESTIMATED DATE OF START UP:
26. UNITS IN TEST STATUS (PRIOR TO COMMERCIAL OPERATION): FORECAST ACHIEVED

INITIAL CRITICALITY	-----	-----
INITIAL ELECTRICITY	-----	-----
COMMERCIAL OPERATION	-----	-----



Handwritten marks and characters in the top right corner.

CP&L CO  
RUN DATE 07/07/89  
RUN TIME 18:31:20

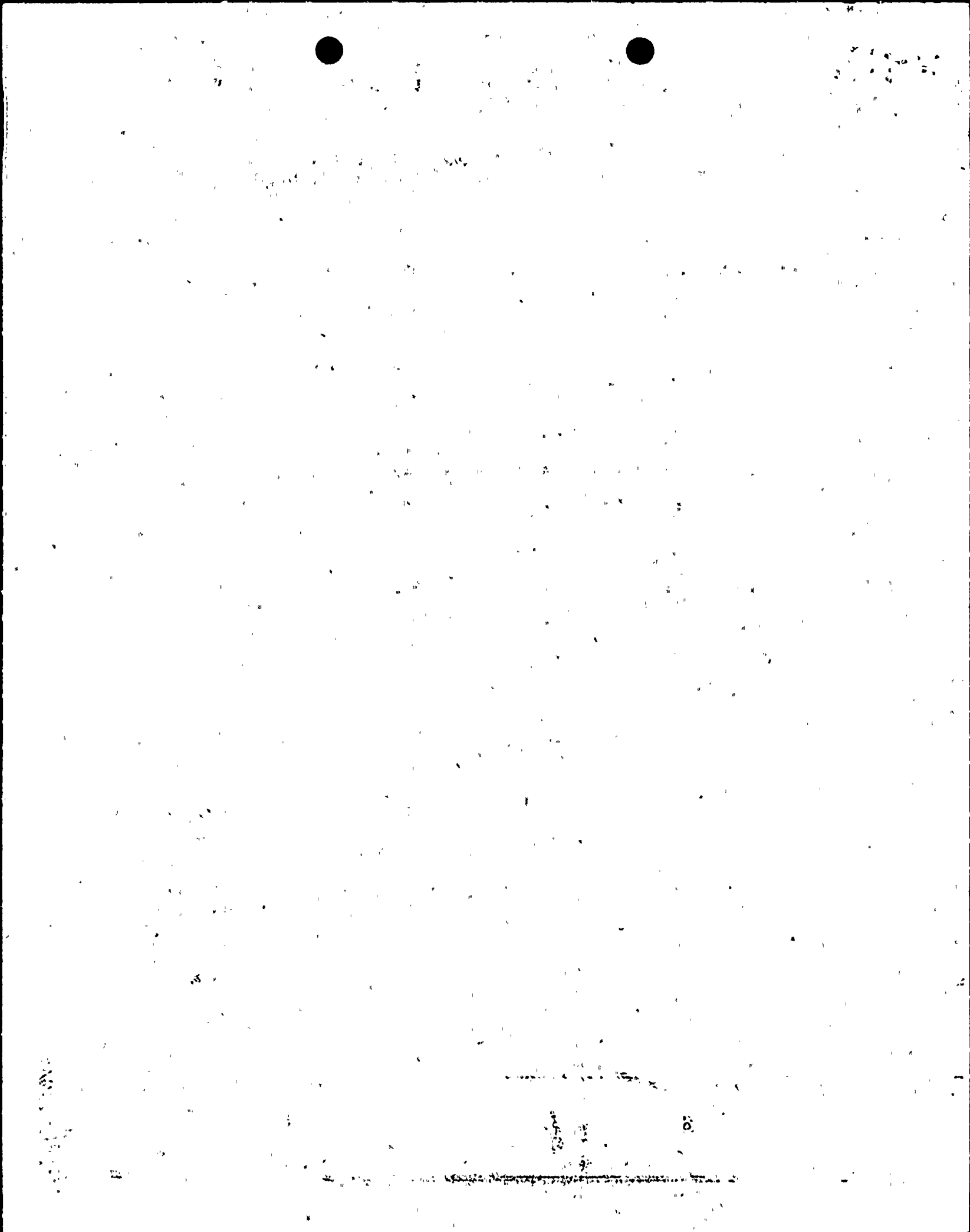
PLANT PERFORMANCE DATA SYSTEM  
APPENDIX B - AVERAGE DAILY POWER LEVEL  
HARRIS UNIT 1

PAGE 1  
RPD39-000

DOCKET NO. 050-400  
COMPLETED BY MARK W. HALE  
TELEPHONE (919)362-2944

JUNE 1989			
DAY	AVG. DAILY POWER LEVEL (MWE-NET)	DAY	AVG. DAILY POWER LEVEL (MWE-NET)
1	803	17	772
2	803	18	855
3	812	19	855
4	783	20	857
5	802	21	853
6	841	22	853
7	843	23	850
8	843	24	855
9	832	25	856
10	848	26	846
11	857	27	839
12	852	28	839
13	831	29	848
14	828	30	856
15	822		
16	846		





UNIT SHUTDOWNS AND POWER REDUCTION

DOCKET NO.: 050-400  
 UNIT NAME: Harris  
 DATE: 7/6/89  
 COMPLETED BY: M. W. Hale  
 TELEPHONE: (919) 362-2944

REPORT MONTH: JUNE 1989

No.	Date	T <sup>1</sup> y p e	Duration (Hours)	R <sup>2</sup> e a s o n	Method of Shutting Down Reactor <sup>3</sup>	Licensee Event Report #	System Code 4	Component Code 5	Cause & Corrective Action to Prevent Recurrence
R-018	890616	S	00	B	5	N/A	HH	HTEXCH	Load reduced to 85% to return DEH to automatic and to inspect the partition plate in Feedwater Heater 5B for bypass leakage. The Feedwater Heater could not be isolated for the inspection. The unit was restored to full load.

1  
 F: Forced  
 S: Scheduled

2  
 Reason:  
 A-Equipment Failure (Explain)  
 B-Maintenance or Test  
 C-Refueling  
 D-Regulatory Restriction  
 E-Operator Training & License Examination  
 F-Administrative  
 G-Operational Error (Explain)  
 H-Other (Explain)

3  
 Method:  
 1-Manual  
 2-Manual Scram  
 3-Automatic Scram  
 4-Continued  
 5-Reduced Load  
 6-Other

4  
 Exhibit G-Instructions  
 for Preparation of Data  
 Entry Sheets for Licensee  
 Event Report (LER) File  
 (NUREG-0161)

5  
 Exhibit I - Same Source