

INDEX

6.0 ADMINISTRATIVE CONTROLS

<u>SECTION</u>	<u>PAGE</u>
<u>6.1 RESPONSIBILITY</u>	6-1
<u>6.2 ORGANIZATION</u>	6-1
6.2.1 OFFSITE.....	6-1
6.2.2 UNIT STAFF.....	6-1
FIGURE 6.2-1 OFFSITE ORGANIZATION. (DELETED)	6-3
FIGURE 6.2-2 UNIT ORGANIZATION. (DELETED)	6-4
TABLE 6.2-1 MINIMUM SHIFT CREW COMPOSITION.....	6-5
6.2.3 ONSITE NUCLEAR SAFETY (ONS) UNIT	
Function.....	6-6
Composition.....	6-6
Responsibilities.....	6-6
Records.....	6-6
6.2.4 SHIFT TECHNICAL ADVISOR.....	6-6
<u>6.3 UNIT STAFF QUALIFICATIONS</u>	6-6
<u>6.4 TRAINING</u>	6-7
<u>6.5 REVIEW AND AUDIT</u>	6-7
6.5.1 SAFETY AND TECHNICAL REVIEWS	
General Program Control.....	6-7
Technical Evaluations.....	6-7
Qualified Safety Reviewers.....	6-7
Safety Evaluations and Approvals.....	6-8
6.5.2 PLANT NUCLEAR SAFETY COMMITTEE (PNSC)	
Function.....	6-9
Composition.....	6-9
Meeting Frequency.....	6-9
Quorum.....	6-9
Responsibilities.....	6-9
Records.....	6-11

8706180020 870612
PDR ADOCK 05000400
P PDR

6.0 ADMINISTRATIVE CONTROLS

6.1 RESPONSIBILITY

6.1.1 The Plant General Manager shall be responsible for overall unit operation and shall delegate in writing the succession to this responsibility during his absence.

6.1.2 The Shift Foreman (or, during his absence from the control room, a designated individual) shall be responsible for the control room command function. A management directive to this effect, signed by the Vice President-Harris Nuclear Project shall be reissued to all station personnel on an annual basis.

6.2 ORGANIZATION

OFFSITE

(Deleted).
~~6.2.1 The offsite organization for unit management and technical support shall be as shown in Figure 6.2-1.~~

UNIT STAFF

6.2.2 The unit organization shall be *subject to the following* ~~as shown in Figure 6.2-2 and~~.

- a. Each on-duty shift shall be composed of at least the minimum shift crew composition shown in Table 6.2-1;
- b. At least one licensed Operator shall be in the control room when fuel is in the reactor. In addition, while the unit is in MODE 1, 2, 3, or 4, at least one licensed Senior Operator shall be in the control room;
- c. An individual qualified as a Radiation Control Technician* shall be on site when fuel is in the reactor;
- d. All CORE ALTERATIONS shall be observed and directly supervised by either a licensed Senior Operator or licensed Senior Operator Limited to Fuel Handling who has no other concurrent responsibilities during this operation;
- e. *(Deleted).*

*The Radiation Control Technician composition may be less than the minimum requirements for a period of time not to exceed 2 hours, in order to accommodate unexpected absence, provided immediate action is taken to fill the required positions.



CORPORATE ORGANIZATION

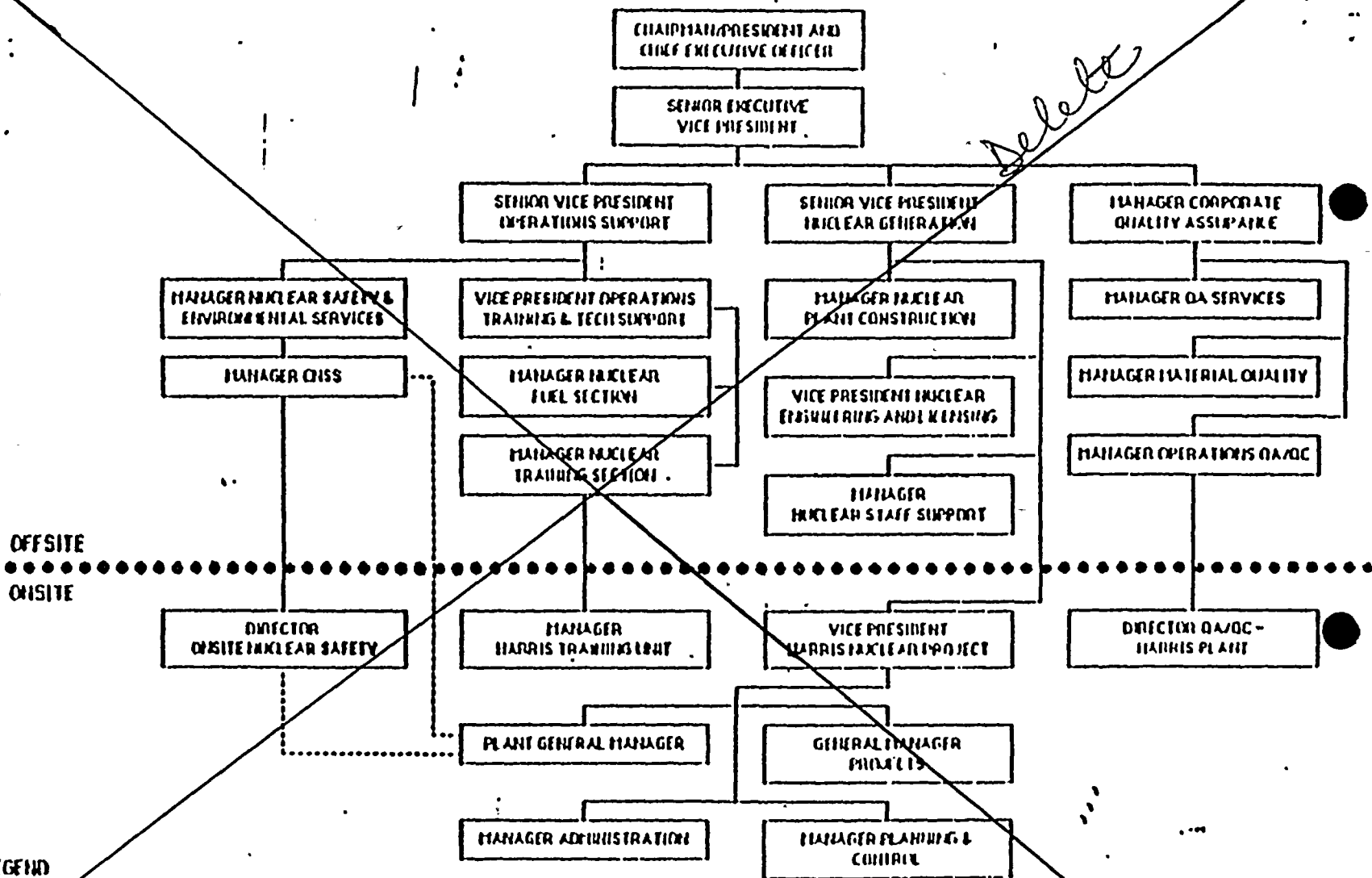


FIGURE 6.2-1
OFFSITE ORGANIZATION

PLANT ORGANIZATION

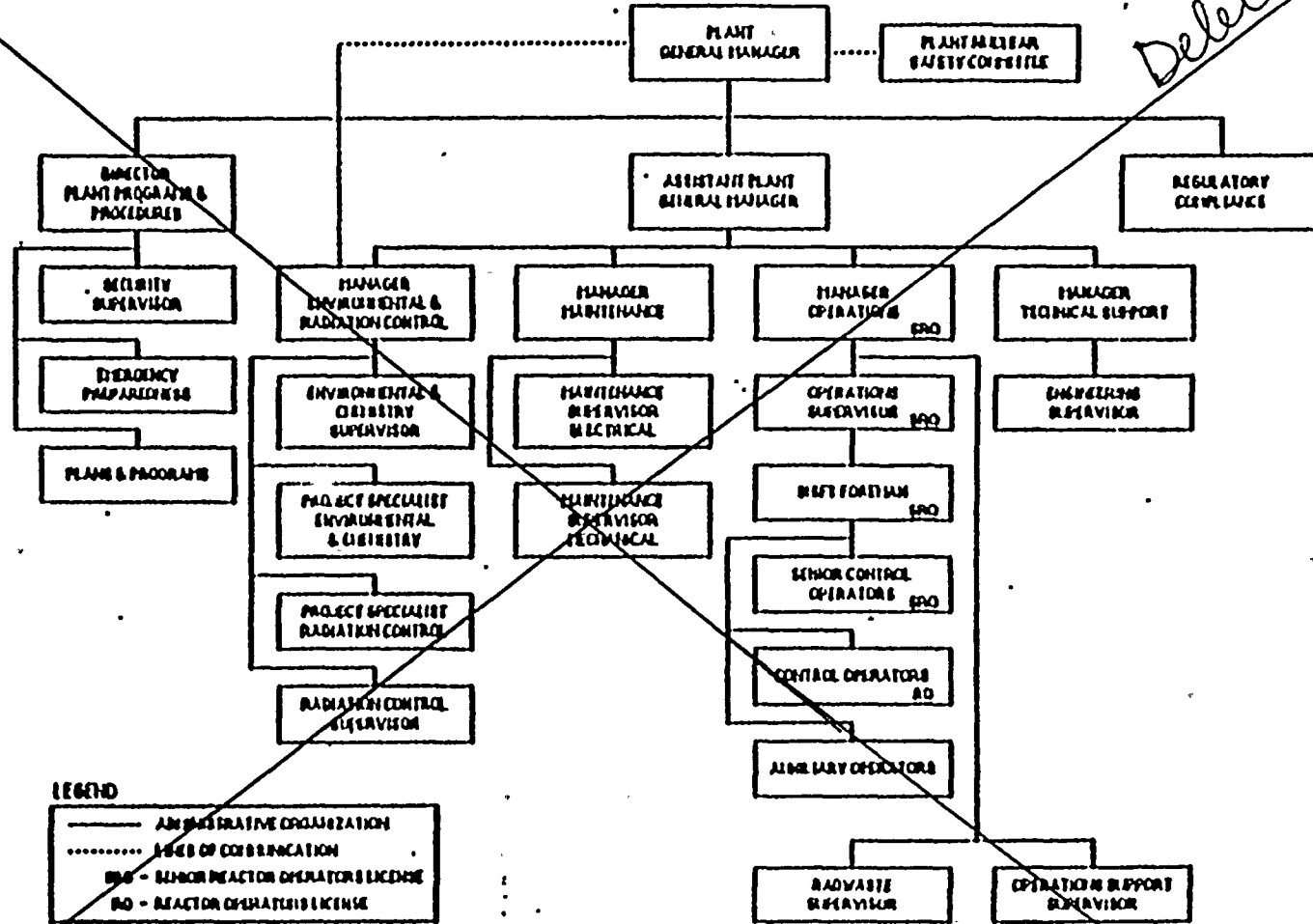


FIGURE 6.2-2
UNIT ORGANIZATION