

ATTACHMENT 3

PROPOSED TECHNICAL SPECIFICATIONS

Marked-up Technical Specification Pages:

viii

3/4 4-30
3/4 4-34
B 3/4 4-8
B 3/4 4-9
B 3/4 4-15



4

1

2

3

4

5

6

7

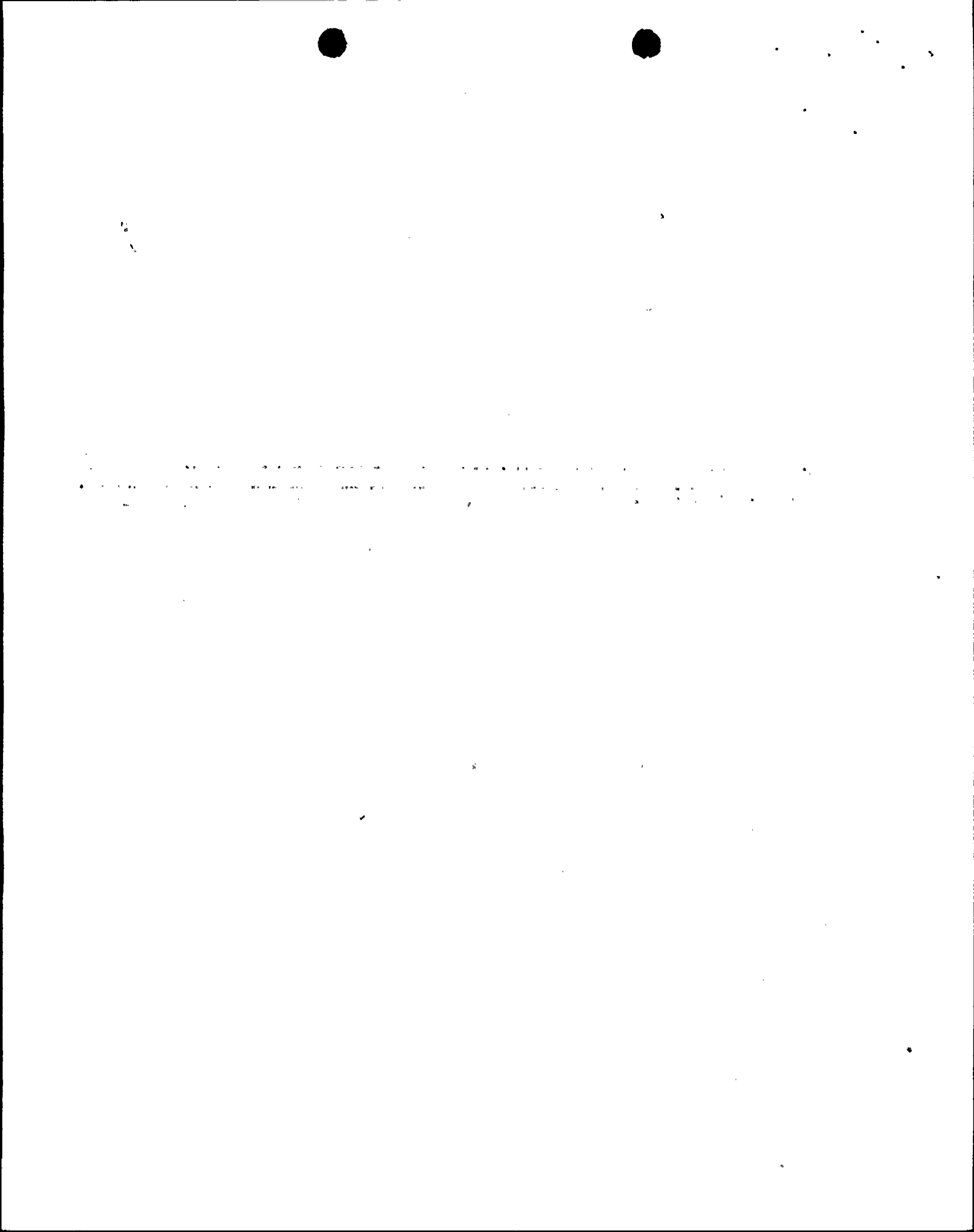
8

9

INDEX

LIMITING CONDITIONS FOR OPERATION AND SURVEILLANCE REQUIREMENTS

| <u>SECTION</u> | <u>PAGE</u> |
|--|-----------------------------------|
| 3/4.4.9 PRESSURE/TEMPERATURE LIMITS | |
| Reactor Coolant System..... | 3/4 4-30 |
| FIGURE 3.4-2 TURKEY POINT UNITS 3&4 REACTOR COOLANT SYSTEM HEATUP LIMITATIONS (60°F/hr) | |
| APPLICABLE UP TO 20 EFPY..... | 3/4 4-31 |
| FIGURE 3.4-3 TURKEY POINT UNITS 3&4 REACTOR COOLANT SYSTEM HEATUP LIMITATIONS (100°F/hr) | |
| APPLICABLE UP TO 20 EFPY..... | 3/4 4-32 |
| FIGURE 3.4-4 TURKEY POINT UNITS 3&4 REACTOR COOLANT SYSTEM COOLDOWN LIMITATION (100°F/hr) | |
| APPLICABLE UP TO 20 EFPY..... | 3/4 4-33 |
| TABLE 4.4-5 REACTOR VESSEL MATERIAL SURVEILLANCE PROGRAM WITHDRAWAL SCHEDULE..... | 3/4 4-34 <i>delete</i> |
| Pressurizer..... | 3/4 4-35 |
| Overpressure Mitigating Systems..... | 3/4 4-36 |
| 3/4.4.10 STRUCTURAL INTEGRITY..... | 3/4 4-38 |
| 3/4.4.11 REACTOR COOLANT SYSTEM VENTS..... | 3/4 4-39 |
| | |
| <u>3/4.5 EMERGENCY CORE COOLING SYSTEMS</u> | |
| 3/4.5.1 ACCUMULATORS..... | 3/4 5-1 |
| 3/4.5.2 ECCS SUBSYSTEMS - T_{avg} GREATER THAN OR EQUAL TO 350°F.... | 3/4 5-3 |
| FIGURE 3.5-1 RHR PUMP CURVE..... | 3/4 5-6 |
| 3/4.5.3 ECCS SUBSYSTEMS - T_{avg} LESS THAN 350°F..... | 3/4 5-9 |
| 3/4.5.4 REFUELING WATER STORAGE TANK..... | 3/4 5-10 |



REACTOR COOLANT SYSTEM

3/4.4.9 PRESSURE/TEMPERATURE LIMITS

REACTOR COOLANT SYSTEM

LIMITING CONDITION FOR OPERATION

3.4.9.1 The Reactor Coolant System (except the pressurizer) temperature and pressure shall be limited in accordance with the limit lines shown on Figures 3.4-2 and 3.4-3 and 3.4-4 during heatup, cooldown, criticality, and inservice leak and hydrostatic testing with:

- a. A maximum heatup of 100°F in any 1-hour period,
- b. A maximum cooldown of 100°F in any 1-hour period, and
- c. A maximum temperature change of less than or equal to 5°F in any 1-hour period during inservice hydrostatic and leak testing operations above the heatup and cooldown limit curves.

APPLICABILITY: At all times.

ACTION:

With any of the above limits exceeded, restore the temperature and/or pressure to within the limit within 30 minutes; perform an engineering evaluation to determine the effects of the out-of-limit condition on the structural integrity of the Reactor Coolant System; determine that the Reactor Coolant System remains acceptable for continued operation or be in at least HOT STANDBY within the next 6 hours and reduce the RCS T_{avg} and pressure to less than 200°F and 500 psig, respectively, within the following 30 hours.

SURVEILLANCE REQUIREMENTS

4.4.9.1.1 The Reactor Coolant System temperature and pressure shall be determined to be within the limits at least once per 30 minutes during system heatup, cooldown, and inservice leak and hydrostatic testing operations.

4.4.9.1.2 The reactor vessel material irradiation surveillance specimens shall be removed and examined, to determine changes in material properties, as required by 10 CFR Part 50, Appendix H, ~~in accordance with the schedule in Table 4.4-5.~~ The results of these examinations shall be used to update Figures 3.4-2, 3.4-3 and 3.4-4.



Small, faint handwritten marks or characters in the upper right corner.

[Faint, illegible handwritten text]

[Faint, illegible handwritten text]

TABLE 4.4-5

REACTOR VESSEL MATERIAL SURVEILLANCE PROGRAM - WITHDRAWAL SCHEDULE

UNIT 3

| <u>CAPSULE NUMBER</u> | <u>VESSEL LOCATION</u> | <u>LEAD FACTOR</u> | <u>WITHDRAWAL TIME</u> |
|-----------------------|------------------------|--------------------|--------------------------------|
| U | 30° | 0.49 | Standby |
| V | -- | --- | Specimen withdrawn at 12 years |
| W | 40° | 0.34 | Standby |
| X | 270° | 2.48 | 33 years |
| Y | 150° | 0.49 | Standby |
| Z | 230° | 0.34 | Standby |

UNIT 4

| <u>CAPSULE NUMBER</u> | <u>VESSEL LOCATION</u> | <u>LEAD FACTOR</u> | <u>WITHDRAWAL TIME</u> |
|-----------------------|------------------------|--------------------|------------------------|
| U | 30° | 0.49 | Standby |
| V | 290° | 0.79 | 24 years |
| W | 40° | 0.34 | Standby |
| X | 270° | 2.48 | Standby |
| Y | 150° | 0.49 | Standby |
| Z | 230° | 0.34 | Standby |

delete

(Table Deleted)



REACTOR COOLANT SYSTEM

BASES

PRESSURE/TEMPERATURE LIMITS (Continued)

1. The reactor coolant temperature and pressure and system heatup and cooldown rates (with the exception of the pressurizer) shall be limited in accordance with Figures 3.4-2 to 3.4-4 for the service period specified thereon:
 - a. Allowable combinations of pressure and temperature for specific temperature change rates are below and to the right of the limit lines shown. Limit lines for cooldown rates between those presented may be obtained by interpolation; and
 - b. Figures 3.4-2 to 3.4-4 define limits to assure prevention of non-ductile failure only. For normal operation, other inherent plant characteristics, e.g., pump heat addition and pressurizer heater capacity, may limit the heatup and cooldown rates that can be achieved over certain pressure-temperature ranges.
2. These limit lines shall be calculated periodically using methods provided below,
3. The secondary side of the steam generator must not be pressurized above 200 psig if the temperature of the steam generator is below 70°F,
4. The pressurizer heatup and cooldown rates shall not exceed 100°F/h and 200°F/h, respectively. The spray shall not be used if the temperature difference between the pressurizer and the spray fluid is greater than 320°F, and
5. System preservice hydrotests and inservice leak and hydrotests shall be performed at pressures in accordance with the requirements of ASME Boiler and Pressure Vessel Code, Section XI.

The fracture toughness properties of the ferritic materials in the reactor vessel are determined in accordance with the NRC Standard Review Plan, ASTM E185-79, and in accordance with additional reactor vessel requirements.

The properties are then evaluated in accordance with Appendix G of the 1983 Edition of Section III of the ASME Boiler and Pressure Vessel Code and the additional requirements of 10 CFR 50, Appendix G and the calculation methods described in Westinghouse Report GTSD-A-1.12, "Procedure for Developing Heatup and Cooldown Curves."

Heatup and cooldown limit curves are calculated using the most limiting value of the nil-ductility reference temperature, RT_{NDT} , at the end of 20 effective full power years (EFPY) of service life. The 20 EFPY service life period is chosen such that the limiting RT_{NDT} at the 1/4T location in

the version of the ASTM E185 standard required by 10 CFR 50 Appendix H

1000

1000

required by the ASTM E182 standard
is Appendix B of the ASTM E182 standard

REACTOR COOLANT SYSTEM

BASES

PRESSURE/TEMPERATURE LIMITS (Continued)

the core region is greater than the RT_{NDT} of the limiting unirradiated material. The selection of such a limiting RT_{NDT} assures that all components in the Reactor Coolant System will be operated conservatively in accordance with applicable Code requirements.

The heatup and cooldown limit curves, Figures 3.4-2, 3.4-3 and 3.4-4 are composite curves prepared by determining the most conservative case with either the inside or outside wall controlling, for any heatup rate up to 100 degrees F per hour and cooldown rates of up to 100 degrees F per hour. The heatup and cooldown curves were prepared based upon the most limiting value of predicted adjusted reference temperature at the end of the applicable service period (20 EFPY).

The reactor vessel materials have been tested to determine their initial RT_{NDT} ; the results of these tests are shown in Tables B 3/4.4-1 and B 3/4.4-2. Reactor operation and resultant fast neutron (E greater than 1 MeV) irradiation can cause an increase in the RT_{NDT} . Therefore, an adjusted reference temperature, based upon the fluence and chemistry factors of the material has been predicted using Regulatory Guide 1.99, Revision 2, dated May 1988, "Radiation Embrittlement of Reactor Vessel Materials." The heatup and cooldown limit curves of Figures 3.4-2, 3.4-3, and 3.4-4 include predicted adjustments for this shift in RT_{NDT} at the end of the applicable service period.

The actual shifts in RT_{NDT} of the vessel materials will be established periodically during operation by removing and evaluating, in accordance with ASTM E185-73 and 10 CFR Appendix H, reactor vessel material irradiation surveillance specimens installed near the inside wall of the reactor vessel in the core area. The surveillance specimen withdrawal schedule is shown in Table 4.4-5. Since the neutron spectra at the irradiation samples and vessel inside radius are essentially identical, the measured transition shift for a sample can be applied with confidence to the adjacent section of the reactor vessel.

Since the limiting beltline materials (Intermediate to Lower Shell Circumferential Weld) in Units 3 and 4 are identical, the RV surveillance program was integrated and the results from capsule testing is applied to both Units. The surveillance capsule "T" results from Unit 3 (WCAP 8631) and Unit 4 (SWRI 02-4221) and the capsule "V" results from Unit 3 (SWRI 06-8576) were used with the methodology in Regulatory Guide 1.99, Revision 2, to provide

the version of the ASTM E185 standard required by 10 CFR 50 Appendix H

1
①

REACTOR COOLANT SYSTEM

BASES

PRESSURE/TEMPERATURE LIMITS (Continued)

Finally, the 10 CFR 50 Appendix G rule which addresses the metal temperature of the closure head flange and vessel flange regions is considered. The rule states that the minimum metal temperature for the flange regions should be at least 120 F higher than the limiting RT_{NDT} for these regions when the pressure exceeds 20 percent of the preservice hydrostatic test pressure (621 psig). Since the limiting RT_{NDT} for the flange regions for Turkey Point Units 3 and 4 is 44 F, the minimum temperature required for pressure of 621 psig and greater based on the Appendix G rule is 164 F. The heatup and cooldown curves as shown in Figures 3.4-2 to ~~3.4-5~~ clearly satisfy the above requirement by ample margins.

Finally, the composite curves for the heatup rate data and the cooldown rate data are adjusted for possible errors in the pressure and temperature sensing instruments by the values indicated on the respective curves.

The limitations imposed on the pressurizer heatup and cooldown rates and spray water temperature differential are provided to assure that the pressurizer is operated within the design criteria assumed for the fatigue analysis performed in accordance with the ASME Code requirements.

OVERPRESSURE MITIGATING SYSTEM

The Technical Specifications provide requirements to isolate High Pressure Safety Injection from the RCS and to prevent the start of an idle RCP if secondary temperature is more than 50 F above the RCS cold leg temperatures. These requirements are designed to ensure that mass and heat input transients more severe than those assumed in the low temperature overpressurization protection analysis cannot occur.

The OPERABILITY of two PORVs or an RCS vent opening of at least 2.20 square inches ensures that the RCS will be protected from pressure transients which could exceed the limits of Appendix G to 10 CFR Part 50 when one or more of the RCS cold legs are less than or equal to 275°F. Either PORV has adequate relieving capability to protect the RCS from overpressurization when the transient is limited to either: (1) the start of an idle RCP with the secondary water temperature of the steam generator less than or equal to 50°F above the RCS cold leg temperatures including margin for instrument error, or (2) the start of a HPSI pump and its injection into a water-solid RCS. When the PORVs or 2.2 square inch area vent is used to mitigate a plant transient, a special report is submitted. However, minor increases in pressure resulting from planned plant actions, which are relieved by designated openings in the system, need not be reported.

REACTOR MATERIAL SURVEILLANCE PROGRAM

Each Type I capsule contains 28 V-notch specimens, ten Charpy specimens machined from each of the two shell forgings. The remaining eight Charpy specimens are machined from correlated monitor material. In addition, each

1-1-2