

FORD 1

REGULATORY INFORMATION DISTRIBUTION SYSTEM (RIDS)

ACCESSION NBR: 9312140160	DOC. DATE: 93/11/08	NOTARIZED: NO	DOCKET #
FACIL: 50-250 Turkey Point Plant, Unit 3, Florida Power and Light Co			05000250
50-251 Turkey Point Plant, Unit 4, Florida Power and Light Co			05000251
50-335 St. Lucie Plant, Unit 1, Florida Power & Light Co.			05000335
50-389 St. Lucie Plant, Unit 2, Florida Power & Light Co.			05000389

AUTH. NAME	AUTHOR AFFILIATION
MERSCHOFF, E. W.	Region 2 (Post 820201)
RECIP. NAME	RECIPIENT AFFILIATION
GOLDBERG, J. H.	Florida Power & Light Co.

SUBJECT: Summarizes 931101 meeting in Atlanta, GA re util presentation on staffing reductions.

DISTRIBUTION CODE: IE45D COPIES RECEIVED: LTR 1 ENCL 1 SIZE: 18
 TITLE: Summary of Significant Meeting with Licensee (Part 50)

NOTES:

	RECIPIENT ID CODE/NAME	COPIES	LTR	ENCL	RECIPIENT ID CODE/NAME	COPIES	LTR	ENCL
	RAGHAVAN, L	1		1	NORRIS, J	1		1
INTERNAL:	AEOD/DOA	1		1	AEOD/DSP/TPAB	1		1
	DEDRO	1		1	NRR/DRIL/RPEB	1		1
	NRR/PMAS/ILRB	1		1	NUDOCS-ABSTRACT	1		1
	DGC/ROED	1		1	<u>REG FILE</u> 02	1		1
	RES/DSIR/EIB	1		1	RGN2 FILE 01	1		1
EXTERNAL:	NRC PDR	1		1	NSIC	1		1

NOTE TO ALL "RIDS" RECIPIENTS:

PLEASE HELP US TO REDUCE WASTE! CONTACT THE DOCUMENT CONTROL DESK.
 ROOM P1-37 (EXT. 504-2065) TO ELIMINATE YOUR NAME FROM DISTRIBUTION
 LISTS FOR DOCUMENTS YOU DON'T NEED!

TOTAL NUMBER OF COPIES REQUIRED: LTR 14 ENCL 14

R
I
D
S
/
F
O
R
D
O
C
U
M
E
N
T



NOV - 8 1993

Docket Nos. 50-250, 50-251, 50-335, 50-389
License Nos. DPR-31, DPR-41, DPR-67, NPF-16

Florida Power and Light Company
ATTN: Mr. J. H. Goldberg
President - Nuclear Division
P. O. Box 14000
Juno Beach, FL 33408-0420

Gentlemen:

SUBJECT: MEETING SUMMARY - STAFFING REDUCTIONS AT FLORIDA POWER AND LIGHT
COMPANY

This letter refers to the meeting conducted at your request at the NRC Region II offices in Atlanta on November 1, 1993. The purpose of the meeting was to allow Florida Power and Light Company (FPL) to make a presentation on staffing reductions at FPL.

It is our opinion that this meeting was beneficial and provided a better understanding of the issues and status of staffing levels.

In accordance with Section 2.790 of the NRC's "Rules of Practice," Part 1, Title 10, Code of Federal Regulations, a copy of this letter and its enclosures will be placed in the NRC Public Document Room.

Should you have any questions concerning this letter, please let us know.

Sincerely,



Ellis W. Merschoff, Director
Division of Reactor Projects

130004

Enclosures:

1. List of Attendees
2. Presentation Summary

cc w/encls:

D. A. Sager
Site Vice President
St. Lucie Nuclear Plant
P. O. Box 128
Ft. Pierce, FL 34954-0128

cc w/encls cont'd: (See page 2)

9312140160 931108
PDR ADOCK 05000250
P PDR

IE48

T. F. Plunkett
Site Vice President
Turkey Point Nuclear Plant
P. O. Box 029100
Miami, FL 33102

L. W. Pearce
Plant General Manager
Turkey Point Nuclear Plant
P. O. Box 029100
Miami, FL 33102

T. V. Abatiello
Site Quality Manager
Turkey Point Nuclear Plant
P. O. Box 029100
Miami, FL 33102

E. J. Weinkam
Licensing Manager
Turkey Point Nuclear Plant
P. O. Box 029100
Miami, FL 33102

H. N. Paduano, Manager
Licensing and Special Projects
Florida Power and Light Company
P. O. Box 14000
Juno Beach, FL 33408-0420

C. L. Burton
Plant General Manager
St. Lucie Nuclear Plant
P. O. Box 128
Ft. Pierce, FL 34954-0128

Harold F. Reis, Esq.
Newman & Holtzinger
1615 L Street, NW
Washington, D. C. 20036

John T. Butler, Esq.
Steel, Hector and Davis
400 Southeast Financial Center
Miami, FL 33131-2398

cc w/encls cont'd: (See page 3)

cc w/encls cont'd:
Bill Passetti
Department of Health and
Rehabilitative Services
1317 Winewood Boulevard
Tallahassee, FL 32399-0700

bcc w/encls:
K. Landis, RII
J. Norris, NRR
L. Raghavan, RII
St. Lucie Resident Inspector
Turkey Point Resident Inspector
Document Control Room

Attorney General
Department of Legal Affairs
The Capitol
Tallahassee, FL 32304

Administrator
Department of Environmental
Regulation
Power Plant Siting Section
State of Florida
2600 Blair Stone Road
Tallahassee, FL 32301

Joaquin Avino
County Manager of Metro Dade
County
111 NW 1st Street, 29th Floor
Miami, FL 33128

Jack Shreve
Public Counsel
Office of the Public Counsel
c/o The Florida Legislature
111 West Madison Avenue, Room 812
Tallahassee, FL 32399-1400

Joe Myers, Director
Division of Emergency Preparedness
2740 Centerview Drive
Tallahassee, FL 32399-2100

Thomas R. L. Kindred
County Administrator
2300 Virginia Avenue
Ft. Pierce, FL 34982

Charles B. Brinkman
Washington Nuclear Operations
12300 Twinbrook Parkway, Suite 3300
Rockville, MD 20852

RII:DRP RII:DRP RII:DRP
RS *KL* *MS* *JB*
RSchin KLandis MSinkule
11/4/93 11/4/93 11/4/93

ENCLOSURE 1

LIST OF ATTENDEES

NRC

S. D. Ebnetter, Regional Administrator, Region II (RII)
L. A. Reyes, Deputy Regional Administrator, RII
E. W. Merschoff, Director, Division of Reactor Projects (DRP), RII
J. P. Stohr, Director, Division of Radiation Safety and Safeguards, RII
H. N. Berkow, Director, Project Directorate II-2, DRP-I/II, Office of Nuclear
Reactor Regulation (NRR)
M. V. Sinkule, Chief, Reactor Projects Branch 2, DRP, RII
K. D. Landis, Chief, Reactor Projects Section 2B (RP2B), DRP, RII

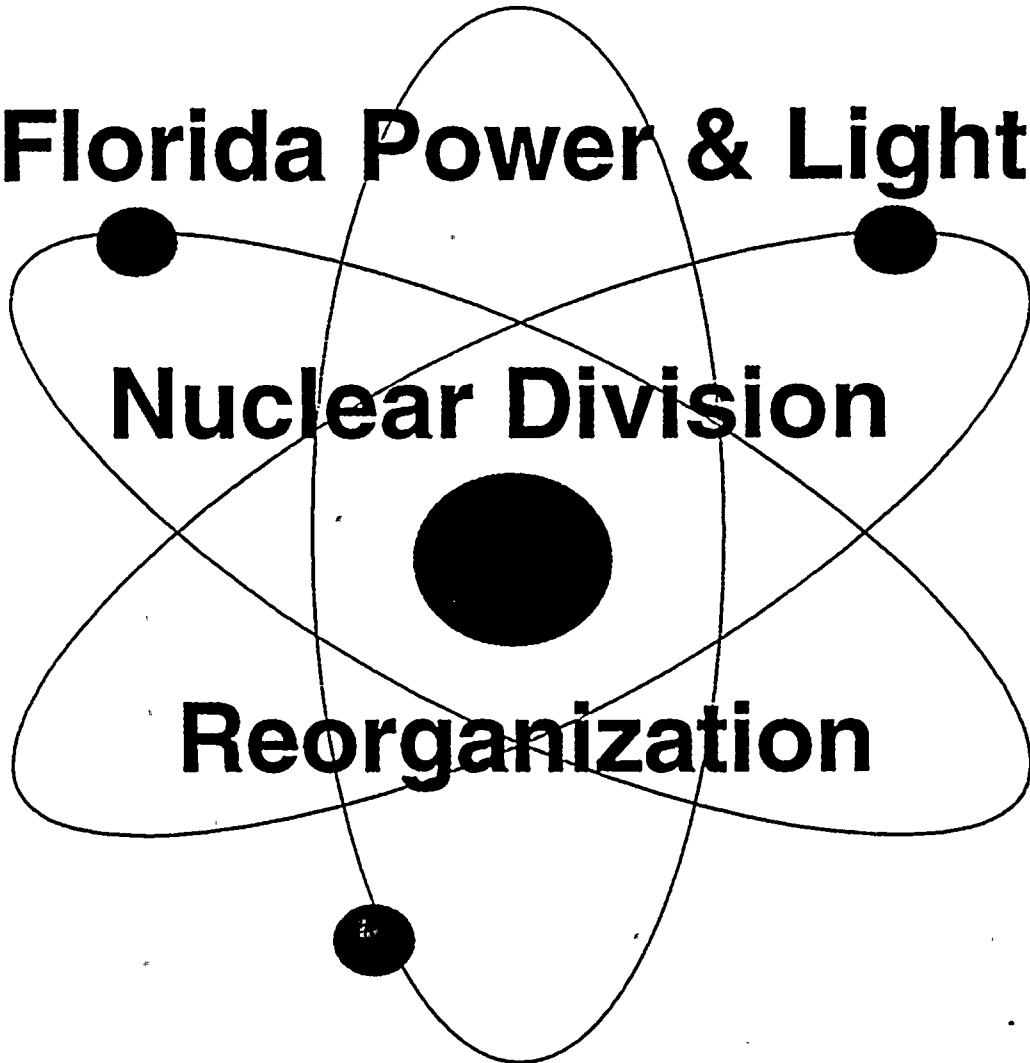
FPL

J. H. Goldberg, President, Nuclear Division
W. H. Bohike, Vice President, Nuclear Engineering and Licensing
C. H. Shotwell, Manager, Nuclear Human Resources

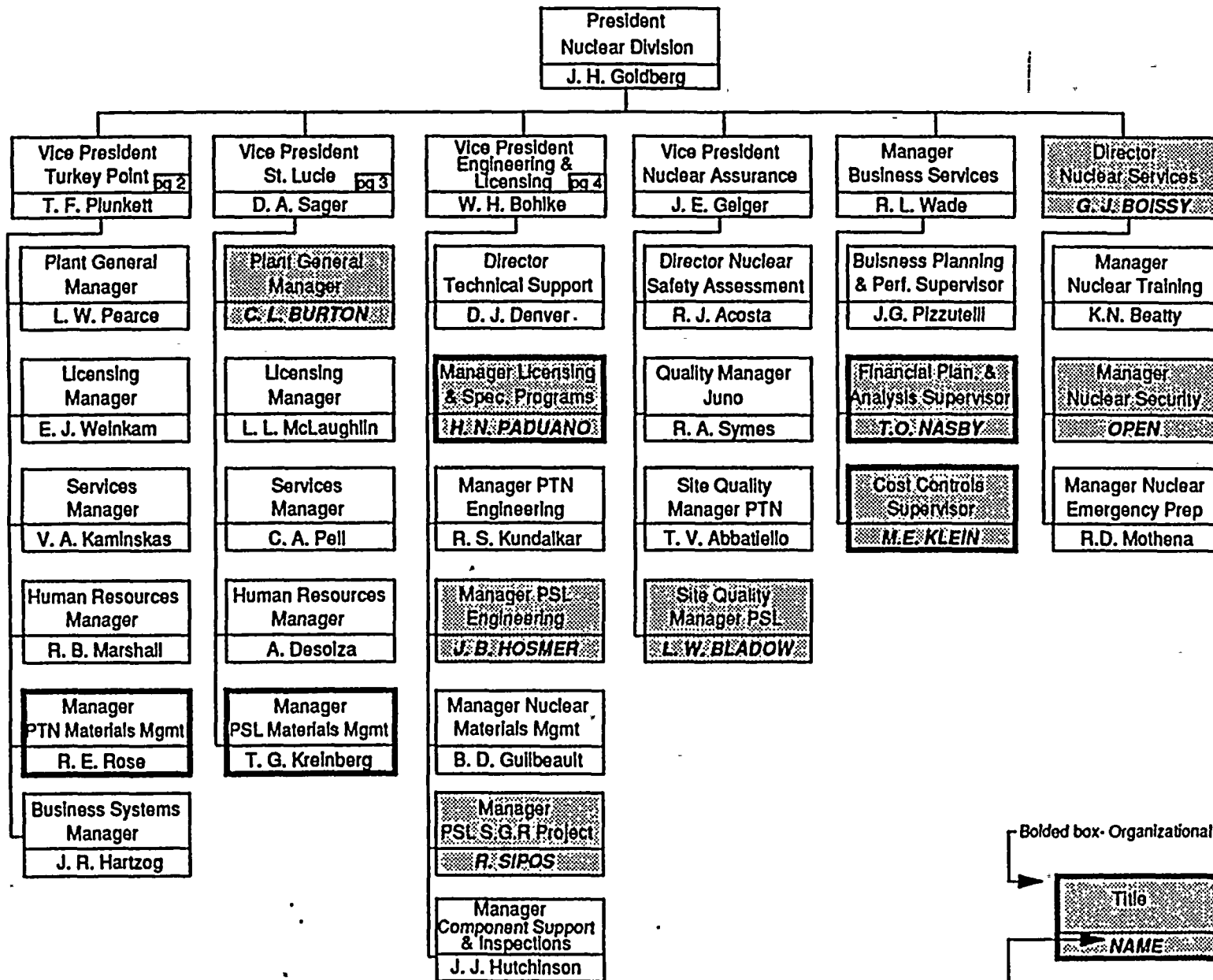
Florida Power & Light

Nuclear Division

Reorganization



FPL NUCLEAR DIVISION



Bolded box - Organizational Change

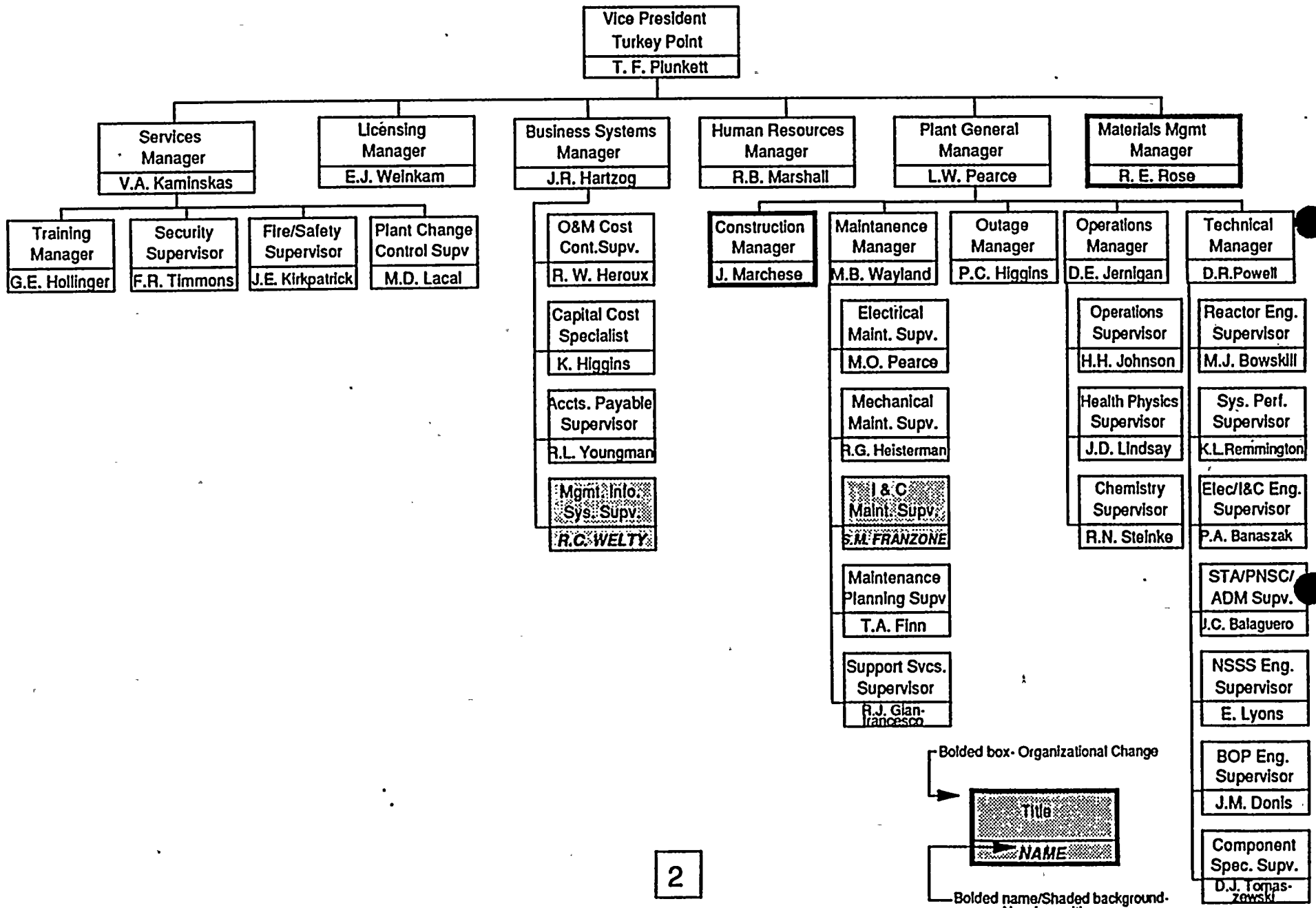


Bolded name/Shaded background -
New In position

ORG1-10/93



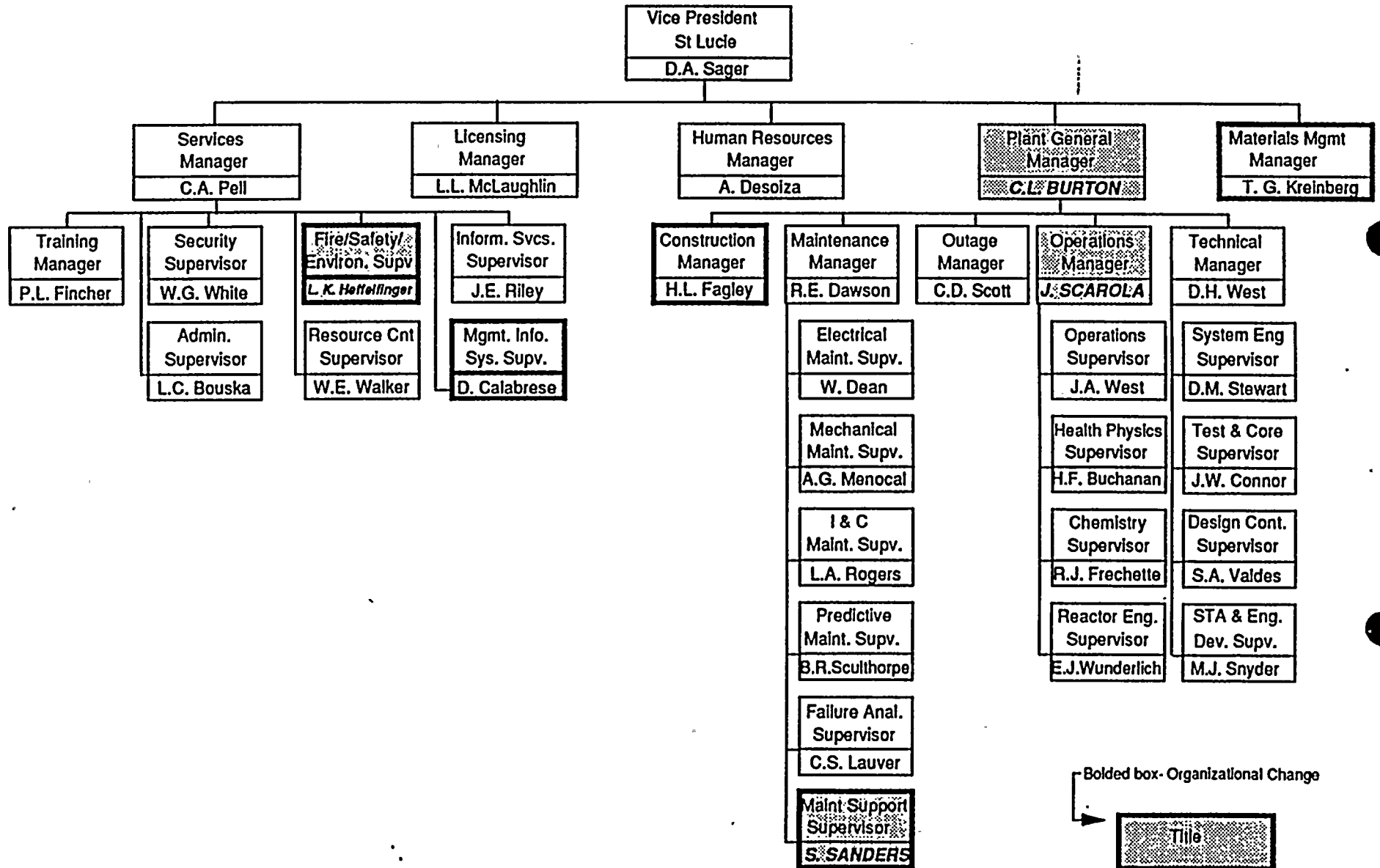
TURKEY POINT NUCLEAR PLANT



Bolded box - Organizational Change

Bolded name/Shaded background - New in position

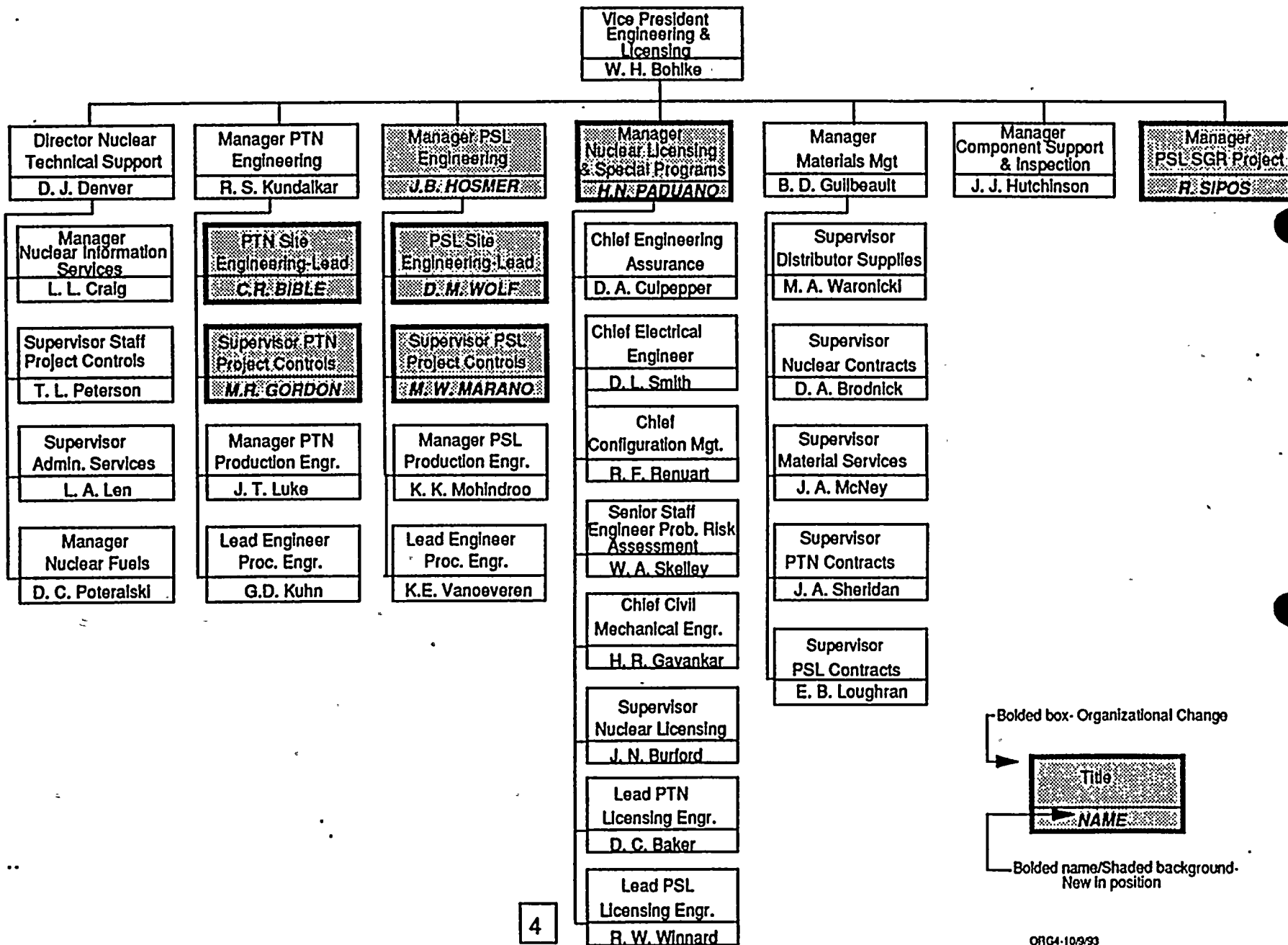
ST LUCIE NUCLEAR PLANT



Bolded box - Organizational Change

Bolded name/Shaded background - New in position

ENGINEERING & LICENSING



Bolded box - Organizational Change

Bolded name/Shaded background - New in position

NUCLEAR DIVISION STAFFING SUMMARY

STAFFING	HEADQUARTERS			TURKEY POINT	ST. LUCIE	TOTAL
	ENGINEERING AND LICENSING	QUALITY ASSURANCE	OTHER			
NUMBER OF EMPLOYEES BEFORE REORGANIZATION (8/10/93)	559	145	117	793	760	2374
NUMBER OF EXITED EMPLOYEES	- 57	- 13	- 12	- 44	- 44	- 170
NUMBER OF EMPLOYEES IMPACTED BY ORGANIZATION CHANGE	- 93	0	- 66	+ 69	+ 73	- 17
NUMBER OF EMPLOYEES AFTER REORGANIZATION (10/26/93)	395	126	41	814	791	2167



NUCLEAR STAFF EMPLOYEES IMPACTED BY THE REORGANIZATION

ENGINEERING AND LICENSING

NUCLEAR ENGINEERING

JOB DESCRIPTION	# VRP EMPLOYEES	# SSP EMPLOYEES
I&C Maintenance Supervisor	1	
Staff Engineer-N	1	
Principal Engineer-N		2
Engineer-N/Analyst-N	3	15
Consultant-N	1	
Specialist-N		1
Designer-N		3
Document Ctrl Technician		1
Engineering Technician		1
Administrative Specialist		4
Office Clerk		1

NUCLEAR LICENSING

JOB DESCRIPTION	# VRP EMPLOYEES	# SSP EMPLOYEES
Principal Engineer-N	1	1
Staff Engineer-N	1	
Specialist-N		1
Staff Technician		2

INFORMATION MANAGEMENT

JOB DESCRIPTION	# VRP EMPLOYEES	# SSP EMPLOYEES
Principal Engineer		1
Site Information Analyst		1
Information Analyst Analyst-N	1	1

MGMT CNT-PROJECT CONTROL

JOB DESCRIPTION	# VRP EMPLOYEES	# SSP EMPLOYEES
Project Controls Manager-N		1
Analyst-N		2

MGMT CNTRL-ADM SVCS

JOB DESCRIPTION	# VRP EMPLOYEES	# SSP EMPLOYEES
Analyst-N	1	
Secretary	2	
Administrative Specialist		1
Office Clerk		1

NUCLEAR MATERIAL MANAGEMENT

JOB DESCRIPTION	# VRP EMPLOYEES	# SSP EMPLOYEES
Specialist-N		1
Analyst-N		2
Administrative Specialist		2

TOTAL # OF IMPACTED EMPLOYEES: 12 45

NOTE: VRP= Voluntary Retirement Plan SSP= Social Severance Plan



NUCLEAR STAFF EMPLOYEES IMPACTED BY THE REORGANIZATION

QUALITY ASSURANCE

NUCLEAR ASSURANCE-PSL

JOB DESCRIPTION	# VRP EMPLOYEES	# SSP EMPLOYEES
Site Quality Manager-N	1	
Engineer-N/Analyst-N	2	1
QC Specialist-N		1

ISEG-PSL

JOB DESCRIPTION	# VRP EMPLOYEES	# SSP EMPLOYEES
Site Engineer-N	1	

NUCLEAR ASSURANCE-PTN

JOB DESCRIPTION	# VRP EMPLOYEES	# SSP EMPLOYEES
QC Specialist	1	3
Site Engineer		1
Office Clerk Site		1

ISEG-PTN

JOB DESCRIPTION	# VRP EMPLOYEES	# SSP EMPLOYEES
Site Analyst	1	

TOTAL # OF IMPACTED EMPLOYEES: 6 7

NOTE: VRP= Voluntary Retirement Plan SSP= Special Severance Plan

NUCLEAR STAFF EMPLOYEES IMPACTED BY THE REORGANIZATION

HUMAN RESOURCES		
JOB DESCRIPTION	# VRP EMPLOYEES	# SSP EMPLOYEES
Operations Superintendent-Nuc-R	1	
Senior Analyst-N		2
Administrative Specialist		1
TOTAL # OF IMPACTED EMPLOYEES:		3
NOTE: VRP= Voluntary Retirement Plan SSP= Special Severance Plan		

NUCLEAR SERVICES		
JOB DESCRIPTION	# VRP EMPLOYEES	# SSP EMPLOYEES
Director Nuclear Services	1	
Manager Nuclear Security	1	
Engineer-N/Analyst-N	1	2
TOTAL # OF IMPACTED EMPLOYEES:		2
NOTE: VRP= Voluntary Retirement Plan SSP= Special Severance Plan		

NUCLEAR SERVICES		
JOB DESCRIPTION	# VRP EMPLOYEES	# SSP EMPLOYEES
Specialist		1
Analyst		2
TOTAL # OF IMPACTED EMPLOYEES:		3
NOTE: VRP= Voluntary Retirement Plan SSP= Special Severance Plan		



TURKEY POINT EMPLOYEES IMPACTED BY THE REORGANIZATION

PLANT MANAGER

MECHANICAL MAINTENANCE

JOB DESCRIPTION	# VRP EMPLOYEES	# SSP EMPLOYEES
Senior Plant Analyst	1	
Machinist N	1	
Machinist N - SC	1	
Mechanic N	3	
Mechanic N - SC	1	

INSTRUMENT & CONTROL

JOB DESCRIPTION	# VRP EMPLOYEES	# SSP EMPLOYEES
I&C Maintenance Supervisor-N	1	
Section Supervisor-N	1	

ELECTRICAL

JOB DESCRIPTION	# VRP EMPLOYEES	# SSP EMPLOYEES
Section Supervisor	1	

HEALTH PHYSICS

JOB DESCRIPTION	# VRP EMPLOYEES	# SSP EMPLOYEES
Plant Supervisor-N	1	
Plant Technician	1	1

OPERATIONS

JOB DESCRIPTION	# VRP EMPLOYEES	# SSP EMPLOYEES
Senior Plant Analyst-N		1

TECHNICAL

JOB DESCRIPTION	# VRP EMPLOYEES	# SSP EMPLOYEES
Plant Engineer-N		1
Plant Specialist-N	1	

OUTAGE MANAGEMENT

JOB DESCRIPTION	# VRP EMPLOYEES	# SSP EMPLOYEES
Plant Analyst-N	1	

MAINTENANCE PLANNING

JOB DESCRIPTION	# VRP EMPLOYEES	# SSP EMPLOYEES
Senior Maint Planner	1	1

PTN CONSTRUCTION

JOB DESCRIPTION	# VRP EMPLOYEES	# SSP EMPLOYEES
Area Construction Supervisor-N	1	
Construction Specialist-N		1
Site Analyst-N		1

TOTAL # OF IMPACTED EMPLOYEES: 15 5

NOTE: VRP= Voluntary Retirement Plan SSP= Social Severance Plan



TURKEY POINT EMPLOYEES IMPACTED BY THE REORGANIZATION

SERVICES

SECURITY

JOB DESCRIPTION	# VRP EMPLOYEES	# SSP EMPLOYEES
Plant Analyst-N		2

BUSINESS SYSTEMS

JOB DESCRIPTION	# VRP EMPLOYEES	# SSP EMPLOYEES
Plant Analyst-N		2
Plant Technician		1

TRAINING

JOB DESCRIPTION	# VRP EMPLOYEES	# SSP EMPLOYEES
Engineer-N/Analyst-N	3	2

FIRE PROTECTION

JOB DESCRIPTION	# VRP EMPLOYEES	# SSP EMPLOYEES
Plant Analyst-N,		1

PLANT CHANGE CNT

JOB DESCRIPTION	# VRP EMPLOYEES	# SSP EMPLOYEES
Plant Analyst-N		1
Plant Technician	1	

SUPPORT SERVICES

JOB DESCRIPTION	# VRP EMPLOYEES	# SSP EMPLOYEES
Plant Engineer-N		1
Senior Performance Technician		1

TOTAL # OF IMPACTED EMPLOYEES: 4 11

NOTE: VRP= Voluntary Retirement Plan SSP= Special Severance Plan



TURKEY POINT EMPLOYEES IMPACTED BY THE REORGANIZATION

MATERIALS MANAGEMENT

JOB DESCRIPTION	# OF VOLUNTARY RETIREMENT PLAN EMPLOYEES	# OF SPECIAL SEVERANCE PLAN EMPLOYEES
Procurement Supervisor	1	
Site Material Mgt Supervisor	1	
Site Analyst-N	1	2
Inventory Control Specialist		2
Stock Clerk		1

TOTAL # OF IMPACTED EMPLOYEES: 3 5



ST. LUCIE EMPLOYEES IMPACTED BY THE REORGANIZATION

PLANT MANAGER

MECHANICAL MAINTENANCE

JOB DESCRIPTION	# VRP EMPLOYEES	# SSP EMPLOYEES
Plant Supervisor		2
Maintenance Specialist		1
Senior Plant Technician	1	
Mechanic	3	

INSTRUMENT & CONTROL

JOB DESCRIPTION	# VRP EMPLOYEES	# SSP EMPLOYEES
Senior Plant Supervisor	2	
Section Supervisor	1	
Senior Maintenance Planner	1	2
Instrument Control Specialist	2	
Inst Cntrl Spec Dgt-Nuc	2	

ELECTRICAL MAINTENANCE

JOB DESCRIPTION	# VRP EMPLOYEES	# SSP EMPLOYEES
Senior Plant Supervisor	1	1
Senior Maintenance Planner		2
Senior Performance Technician		1

OPERATIONS

JOB DESCRIPTION	# VRP EMPLOYEES	# SSP EMPLOYEES
Senior Nuclear Plant Operator	1	
Senior Plant Technician	1	

CHEMISTRY

JOB DESCRIPTION	# VRP EMPLOYEES	# SSP EMPLOYEES
Senior Plant Analyst	1	

PSL CONSTRUCTION

JOB DESCRIPTION	# VRP EMPLOYEES	# SSP EMPLOYEES
Construction Supervisor-N	1	
Engineer-N/Analyst-N	3	

TOTAL # OF IMPACTED EMPLOYEES: 20 9

NOTE: VRP= Voluntary Retirement Plan SSP= Special Severance Plan

ST. LUCIE EMPLOYEES IMPACTED BY THE REORGANIZATION

SERVICES

RESOURCE CONTROL

JOB DESCRIPTION	# VRP EMPLOYEES	# SSP EMPLOYEES
Performance Technician		1

TRAINING

JOB DESCRIPTION	# VRP EMPLOYEES	# SSP EMPLOYEES
Senior Plant Supervisor	1	
Senior Plant Analyst	1	
Inst Cntrl Spec Dgt Nuc-Sc	1	

FIRE SAFETY

JOB DESCRIPTION	# VRP EMPLOYEES	# SSP EMPLOYEES
Fire Prot/Safety Supervisor-N	1	

TOTAL # OF IMPACTED EMPLOYEES: 4 1

MATERIALS MANAGEMENT

JOB DESCRIPTION	# VRP EMPLOYEES	# SSP EMPLOYEES
Procurement Supervisor	1	
Inventory Control Specialist		5
Materials Mgt Tech - Site		1
Senior Administrative Specialist		1
Stock Clerk		1

TOTAL # OF IMPACTED EMPLOYEES: 1 8

HUMAN RESOURCES

JOB DESCRIPTION	# VRP EMPLOYEES	# SSP EMPLOYEES
Senior Plant Analyst	1	

TOTAL # OF IMPACTED EMPLOYEES: 1 0

NOTE: VRP= Voluntary Retirement Plan ·SSP= Special Severance Plan

file: ps1svcs.drw