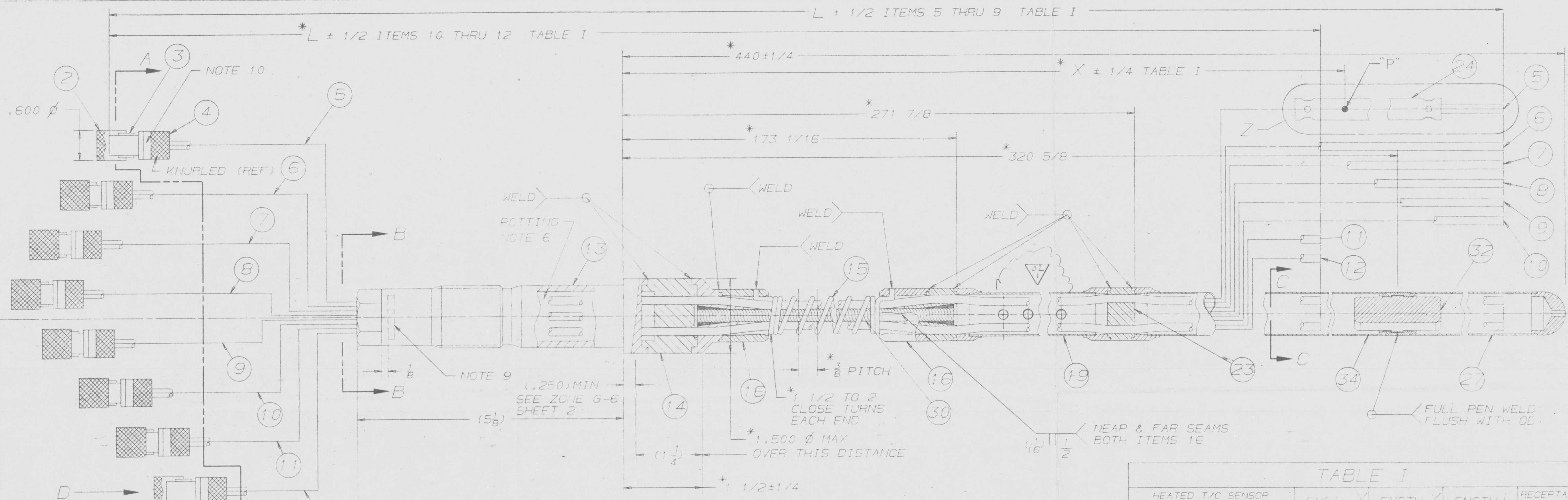


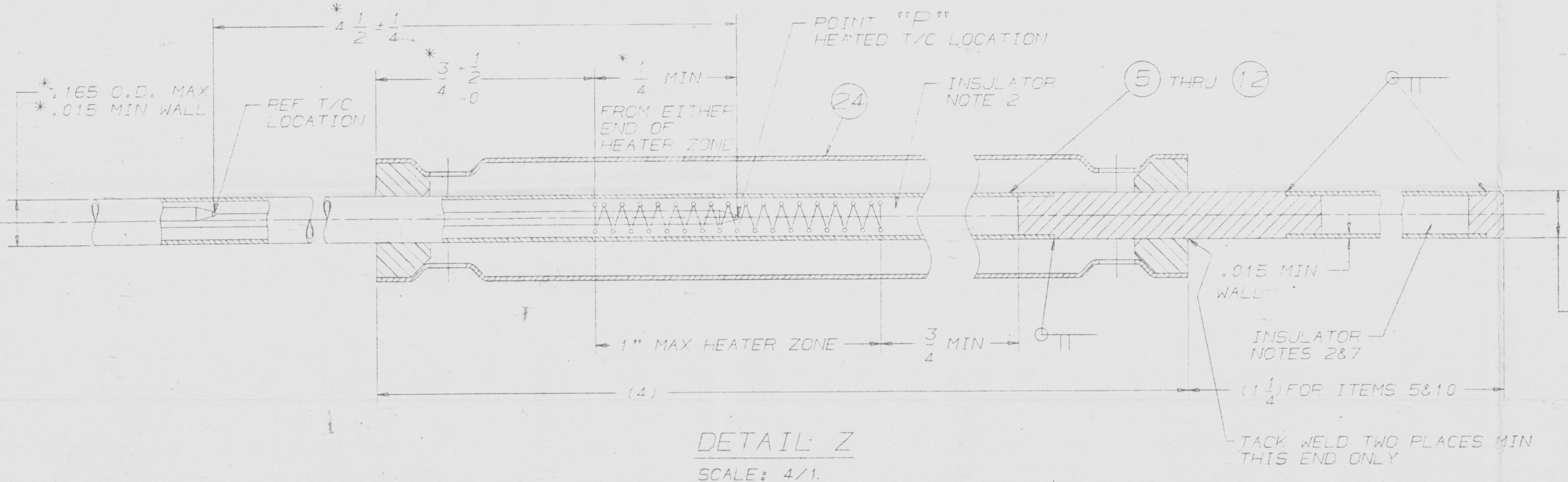
ITEM NO.	QUANTITY	NAME	PIECE NO.	MATERIAL	REMARKS
1	1	FLEXIBLE HJTC PROBE ASSY	E-WEST-849-506-1		
2	2	DUST CAP		300 SERIES SS	NOTE 8
3	3	RECEPTACLE		300 SERIES SS	NOTE 4
4	4	RECEPTACLE SLEEVE		300 SERIES SS	NOTE 4
5	5	HJTC SENSOR			NOTE 2
6	6	HJTC SENSOR			NOTE 2
7	7	HJTC SENSOR			NOTE 2
8	8	HJTC SENSOR			NOTE 2
9	9	HJTC SENSOR			NOTE 2
10	10	HJTC SENSOR			NOTE 2
11	11	HJTC SENSOR			NOTE 2
12	12	HJTC SENSOR			NOTE 2
13	13	SEAL PLUG		1700 304 SS	
14	14	HEADER		1700 304 SS	
15	15	WIRE		1700 304 SS	.003 Ø
16	16	CLAMP SET		1700 304 SS	
17	17	SEPARATOR DISC		1700 304 SS	
18	18	SEPARATOR DISC		1700 304 SS	
19	19	UPPER TUBE ASSY		1700 304 SS	
20	20	UPPER TUBE		1700 304 SS	
21	21	ADAPTOR		1700 304 SS	
22	22	WIRE ROPE		300 SERIES	7 X 1/8 PREFORMED REGULAR LAY
23	23	DIVIDER DISC		1700 304 SS	
24	24	FLASH GUARD ASSY		1700 304 SS	
25	25	PLUG		1700 304 SS	
26	26	TUBE		1700 304 SS	
27	27	LOWER TUBE ASSY		1700 304 SS	
28	28	LOWER TUBE		1700 304 SS	
29	29	CAP		1700 304 SS	
30	30	CABLE ASSY			
31	31	DRIVE NUT		1700 304 SS	
32	32	DIVIDER		1700 304 SS	
33	33	SPRING FLANGE		1700 304 SS	
34	34	MIDDLE TUBE ASSY		1700 304 SS	
35	35	MIDDLE TUBE		1700 304 SS	



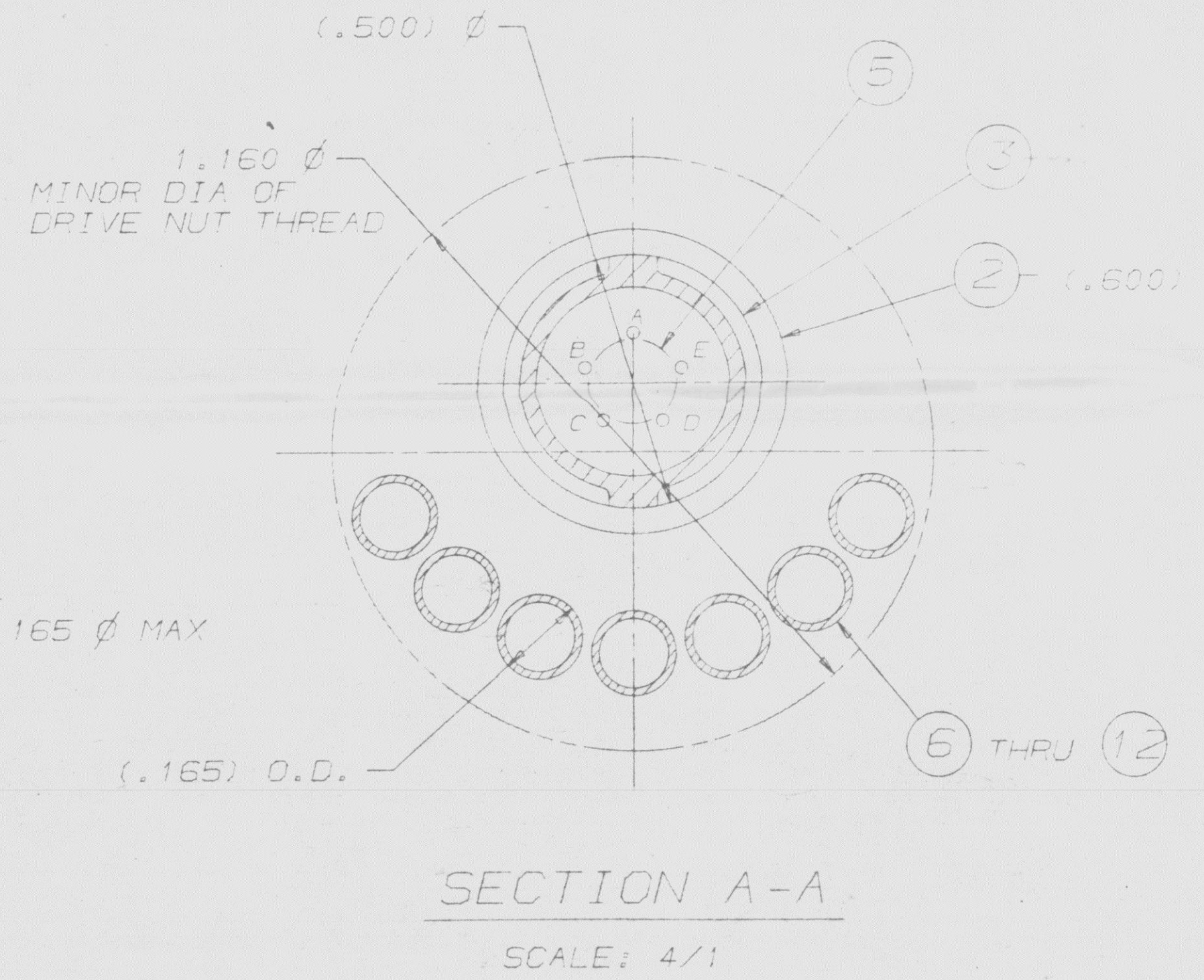
① FLEXIBLE HEATED JUNCTION T/C PROBE ASSY
ITEM 31 NOT SHOWN
SCALE: 1/1

TABLE I

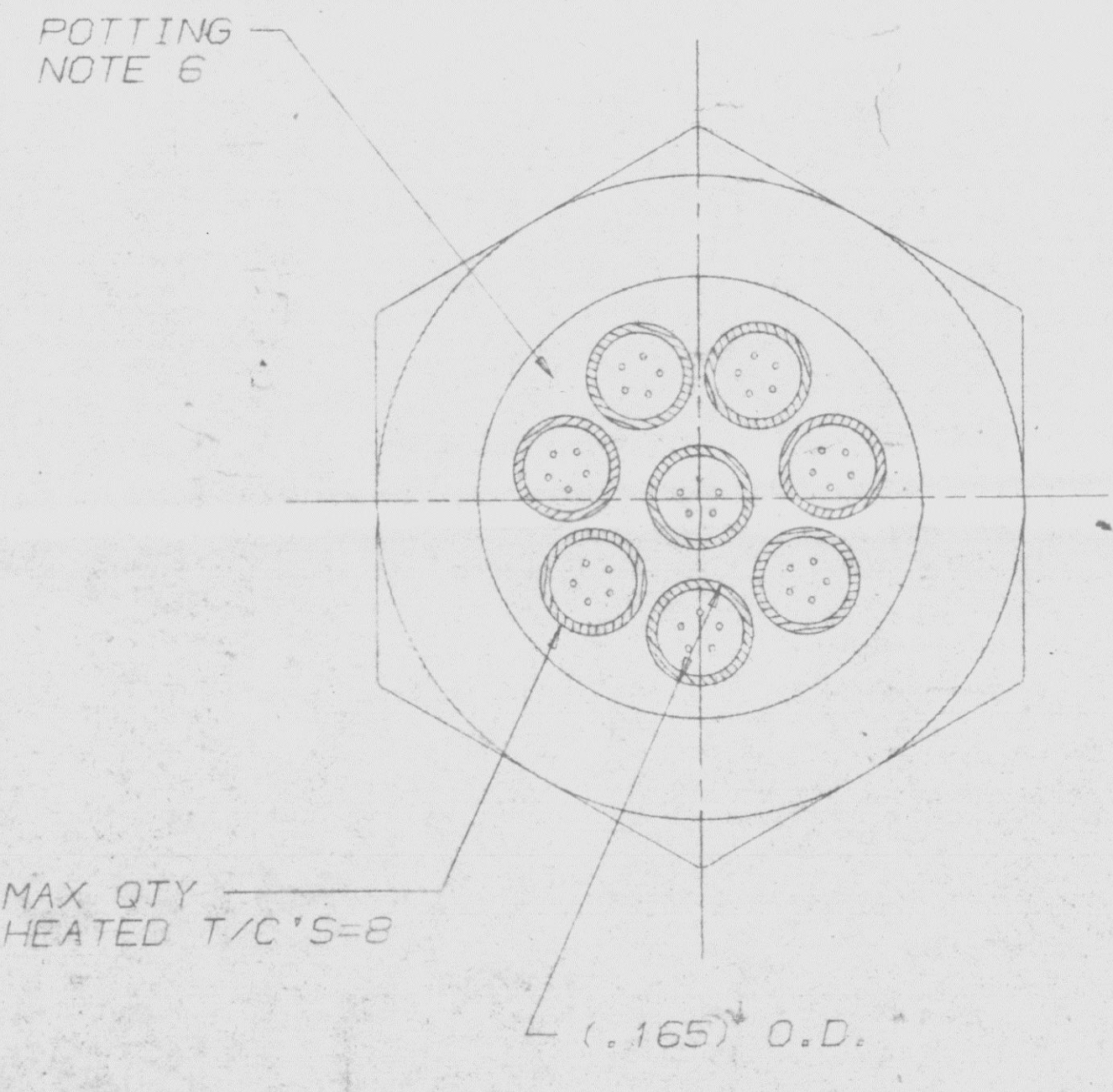
HEATED T/C SENSOR ITEM NO.	LENGTH X	LENGTH Y	LENGTH L	RECEPTACLE IDENTITY NO.
E-WEST-849-501-5	433	9	45 3/8	* 8
E-WEST-849-501-6	416 1/2	11 1/2	45 3/8	* 7
E-WEST-849-501-7	402	14	45 3/8	* 6
E-WEST-849-501-8	387 1/2	16 1/2	45 3/8	* 5
E-WEST-849-501-9	358 5/16	19	46 1/8	* 4
E-WEST-849-501-10	329 1/8	21 1/2	46 3/8	* 3
E-WEST-849-501-11	315	24	34 3/8	* 2
E-WEST-849-501-12	277 7/8	26 1/2	35 3/8	* 1



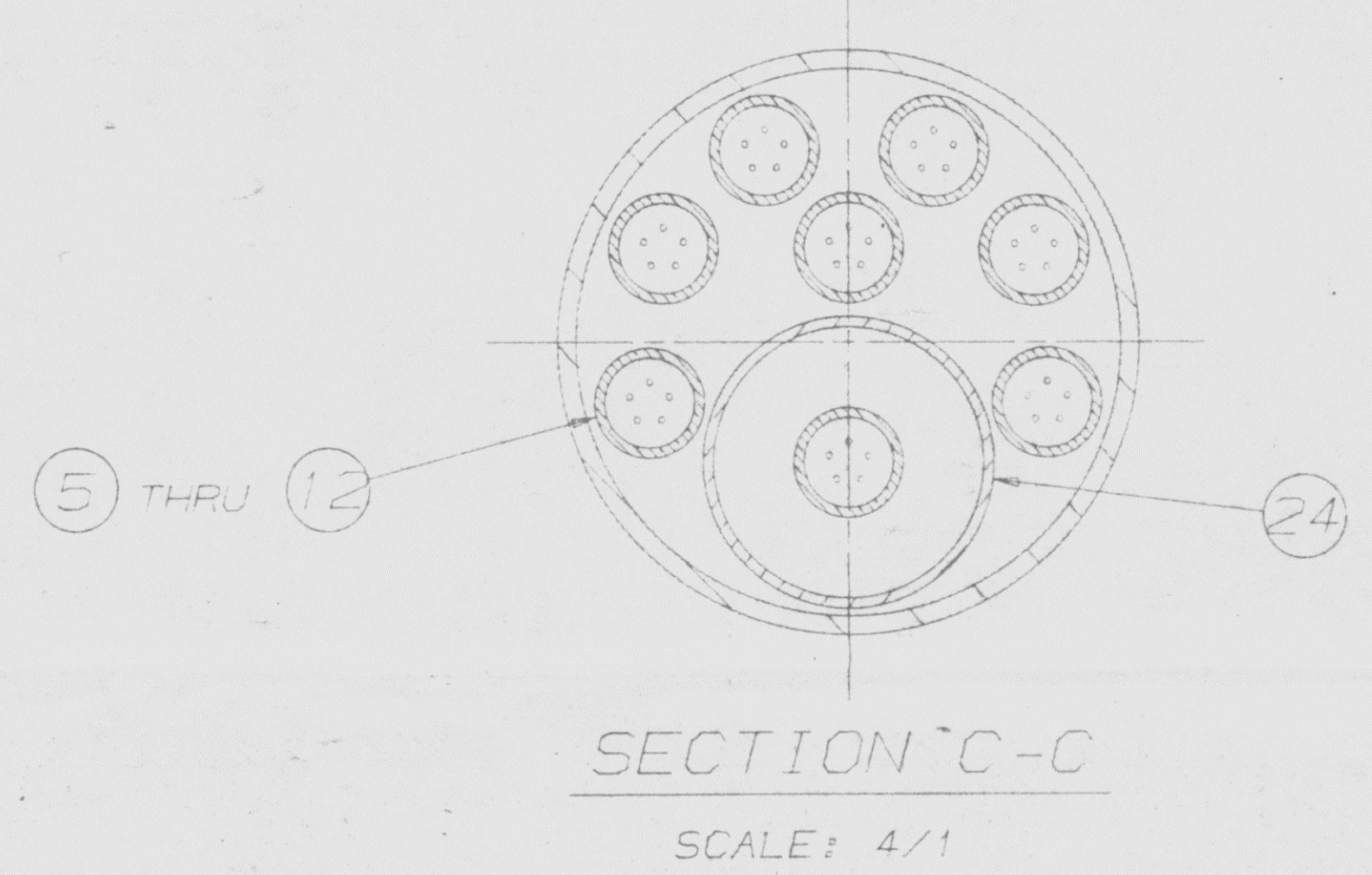
DETAIL Z
SCALE: 4/1



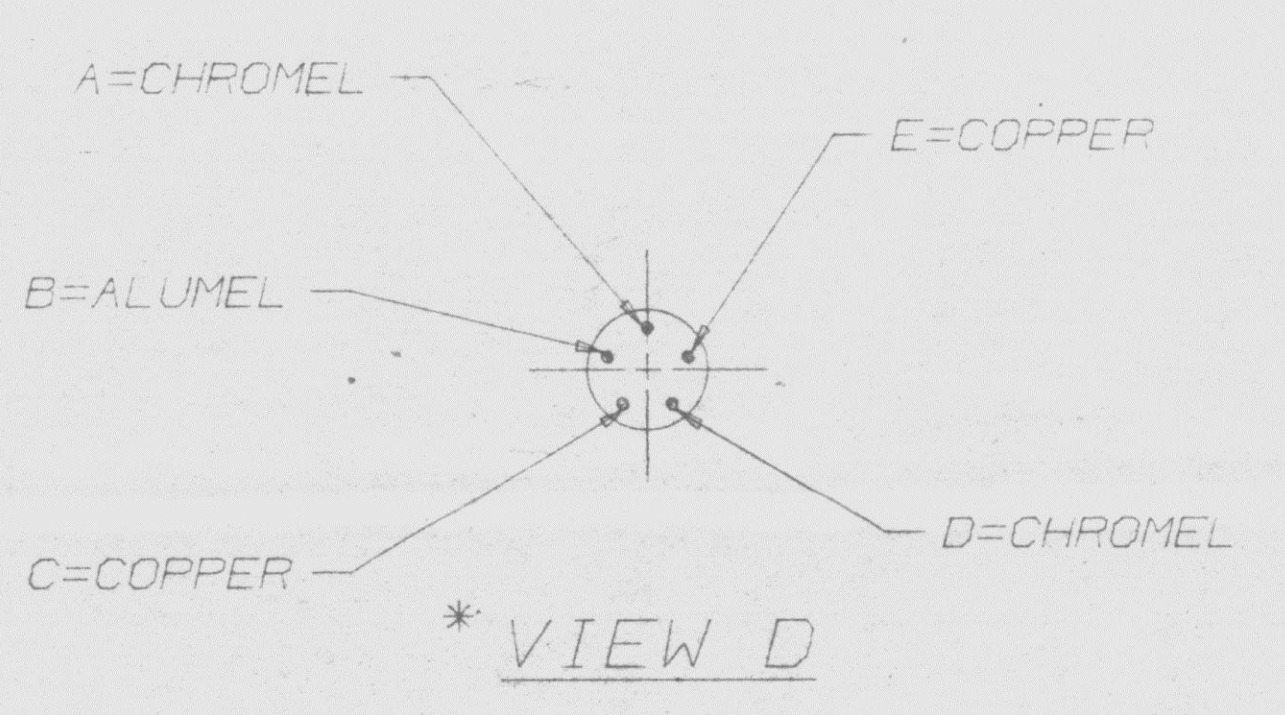
SECTION A-A
SCALE: 4/1



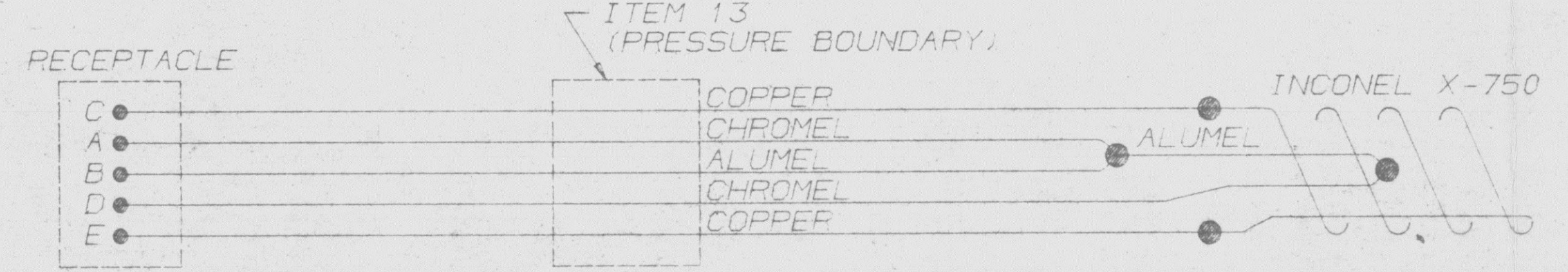
SECTION B-B
SCALE: 4/1



SECTION C-C
SCALE: 4/1



* VIEW D
SHOWING ORIENTATION OF RECEPTACLE CONDUCTORS
ITEM 2 NOT SHOWN
SCALE: 1/1



* ELECTRICAL SCHEMATIC ITEMS 5 THRU 12
SCALE: NONE

- ELECTROETCH RECEPTACLE IDENTITY NUMBER AS DESIGNATED IN TABLE I, .150 INCH HIGH IN AREA SHOWN ON ITEM 4
- ELECTROETCH CONTRACT IDENTITY NUMBER, PART NUMBER, SERIAL NUMBER AND DATE OF MANUFACTURE .150 INCH HIGH IN AREA SHOWN ON ITEM 13
- ITEM 2: G&H TECHNOLOGY 100B-205-001
- NON-ACTIVE PORTION OF ITEMS 5 THRU 12 MAY BE FABRICATED FROM SOLID ROD WITH PURCHASER APPROVAL. SOLID ROD TO BE PER ASTM A-479 TYPE 304 SS
- POT SEAL ITEM 13 INTERIOR WITH CERAMACAST 511 OR PURCHASER APPROVED EQUIVALENT
- CHROME PLATE ITEM 13 THREADS PER QQ-C-320B CLASS 2B .0004-.0008 THICK. ALL DIMENSIONS APPLY AFTER PLATING
- ITEM 3: PER G&H TECHNOLOGY PART NO. 100B-200, MATING PLUG (NOT SHOWN). TO BE G&H PART NO. 100B-100. ITEM 3 MUST INCLUDE ITEM 4
- INDICATED FEATURES REFERENCED BY ASTERISK (*) ARE PURCHASER DESIGN REQUIREMENTS WHICH SUPPLIER MUST MEET. ALL OTHER FEATURES, BRAZED & WELDED JOINTS SHALL BE DESIGNED BY SUPPLIER WITH APPROVAL REQUIRED BY CENPS
- PRODUCT TO BE IN ACCORDANCE WITH CENPS SPEC #00000-FEA-5001
- UNLESS OTHERWISE SPECIFIED, ALL DIMENSIONS ARE IN INCHES

E-WEST-849-508
SHEET 1 OF 2 02

REGULATORY DOCKET FILE COPY POOR ORIGINAL

DocId: 50-250
Control #: 6001602247
Data File: 65 of Document
REGULATORY DOCKET FILE

APPROVED REFERENCE DESIGN

APPROVED REFERENCE DESIGN

APPROVED REFERENCE DESIGN

REV.	DESCRIPTION	DATE	BY	CHKD	APPD	UNLESS OTHERWISE SPECIFIED	POWER SYSTEMS	CUSTOMER	TITLE
1	APPROVED REFERENCE DESIGN & ADDED QA STATUS LABEL PER REV REQ 800506-75					DIMENSIONING & TOLERANCING PER ANSI Y14.5 1975		TURKEY POINT	FLEXIBLE HJTC PROBE ASSY
2	ZONE G-S: REVISED HOLE PATTERN [2-DELETED NOTE 1] FOR OTHER CHANGES SEE SAT 2 PER REV REQ 15381-333					DIMENSIONS UNDER 6" 6-18 OVER 18 DECIMAL .005 .005 .010 FRACTION 1/32 1/16 1/8			