

any consecutive 6 month period, prepare and submit a Special Report to the Commission pursuant to Specification 6.9.3 within 30 days indicating the number of hours above this limit.

- b. With the specific activity of the primary coolant greater than 1.0 microcurie per gram DOSE EQUIVALENT I-131 for more than 48 hours during one continuous time interval or exceeding the limit line shown on Figure 3.1-1, be in a SHUTDOWN condition with average reactor coolant temperature less than 500 F within 6 hours.
- c. With the specific activity of the primary coolant greater than $100/\bar{E}$ microcuries per gram, be in a SHUTDOWN condition with average reactor coolant temperature less than 500 F within 6 hours.

2. For all modes of operation

- a. With the specific activity of the primary coolant greater than 1.0 microcurie per gram DOSE EQUIVALENT I-131 or greater than $100/\bar{E}$ microcuries per gram, perform the sampling and analysis requirements of item 1.h.1 of Table 4.1-2 until the specific activity of the primary coolant is restored to within its limits.

8605200334 860513
PDR ADCK 05000250
P PDR

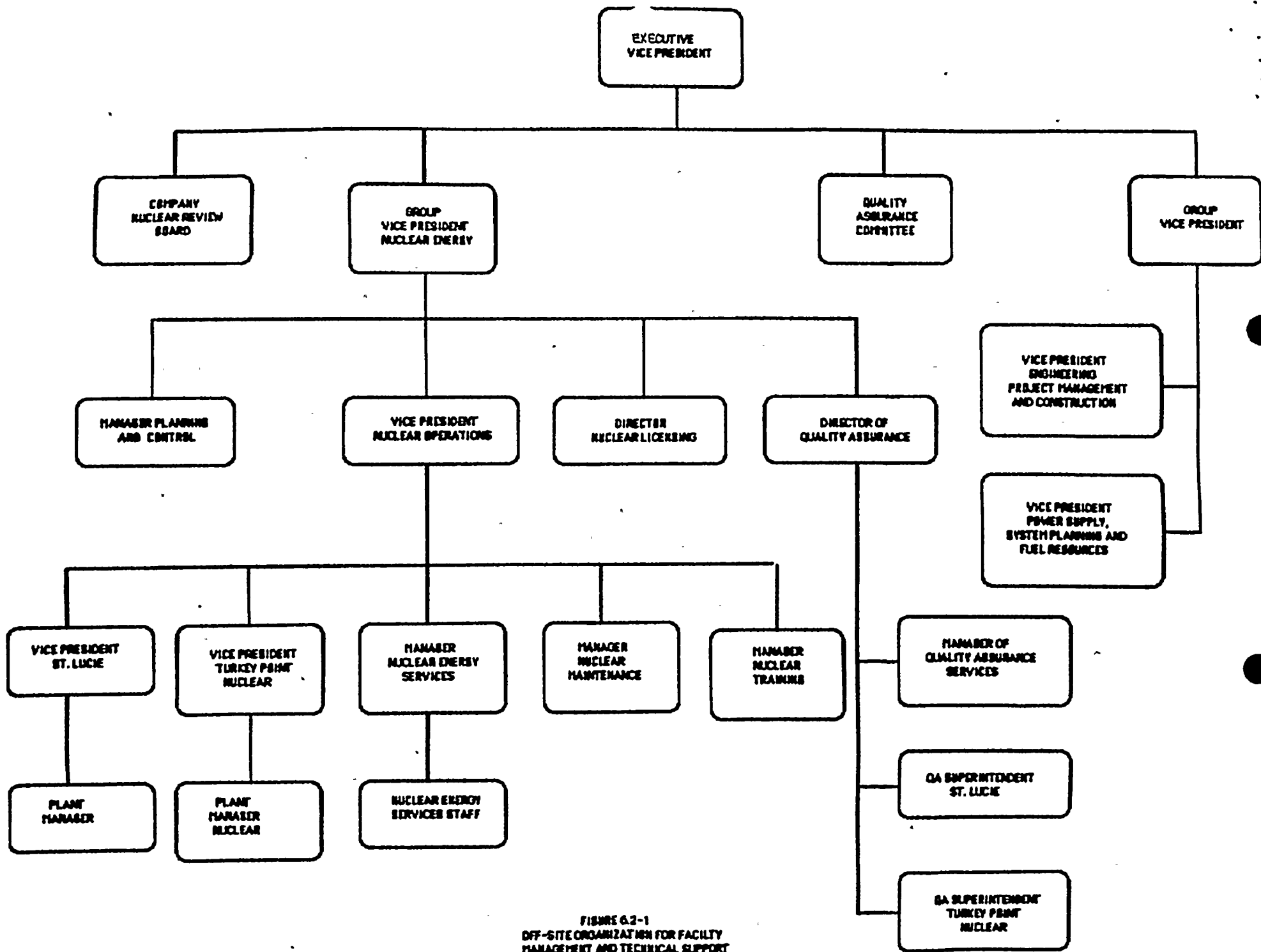
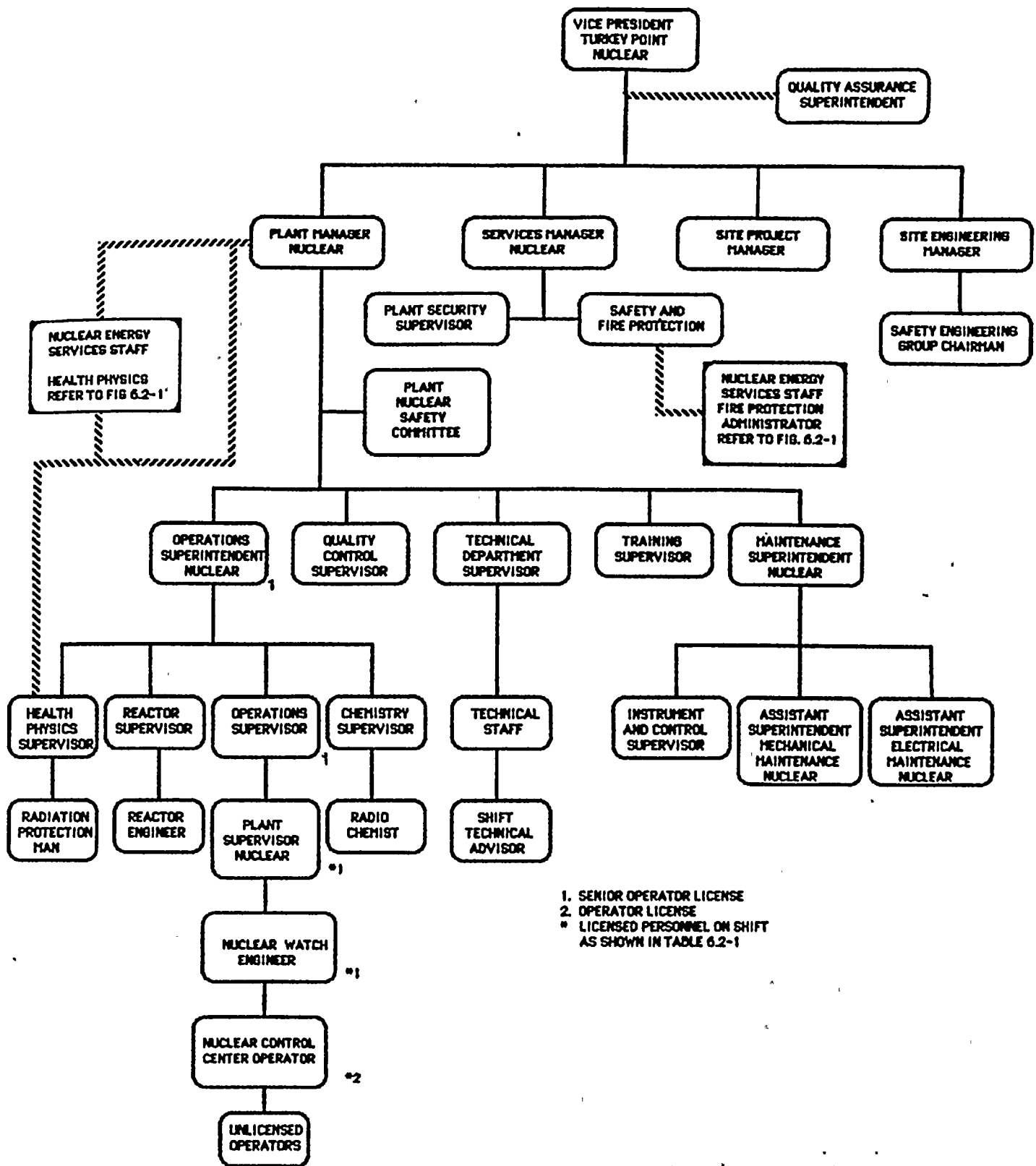


FIGURE G2-1
OFF-SITE ORGANIZATION FOR FACILITY
MANAGEMENT AND TECHNICAL SUPPORT



PLANT ORGANIZATION CHART
FIGURE 6.2-2

6.5.1.8 RECORDS

The Plant Nuclear Safety Committee shall maintain written minutes of each meeting and copies shall be provided to the Vice President - Nuclear Operations and Chairman of the Company Nuclear Review Board.

6.5.2 COMPANY NUCLEAR REVIEW BOARD (CNRB)

6.5.2.1 FUNCTION

The Company Nuclear Review Board shall function to provide independent review and audit of designated activities in the areas of:

- a. Nuclear power plant operations.
- b. Nuclear engineering.
- c. Chemistry and radiochemistry.
- d. Metallurgy.
- e. Instrumentation and control.
- f. Radiological safety.
- g. Mechanical and electrical engineering.
- h. Quality assurance practices.

6.5.2.2 COMPOSITION

The CNRB shall be composed of the following members:

1. Chairman: Group Vice President - Nuclear Energy
2. Member: Vice President - Nuclear Operations
3. Member: Vice President - Engineering, Project Management, and Construction
4. Member: Chief Engineer - Power Plant Engineering
5. Member: Director - Nuclear Licensing
6. Member: Director - Quality Assurance
7. Member: Manager - Nuclear Energy Services
8. Member: Manager - Nuclear Fuels
9. Member: Senior Project Manager - Power Plant Engineering
10. Member: Group Vice President

- g. With untreated gaseous effluents exceeding the limits of 3.9.2.e pursuant to Specification 3.9.2.e.2, submit a report which includes the following information:
- (1) Identification of the inoperable equipment or subsystems and the reason for inoperability,
 - (2) Action(s) taken to restore the inoperable equipment to OPERABLE status, and
 - (3) Summary description of action(s) taken to prevent a recurrence.
- h. With the annual (calendar year) dose or dose commitment to any MEMBER OF THE PUBLIC from all uranium fuel cycle sources exceeding the limits of Technical Specification 3.9.2.h, submit a report that defines the corrective action to be taken to reduce subsequent releases to prevent recurrence of exceeding the limits of Specification 3.9.2.h and includes the schedule for achieving conformance with those limits. This report, as defined in 10 CFR Part 20.405c, shall include an analysis that estimates the radiation exposure (dose) to a MEMBER OF THE PUBLIC from uranium fuel cycle sources, including all effluent pathways and direct radiation, for the calendar year that includes the release(s) covered by this report. It shall also describe levels of radiation and concentrations of radioactive material involved, and the cause of the exposure levels or concentrations. If the estimated dose(s) exceeds the limits of Specification 3.9.2.h and if the release condition resulting in violation of 40 CFR Part 190 has not already been corrected, the report shall include a request for a variance in accordance with the provisions of 40 CFR Part 190. Submittal of the report is considered a timely request, and a variance is granted until staff action on the request is complete.
- i. With the measured levels of radioactivity in environmental samples as a result of plant effluents pursuant to Specification 4.12.1.b, submit a report that identifies the cause(s) for exceeding the limit(s) and defines the corrective actions to be taken to reduce radioactive effluents so that the potential dose to a MEMBER OF THE PUBLIC is less than the limits of Specifications 3.9.1.b, 3.9.2.b and 3.9.2.c.
- j. Whenever the results of steam generator tube inspections fall into Category C-3 of Table 4.2-3, a Special Report shall be submitted within 30 days and prior to resumption of plant operation. This report shall provide a description of investigations conducted to determine cause of the tube degradation and corrective measures taken to prevent recurrence. Reference T.S. 4.2.5.5.c.

The Radioactive Effluent Release Report shall also include an assessment of the radiation doses from radioactive liquid and gaseous effluents to MEMBERS OF THE PUBLIC due to their activities inside the SITE BOUNDARY (Figure 5.1-1) during the report period. All assumptions used in making these assessments, i.e., specific activity, exposure time and location, shall be included in these reports. The meteorological conditions concurrent with the time of release of radioactive materials in gaseous effluents, and determined by sampling frequency and measurement, shall be used for determining the gaseous pathway doses. Approximate and conservative approximate methods may be used in lieu of actual meteorological measurements. The assessment of radiation doses shall be performed in accordance with the methodology and parameters in the OFFSITE DOSE CALCULATION MANUAL (ODCM).

The Radioactive Effluent Release Report to be submitted 60 days after January 1 of each year shall also include an assessment of radiation doses to the likely most exposed MEMBER OF THE PUBLIC from reactor releases for the previous calendar year. Acceptable methods for calculating the dose contribution from liquid and gaseous effluents are given in Regulatory Guide 1.109, March 1976.

The Radioactive Effluent Release Report shall also include the results of specific activity analysis in which the primary coolant exceeded the limits of Specification 3.1.4.2.a. The following information shall be included: 1) Reactor power history starting 48 hours prior to the first sample in which the limit was exceeded, 2) Fuel burnup by core region, 3) Clean-up flow history starting 48 hours prior to the first sample in which the limit was exceeded, 4) History of de-gassing operations, if any, starting 48 hours prior to the first sample in which the limit was exceeded, and 5) The time duration when the specific activity of the primary coolant exceeded 1.0 microcurie per gram DOSE EQUIVALENT I-131.

The Radioactive Effluent Release Reports shall include the following information for each class of solid waste (as defined by 10 CFR Part 61) shipped offsite during the report period:

- a. Volume,
- b. Total curie quantity (specific whether determined by measurement or estimate),
- c. Principal radionuclides (specify whether determined by measurement or estimate),
- d. Type of waste (e.g., dewatered spent resin, compacted dry waste, evaporator bottoms),
- e. Type of container (e.g., LSA, Type A, Type B, Large Quantity), and
- f. Solidification agent or absorbent (e.g., cement, urea formaldehyde).

The Radioactive Effluent Release Reports shall include a list and description of unplanned releases from the site to UNRESTRICTED AREAS of radioactive materials in gaseous and liquid effluents made during the reporting period.

The Radioactive Effluent Release Reports shall include any changes made during the reporting period to the OFFSITE DOSE CALCULATION MANUAL (ODCM) and the PROCESS CONTROL PROGRAM (PCP) as well as a listing of new locations for dose calculations and/or environmental monitoring:

- a. Necessitated by the unavailability of environmental samples, pursuant to Specification 4.12.1.c; report shall also include the causes for unavailability of samples
- b. Identified by the land use census pursuant to Specification 4.12.2.

6.9.4.b ANNUAL RADIOLOGICAL ENVIRONMENTAL OPERATING REPORT*

Routine Radiological Environmental Operating Reports covering the operation of the unit during the previous calendar year shall be submitted prior to May 1 of each year.

The Annual Radiological Environmental Operating Reports shall include summaries, interpretations, and information based on trend analysis of the results of the radiological environmental surveillance activities for the report period, including a comparison, as appropriate, with preoperational studies, with operational controls and with previous environmental surveillance reports and an assessment of the observed impact of the plant operation on the environment. The reports shall also include the results of land use censuses required by Specification 4.12.2.

The Annual Radiological Environmental Operating Reports shall include the results of analyses of all radiological environmental samples and of all environmental radiation measurements taken during the period pursuant to the locations specified in the Table and Figures in the ODCM, as well as summarized and tabulated results of these analyses and measurements in the format of the table in the Radiological Assessment Branch Technical Position, Revision 1, November 1979. In the event that some individual results are not available for inclusion with the report, the report shall be submitted noting and explaining the reasons for the missing results. The missing data shall be submitted as soon as possible in a supplementary report.

* A single submittal may be made for a multiple unit station.

The reports shall also include the following: a summary description of the radiological environmental monitoring program; at least two legible maps** covering all sampling locations keyed to a table giving distances and directions from the centerline of the plant vent stack; the results of the Interlaboratory Comparison Program required by Specification 4.12.3; discussion of all deviations from the sampling schedule of Table 4.12-1, and discussion of all analyses in which the LLD required by Table 4.12-3 was not achievable.

6.10 RECORD RETENTION

6.10.1 The following records shall be retained for at least five (5) years:

- a. Records and logs of facility operation covering time interval at each power level.
- b. Records and logs of principal maintenance activities, inspections, repair and replacement of principal items of equipment related to nuclear safety.
- c. All REPORTABLE EVENTS.
- d. Records of surveillance activities, inspections and calibrations required by these Technical Specifications.
- e. Records of reactor tests and experiments.
- f. Records of changes made to Operating Procedures.
- g. Records of radioactive shipments.
- h. Records of sealed source leak tests and results.
- i. Records of annual physical inventory verifying accountability of sources on record.

** One map shall cover stations near the SITE BOUNDARY; a second shall include the more distant stations.

