

REGULATORY INFORMATION DISTRIBUTION SYSTEM (RIDS)

ACCESSION NBR: 8012300320 DOC. DATE: 80/12/23 NOTARIZED: NO DOCKET #  
 FACIL: 50-250 Turkey Point Plant, Unit 3, Florida Power and Light C' 05000250  
 50-251 Turkey Point Plant, Unit 4, Florida Power and Light C 05000251  
 AUTH. NAME AUTHOR AFFILIATION  
 UHRIG, R.E. Florida Power & Light Co.  
 RECIP. NAME RECIPIENT AFFILIATION  
 EISENHUT, D.G. Division of Licensing

SUBJECT: Application to amend Licenses DPR-31 & DPR 41 authorizing proposed changes to Tech Specs per TMI Lessons Learned.

DISTRIBUTION CODE: A001S COPIES RECEIVED: LTR 3 ENCL 3 SIZE: 4+12  
 TITLE: General Distribution for after Issuance of Operating License

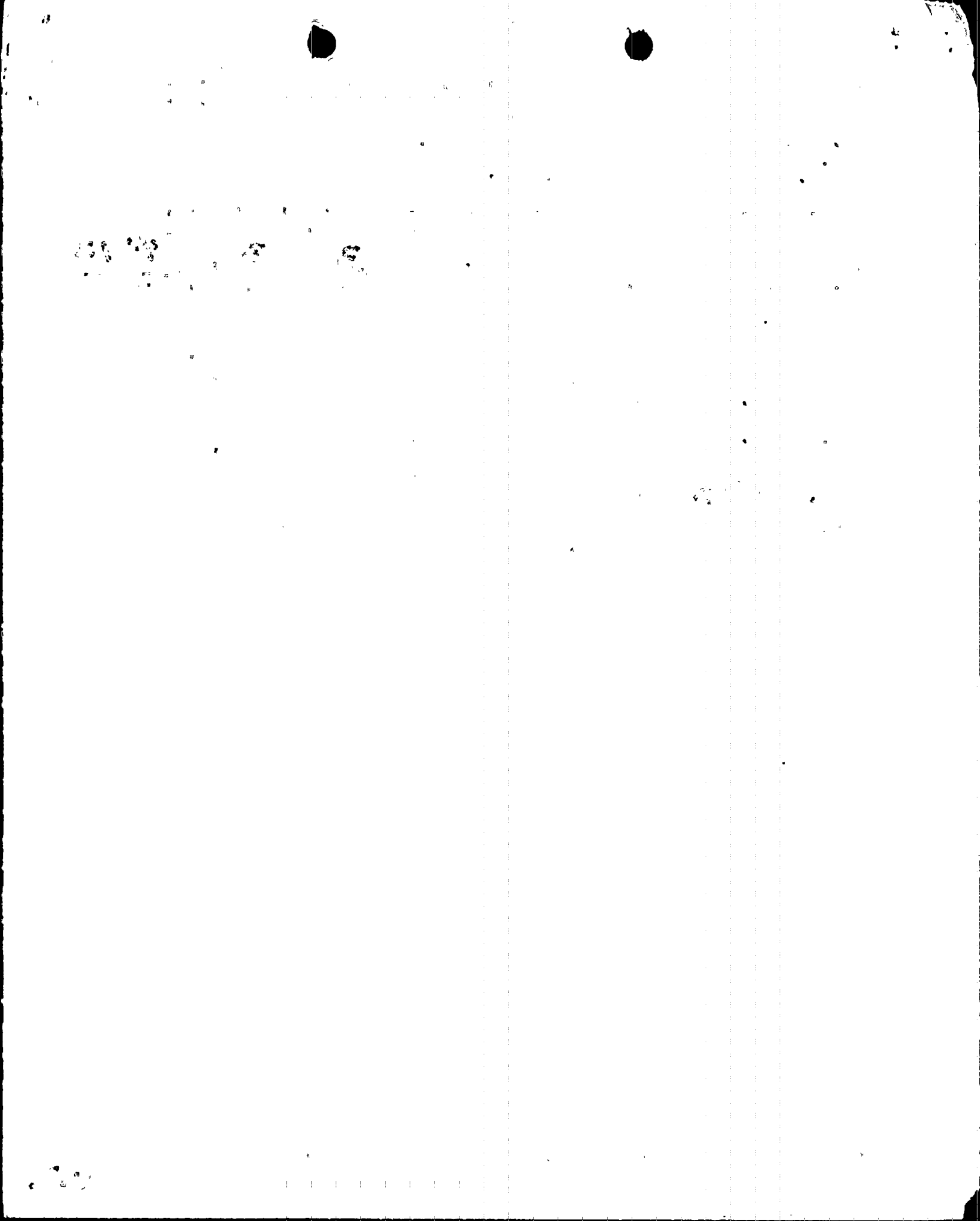
NOTES:

ACTION:	RECIPIENT ID CODE/NAME		COPIES		RECIPIENT ID CODE/NAME	COPIES	
			LTR	ENCL		LTR	ENCL
	VARGA, S.	04	13	13			
INTERNAL:	D/DIR, HUM FAC08		1	1	DIR, DIV OF LIC	1	1
	I&E	06	2	2	NRC PDR 02	1	1
	OELD	11	1	0	OR ASSESS BR 10	1	0
	<u>REG. FILE</u>	01	1	1			
EXTERNAL:	ACRS	09	16	16	LPDR	03	1
	NSIC	05	1	1			

JAN 5 1981

TOTAL NUMBER OF COPIES REQUIRED: LTR 39 ENCL 37

L.S.





December 23, 1980  
L-80-417

Director of Nuclear Reactor Regulation  
Attention: Mr. Darrell G. Eisenhut, Director  
Division of Licensing  
U. S. Nuclear Regulatory Commission  
Washington, D. C. 20555

Dear Mr. Eisenhut:

RE: Turkey Point Units 3 & 4  
Docket Nos 50-250 & 50-251  
Proposed Amendment to  
Facility Operating Licenses DPR-31 & DPR-41

In accordance with 10 CFR 50.30, Florida Power & Light Company submits herewith three (3) signed originals and forty (40) copies of a request to amend Appendix A of Facility Operating Licenses DPR-31 and DPR-41.

This proposal is submitted in response to your letter of July 2, 1980. The license condition changes from Enclosure 2 of that letter have not been included in this proposal. These items will be forwarded as a separate request. The proposed changes are shown on the accompanying Technical Specification pages bearing the date of this letter in the lower right hand corner.

The proposed amendment has been approved by the Turkey Point Plant Nuclear Safety Committee and the Florida Power & Light Company Nuclear Review Board.

Very truly yours,

Robert E. Uhrig  
Vice President  
Advanced Systems & Technology

REU/MAS/ras

Attachment

cc: Mr. James P. O'Reilly, Region II  
Harold F. Reis, Esquire

US NRC  
DISTRIBUTION SERVICES  
BRANCH

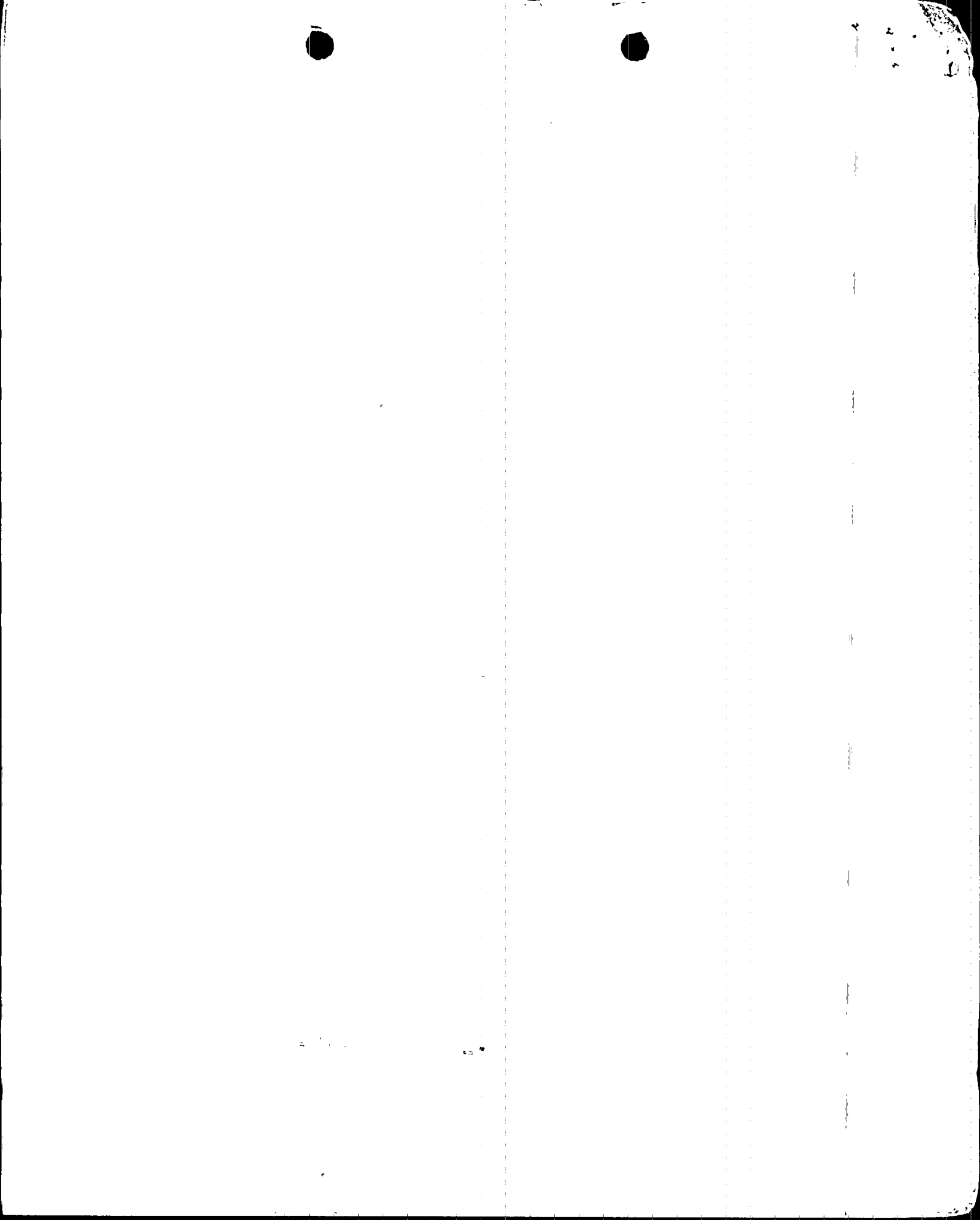
A001  
s  
3/3

1980 DEC 29 PM 1 56

DISTRIBUTION SERVICES UNIT

8012300320

P



ATTACHMENT

RE: Turkey Point Units 3 & 4  
Proposed Tech Spec Change  
TMI Lessons Learned

Page 3.1-1a

Specification 3.1.1 is expanded to include the pressurizer, the PORVs, and associated block valves.

Page 3.2-4

The requirement for a monthly flux map is moved to Chapter 4, Surveillance Requirements (Table 4.1-1).

Page 3.3-1

Containment Isolation Valves are added to Specification 3.3.

Pages 3.5-1 and Tables 3.5-2, 3.5-4, & 3.5-5

Additional accident monitoring instrumentation is added to Specification 3.5 and the Tables for ESF Actuation and ESF Setpoints. Table 3.5-5 is a new Table.

Table 4.1-1 (Sheets 1, 3 and 4)

Testing requirements for certain AUXILIARY FEEDWATER INSTRUMENTATION and ACCIDENT MONITORING INSTRUMENTATION are added to this Table (Minimum Frequencies for Checks, Calibrations, and Test of Instrument Channels). This requirement for a monthly flux map is also added to this Table.

Page 4.10-1

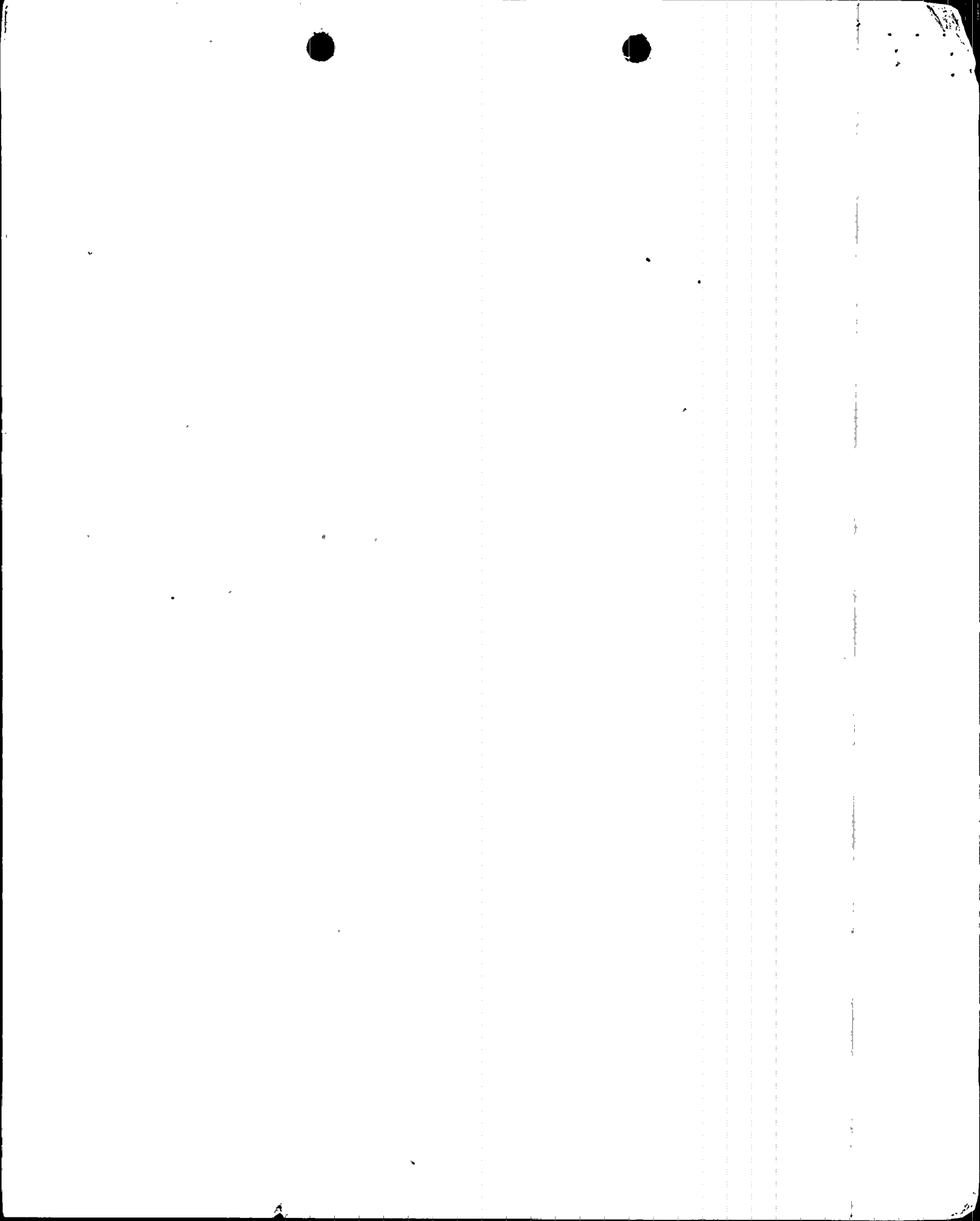
Specification 4.10 is expanded to include 18 month testing requirements for the Auxiliary Feedwater System.

Table 6.2-1

Shift manning requirements are modified and include the Shift Technical Advisor.

Page 6-5

Minimum qualifications for the Shift Technical Advisor are added to Specification 6.3.1.

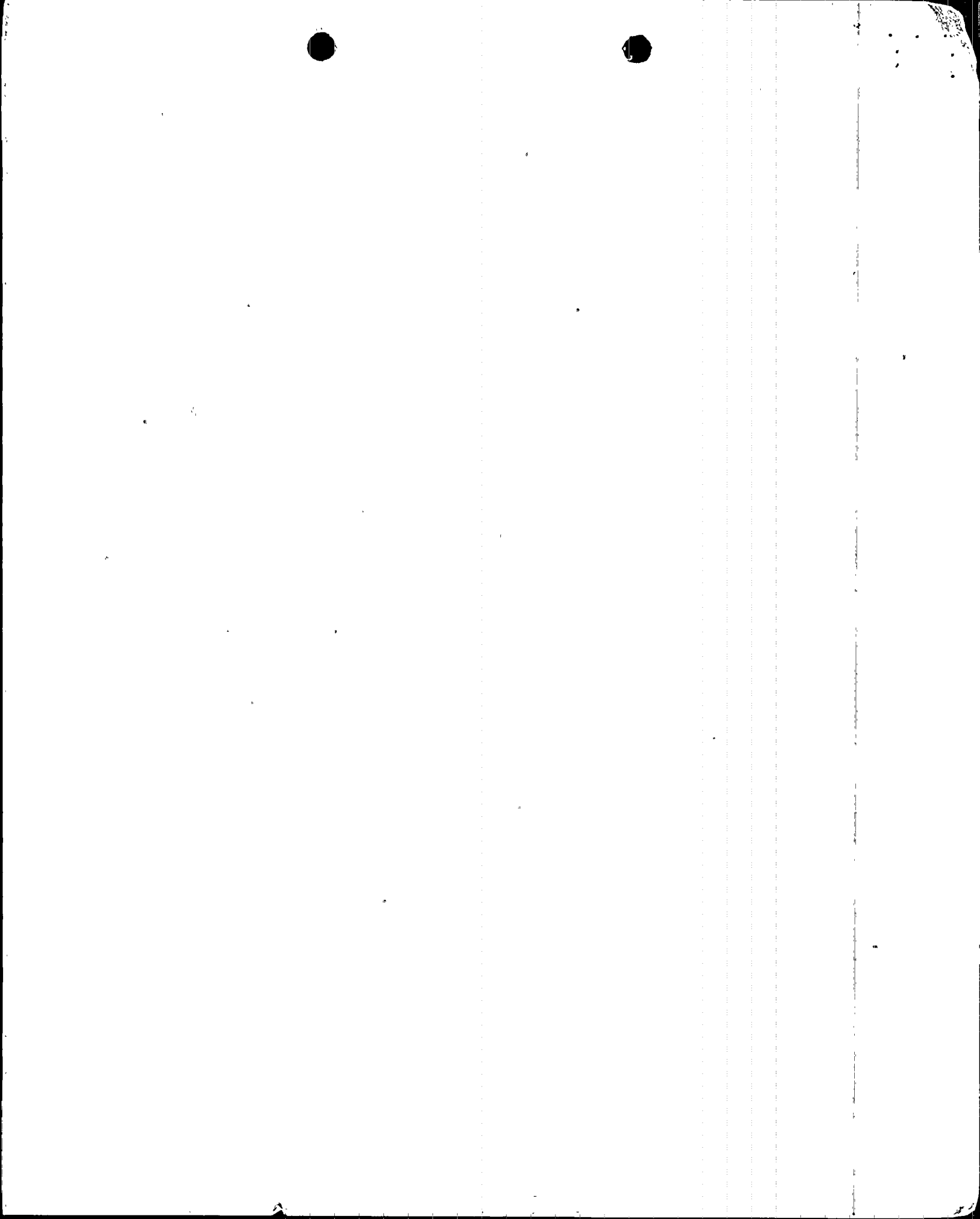


## Pressurizer

The pressurizer shall be operable with a steam bubble, and with at least 125 KW of pressurizer heaters capable of being supplied by emergency power, when the reactor coolant is heated above 350F.

### e. Relief Valves

1. A power operated relief valve (PORV) and its associated block valve shall be operable when the reactor coolant is heated above 350F.
2. If the average coolant temperature is greater than 350F and the conditions of 3.1.1.e.1 cannot be met because one or more PORV(s) is inoperable, within 1 hour either restore the PORV(s) to operable status or close the associated block valve(s) and remove power from the block valve(s); otherwise, be in a condition with  $K_{eff} < 0.99$  within the next 6 hours and in cold shutdown within the following 30 hours.
3. If the average coolant temperature is greater than 350F and the conditions of 3.1.1.e.1 cannot be met because one or more block valve(s) is inoperable, within 1 hour either restore the block valve(s) to operable status or close the block valve(s) and remove power from the block valve(s); otherwise, be in a condition with  $K_{eff} < 0.99$  within the next 6 hours and in cold shutdown within the following 30 hours.





- (b) (1) The measurement of total peaking factor,  $F^{Meas}$ , shall be increased by three percent to account for  $Q$  manufacturing tolerances and further increased by five percent to account for measurement error.
- (2) The measurement of the enthalpy rise hot channel factor,  $F_{H}^N$ , shall be increased by four percent to account for measurement error.

If the measured hot channel factor exceeds its limit specified under Item 7a, the reactor power shall be reduced so as not to exceed a fraction of the rated value equal to the ratio of the  $F_Q$  or  $F_{H}^N$  limit to measured value, whichever is less, and the high neutron flux trip setpoint shall be reduced by the same ratio. If subsequent incore mapping cannot, within a 24 hour period, demonstrate that the hot channel factors are met, the reactor shall be brought to a hot shutdown condition with return to power authorized only for the purpose of physics testing. The reactor may be returned to higher power levels when measurements indicate that hot channel factors are within limits.

- c. The reference equilibrium indicated axial flux difference as a function of power level (called the target flux difference) shall be measured at least once per effective full power quarter. If the axial flux difference has not been measured in the last effective full power month, the target flux difference must be updated monthly by linear interpolation using the most recent measured value and the value predicted for the end of the cycle life.
- d. Except during physics tests or during excore calibration procedures and as modified by items 6e through 6g below, the indicated axial flux difference shall be maintained with a  $\pm 5\%$  band about the target flux difference (this defines the target band on axial flux difference).
- e. If the indicated axial flux difference at a power level greater than 90% of rated power deviates

