

# CATEGORY 1

## REGULATORY INFORMATION DISTRIBUTION SYSTEM (RIDS)

ACCESSION NBR: 9803190400      DOC. DATE: 98/02/28      NOTARIZED: NO      DOCKET #  
 FACIL: 50-315 Donald C. Cook Nuclear Power Plant, Unit 1, Indiana M 05000315  
 AUTH. NAME                      AUTHOR AFFILIATION  
 CENTER, J.F.                    Indiana Michigan Power Co.  
 MINOR, J.W.                    Indiana Michigan Power Co.  
 COOPER, D.E.                   Indiana Michigan Power Co.  
 RECIP. NAME                    RECIPIENT AFFILIATION

SUBJECT: Monthly operating rept for Feb 1998 for Donald C Cook  
 Nuclear Plant, Unit 1. W/980309 ltr.

DISTRIBUTION CODE: IE24D      COPIES RECEIVED: LTR 1 ENCL 1 SIZE: 5  
 TITLE: Monthly Operating Report (per Tech Specs)

### NOTES:

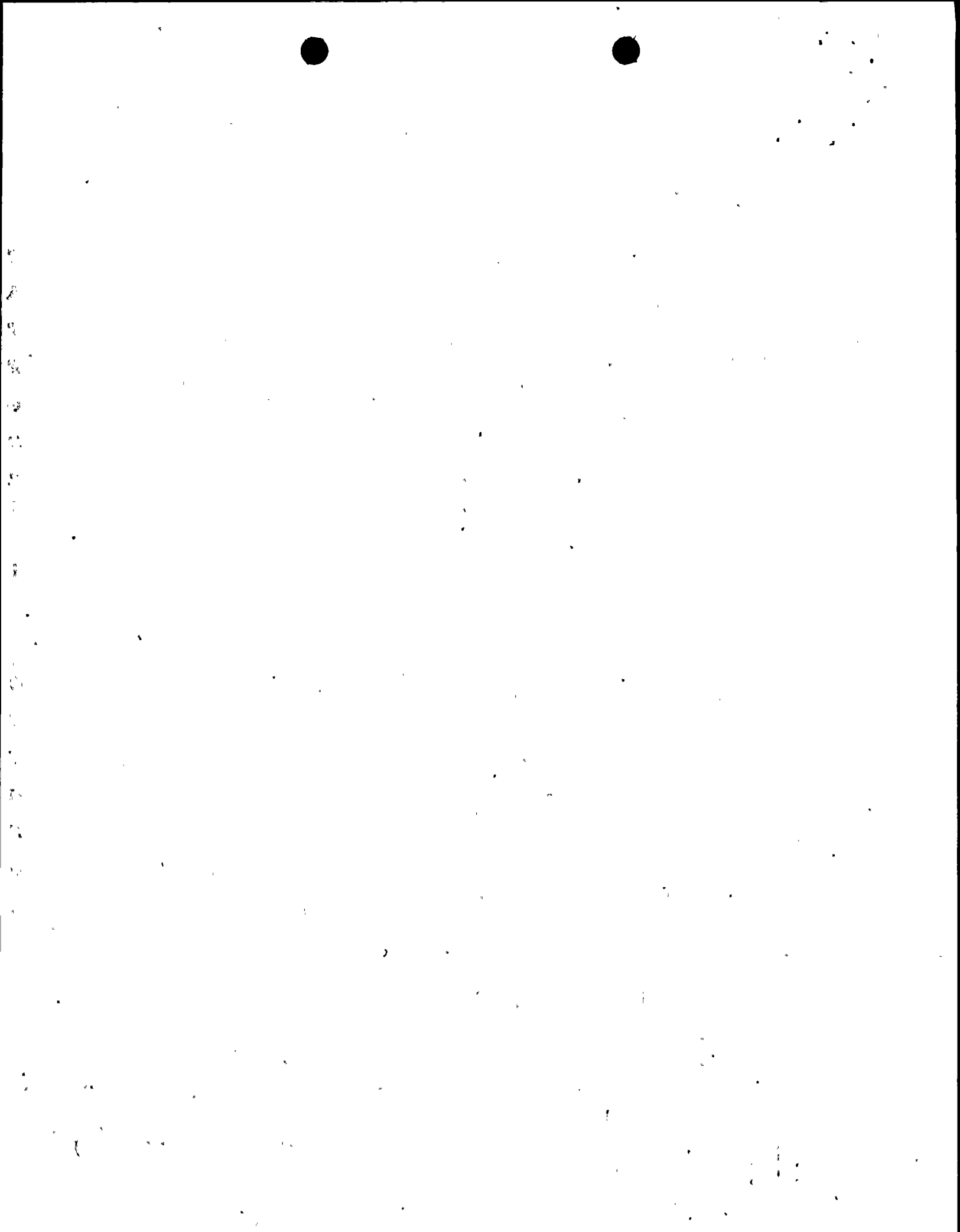
	RECIPIENT		COPIES		RECIPIENT		COPIES	
	ID	CODE/NAME	LTR	ENCL	ID	CODE/NAME	LTR	ENCL
	PD3-3	PD	1	1	STANG, J		1	1
INTERNAL:	AEOD/SPD/RRAB		1	1	<u>FILE CENTER</u> 01		1	1
	OC/DBA/PAD		1	1	RG3		1	1
EXTERNAL:	LITCO BRYCE, J H		1	1	NOAC		1	1
	NRC PDR		1	1				

NOTE TO ALL "RIDS" RECIPIENTS:  
 PLEASE HELP US TO REDUCE WASTE. TO HAVE YOUR NAME OR ORGANIZATION REMOVED FROM DISTRIBUTION LISTS  
 OR REDUCE THE NUMBER OF COPIES RECEIVED BY YOU OR YOUR ORGANIZATION, CONTACT THE DOCUMENT CONTROL  
 DESK (DCD) ON EXTENSION 415-2083

TOTAL NUMBER OF COPIES REQUIRED: LTR 9 ENCL 9

C  
A  
T  
E  
G  
O  
R  
Y  
1  
D  
O  
C  
U  
M  
E  
N  
T

*Jh*



Indiana Michigan  
Power Company  
Cook Nuclear Plant  
One Cook Place  
Bridgman, MI 49106



U.S. Nuclear Regulatory Commission  
ATTN: Document Control Desk  
Washington, D.C. 20555

March 9, 1998

Gentlemen,

Pursuant to the requirements of Donald C. Cook Nuclear Plant Unit 1  
Technical Specification 6.9.1.10, the attached Monthly Operating Report  
for the month of February 1998 is submitted.

Sincerely,

D.E. Cooper  
Plant Manager

/jc

Attachment

c: NRC Region III  
D.R. Hahn  
R.C. Callen  
S. Hamming  
B. Lewis  
INPO Records Center  
ANI Nuclear Engineering Department  
E.E. Fitzpatrick  
A.A. Blind  
P.A. Barrett  
S.J. Brewer  
D.W. Paul  
D.L. Noble  
W.H. Schalk  
D.G. Turner  
B.L. Bartlett

1500.23

IR241

9803190400 980228  
PDR ADOCK 05000315  
R PDR



# N.R.C. OPERATING DATA REPORT

DOCKET NO.	50 - 315
DATE	March 6, 1998
COMPLETED BY	JW Minor
TELEPHONE	616-465-5901

**OPERATING STATUS**

1. Unit Name	D. C. Cook Unit 1
2. Reporting Period	Feb-98
3. Licensed Thermal Power (MWt)	3250
4. Name Plate Rating (Gross MWe)	1152
5. Design Electrical Rating (Net MWe)	1020
6. Maximum Dependable Capacity (GROSS MWe)	1056
7. Maximum Dependable Capacity (Net MWe)	1000

Notes:

8. If Changes Occur in Capacity Ratings (Items no. 3 through 7) Since Last Report Give Reasons:

9. Power Level To Which Restricted, If Any (Net Mwe):

10. Reasons For Restrictions, If Any:

	This Month	Year-to-Date	Cumulative
11. Hours in Reporting Period	672.0	1416.0	203040.0
12. No. of Hrs. Reactor Was Critical	0.0	0.0	151285.3
13. Reactor Reserve Shutdown Hours	0.0	0.0	463.0
14. Hours Generator on Line	0.0	0.0	148821.1
15. Unit Reserve Shutdown Hours	0.0	0.0	321.0
16. Gross Thermal Energy Gen. (MWH)	0.0	0.0	440194814.0
17. Gross Electrical Energy Gen. (MWH)	0.0	0.0	143013940.0
18. Net Electrical Energy Gen. (MWH)	0.0	0.0	137597640.0
19. Unit Service Factor	0.0	0.0	74.1
20. Unit Availability Factor	0.0	0.0	74.1
21. Unit Capacity Factor (MDC Net)	0.0	0.0	67.6
22. Unit Capacity Factor (DER Net)	0.0	0.0	65.9
23. Unit Forced Outage Rate	100.0	100.0	8.2

24. Shutdowns Scheduled over Next Six Months (Type, Date, and Duration):  
None

25. If Shut Down At End of Report Period, Estimated Date of Startup:  
To be Determined.

26. Units in Test Status (Prior to Commercial Operation):

	Forecast	Achieved
INITIAL CRITICALITY		
INITIAL ELECTRICITY		
COMMERCIAL OPERATION		

DOCKET NO.  
UNIT NAME  
DATE  
COMPLETED BY  
TELEPHONE

50 - 315  
D.C. Cook Unit 1  
March 6, 1998  
JW Minor  
616-465-5901

**AVERAGE DAILY POWER LEVEL (MWe-Net)**

**February 1998**

DAY	AVERAGE DAILY POWER LEVEL	DAY	AVERAGE DAILY POWER LEVEL
2/1/98	0	2/17/98	0
2/2/98	0	2/18/98	0
2/3/98	0	2/19/98	0
2/4/98	0	2/20/98	0
2/5/98	0	2/21/98	0
2/6/98	0	2/22/98	0
2/7/98	0	2/23/98	0
2/8/98	0	2/24/98	0
2/9/98	0	2/25/98	0
2/10/98	0	2/26/98	0
2/11/98	0	2/27/98	0
2/12/98	0	2/28/98	0
2/13/98	0		0
2/14/98	0		0
2/15/98	0		0
2/16/98	0		0

DOCKET NO.  
UNIT NAME  
DATE  
COMPLETED BY  
TELEPHONE  
PAGE

50 - 315  
D.C. Cook Unit 1  
March 6, 1998  
JF Center  
616-697-5098  
1 of 1

## MONTHLY OPERATING ACTIVITIES - February 1998

### HIGHLIGHTS

The unit entered this reporting period in Mode 5 at 0% RTP.

The unit exited this reporting period in Mode 5 at 0% RTP.

There were no challenges to the pressurizer safety valves or power operated relief valves.

Gross electrical generation for the month of February was 0 MWh.

### DETAILS

10/01/97

The Reactor was shutdown 09/08/97 to resolve design basis questions discovered during the NRC Architect and Engineering (AE) Inspection.

DOCKET NO. 50 - 315  
 UNIT NAME D.C. Cook Unit 1  
 DATE March 6, 1998  
 COMPLETED BY JF Center  
 TELEPHONE 616-697-5098  
 PAGE 1 of 1

**UNIT SHUTDOWNS AND POWER REDUCTIONS - February 1998**

NO.	DATE	TYPE <sup>1</sup>	DURATION HOURS	REASON <sup>2</sup>	METHOD OF SHUTTING DOWN REACTOR <sup>3</sup>	LICENSEE EVENT REPORT NO.	SYSTEM CODE <sup>4</sup>	COMPONENT CODE <sup>5</sup>	CAUSE AND CORRECTIVE ACTION TO PREVENT RECURRENCE
333	090897	F	744.0	F	2	97-010 97-011 97-012 97-013 97-014 97-016	N/A N/A N/A N/A N/A N/A	N/A N/A N/A N/A N/A N/A	The unit was shutdown to resolve design basis questions discovered during the NRC Architect and Engineering (AE) Inspection.

**1 TYPE:**  
 F: Forced  
 S: Scheduled

**2 REASON:**  
 A: Equipment Failure (Explain)  
 B: Maintenance or Test  
 C: Refueling  
 D: Regulatory Restriction  
 E: Operator Training and License Examination  
 F: Administrative  
 G: Operational Error (Explain)  
 H: Other (Explain)

**3 METHOD:**  
 1: Manual  
 2: Manual Scram  
 3: Automatic Scram  
 4: Other (Explain)

**4 SYSTEM:**  
 Exhibit G - Instructions  
 for preparation of data  
 entry sheets for Licensee  
 Event Report (LER) File  
 (NUREG 0161)

**5 COMPONENT:**  
 Exhibit I: Same Source

50-315  
3/13/2000

Distri73.txt

Distribution Sheet

Priority: Normal

From: Esperanza Lomosbog

<b>Action Recipients:</b>	<b>Copies:</b>
J Stang	1 Paper Copy

<b>Internal Recipients:</b>	
RidsRgn3MailCenter	0 OK
RidsResDraaOerab	0 OK
RidsOcfoDpbaPab	0 OK
RidsManager	0 OK
RidsAcrcAcnwMailCenter	0 OK
RGN3	1 Paper Copy
RES/DRAA/OERAB	1 Paper Copy
OCFO/DPBA	1 Paper Copy
<u>FILE CENTER 01</u>	1 Paper Copy
ACRS	1 Paper Copy

<b>External Recipients:</b>	
NOAC	1 Paper Copy
INEEL Marshall	1 Paper Copy

-----  
**Total Copies:** 8

**Item:** ADAMS Document  
**Library:** ML\_ADAMS^HQNTAD01  
**ID:** 003694646:1

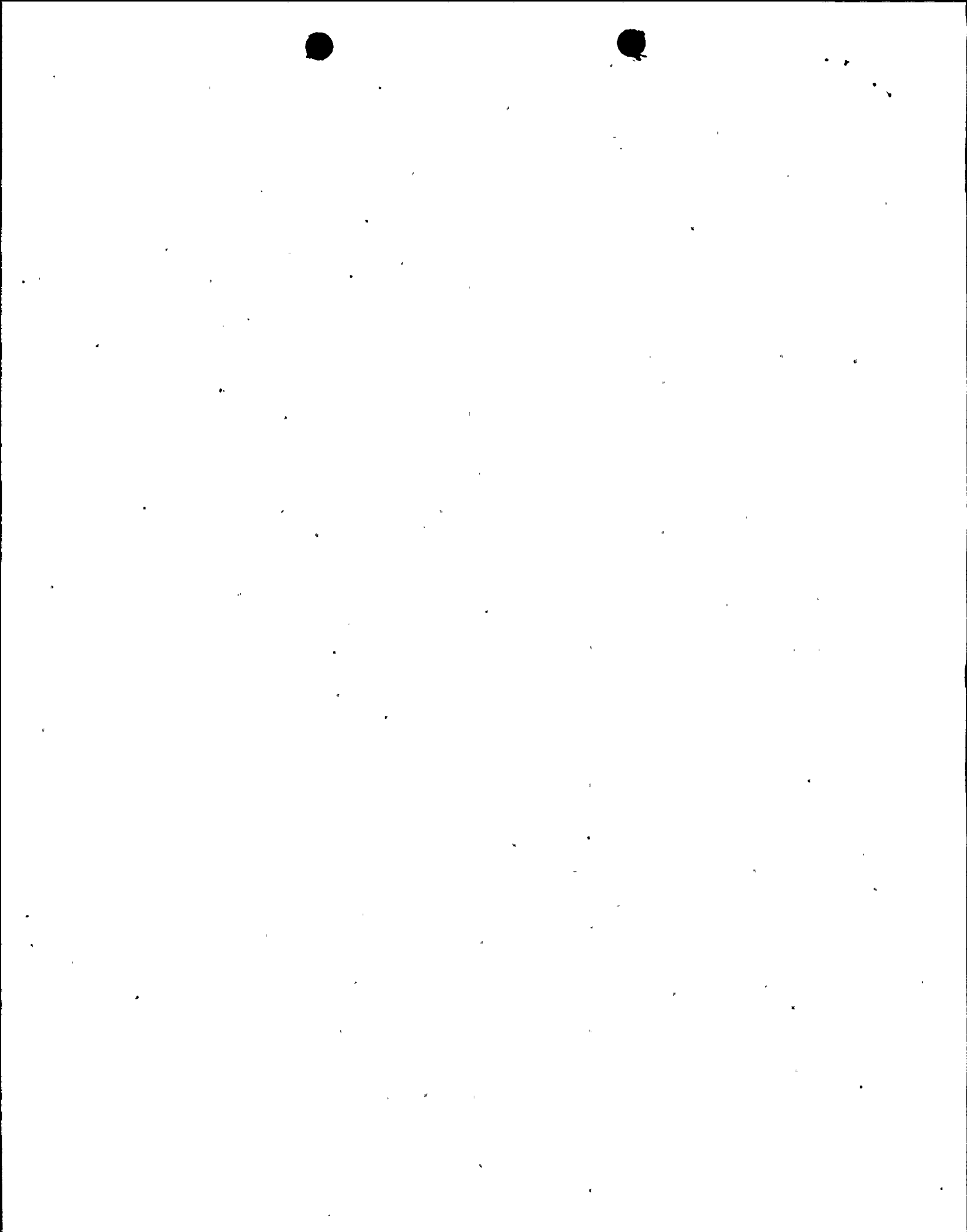
**Subject:**  
D. C. Cook Nuclear Plant, Unit 1, Monthly Operating Report for February 2000

**Body:**  
ADAMS DISTRIBUTION NOTIFICATION.

Electronic Recipients can RIGHT CLICK and OPEN the first Attachment to View the Document in ADAMS. The Document may also be viewed by searching for Accession Number ML003694646.

MR





Distri73.txt

IE24 - Monthly Operating Report (per Tech Specs)

Docket: 05000315



March 13, 2000

United States Nuclear Regulatory Commission  
Document Control Desk  
Washington, DC 20555

Document Control Manager:

Pursuant to the requirements of Donald C. Cook Nuclear Plant Unit 1 Technical Specification 6.9.1.8, the attached Monthly Operating Report for February 2000 is submitted.

Sincerely,

A handwritten signature in black ink, appearing to read 'Robert C. Godley', is written over the typed name.

R. C. Godley  
Regulatory Affairs Director

RCG/mbd

Attachments

c: ANI Nuclear Engineering Department  
A. C. Bakken, III  
G. T. Gaffney - Canton  
D. R. Hahn - Department of Health  
S. Hamming - Department of Labor  
RAF Harris  
INPO Records Center  
G. John  
B. Lewis - McGraw-Hill Companies  
D. H. Malin  
NRC Project Manager - NRR  
NRC Region III  
NRC Resident Inspector  
T. P. Noonan  
D. W. Paul - Lancaster  
J. E. Pollock  
R. P. Powers  
Regulatory Licensing Manager  
M. W. Rencheck  
W. H. Schalk

003694646

IE24

# NRC OPERATING DATA REPORT

DOCKET NO. 50 - 315  
 DATE March 6, 2000  
 COMPLETED BY J. W. Minor  
 TELEPHONE 616-465-5901

**OPERATING STATUS**

1. Unit Name D. C. Cook Unit 1  
 2. Reporting Period Feb-2000  
 3. Licensed Thermal Power (MWt) 3250  
 4. Name Plate Rating (Gross MWe) 1152  
 5. Design Electrical Rating (Net MWe) 1020  
 6. Maximum Dependable Capacity (GROSS MWe) 1056  
 7. Maximum Dependable Capacity (Net MWe) 1000

Notes:

8. If Changes Occur in Capacity Ratings (Items no. 3 through 7) Since Last Report Give Reasons: \_\_\_\_\_

9. Power Level to Which Restricted, If Any (Net MWe): \_\_\_\_\_

10. Reasons For Restrictions, If Any: \_\_\_\_\_

	This Month	Year-to-Date	Cumulative
11. Hours in Reporting Period	696.0	1440.00	220584.0
12. No. of Hrs. Reactor Was Critical	0.0	0.0	151285.3
13. Reactor Reserve Shutdown Hours	0.0	0.0	463.0
14. Hours Generator on Line	0.0	0.0	148821.1
15. Unit Reserve Shutdown Hours	0.0	0.0	321.0
16. Gross Thermal Energy Gen. (MWH)	0.0	0.0	440194814.0
17. Gross Electrical Energy Gen. (MWH)	0.0	0.0	143013940.0
18. Net Electrical Energy Gen. (MWH)	0.0	0.0	137597640.0
19. Unit Service Factor	0.0	0.0	68.0
20. Unit Availability Factor	0.0	0.0	68.0
21. Unit Capacity Factor (MDC Net)	0.0	0.0	62.0
22. Unit Capacity Factor (DER Net)	0.0	0.0	60.5
23. Unit Forced Outage Rate	100.0	100.0	17.3

24. Shutdowns Scheduled over Next Six Months (Type, Date, and Duration): \_\_\_\_\_  
 None

25. If Shut Down At End of Report Period, Estimated Date of Startup: \_\_\_\_\_  
 September 2000

26. Units in Test Status (Prior to Commercial Operation):

	Forecast	Achieved
INITIAL CRITICALITY		
INITIAL ELECTRICITY		
COMMERCIAL OPERATION		

DOCKET NO.  
UNIT NAME  
DATE  
COMPLETED BY  
TELEPHONE

50 - 315  
D.C. Cook Unit 1  
March 6, 2000  
J. W. Minor  
616-465-5901

**AVERAGE DAILY POWER LEVEL (MWe-Net)**

**February 2000**

DAY	AVERAGE DAILY POWER LEVEL	DAY	AVERAGE DAILY POWER LEVEL
2/1/2000	0	2/17/2000	0
2/2/2000	0	2/18/2000	0
2/3/2000	0	2/19/2000	0
2/4/2000	0	2/20/2000	0
2/5/2000	0	2/21/2000	0
2/6/2000	0	2/22/2000	0
2/7/2000	0	2/23/2000	0
2/8/2000	0	2/24/2000	0
2/9/2000	0	2/25/2000	0
2/10/2000	0	2/26/2000	0
2/11/2000	0	2/27/2000	0
2/12/2000	0	2/28/2000	0
2/13/2000	0	2/29/2000	0
2/14/2000	0		
2/15/2000	0		
2/16/2000	0		

DOCKET NO. 50 - 315  
 UNIT NAME D.C. Cook Unit ↑  
 DATE March 5, 2000  
 COMPLETED BY MB Depuydt  
 TELEPHONE 616-465-5901  
 PAGE 1 of 1

UNIT SHUTDOWNS AND POWER REDUCTIONS – February 2000

NO.	DATE	TYPE <sup>1</sup>	DURATION HOURS	REASON <sup>2</sup>	METHOD OF SHUTTING DOWN REACTOR <sup>3</sup>	LICENSEE EVENT REPORT NO.	SYSTEM CODE <sup>4</sup>	COMPONENT CODE <sup>5</sup>	CAUSE AND CORRECTIVE ACTION TO PREVENT RECURRENCE
333	090897	F	696.0	F	2	97-010	N/A	N/A	The unit remained shutdown to resolve design basis questions discovered during the NRC Architect and Engineering (AE) Inspection.
						97-011	N/A	N/A	
						97-012	N/A	N/A	
						97-013	N/A	N/A	
						97-014	N/A	N/A	
						97-016	N/A	N/A	

**1 TYPE:**  
 F: Forced  
 S: Scheduled

**2 REASON:**  
 A: Equipment Failure (Explain)  
 B: Maintenance or Test  
 C: Refueling  
 D: Regulatory Restriction  
 E: Operator Training and License Examination  
 F: Administrative  
 G: Operational Error (Explain)  
 H: Other (Explain)

**3 METHOD:**  
 1: Manual  
 2: Manual Scram  
 3: Automatic Scram  
 4: Other (Explain)

**4 SYSTEM:**  
 Exhibit G - Instructions for preparation of data entry sheets for Licensee Event Report (LER) File (NUREG 0161)

**5 COMPONENT:**  
 Exhibit I: Same Source

50-315  
2/11/2000

Distri66.txt

Distribution Sheet

Priority: Normal

From: Stefanie Fountain

<b>Action Recipients:</b>		<b>Copies:</b>
J Stang	1	Paper Copy
<b>Internal Recipients:</b>		
RidsRgn3MailCenter	0	OK
RidsResDraaOerab	0	OK
RidsManager	0	OK
RidsAcrsAcnwMailCenter	0	OK
RGN3	1	Paper Copy
RES/DRAA/OERAB	1	Paper Copy
OCFO/DPBA	1	Paper Copy
<u>FILE CENTER 01</u>	1	Paper Copy
ACRS	1	Paper Copy
<b>External Recipients:</b>		
NOAC	1	Paper Copy
INEEL Marshall	1	Paper Copy
-----		
<b>Total Copies:</b>	<b>8</b>	

Item: ADAMS Document  
Library: ML\_ADAMS^HQNTAD01  
ID: 003685663:1

Subject:  
Letter forwarding monthly operating report for Donald C. Cook for January 2000.

Body:  
ADAMS DISTRIBUTION NOTIFICATION.

Electronic Recipients can RIGHT CLICK and OPEN the first Attachment to View the Document in ADAMS. The Document may also be viewed by searching for Accession Number ML003685663.

MR





Distri66.txt

IE24 - Monthly Operating Report (per Tech Specs)

Docket: 05000315



February 11, 2000

United States Nuclear Regulatory Commission  
Document Control Desk  
Washington, DC 20555

Document Control Manager:

Pursuant to the requirements of Donald C. Cook Nuclear Plant Unit 1 Technical Specification 6.9.1.8, the attached Monthly Operating Report for January 2000 is submitted.

Sincerely,

A handwritten signature in cursive script that reads 'Robert C. Godley'.

R. C. Godley  
Regulatory Affairs Director

RCG/mbd

Attachments

- c: ANI Nuclear Engineering Department
- A. C. Bakken, III
- G. T. Gaffney – Canton
- D. R. Hahn – Department of Health
- S. Hamming – Department of Labor
- RAF Harris
- INPO Records Center
- G. John
- B. Lewis – McGraw-Hill Companies
- D. H. Malin
- NRC Project Manager – NRR
- NRC Region III
- NRC Resident Inspector
- T. P. Noonan
- D. W. Paul – Lancaster
- J. E. Pollock
- R. P. Powers
- Regulatory Licensing Manager
- M. W. Rencheck
- W. H. Schalk

003685663

IE24

# NRC OPERATING DATA REPORT

DOCKET NO.	50 - 315
DATE	February 4, 2000
COMPLETED BY	J. W. Minor
TELEPHONE	616-465-5901

**OPERATING STATUS**

- |  |                   |
|--|-------------------|
| 1. Unit Name                               | D. C. Cook Unit 1 |
| 2. Reporting Period                        | Jan-2000          |
| 3. Licensed Thermal Power (MWt)            | 3250              |
| 4. Name Plate Rating (Gross MWe)           | 1152              |
| 5. Design Electrical Rating (Net MWe)      | 1020              |
| 6. Maximum Dependable Capacity (GROSS MWe) | 1056              |
| 7. Maximum Dependable Capacity (Net MWe)   | 1000              |

Notes:

8. If Changes Occur in Capacity Ratings (Items no. 3 through 7) Since Last Report Give Reasons: \_\_\_\_\_

9. Power Level to Which Restricted, If Any (Net MWe): \_\_\_\_\_

10. Reasons For Restrictions, If Any: \_\_\_\_\_

	This Month	Year-to-Date	Cumulative
11. Hours in Reporting Period	744.0	744.00	219888.0
12. No. of Hrs. Reactor Was Critical	0.0	0.0	151285.3
13. Reactor Reserve Shutdown Hours	0.0	0.0	463.0
14. Hours Generator on Line	0.0	0.0	148821.1
15. Unit Reserve Shutdown Hours	0.0	0.0	321.0
16. Gross Thermal Energy Gen. (MWH)	0.0	0.0	440194814.0
17. Gross Electrical Energy Gen. (MWH)	0.0	0.0	143013940.0
18. Net Electrical Energy Gen. (MWH)	0.0	0.0	137597640.0
19. Unit Service Factor	0.0	0.0	68.2
20. Unit Availability Factor	0.0	0.0	68.2
21. Unit Capacity Factor (MDC Net)	0.0	0.0	62.2
22. Unit Capacity Factor (DER Net)	0.0	0.0	60.7
23. Unit Forced Outage Rate	100.0	100.0	17.0

24. Shutdowns Scheduled over Next Six Months (Type, Date, and Duration): \_\_\_\_\_  
None

25. If Shut Down At End of Report Period, Estimated Date of Startup: \_\_\_\_\_  
September 2000

26. Units in Test Status (Prior to Commercial Operation):

	Forecast	Achieved
INITIAL CRITICALITY		
INITIAL ELECTRICITY		
COMMERCIAL OPERATION		



DOCKET NO.  
UNIT NAME  
DATE  
COMPLETED BY  
TELEPHONE

50 - 315  
D.C. Cook Unit 1  
February 4, 2000  
J. W. Minor  
616-465-5901

**AVERAGE DAILY POWER LEVEL (MWe-Net)**

**January 2000**

DAY	AVERAGE DAILY POWER LEVEL	DAY	AVERAGE DAILY POWER LEVEL
1/1/2000	0	1/17/2000	0
1/2/2000	0	1/18/2000	0
1/3/2000	0	1/19/2000	0
1/4/2000	0	1/20/2000	0
1/5/2000	0	1/21/2000	0
1/6/2000	0	1/22/2000	0
1/7/2000	0	1/23/2000	0
1/8/2000	0	1/24/2000	0
1/9/2000	0	1/25/2000	0
1/10/2000	0	1/26/2000	0
1/11/2000	0	1/27/2000	0
1/12/2000	0	1/28/2000	0
1/13/2000	0	1/29/2000	0
1/14/2000	0	1/30/2000	0
1/15/2000	0	1/31/2000	0
1/16/2000	0		

DOCKET NO. 50 - 315  
 UNIT NAME D.C. Cook Unit 1  
 DATE February 8, 2000  
 COMPLETED BY MB Depuydt  
 TELEPHONE 616-465-5901  
 PAGE 1 of 1

**UNIT SHUTDOWNS AND POWER REDUCTIONS -- January 2000**

NO.	DATE	TYPE <sup>1</sup>	DURATION HOURS	REASON <sup>2</sup>	METHOD OF SHUTTING DOWN REACTOR <sup>3</sup>	LICENSEE EVENT REPORT NO.	SYSTEM CODE <sup>4</sup>	COMPONENT CODE <sup>5</sup>	CAUSE AND CORRECTIVE ACTION TO PREVENT RECURRENCE
333	090897	F	744.0	F	2	97-010 97-011 97-012 97-013 97-014 97-016	N/A N/A N/A N/A N/A N/A	N/A N/A N/A N/A N/A N/A	The unit remained shutdown to resolve design basis questions discovered during the NRC Architect and Engineering (AE) Inspection.

**1 TYPE:**  
 F: Forced  
 S: Scheduled

**2 REASON:**  
 A: Equipment Failure (Explain)  
 B: Maintenance or Test  
 C: Refueling  
 D: Regulatory Restriction  
 E: Operator Training and License Examination  
 F: Administrative  
 G: Operational Error (Explain)  
 H: Other (Explain)

**3 METHOD:**  
 1: Manual  
 2: Manual Scram  
 3: Automatic Scram  
 4: Other (Explain)

**4 SYSTEM:**  
 Exhibit G - Instructions  
 for preparation of data  
 entry sheets for Licensee  
 Event Report (LER) File  
 (NUREG 0161)

**5 COMPONENT:**  
 Exhibit I: Same Source



2 4 4 3

1/14/2000

Distri49.txt  
Distribution Sheet

Priority: Normal

From: Esperanza Lomosbog

Action Recipients:	Copies:	
J Stang	1	Not Found

Internal Recipients:		
RGN 3	1	Not Found
RES/DRAA/OERAB	1	Not Found
OCFO/DBBA	1	Not Found
<u>FILE CENTER 01</u>	1	Not Found
ACRS	1	Not Found

External Recipients:		
NOAC	1	Not Found
INEEL Marshall	1	Not Found

Total Copies:	-----	
	8	

Item: ADAMS Document  
Library: ML\_ADAMS^HQNTAD01  
ID: 003678909

Subject:  
Monthly operating report for December 1999 for D. C. Cook Nuclear Plant, Unit 1. With 000114 letter.

Body:

Docket: 05000315, Notes: N/A

MR



Indiana Michigan  
Power Company  
Cook Nuclear Plant  
One Cook Place  
Bridgman, MI 49106  
616-465-6901



January 14, 2000

United States Nuclear Regulatory Commission  
Document Control Desk  
Washington, DC 20555

Document Control Manager:

Pursuant to the requirements of Donald C. Cook Nuclear Plant Unit 1 Technical Specification 6.9.1.8, the attached Monthly Operating Report for December 1999 is submitted.

Sincerely,

A handwritten signature in cursive script, appearing to read "Robert C. Godley".

R. C. Godley  
Regulatory Affairs Director

RCG/mbd

Attachments

c: ANI Nuclear Engineering Department  
A. C. Bakken, III  
G. T. Gaffney – Canton  
D. R. Hahn – Department of Health  
S. Hamming – Department of Labor  
INPO Records Center  
G. John  
B. Lewis – McGraw-Hill Companies  
D. H. Malin  
NRC Project Manager – NRR  
NRC Region III  
NRC Resident Inspector  
T. P. Noonan  
D. W. Paul – Lancaster  
J. E. Pollock  
R. P. Powers  
Regulatory Licensing Manager  
M. W. Rencheck  
W. H. Schalk  
D. G. Turner

003678909

IE24

# NRC OPERATING DATA REPORT

DOCKET NO. 50 - 315  
 DATE January 5, 2000  
 COMPLETED BY J. W. Minor  
 TELEPHONE 616-465-5901

**OPERATING STATUS**

- 1. Unit Name D. C. Cook Unit 1
- 2. Reporting Period Dec-99
- 3. Licensed Thermal Power (MWt) 3250
- 4. Name Plate Rating (Gross MWe) 1152
- 5. Design Electrical Rating (Net MWe) 1020
- 6. Maximum Dependable Capacity (GROSS MWe) 1056
- 7. Maximum Dependable Capacity (Net MWe) 1000

Notes:

8. If Changes Occur in Capacity Ratings (Items no. 3 through 7) Since Last Report Give Reasons: \_\_\_\_\_

9. Power Level to Which Restricted, If Any (Net MWe): \_\_\_\_\_

10. Reasons For Restrictions, If Any: \_\_\_\_\_

	This Month	Year-to-Date	Cumulative
11. Hours in Reporting Period	744.0	8760.00	219144.0
12. No. of Hrs. Reactor Was Critical	0.0	0.0	151285.3
13. Reactor Reserve Shutdown Hours	0.0	0.0	463.0
14. Hours Generator on Line	0.0	0.0	148821.1
15. Unit Reserve Shutdown Hours	0.0	0.0	321.0
16. Gross Thermal Energy Gen. (MWH)	0.0	0.0	440194814.0
17. Gross Electrical Energy Gen. (MWH)	0.0	0.0	143013940.0
18. Net Electrical Energy Gen. (MWH)	0.0	0.0	137597640.0
19. Unit Service Factor	0.0	0.0	68.5
20. Unit Availability Factor	0.0	0.0	68.5
21. Unit Capacity Factor (MDC Net)	0.0	0.0	62.5
22. Unit Capacity Factor (DER Net)	0.0	0.0	60.9
23. Unit Forced Outage Rate	100.0	100.0	16.7

24. Shutdowns Scheduled over Next Six Months (Type, Date, and Duration): \_\_\_\_\_  
 None

25. If Shut Down At End of Report Period, Estimated Date of Startup: \_\_\_\_\_  
 September 2000

26. Units in Test Status (Prior to Commercial Operation):

	Forecast	Achieved
INITIAL CRITICALITY		
INITIAL ELECTRICITY		
COMMERCIAL OPERATION		

DOCKET NO.  
UNIT NAME  
DATE  
COMPLETED BY  
TELEPHONE

50 - 315  
D.C. Cook Unit 1  
January 5, 2000  
J. W. Minor  
616-465-5901

AVERAGE DAILY POWER LEVEL (MWe-Net)

December 99

DAY	AVERAGE DAILY POWER LEVEL	DAY	AVERAGE DAILY POWER LEVEL
12/1/99	0	12/17/99	0
12/2/99	0	12/18/99	0
12/3/99	0	12/19/99	0
12/4/99	0	12/20/99	0
12/5/99	0	12/21/99	0
12/6/99	0	12/22/99	0
12/7/99	0	12/23/99	0
12/8/99	0	12/24/99	0
12/9/99	0	12/25/99	0
12/10/99	0	12/26/99	0
12/11/99	0	12/27/99	0
12/12/99	0	12/28/99	0
12/13/99	0	12/29/99	0
12/14/99	0	12/30/99	0
12/15/99	0	12/31/99	0
12/16/99	0		

DOCKET NO. 50 - 315  
 UNIT NAME D.C. Cook Unit 1  
 DATE January 9, 2000  
 COMPLETED BY MB Depuydt  
 TELEPHONE 616-465-5901  
 PAGE 1 of 1

UNIT SHUTDOWNS AND POWER REDUCTIONS - December 1999

NO.	DATE	TYPE <sup>1</sup>	DURATION HOURS	REASON <sup>2</sup>	METHOD OF SHUTTING DOWN REACTOR <sup>3</sup>	LICENSEE EVENT REPORT NO.	SYSTEM CODE <sup>4</sup>	COMPONENT CODE <sup>5</sup>	CAUSE AND CORRECTIVE ACTION TO PREVENT RECURRENCE
333	090897	F	744.0	F	2	97-010	N/A	N/A	The unit remained shutdown to resolve design basis questions discovered during the NRC Architect and Engineering (AE) Inspection.
						97-011	N/A	N/A	
						97-012	N/A	N/A	
						97-013	N/A	N/A	
						97-014	N/A	N/A	
						97-016	N/A	N/A	

**1 TYPE:**  
 F: Forced  
 S: Scheduled

**2 REASON:**  
 A: Equipment Failure (Explain)  
 B: Maintenance or Test  
 C: Refueling  
 D: Regulatory Restriction  
 E: Operator Training and License Examination  
 F: Administrative  
 G: Operational Error (Explain)  
 H: Other (Explain)

**3 METHOD:**  
 1: Manual  
 2: Manual Scram  
 3: Automatic Scram  
 4: Other (Explain)

**4 SYSTEM:**  
 Exhibit G - Instructions for preparation of data entry sheets for Licensee Event Report (LER) File (NUREG 0161)

**5 COMPONENT:**  
 Exhibit I: Same Source

1/14/2000

Distri29.txt  
Distribution Sheet

Priority: Normal

From: Andy Hoy

Action Recipients:	Copies:	
J Stang	1	Paper Copy

Internal Recipients:		
RGN3.	1	Paper Copy
RES/DRAA/OERAB	1	Paper Copy
OCEO/DPBA	1	Paper Copy
<u>FILE CENTER 01</u>	1	Paper Copy
ACRS	1	Paper Copy

External Recipients:		
NOAC	1	Paper Copy
INEEL Marshall	1	Paper Copy

Total Copies:	----- 8
---------------	------------

Item: ADAMS Document  
Library: ML\_ADAMS^HQNTAD01  
ID: 003677047

Subject:  
Monthly operating report for December 1999 for D. C. Cook Nuclear Plant, Unit 1. With letter dated 1/14/00.

Body:  
ADAMS DISTRIBUTION NOTIFICATION.

Electronic Recipients can RIGHT CLICK and OPEN the first Attachment to View the Document in ADAMS. The Document may also be viewed by searching for or Accession Number ML003677047.

IE24 - Monthly Operating Report (per Tech Specs)

Docket: 05000315

MO



January 14, 2000

United States Nuclear Regulatory Commission  
Document Control Desk  
Washington, DC 20555

Document Control Manager:

Pursuant to the requirements of Donald C. Cook Nuclear Plant Unit 1 Technical Specification 6.9.1.8, the attached Monthly Operating Report for December 1999 is submitted.

Sincerely,

R. C. Godley  
Regulatory Affairs Director

RCG/mbd

Attachments

- c: ANI Nuclear Engineering Department  
A. C. Bakken, III  
G. T. Gaffney – Canton  
D. R. Hahn – Department of Health  
S. Hamming – Department of Labor  
INPO Records Center  
G. John  
B. Lewis – McGraw-Hill Companies  
D. H. Malin  
NRC Project Manager – NRR  
NRC Region III  
NRC Resident Inspector  
T. P. Noonan  
D. W. Paul – Lancaster  
J. E. Pollock  
R. P. Powers  
Regulatory Licensing Manager  
M. W. Rencheck  
W. H. Schalk  
D. G. Turner

# NRC OPERATING DATA REPORT

DOCKET NO.	50 - 315
DATE	January 5, 2000
COMPLETED BY	J. W. Minor
TELEPHONE	616-465-5901

**OPERATING STATUS**

1. Unit Name	D. C. Cook Unit 1
2. Reporting Period	Dec-99
3. Licensed Thermal Power (MWt)	3250
4. Name Plate Rating (Gross MWe)	1152
5. Design Electrical Rating (Net MWe)	1020
6. Maximum Dependable Capacity (GROSS MWe)	1056
7. Maximum Dependable Capacity (Net MWe)	1000

Notes:

8. If Changes Occur in Capacity Ratings (Items no. 3 through 7) Since Last Report Give Reasons: \_\_\_\_\_

9. Power Level to Which Restricted, If Any (Net MWe): \_\_\_\_\_

10. Reasons For Restrictions, If Any: \_\_\_\_\_

	This Month	Year-to-Date	Cumulative
11. Hours in Reporting Period	744.0	8760.00	219144.0
12. No. of Hrs. Reactor Was Critical	0.0	0.0	151285.3
13. Reactor Reserve Shutdown Hours	0.0	0.0	463.0
14. Hours Generator on Line	0.0	0.0	148821.1
15. Unit Reserve Shutdown Hours	0.0	0.0	321.0
16. Gross Thermal Energy Gen. (MWH)	0.0	0.0	440194814.0
17. Gross Electrical Energy Gen. (MWH)	0.0	0.0	143013940.0
18. Net Electrical Energy Gen. (MWH)	0.0	0.0	137597640.0
19. Unit Service Factor	0.0	0.0	68.5
20. Unit Availability Factor	0.0	0.0	68.5
21. Unit Capacity Factor (MDC Net)	0.0	0.0	62.5
22. Unit Capacity Factor (DER Net)	0.0	0.0	60.9
23. Unit Forced Outage Rate	100.0	100.0	16.7

24. Shutdowns Scheduled over Next Six Months (Type, Date, and Duration): \_\_\_\_\_  
 None

25. If Shut Down At End of Report Period, Estimated Date of Startup: \_\_\_\_\_  
 September 2000

26. Units in Test Status (Prior to Commercial Operation):

	Forecast	Achieved
INITIAL CRITICALITY		
INITIAL ELECTRICITY		
COMMERCIAL OPERATION		





DOCKET NO.  
UNIT NAME  
DATE  
COMPLETED BY  
TELEPHONE

50 - 315  
D.C. Cook Unit 1  
January 5, 2000  
J. W. Minor  
616-465-5901

**AVERAGE DAILY POWER LEVEL (MWe-Net)**

**December 99**

DAY	AVERAGE DAILY POWER LEVEL	DAY	AVERAGE DAILY POWER LEVEL
12/1/99	0	12/17/99	0
12/2/99	0	12/18/99	0
12/3/99	0	12/19/99	0
12/4/99	0	12/20/99	0
12/5/99	0	12/21/99	0
12/6/99	0	12/22/99	0
12/7/99	0	12/23/99	0
12/8/99	0	12/24/99	0
12/9/99	0	12/25/99	0
12/10/99	0	12/26/99	0
12/11/99	0	12/27/99	0
12/12/99	0	12/28/99	0
12/13/99	0	12/29/99	0
12/14/99	0	12/30/99	0
12/15/99	0	12/31/99	0
12/16/99	0		

DOCKET NO. 50 - 315  
 UNIT NAME D.C. Cook Unit 1  
 DATE January 9, 2000  
 COMPLETED BY MB Depuydt  
 TELEPHONE 616-465-5901  
 PAGE 1 of 1

**UNIT SHUTDOWNS AND POWER REDUCTIONS – December 1999**

NO.	DATE	TYPE <sup>1</sup>	DURATION HOURS	REASON <sup>2</sup>	METHOD OF SHUTTING DOWN REACTOR <sup>3</sup>	LICENSEE EVENT REPORT NO.	SYSTEM CODE <sup>4</sup>	COMPONENT CODE <sup>5</sup>	CAUSE AND CORRECTIVE ACTION TO PREVENT RECURRENCE
333	090897	F	744.0	F	2	97-010	N/A	N/A	The unit remained shutdown to resolve design basis questions discovered during the NRC Architect and Engineering (AE) Inspection.
						97-011	N/A	N/A	
						97-012	N/A	N/A	
						97-013	N/A	N/A	
						97-014	N/A	N/A	
						97-016	N/A	N/A	

208  
 15  
 15  
 15  
 15

**1 TYPE:**  
 F: Forced  
 S: Scheduled

**2 REASON:**  
 A: Equipment Failure (Explain)  
 B: Maintenance or Test  
 C: Refueling  
 D: Regulatory Restriction  
 E: Operator Training and License Examination  
 F: Administrative  
 G: Operational Error (Explain)  
 H: Other (Explain)

**3 METHOD:**  
 1: Manual  
 2: Manual Scram  
 3: Automatic Scram  
 4: Other (Explain)

**4 SYSTEM:**  
 Exhibit G - Instructions  
 for preparation of data  
 entry sheets for Licensee  
 Event Report (LER) File  
 (NUREG 0161)

**5 COMPONENT:**  
 Exhibit I: Same Source

10 24 1944

10 24 1944

12/8/99

Distri63.txt  
Distribution Sheet

Priority: Normal

From: Esperanza Lomosbog

Action Recipients:	Copies:	
J Stang	1	Not Found
Internal Recipients:		
RGN 3	1	Not Found
RES/DRAA/OERAB	1	Not Found
OC/DBA/PAD	1	Not Found
<u>FILE CENTER 01</u>	1	Not Found
ACRS	1	Not Found
External Recipients:		
NRC PDR	1	Not Found
NOAC	1	Not Found
INEEL Marshall	1	Not Found

Total Copies: -----  
9

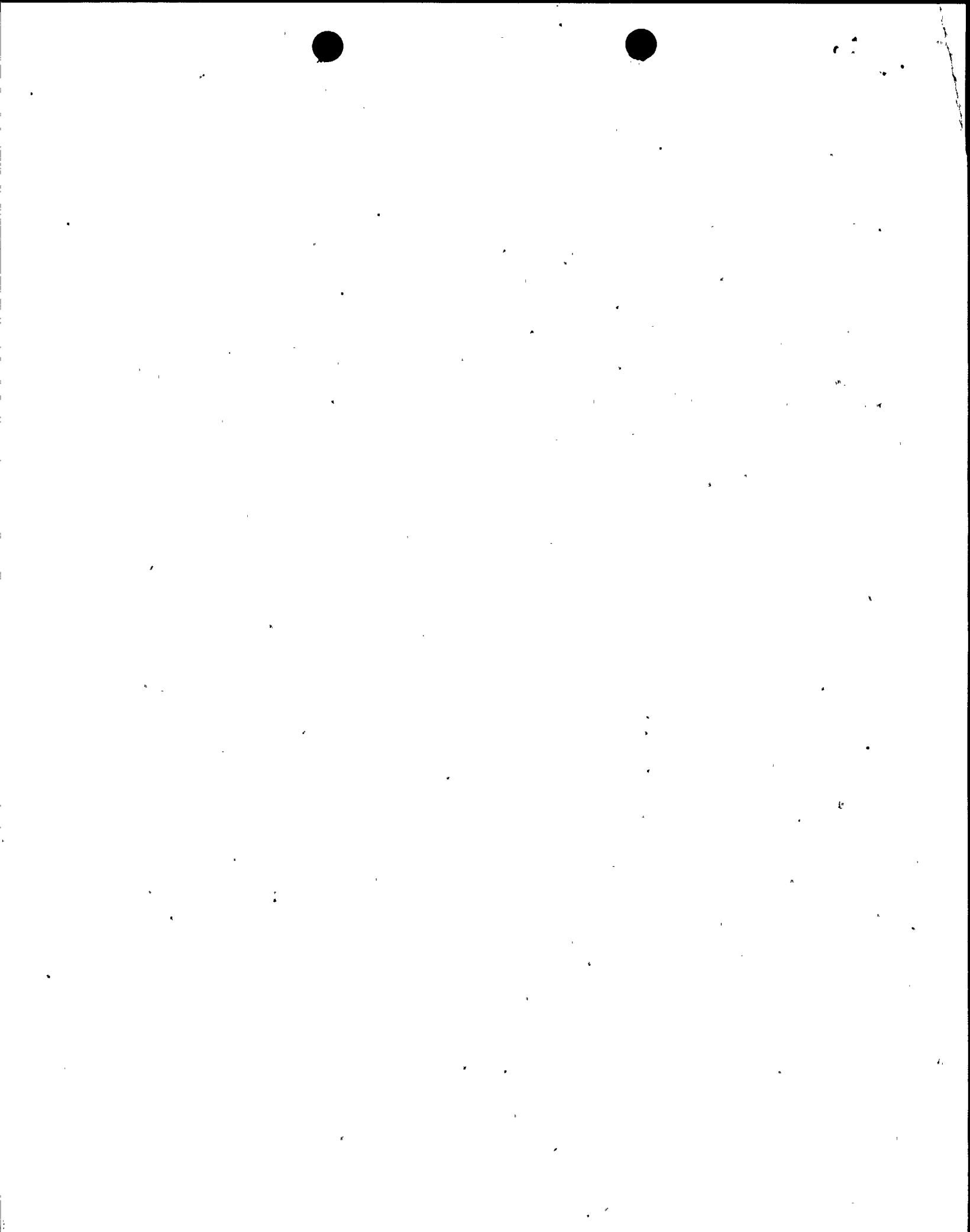
Item: ADAMS Document  
Library: ML\_ADAMS^HQNTAD01  
ID: 993500245

Subject:  
Monthly operating report for D. C. Cook Nuclear Plant, Unit 1. With 99  
1208 letter.

Body:  
PDR ADOCK 05000315 R

Docket: 05000315, Notes: N/A

MR



Indiana Michigan  
Power Company  
Cook Nuclear Plant  
One Cook Plant  
Bridgman, MI 49106  
616 465 5901



December 8, 1999

United States Nuclear Regulatory Commission  
Document Control Desk  
Washington, DC 20555

Document Control Manager:

Pursuant to the requirements of Donald C. Cook Nuclear Plant Unit 1 Technical Specification 6.9.1.8, the attached Monthly Operating Report for November 1999 is submitted.

Sincerely,

R. C. Godley  
Regulatory Affairs Director

RCG/mbd

Attachments

- c: ANI Nuclear Engineering Department
  - A. C. Bakken, III
  - G. T. Gaffney - Canton
  - D. R. Hahn - Department of Health
  - S. Hamming - Department of Labor
- INPO Records Center
  - G. John
  - B. Lewis - McGraw-Hill Companies
  - D. H. Malin
- NRC Project Manager - NRR
- NRC Region III
- NRC Resident Inspector
  - T. P. Noonan
  - D. W. Paul - Lancaster
  - J. E. Pollock
  - R. P. Powers
- Regulatory Licensing Manager
  - M. W. Rencheck
  - W. H. Schalk
  - D. G. Turner

JE24

POL APOC 05000315

ML993500245

AEP American Energy Partner

# NRC OPERATING DATA REPORT

DOCKET NO.	50 - 315
DATE	December 3, 1999
COMPLETED BY	J. W. Minor
TELEPHONE	616-465-5901

**OPERATING STATUS**

1. Unit Name	D. C. Cook Unit 1
2. Reporting Period	Nov-99
3. Licensed Thermal Power (MWt)	3250
4. Name Plate Rating (Gross MWe)	1152
5. Design Electrical Rating (Net MWe)	1020
6. Maximum Dependable Capacity (GROSS MWe)	1056
7. Maximum Dependable Capacity (Net MWe)	1000

Notes:

8. If Changes Occur in Capacity Ratings (Items no. 3 through 7) Since Last Report Give Reasons: \_\_\_\_\_

9. Power Level to Which Restricted, If Any (Net MWe): \_\_\_\_\_

10. Reasons For Restrictions, If Any: \_\_\_\_\_

	This Month	Year-to-Date	Cumulative
11. Hours in Reporting Period	720.0	8016.00	218400.0
12. No. of Hrs. Reactor Was Critical	0.0	0.0	151285.3
13. Reactor Reserve Shutdown Hours	0.0	0.0	463.0
14. Hours Generator on Line	0.0	0.0	148821.1
15. Unit Reserve Shutdown Hours	0.0	0.0	321.0
16. Gross Thermal Energy Gen. (MWH)	0.0	0.0	440194814.0
17. Gross Electrical Energy Gen. (MWH)	0.0	0.0	143013940.0
18. Net Electrical Energy Gen. (MWH)	0.0	0.0	137597640.0
19. Unit Service Factor	0.0	0.0	68.7
20. Unit Availability Factor	0.0	0.0	68.7
21. Unit Capacity Factor (MDC Net)	0.0	0.0	62.7
22. Unit Capacity Factor (DER Net)	0.0	0.0	61.1
23. Unit Forced Outage Rate	100.0	100.0	16.3

24. Shutdowns Scheduled over Next Six Months (Type, Date, and Duration): \_\_\_\_\_  
 None

25. If Shut Down At End of Report Period, Estimated Date of Startup: \_\_\_\_\_  
 September 2000

26. Units in Test Status (Prior to Commercial Operation):

	Forecast	Achieved
INITIAL CRITICALITY		
INITIAL ELECTRICITY		
COMMERCIAL OPERATION		

DOCKET NO.  
UNIT NAME  
DATE  
COMPLETED BY  
TELEPHONE

50 - 315  
D.C. Cook Unit 1  
December 3, 1999  
J. W. Minor  
616-465-5901

**AVERAGE DAILY POWER LEVEL (MWe-Net)**

**November 1999**

DAY	AVERAGE DAILY POWER LEVEL	DAY	AVERAGE DAILY POWER LEVEL
11/1/99	0	11/17/99	0
11/2/99	0	11/18/99	0
11/3/99	0	11/19/99	0
11/4/99	0	11/20/99	0
11/5/99	0	11/21/99	0
11/6/99	0	11/22/99	0
11/7/99	0	11/23/99	0
11/8/99	0	11/24/99	0
11/9/99	0	11/25/99	0
11/10/99	0	11/26/99	0
11/11/99	0	11/27/99	0
11/12/99	0	11/28/99	0
11/13/99	0	11/29/99	0
11/14/99	0	11/30/99	0
11/15/99	0		
11/16/99	0		



DOCKET NO. 50 - 315  
 UNIT NAME D.C. Cook Unit 1  
 DATE December 6, 1999  
 COMPLETED BY S. Cherba  
 TELEPHONE 616-465-5901  
 PAGE 1 of 1

UNIT SHUTDOWNS AND POWER REDUCTIONS – November 1999

NO.	DATE	TYPE <sup>1</sup>	DURATION HOURS	REASON <sup>2</sup>	METHOD OF SHUTTING DOWN REACTOR <sup>3</sup>	LICENSEE EVENT REPORT NO.	SYSTEM CODE <sup>4</sup>	COMPONENT CODE <sup>5</sup>	CAUSE AND CORRECTIVE ACTION TO PREVENT RECURRENCE
333	090897	F	720.0	F	2	97-010	N/A	N/A	The unit remained shutdown to resolve design basis questions discovered during the NRC Architect and Engineering (AE) Inspection.
						97-011	N/A	N/A	
						97-012	N/A	N/A	
						97-013	N/A	N/A	
						97-014	N/A	N/A	
						97-016	N/A	N/A	

1 TYPE:

F: Forced  
 S: Scheduled

2 REASON:

A: Equipment Failure (Explain)  
 B: Maintenance or Test  
 C: Refueling  
 D: Regulatory Restriction  
 E: Operator Training and License Examination  
 F: Administrative  
 G: Operational Error (Explain)  
 H: Other (Explain)

3 METHOD:

1: Manual  
 2: Manual Scram  
 3: Automatic Scram  
 4: Other (Explain)

4 SYSTEM:

Exhibit G - Instructions for preparation of data entry sheets for Licensee Event Report (LER) File (NUREG 0161)

5 COMPONENT:

Exhibit I: Same Source

11/9/99

Distri20.txt

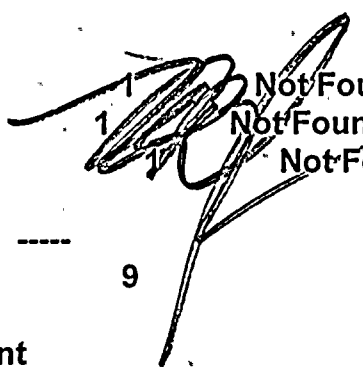
Distribution Sheet

Priority: Normal

From: Stefanie Fountain

Action Recipients:		Copies:
J Stang	1	Not Found
Internal Recipients:		
RGN 3	1	Not Found
RES/DRAA/OERAB	1	Not Found
OC/DBA/PAD	1	Not Found
<u>FILE CENTER 01</u>	1	Not Found
ACRS	1	Not Found

External Recipients:		
NRC PDR	1	Not Found
NOAC	1	Not Found
INEEL Marshall	1	Not Found



Total Copies: 9

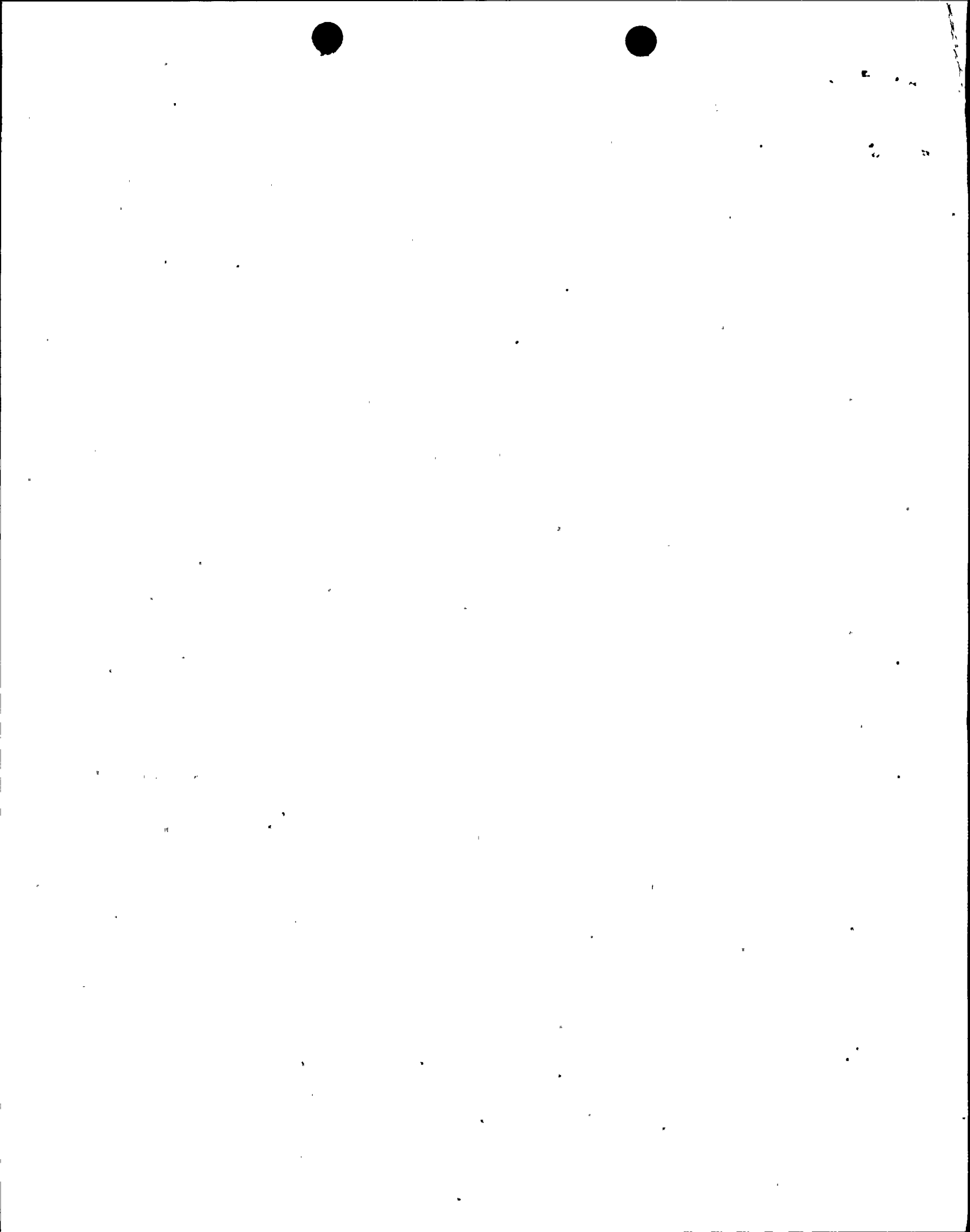
Item: ADAMS Document  
 Library: ML\_ADAMS^HQNTAD01  
 ID: 993250001

Subject:  
 Monthly operating report for October 1999 for Donald C Cook Nuclear Plant Unit 1

Body:  
 PDR ADOCK.05000315

Docket: 05000315, Notes: N/A

ME



Indiana Michigan  
Power Company  
Cook Nuclear Plant  
One Cook Place  
Bridgman, MI 49106  
616-465-5901



November 9, 1999

United States Nuclear Regulatory Commission  
Document Control Desk  
Washington, DC 20555

Document Control Manager:

Pursuant to the requirements of Donald C. Cook Nuclear Plant Unit 1 Technical Specification 6.9.1.8, the attached Monthly Operating Report for October 1999 is submitted.

Sincerely,

A handwritten signature in cursive script that reads "Robert Godley".

R. C. Godley  
Regulatory Affairs Director

RCG/mbd

Attachment

c: NRC Region III  
NRC Project Manager – NRR  
NRC Resident Inspector  
ANI Nuclear Engineering Department  
INPO Records Center

A. C. Bakken, III  
G. T. Gaffney – Canton  
D. R. Hahn – Department of Health  
S. Hamming – Department of Labor  
G. John  
B. Lewis – McGraw-Hill Companies  
D. H. Malin  
T. P. Noonan  
D. W. Paul – Lancaster  
J. E. Pollock  
R. P. Powers  
Regulatory Licensing Manager  
M. W. Rencheck  
W. H. Schalk  
D. G. Turner

IE24

0500315 R  
10/31/99

# NRC OPERATING DATA REPORT

DOCKET NO. 50 - 315  
 DATE November 4, 1999  
 COMPLETED BY J. W. Minor  
 TELEPHONE 616-465-5901

**OPERATING STATUS**

- 1. Unit Name D. C. Cook Unit 1
- 2. Reporting Period Oct-99
- 3. Licensed Thermal Power (MWt) 3250
- 4. Name Plate Rating (Gross MWe) 1152
- 5. Design Electrical Rating (Net MWe) 1020
- 6. Maximum Dependable Capacity (GROSS MWe) 1056
- 7. Maximum Dependable Capacity (Net MWe) 1000

Notes:

8. If Changes Occur in Capacity Ratings (Items no. 3 through 7) Since Last Report Give Reasons: \_\_\_\_\_

9. Power Level to Which Restricted, If Any (Net MWe): \_\_\_\_\_

10. Reasons For Restrictions, If Any: \_\_\_\_\_

	This Month	Year-to-Date	Cumulative
11. Hours in Reporting Period	744.0	7320.0	217704.0
12. No. of Hrs. Reactor Was Critical	0.0	0.0	151285.3
13. Reactor Reserve Shutdown Hours	0.0	0.0	463.0
14. Hours Generator on Line	0.0	0.0	148821.1
15. Unit Reserve Shutdown Hours	0.0	0.0	321.0
16. Gross Thermal Energy Gen. (MWH)	0.0	0.0	440194814.0
17. Gross Electrical Energy Gen. (MWH)	0.0	0.0	143013940.0
18. Net Electrical Energy Gen. (MWH)	0.0	0.0	137597640.0
19. Unit Service Factor	0.0	0.0	68.9
20. Unit Availability Factor	0.0	0.0	68.9
21. Unit Capacity Factor (MDC Net)	0.0	0.0	62.9
22. Unit Capacity Factor (DER Net)	0.0	0.0	61.3
23. Unit Forced Outage Rate	100.0	100.0	16.0

24. Shutdowns Scheduled over Next Six Months (Type, Date, and Duration): \_\_\_\_\_  
 None

25. If Shut Down At End of Report Period, Estimated Date of Startup: \_\_\_\_\_  
 September 2000

26. Units in Test Status (Prior to Commercial Operation):

	Forecast	Achieved
INITIAL CRITICALITY		
INITIAL ELECTRICITY		
COMMERCIAL OPERATION		

DOCKET NO.  
UNIT NAME  
DATE  
COMPLETED BY  
TELEPHONE

50 - 315  
D.C. Cook Unit 1  
November 4, 1999  
J. W. Minor  
616-465-5901

**AVERAGE DAILY POWER LEVEL (MWe-Net)**

**October 1999**

DAY	AVERAGE DAILY POWER LEVEL	DAY	AVERAGE DAILY POWER LEVEL
10/1/99	0	10/17/99	0
10/2/99	0	10/18/99	0
10/3/99	0	10/19/99	0
10/4/99	0	10/20/99	0
10/5/99	0	10/21/99	0
10/6/99	0	10/22/99	0
10/7/99	0	10/23/99	0
10/8/99	0	10/24/99	0
10/9/99	0	10/25/99	0
10/10/99	0	10/26/99	0
10/11/99	0	10/27/99	0
10/12/99	0	10/28/99	0
10/13/99	0	10/29/99	0
10/14/99	0	10/30/99	0
10/15/99	0	10/31/99	0
10/16/99	0		

DOCKET NO. 50 - 315  
 UNIT NAME D.C. Cook Unit 1  
 DATE November 5, 1999  
 COMPLETED BY S. A. Richardson  
 TELEPHONE 616-465-5901  
 PAGE 1 of 1

**UNIT SHUTDOWNS AND POWER REDUCTIONS - October 1999**

NO.	DATE	TYPE <sup>1</sup>	DURATION HOURS	REASON <sup>2</sup>	METHOD OF SHUTTING DOWN REACTOR <sup>3</sup>	LICENSEE EVENT REPORT NO.	SYSTEM CODE <sup>4</sup>	COMPONENT CODE <sup>5</sup>	CAUSE AND CORRECTIVE ACTION TO PREVENT RECURRENCE
333	090897	F	744.0	F	2	97-010 97-011 97-012 97-013 97-014 97-016	N/A N/A N/A N/A N/A N/A	N/A N/A N/A N/A N/A N/A	The unit remained shutdown to resolve design basis questions discovered during the NRC Architect and Engineering (AE) Inspection.

**1 TYPE:**  
 F: Forced  
 S: Scheduled

**2 REASON:**  
 A: Equipment Failure (Explain)  
 B: Maintenance or Test  
 C: Refueling  
 D: Regulatory Restriction  
 E: Operator Training and License Examination  
 F: Administrative  
 G: Operational Error (Explain)  
 H: Other (Explain)

**3 METHOD:**  
 1: Manual  
 2: Manual Scram  
 3: Automatic Scram  
 4: Other (Explain)

**4 SYSTEM:**  
 Exhibit G - Instructions for preparation of data entry sheets for Licensee Event Report (LER) File (NUREG 0161)

**5 COMPONENT:**  
 Exhibit I: Same Source

REV 1 1977

21.0

2.0