

FORD 2

REGULATOR INFORMATION DISTRIBUTION SYSTEM (RIDS)

ACCESSION NBR: 9102080116 DOC. DATE: 90/02/28 NOTARIZED: NO DOCKET #
 FACIL: 50-316 Donald C. Cook Nuclear Power Plant, Unit 2, Indiana & 05000316
 AUTH. NAME AUTHOR AFFILIATION
 GILLETTE, W.T. Indiana Michigan Power Co. (formerly Indiana & Michigan Ele
 RECIP. NAME RECIPIENT AFFILIATION

SUBJECT: Monthly operating rept for Feb 1990 for Donald C Cook
 Nuclear Power Plant, Unit 2.

DISTRIBUTION CODE: DF01D COPIES RECEIVED: LTR 0 ENCL 1 SIZE: 4
 TITLE: Direct Flow Distribution: 50 Docket (PDR Avail)

NOTES:

| | RECIPIENT | | RECIPIENT | | RECIPIENT | |
|-----------|-----------|-----------|-----------|------|-----------|-----------|
| | ID | CODE/NAME | LTR | ENCL | ID | CODE/NAME |
| INTERNAL: | NUDOCS- | ABSTRACT | | 1 | REG FILE | 01 |
| EXTERNAL: | NRC | PDR | | 1 | NSIC | |

R
I
D
S
/
F
O
R
D
2
D
O
C
U
M
E
N
T

TOTAL NUMBER OF COPIES REQUIRED: LTR 0 ENCL 4

ent *mr*

N.R.C. OPERATING DATA REPORT

DOCKET NO. 50-316
 DATE 01-Mar-90
 COMPLETED BY WT GILLETT
 TELEPHONE 616-465-5901

OPERATING STATUS

1. Unit Name D. C. Cook Unit 2 -----
 2. Reporting Period FEB 90 notes
 3. Licensed Thermal Power (MWt) 3411
 4. Name Plate Rating (Gross MWe) 1133
 5. Design Electrical Rating (Net MWe) 1100
 6. Maximum Dependable Capacity (GROSS MWe) 1100
 7. Maximum Dependable Capacity (Net MWe) 1060 -----
 8. If Changes Occur in Capacity Ratings (Items no. 3 through 7) Since Last Report Give Reasons _____

9. Power Level To Which Restricted. If Any (Net MWe) _____
 10. Reasons For Restrictions. If Any: _____

| | This Mo. | Yr. to Date | Cumm. |
|--------------------------------------|----------|-------------|-----------|
| 11. Hours in Reporting Period | 672.0 | 1416.0 | 106608.0 |
| 12. No. of Hrs. Reactor Was Critical | 672.0 | 951.2 | 71127.2 |
| 13. Reactor Reserve Shutdown Hours | 0.0 | 0.0 | 0.0 |
| 14. Hours Generator on Line | 672.0 | 939.6 | 69669.1 |
| 15. Unit Reserve Shutdown Hours | 0.0 | 0.0 | 0.0 |
| 16. Gross Therm. Energy Gen. (MWH) | 2282581 | 3143711 | 214021601 |
| 17. Gross Elect. Energy Gen. (MWH) | 759280 | 1042610 | 69838720 |
| 18. Net Elect. Energy Gen. (MWH) | 734834 | 1008293 | 67253951 |
| 19. Unit Service Factor | 100.0 | 66.4 | 66.8 |
| 20. Unit Availability Factor | 100.0 | 66.4 | 66.8 |
| 21. Unit Capacity Factor (MDC Net) | 103.2 | 67.2 | 60.9 |
| 22. Unit Capacity Factor (DER Net) | 99.4 | 64.7 | 59.3 |
| 23. Unit Forced Outage Rate | 0.0 | 27.1 | 14.0 |

24. Shutdowns Scheduled over Next Six Months (Type, Date, and Duration):
~~Refueling outage to begin on June 23, 1990, for an estimated duration of 77 days.~~
REFUELING - JUNE 23, 1990 - 77 DAY DURATION.

25. ~~If Shut Down At End of Report Period, Estimated Date of Startup:~~

26. Units in Test Status (Prior to Commercial Operation):

| | | |
|----------------------|----------|----------|
| | Forecast | Achieved |
| INITIAL CRITICALITY | | |
| INITIAL ELECTRICITY | | |
| COMMERCIAL OPERATION | | |

9102080116 900228
 PDR ADCK 05000316
 R PDR

Handwritten: FEB 90 1501
 0/1



2 2 4
2 2 4
2 2 4

2 2 4

2 2 4

2 2 4
2 2 4
2 2 4

2 2 4

UNIT SHUTDOWNS AND POWER REDUCTIONS

REPORT MONTH: February, 1990

DOCKET NO: 50-316
 UNIT NAME: D.C. COOK UNIT 2
 DATE: March 9, 1990
 COMPLETED BY: E.C. Schimmel
 TELEPHONE: (616) 465-5901

| NO. | DATE | TYPE ¹ | DURATION HOURS | REASON ² | METHOD OF SHUTTING DOWN REACTOR ³ | LICENSEE EVENT REPORT NO. | SYSTEM CODE ⁴ | COMPONENT CODE ⁵ | CAUSE AND CORRECTIVE ACTION TO PREVENT RECURRENCE |
|-----|--------|-------------------|-------------------|---------------------|---|---------------------------------|-----------------------------|--------------------------------|--|
| 205 | 900214 | F | 0.0 | A | LS | N/A | CJ | PIPEXX | Unit power was reduced starting 0600 hours 900214 due to entering Technical Specification 3.6.1.1 Action Statement caused by a pipe fitting leak which potentially exceeded the allowable leakage rate. Technical Specification compliance was verified at 0736 hours 900214 and the power reduction was stopped at 78%. Unit power was restored to 100% at 1300 hours 900214. |

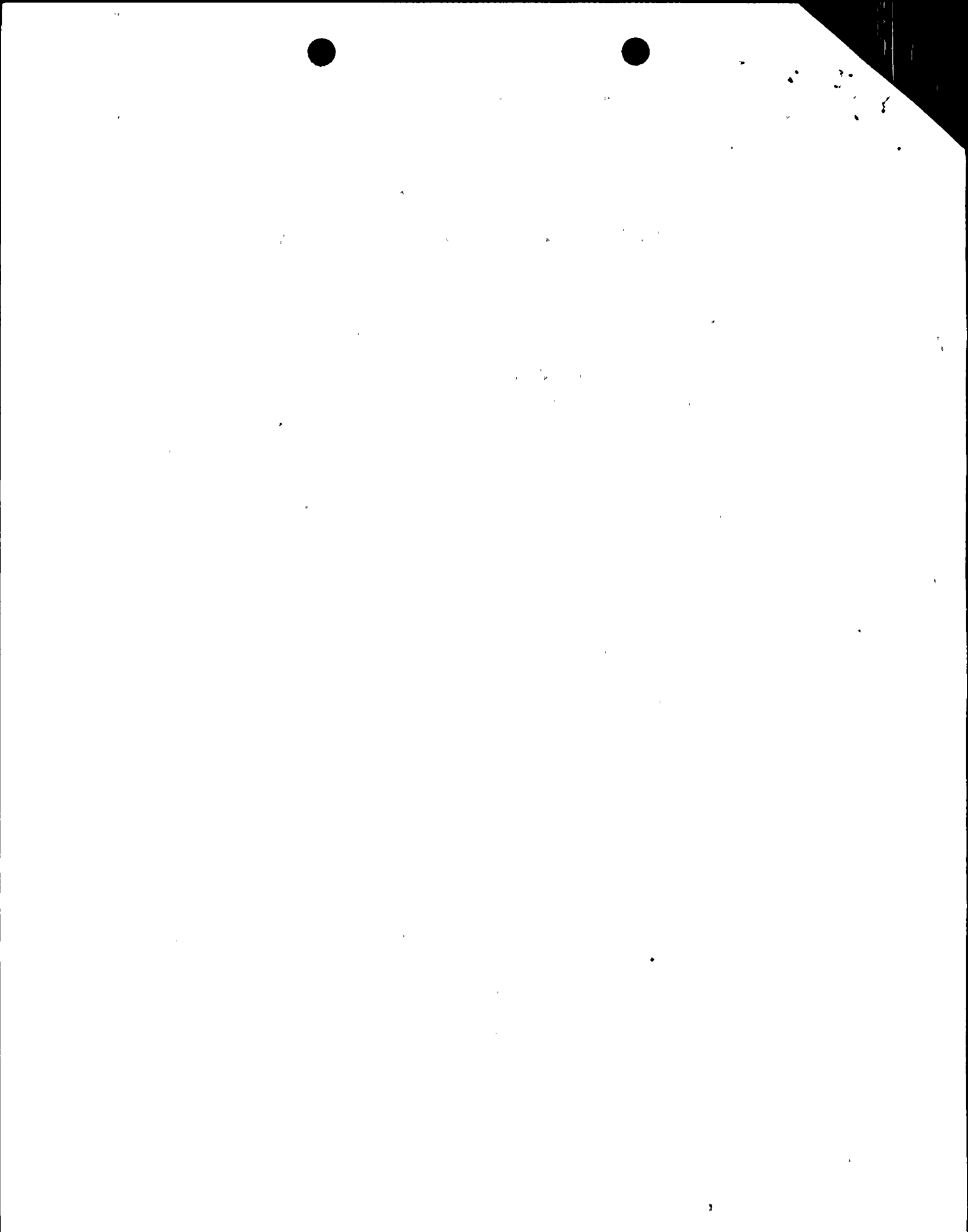
¹
 F: Forced
 S: Scheduled

²
 Reason:
 A: Equipment Failure (Explain)
 B: Maintenance or Test
 C: Refueling
 D: Regulatory Restriction
 E: Operator Training and License Examination
 F: Administrative
 G: Operational Error (Explain)
 H: Other (Explain)

³
 Method:
 1: Manual
 2: Manual Scram
 3: Automatic Scram
 4: Other (Explain)

⁴
 Exhibit G - Instructions for preparation of data entry sheets for Licensee Event Report (LER) File (NUREG 0161)

⁵
 Exhibit I: Same Source



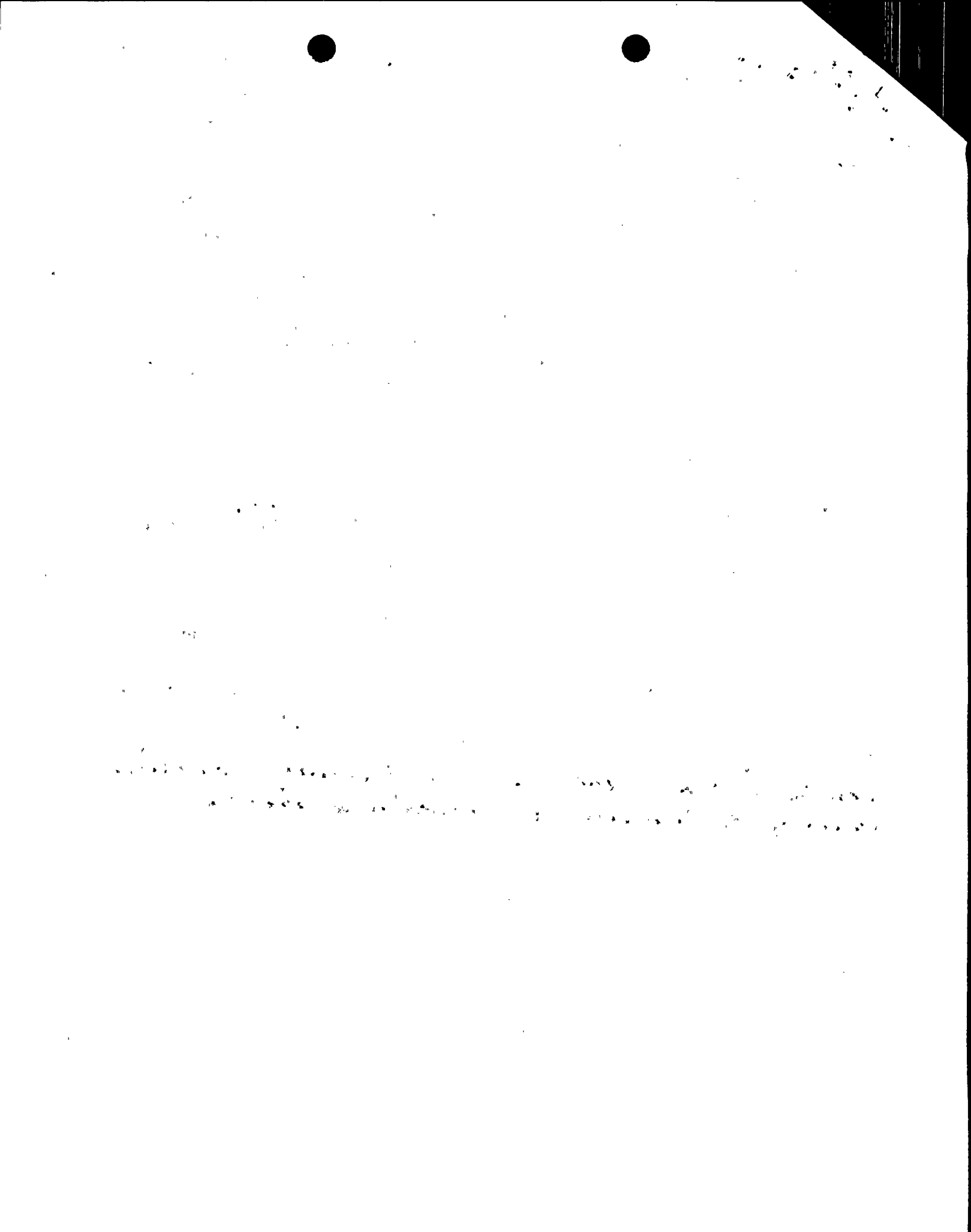
AVERAGE DAILY POWER LEVEL (MWe-Net)

DOCKET NO. 50-316
 UNIT TWO
 DATE 01-Mar-90
 COMPLETED BY WT GILLETT
 TELEPHONE 616-465-5901

MONTH FEB 90

| DAY | AVERAGE DAILY POWER LEVEL | DAY | AVERAGE DAILY POWER LEVEL |
|-----|------------------------------|-----|------------------------------|
| 1 | 1095 | 17 | 1098 |
| 2 | 1094 | 18 | 1096 |
| 3 | 1089 | 19 | 1100 |
| 4 | 1096 | 20 | 1098 |
| 5 | 1096 | 21 | 1104 |
| 6 | 1097 | 22 | 1100 |
| 7 | 1095 | 23 | 1098 |
| 8 | 1096 | 24 | 1097 |
| 9 | 1096 | 25 | 1098 |
| 10 | 1096 | 26 | 1096 |
| 11 | 1094 | 27 | 1089 |
| 12 | 1098 | 28 | 1045 |
| 13 | 1099 | | |
| 14 | 1057 | | |
| 15 | 1102 | | |
| 16 | 1101 | | |

Cook 2 incurred ~~to~~ one forced power reduction during February as described above.



DOCKET NO: 50-316
UNIT NAME: D.C. Cook Unit 2
COMPLETED BY: E.C. Schimmel
TELEPHONE: (616) 465-5901
DATE: March 9, 1990
PAGE: 1 of 1

MONTHLY OPERATING ACTIVITIES - February, 1990

HIGHLIGHTS

The unit entered the reporting period at 100% Rated Thermal Power. An unusual event was declared on 900214 due to a pipe fitting leak on the pressurizer liquid sample line which had a potential for affecting primary containment integrity. The unusual event was terminated when Technical Specification compliance was verified. The unit exited the reporting period at 100% Rated Thermal Power.

DETAILS

- 02-14-90 0600 Unusual event was declared due to entering Technical Specification 3.6.1.1, Action Statement on primary containment integrity due to an unquantified containment leak. Unit shutdown was initiated.
- 02-14-90 0736 Technical Specification 3.6.1.1 compliance was verified. Unusual event was terminated. Power reduction was terminated at 78% RTP.
- 02-14-90 0739 The unit commenced a power escalation to 100% RTP.
- 02-14-90 1300 The unit was at 100% RTP.

