

NOV 15 1990

DCD
DCB
CRids

Docket No. 50-315
Docket No. 50-316

Indiana Michigan Power Company
ATTN: Mr. Milton P. Alexich
Vice President
Nuclear Operations Division
1 Riverside Plaza
Columbus, OH 43216

Gentlemen:

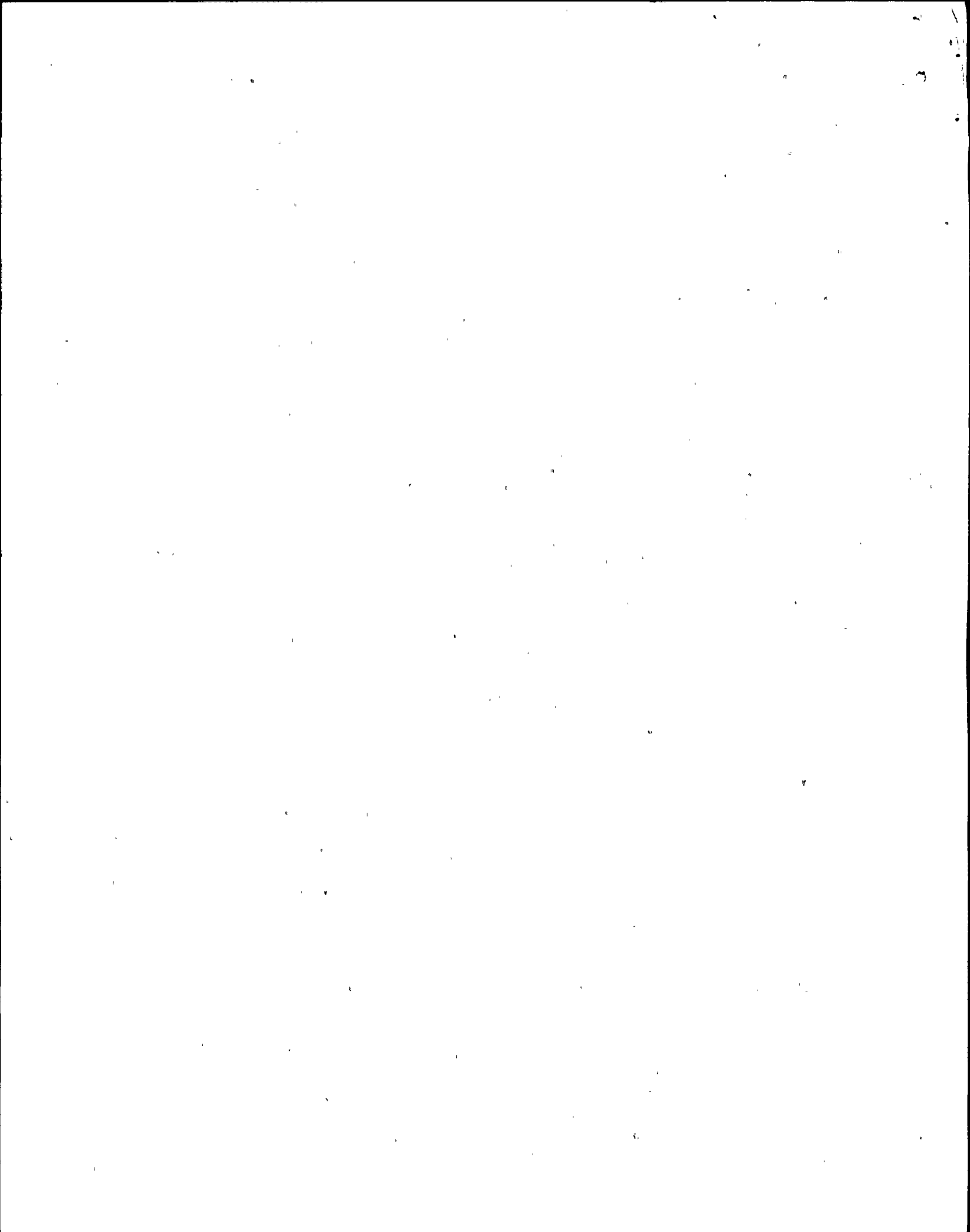
Enclosed for your review, prior to our scheduled meeting at the site on November 28, 1990, at 1:00 p.m., is the SALP 9 Board Report for the Donald C. Cook Nuclear Generating Plant, covering the period July 1, 1989 through August 31, 1990.

In accordance with NRC Policy, I have reviewed the SALP Board Assessment and concur with the ratings except the rating for Maintenance/Surveillance. The SALP Board deliberated at length on this functional area and had difficulty in determining whether the rating should be a Category 3 improving or a Category 2. The final determination by a majority of the members was Category 2. I have carefully considered your performance in this functional area and concluded that the appropriate rating is Category 3 with an improving trend. While I recognize some improvement in maintenance and material condition of the plant, I note that there were many weaknesses in maintenance practices. These included poor maintenance procedures and adherence to them; poor work histories and trending; many equipment leaks, although the number is decreasing now; undocumented temporary repairs; and a limited preventive maintenance program. I also note slow implementation of certain major aspects of your maintenance improvement program. Other specific highlights of the report are set forth below:

1. The Category 1 ratings in the areas of Operations and Emergency Planning were the same as in previous assessments. The Category 1 rating in Security was an improvement. This was largely based on substantial hardware improvements and effective management action to correct identified problems. You are to be commended for the performance reflected in these ratings.
2. Category 2 ratings were assigned to Radiological Controls and to Safety Assessment/Quality Verification. In general, these reflect an appropriate level of attention and performance in these areas.
3. A Category 3 rating was assigned to Engineering/Technical Support. This rating declined when compared to the previous assessment. The rating is based upon poor control of design, design verification, and assessment of equipment performance problems. Numerous deficiencies were also noted in the plant's fire protection safe shutdown program.

9011200208 901115
PDR ADDCK 05000315
Q PDC

LEAO
11



NOV 15 1990

DCD

Indiana Michigan Power Company

2

I am concerned that the weaknesses outlined in the SALP report in the areas of Maintenance and Engineering/Technical Support are long standing and that they have been known to you, yet actions have not been completed or were not effective. To ensure an increased focus on these problems, I have instructed my staff to increase the frequency of periodic meetings with your staff to closely track your corrective action on these issues on a more frequent basis. I also intend to monitor your progress personally.

At the SALP meeting you should be prepared to discuss our assessments and your plans to improve performance. The meeting is intended to be a candid dialogue wherein any comments you may have regarding our report are discussed. Additionally, you may provide written comments within thirty days after the meeting. Your comments, a summary of our meeting, and my disposition of your comments will be issued as the Final SALP Report.

In accordance with Section 2.790 of the NRC's "Rules of Practice," Part 2, Title 10, Code of Federal Regulations, a copy of this letter and the Initial SALP Board Report will be placed in the NRC's Public Document Room.

Should you have any questions concerning the SALP Report, we would be pleased to discuss them with you.

Sincerely,

Carl J. Paperella for

A. Bert Davis
Regional Administrator

Enclosure: Initial SALP 9
Reports No. 50-315/90-01;
No. 50-316/90-01

cc w/enclosure:

- J. H. Sniezek, DEDR
- T. E. Murley, Director, NRR
- K. M. Carr, Chairman
- K. C. Rogers, Commissioner
- J. R. Curtiss, Commissioner
- F. J. Remick, Commissioner

RIII *YES* 11-13-90 *YES* *(yes)* RIII *YES* RIII *YES* RIII *YES*
Edl *BBS* *WZ* *WZ* *WZ* *WZ*
 Schweibinz/dsv Burgess Hague Clayton Novakius Miller
 11/13/90 11/13/90 11/13/90 11/13/90 11/13/90 11/14/90
 RIII *PM* RIII *eff* RIII *YF*
 Martin Paperjello Davis
 11/12/90 11/17/90 11/17/90

NOV 15 1990

Indiana Michigan Power Company

3

Distribution (Continued)

T. G. Colburn, NRR Senior Project Manager
R. C. Pierson, NRR Director, Project Directorate III-I
J. Lieberman, Director, Office of
Enforcement
E. W. Brach, NRR
M. L. Dapas, NRR
C. F. Holden, NRR
R. L. Wharton, NRR
RIII PRR
State Liaison Officer, State
of Michigan
INPO
L. A. Reyes, RII
L. R. Greger, RIII
M. J. Pearson, RIII
L. L. Cox, RIII
RIII Files



UNITED STATES
NUCLEAR REGULATORY COMMISSION
REGION III
799 ROOSEVELT ROAD
GLEN ELLYN, ILLINOIS 60137

NOV 15 1990

Docket No. 50-315
Docket No. 50-316

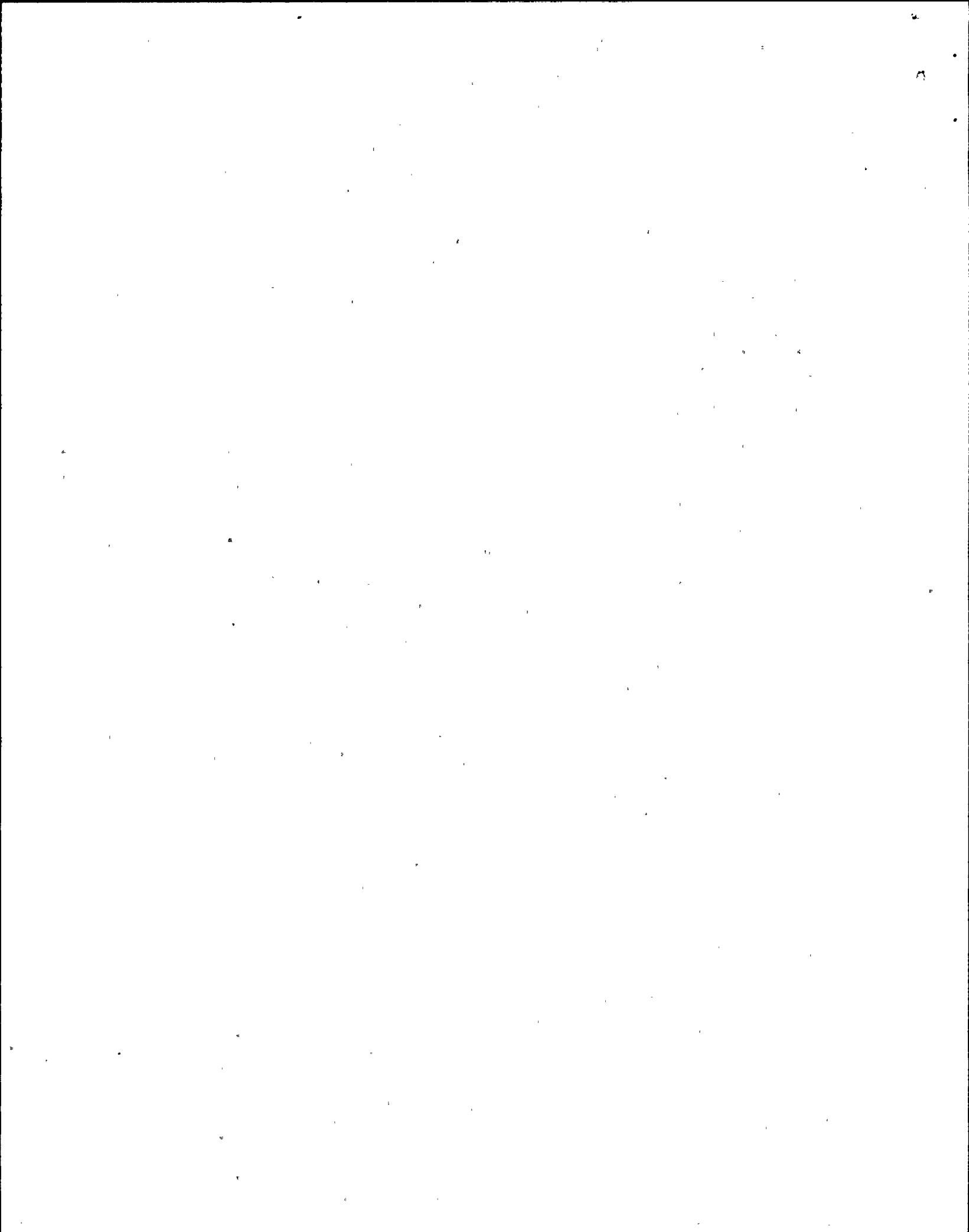
Indiana Michigan Power Company
ATTN: Mr. Milton P. Alexich
Vice President
Nuclear Operations Division
1 Riverside Plaza
Columbus, OH 43216

Gentlemen:

Enclosed for your review, prior to our scheduled meeting at the site on November 28, 1990, at 1:00 p.m., is the SALP 9 Board Report for the Donald C. Cook Nuclear Generating Plant, covering the period July 1, 1989 through August 31, 1990.

In accordance with NRC Policy, I have reviewed the SALP Board Assessment and concur with the ratings except the rating for Maintenance/Surveillance. The SALP Board deliberated at length on this functional area and had difficulty in determining whether the rating should be a Category 3 improving or a Category 2. The final determination by a majority of the members was Category 2. I have carefully considered your performance in this functional area and concluded that the appropriate rating is Category 3 with an improving trend. While I recognize some improvement in maintenance and material condition of the plant, I note that there were many weaknesses in maintenance practices. These included poor maintenance procedures and adherence to them; poor work histories and trending; many equipment leaks, although the number is decreasing now; undocumented temporary repairs; and a limited preventive maintenance program. I also note slow implementation of certain major aspects of your maintenance improvement program. Other specific highlights of the report are set forth below:

1. The Category 1 ratings in the areas of Operations and Emergency Planning were the same as in previous assessments. The Category 1 rating in Security was an improvement. This was largely based on substantial hardware improvements and effective management action to correct identified problems. You are to be commended for the performance reflected in these ratings.
2. Category 2 ratings were assigned to Radiological Controls and to Safety Assessment/Quality Verification. In general, these reflect an appropriate level of attention and performance in these areas.
3. A Category 3 rating was assigned to Engineering/Technical Support. This rating declined when compared to the previous assessment. The rating is based upon poor control of design, design verification, and assessment of equipment performance problems. Numerous deficiencies were also noted in the plant's fire protection safe shutdown program.



NOV 15 1990

Indiana Michigan Power Company

2

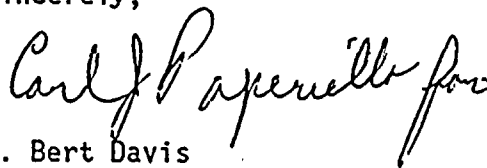
I am concerned that the weaknesses outlined in the SALP report in the areas of Maintenance and Engineering/Technical Support are long standing and that they have been known to you, yet actions have not been completed or were not effective. To ensure an increased focus on these problems, I have instructed my staff to increase the frequency of periodic meetings with your staff to closely track your corrective action on these issues on a more frequent basis. I also intend to monitor your progress personally.

At the SALP meeting you should be prepared to discuss our assessments and your plans to improve performance. The meeting is intended to be a candid dialogue wherein any comments you may have regarding our report are discussed. Additionally, you may provide written comments within thirty days after the meeting. Your comments, a summary of our meeting, and my disposition of your comments will be issued as the Final SALP Report.

In accordance with Section 2.790 of the NRC's "Rules of Practice," Part 2, Title 10, Code of Federal Regulations, a copy of this letter and the Initial SALP Board Report will be placed in the NRC's Public Document Room.

Should you have any questions concerning the SALP Report, we would be pleased to discuss them with you.

Sincerely,



A. Bert Davis
Regional Administrator

Enclosure: Initial SALP 9
Reports No. 50-315/90-01;
No. 50-316/90-01

cc w/enclosure:

J. H. Sniezek, DEDR
T. E. Murley, Director, NRR
K. M. Carr, Chairman
K. C. Rogers, Commissioner
J. R. Curtiss, Commissioner
F. J. Remick, Commissioner

NOV 15 1990

Indiana Michigan Power Company

3

Distribution (Continued)

T. G. Colburn, NRR Senior Project Manager
R. C. Pierson, NRR Director, Project Directorate III-I
J. Lieberman, Director, Office of
Enforcement
E. W. Brach, NRR
M. L. Dapas, NRR
C. F. Holden, NRR
R. L. Wharton, NRR
RIII PRR
State Liaison Officer, State
of Michigan
INPO
L. A. Reyes, RII
L. R. Greger, RIII
M. J. Pearson, RIII
L. L. Cox, RIII
RIII Files

