

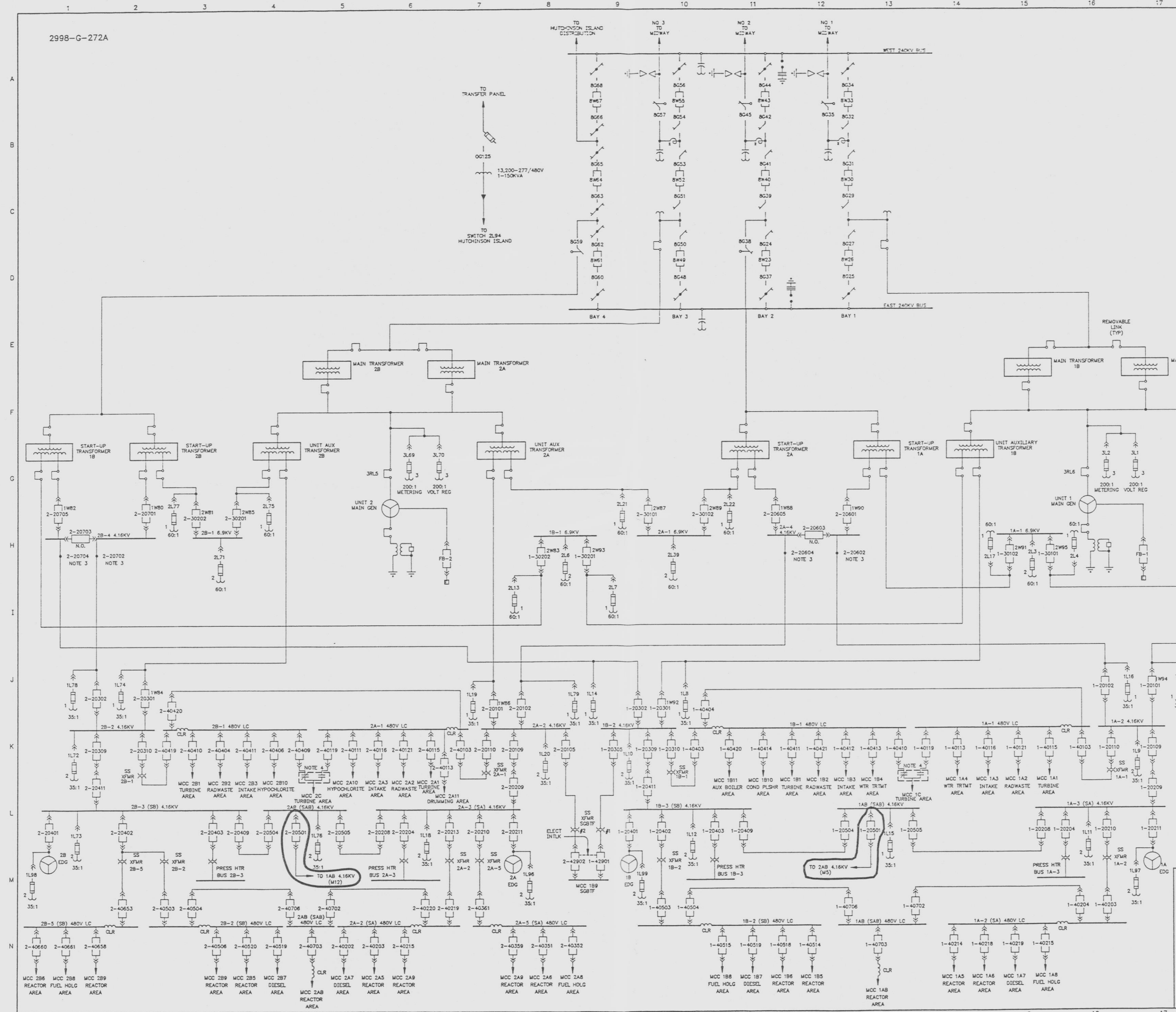
2998-G-272A

REVISIONS					
NO	DATE	DESCRIPTION	BY	CHK	APPROVED
1	8-18-82	ADDED: (L18) NOTE DELETED: (A9,A11,A12) SWAYD GND SWITCHES PER PCM 415-291M	LEL	DER	RFM WJ EJA
2	9-22-82	ADDED: (L4,L13) BREAKER #2-20501 & 1-20501 PER PCM 028-190 & 290-289	FS	DER	RFM WJ EJA

- NOTES:**
- THIS DRAWING IS A COMBINATION OF UNIT 1 AND 2 MAIN AND AUXILIARY ONE LINE DIAGRAMS AND DEPICTS ALL BUSES DOWN TO 480V LOAD CENTER LEVEL WITH THE BREAKER/DISCONNECT SWITCH NUMBERS.
 - FOR SPECIFIC DETAILS AND RATINGS OF EQUIPMENT, REFER TO THE SPECIFIC PLANT DRAWINGS REFERENCED BELOW.
 - TERMINATION CABINET ONLY
 - AUTOMATIC TRANSFER SWITCH

REFERENCE DRAWINGS:

MAIN ONE LINE DIAGRAM	8770-G-272
AUXILIARY ONE LINE DIAGRAM	8770-G-274
SWITCHYARD ONE LINE DIAGRAM	8770-G-417
MAIN ONE LINE DIAGRAM	2998-G-272
AUXILIARY ONE LINE DIAGRAM	2998-G-274 SH 1
AUXILIARY ONE LINE DIAGRAM	2998-G-274 SH 2



THE DESIGN INFORMATION FOR THE CHANGES SHOWN IN THIS REVISION HAS BEEN ENGINEERED BY FLORIDA POWER & LIGHT COMPANY.

NUCLEAR SAFETY RELATED IN PART ONLY

STATE OF FLORIDA
 ALAN L. SCHILDKRAUT
 #29986
 REGISTERED PE
 APPROVAL DATE: 02/15/1991

THIS DOCUMENT IS THE PROPERTY OF EBASCO SERVICES INCORPORATED. ITS USE IS EXPRESSLY RESTRICTED BY THE TERMS OF THE CONTRACT, DATED AS OF AUGUST 10, 1988 BETWEEN EBASCO SERVICES INCORPORATED AND FLORIDA POWER & LIGHT COMPANY.

FLORIDA POWER & LIGHT COMPANY
 ST LUCIE PLANT
 1978 - 890 MW INSTALLATION - UNIT 1
 1983 - 890 MW EXTENSION - UNIT 2
COMBINED MAIN AND AUXILIARY ONE LINE DIAGRAM

EBASCO SERVICES INCORPORATED	
SCALE: NONE	APPROVED: DATE: 2/15/91
DIV: ELECTRICAL	ALAN L. SCHILDKRAUT
DR: D. MOYER	2998-G-272A
CH: J. JACQUES	WJ WL

9607170092-134

D

2998-G-272A