

FIGURE 5A

MINIMUM SPATIAL SEPARATION FOR CABLE TRAYS & CONDUITS

* WITHIN CABLE VAULT
NTS

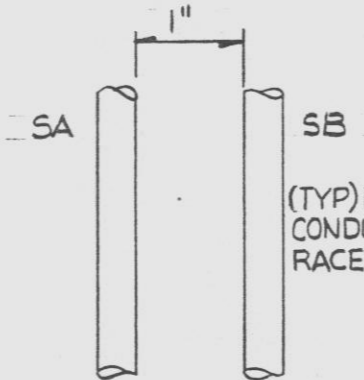


FIGURE 5B

ENCLOSED RACEWAY SEPARATION OUTSIDE OF CABLE HAZARD AREA (SEE 5.1 FOR DEF OF CABLE HAZARD AREA)

NTS

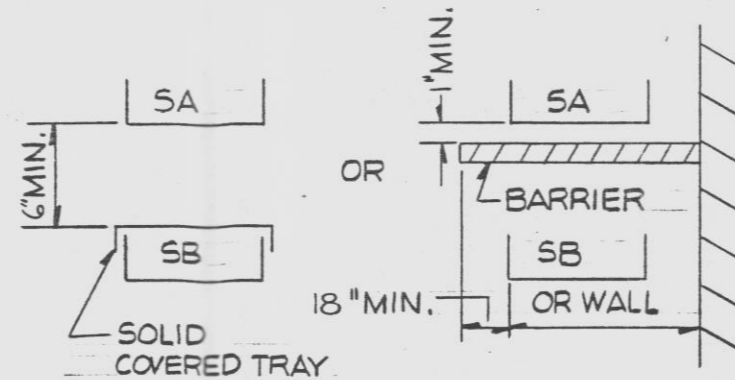


FIGURE 5C

ARRANGEMENT WHEN VERTICAL SPATIAL SEPARATION IS NOT MAINTAINED

NTS

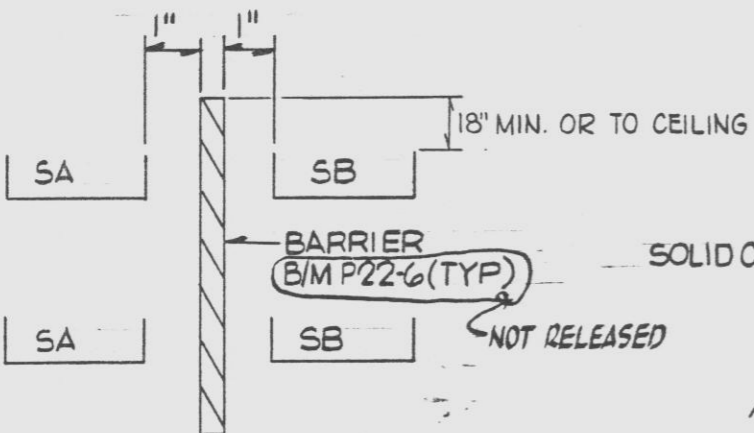


FIGURE 5D

ARRANGEMENT WHEN HORIZONTAL SPATIAL SEPARATION IS NOT MAINTAINED

NTS

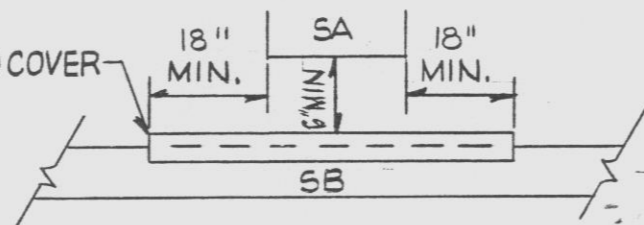


FIGURE 5E

ARRANGEMENT FOR REDUNDANT CABLE TRAY CROSSINGS WHERE VERTICAL SPATIAL SEPARATION IS NOT MAINTAINED

NTS

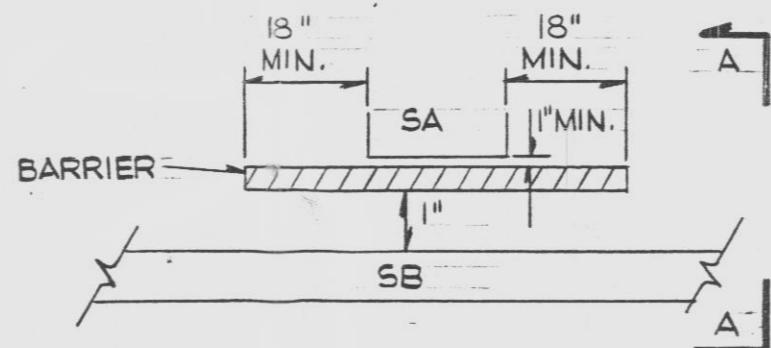


FIGURE 5F

ARRANGEMENT FOR REDUNDANT CABLE TRAY CROSSINGS WHERE VERTICAL SPATIAL SEPARATION IS NOT MAINTAINED

NTS

NOTES

1. ALL DIMENSIONS SHOWN ARE MINIMUM.
2. RACEWAYS INDICATED AS SA & SB REPRESENT REDUNDANT ESP MEASUREMENT CHANNEL OR SEGREGATED SYSTEMS RACEWAY.
3. REFER TO PARAGRAPH 5.0 DWG. 2998-B-328.
4. THE SEPARATION CRITERIA OF FIGURES 5A THRU 5F ARE MINIMUM ALLOWABLE OUTSIDE CABLE HAZARD AREAS WHICH REQUIRE ESSE CONCURRENCE.
5. FIRE RETARDANT BARRIERS SHALL BE 1/2 INCH JOHNS-MANVILLE MARINITE 3G. ALL ALTERNATE METHODS REQUIRE ENGINEERING APPROVAL PRIOR TO IMPLEMENTATION.
6. DISTANCE "L" SHALL BE (1'-0") IN CABLE SPREADING AREA AND 3'-0" IN GENERAL PLANT AREAS.

NOT RELEASED

INCHES
CM.

8				4			
7				3			
6				2			
5				1			
REV	DATE	BY	APPROVED	REV	DATE	BY	APPROVED

EBASCO SERVICES INCORPORATED
DIV. ELEC. DR. GJZ
CH. R. BAIRD
DATE NOV. 17, 1978

FLORIDA POWER & LIGHT COMPANY
ST. LUCIE PLANT-UNIT 2
ELECTRICAL GENERAL
INSTALLATION NOTES

2998-B-271
SHEET 5-3

INCHES
CM.

9607170092-130

D

2998-B-271 SH.5-3