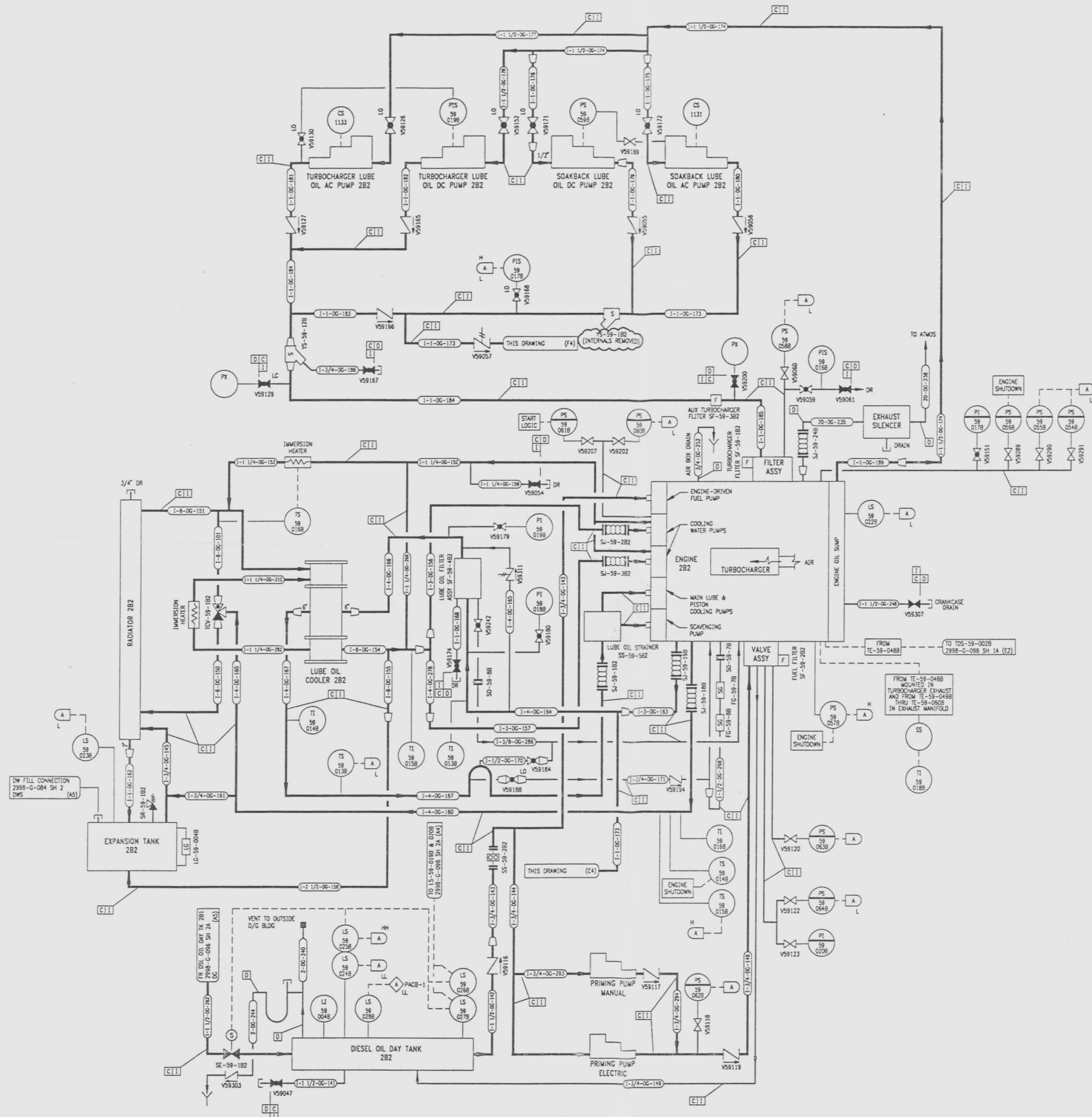


2998-G-096
SH 2B

REVISIONS					
NO	DATE	DESCRIPTION	BY	CHK	APPROVED
6	7/24/55		CAC	DWC	
2998-G-096-257 RETURN					
7	11/1/57		PAB		
REV. 15-59-182 TO SHOW INTERNALS REMOVED (4)					



NOTE
LOCAL ALARMS ARE GROUPED ON A LOCAL PANEL.
THE LOCAL PANEL HAS AN ANNUNCIATOR IN THE
CONTROL ROOM ON RTG201.

REFERENCE DRAWINGS

PIPE VALVE & INSTRUMENT SYMBOLS	2998-C-078 SH 100
VALVE LIST	2998-A-051
LINE LIST	2998-B-052
VALVE NUMBER OPERATIONAL NUMBER INDEX	2998-B-057A
INSTRUMENT INSTALLATION DETAILS	2998-B-231
INSTRUMENT LIST	2998-B-270C

NOTE:
THIS DRAWING IS MADE FROM REV. 5
OF DRAWING 2998-G-096 SH 2

REVISION OF THIS DRAWING MAY REQUIRE UPDATE OF
THE FOLLOWING DOCUMENT: FSAR FIGURE 9.5-8

**NUCLEAR SAFETY RELATED
IN PART ONLY**

FLORIDA POWER & LIGHT COMPANY
ST LUCIE PLANT
1983 - 890 MW EXTENSION - UNIT 2
FLOW DIAGRAM
EMERGENCY DIESEL GENERATOR SYSTEM
DIESEL ENGINE 2B2

SCALE: NONE	APPROVAL	DATE:
DWG: MDC		2998-G-096
CHK: J. C. GIBBY		7
CHK: C. W. S. MUM		28

9607170092-109 **D**

2998-G-096 SH 2B