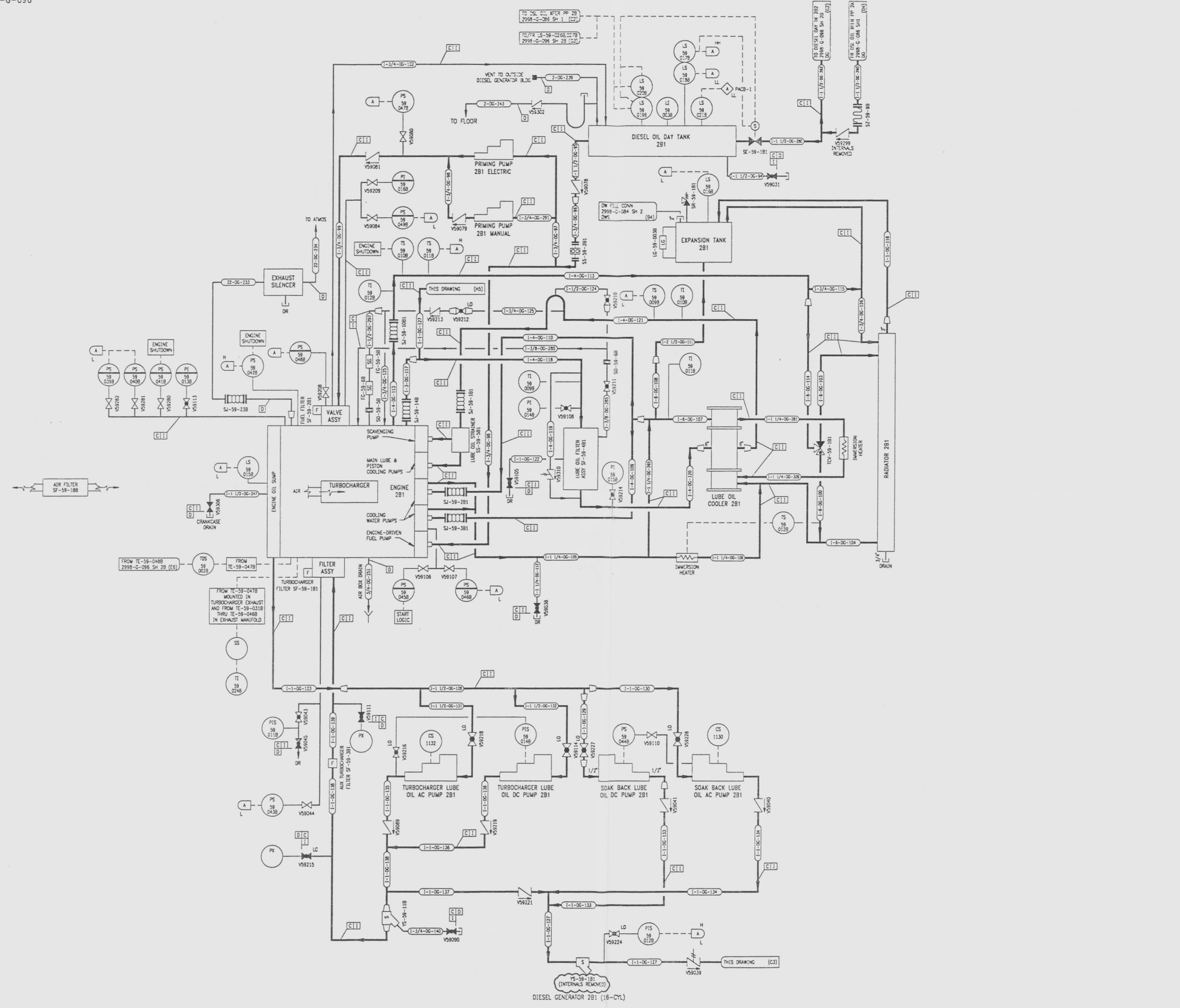


2998-G-096
SH 2A

REVISIONS				
NO	DATE	DESCRIPTION	BY	APPROVED
6	7/24/95		DM	RR
200-SM-34-227 REVISION				
7	1/1/97		PAB	H
200-SM-34-227 REV 95-58-181 TO SHOW INTERNALS REMOVED (-4)				



NOTE
LOCAL ALARMS ARE GROUPED ON A LOCAL PANEL. THE LOCAL PANEL HAS AN ANNUNCIATOR IN THE CONTROL ROOM ON RTGB 201.

REFERENCE DRAWINGS	
PIPE, VALVE & INSTRUMENT SYMBOLS	2998-G-078 SH 100
VALVE LIST	2998-A-051
LINE LIST	2998-B-052
VALVE OPERATIONAL NUMBER INDEX	2998-B-057A
INSTRUMENT INSTALLATION DETAILS	2998-B-231
INSTRUMENT LIST	2998-B-270C

NOTE:
THIS DRAWING IS MADE FROM REV. 5
OF DRAWING 2998-G-096 SH 2

REVISION OF THIS DRAWING MAY REQUIRE UPDATE OF THE FOLLOWING DOCUMENT: FSAR FIGURE 9.5-8

**NUCLEAR SAFETY RELATED
IN PART ONLY**

FLORIDA POWER & LIGHT COMPANY
ST. LUCIE PLANT
1883 - 890 MW EXTENSION UNIT 2
FLOW DIAGRAM
EMERGENCY DIESEL GENERATOR SYSTEM
DIESEL ENGINE 2B1

RAYTHEON ENGINEERS & CONSTRUCTORS, INC.	
SCALE: NONE	APPROVAL
DATE: 2998-G-096	DATE: 7/24/95
DR: SDC	DR: R. CHEFF
CH: SDC/NSD/AM	CH: SDC/NSD/AM
SHEET 7	SHEET 7

2998-G-096 SH2A

960770092-108