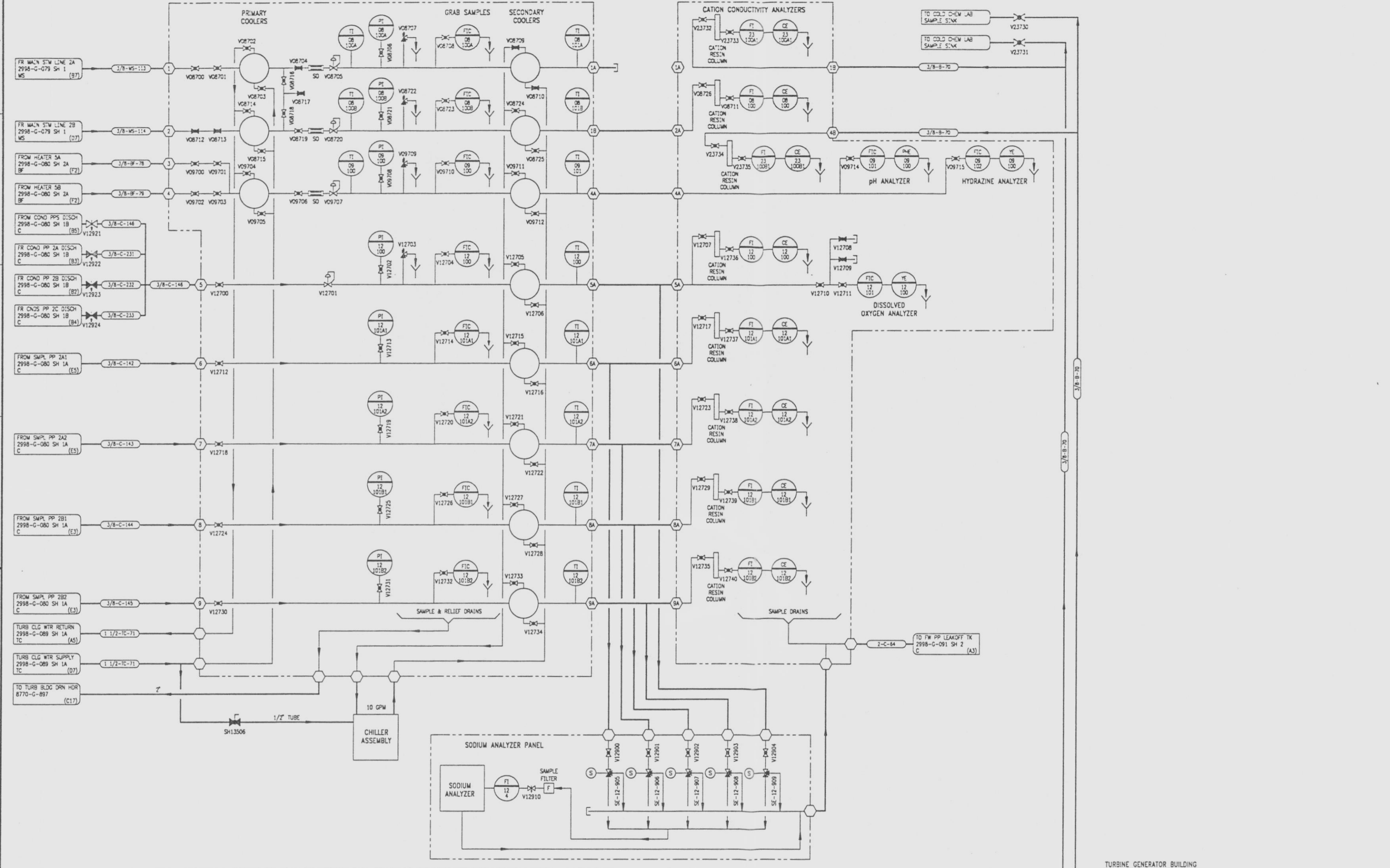


2998-G-092  
SH 2

REVISIONS				
NO	DATE	DESCRIPTION	BY	APPROVED
2	2-11-83	REVISED TO SHOW	BS	BS



NOTE  
THE STEAM GENERATOR BLOWDOWN SAMPLING PANEL IS LOCATED IN THE UNIT 2 RAB. THE REMAINING EQUIPMENT IS LOCATED IN THE COLD CHEMISTRY LABORATORY IN THE UNIT 1 TURBINE BUILDING.

- REFERENCE DRAWINGS
- PIPE, VALVE AND INSTRUMENT SYMBOLS 2998-G-078 SH 100
  - VALVE LIST 2998-A-051
  - LINE LIST 2998-B-052
  - VALVE OPERATOR NUMBER INDEX 2998-B-057A
  - INSTRUMENT INSTALLATION DETAILS 2998-B-231
  - INSTRUMENT LIST 2998-B-270C
  - MISCELLANEOUS SAMPLING SYSTEM SH 1 2998-G-092 SH 1
  - CHILLER ASSEMBLY 2998-222
  - CHEMICAL ANALYZER FLOW DIAGRAM 2998-227
  - SODIUM ANALYZING SYSTEM FLOW DIAGRAM 2998-14628

NOTE:  
THIS DRAWING IS MADE FROM REV. 1  
OF DRAWING 2998-G-092 SH 2

REVISION OF THIS DRAWING MAY REQUIRE UPDATE OF THE FOLLOWING DOCUMENTS: FSAR FIGURE 9.3-4

FLORIDA POWER & LIGHT COMPANY  
ST LUCIE PLANT  
1983 - 890 MWe EXTENSION - UNIT 2  
FLOW DIAGRAM  
MISCELLANEOUS SAMPLING SYSTEMS

RATHGON ENGINEERS & CONSTRUCTORS, INC.  
SCALE: NONE  
DATE: 2998-G-092  
SHEET 2

2998-G-092 SH2

9607170092-104

D