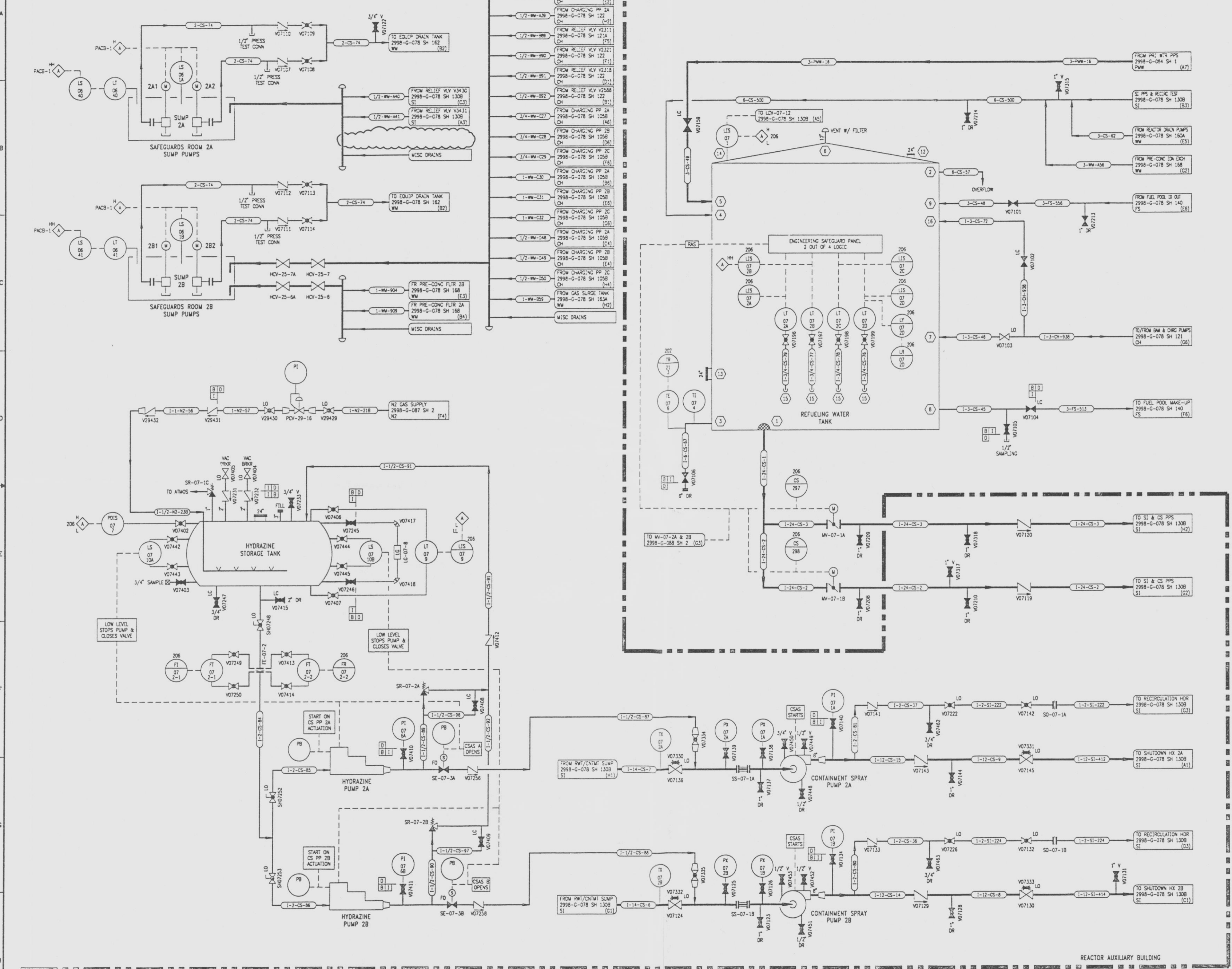


2998-G-088
SH 1

REVISIONS				
NO	DATE	DESCRIPTION	BY	APPROVED
23	7/24/75		OW	RR
200-LSM-84-202 RE-DRAWN				
24	11/17/75	DELETE REFERENCE AND LINE FROM V3507 AND V3438 (S1)	PAZ	JY



REFERENCE DRAWINGS

PIPE, VALVE & INSTRUMENT SYMBOLS	2998-G-078 SH 100
VALVE LIST	2998-A-051
LINE LIST	2998-B-052
VALVE OPERATIONAL NUMBER INDEX	2998-B-057A
INSTRUMENT INSTALLATION DETAILS	2998-B-231
INSTRUMENT LIST	2998-B-270C

NOTE: THIS DRAWING IS MADE FROM REV. 22 OF DRAWING 2998-G-088

REVISION OF THIS DRAWING MAY REQUIRE UPDATE OF THE FOLLOWING DOCUMENT: FSAR FIGURE 6.2-4.1

NUCLEAR SAFETY RELATED IN PART ONLY

FLORIDA POWER & LIGHT COMPANY
ST. LUCIE PLANT
1983 - 890 MW EXTENSION - UNIT 2
FLOW DIAGRAM
CONTAINMENT SPRAY AND
REFUELING WATER SYSTEMS

RAYTHEON ENGINEERS & CONSTRUCTORS, INC.

SCALE: NONE	APPROVAL	DATE:
DRW: MDC		2998-G-088
CHK: G. S. GATT		SHEET
DES: QUINN-DONAM		24

2998-G-088 SH. 1

9607170092-98

D