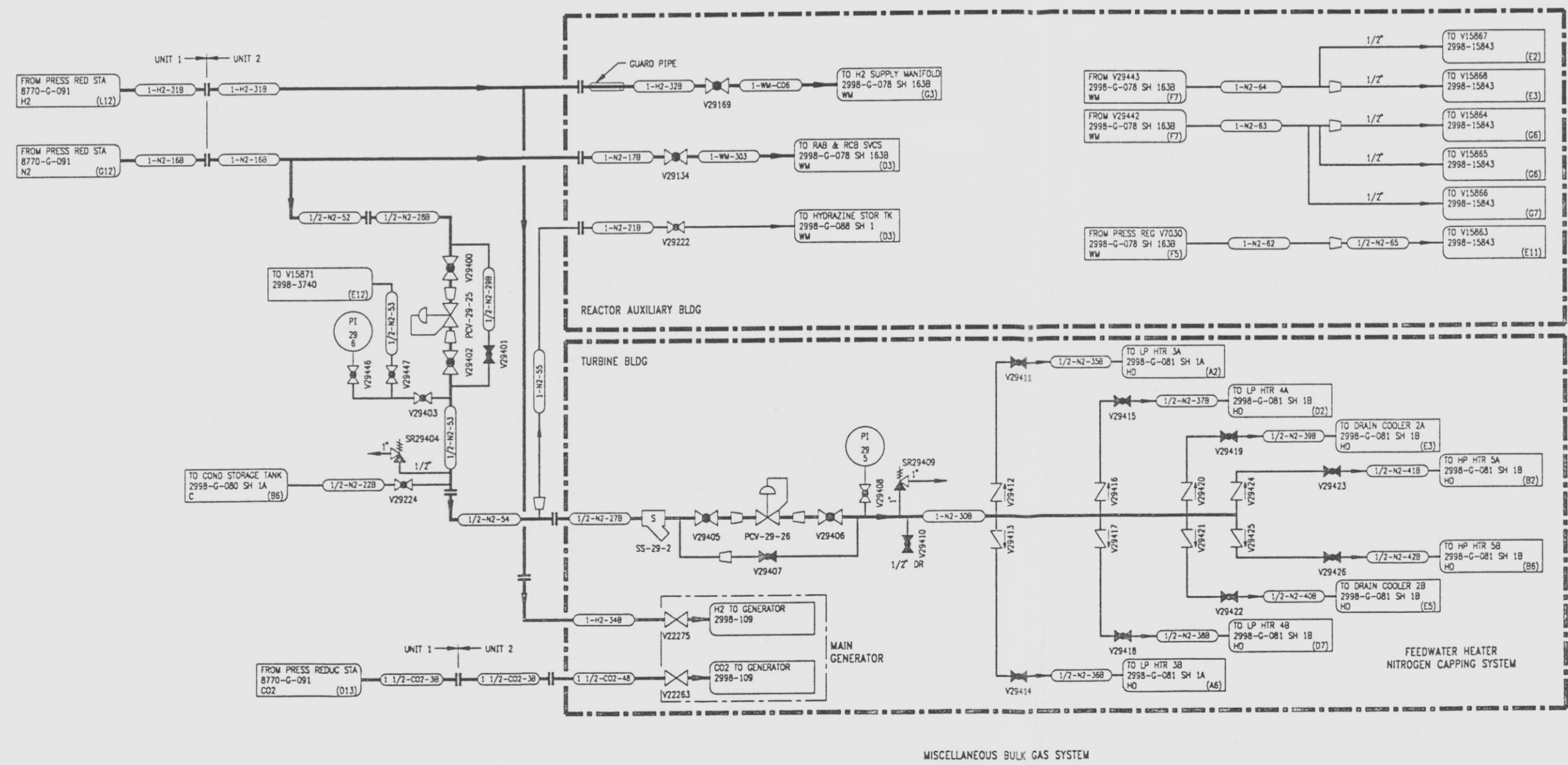
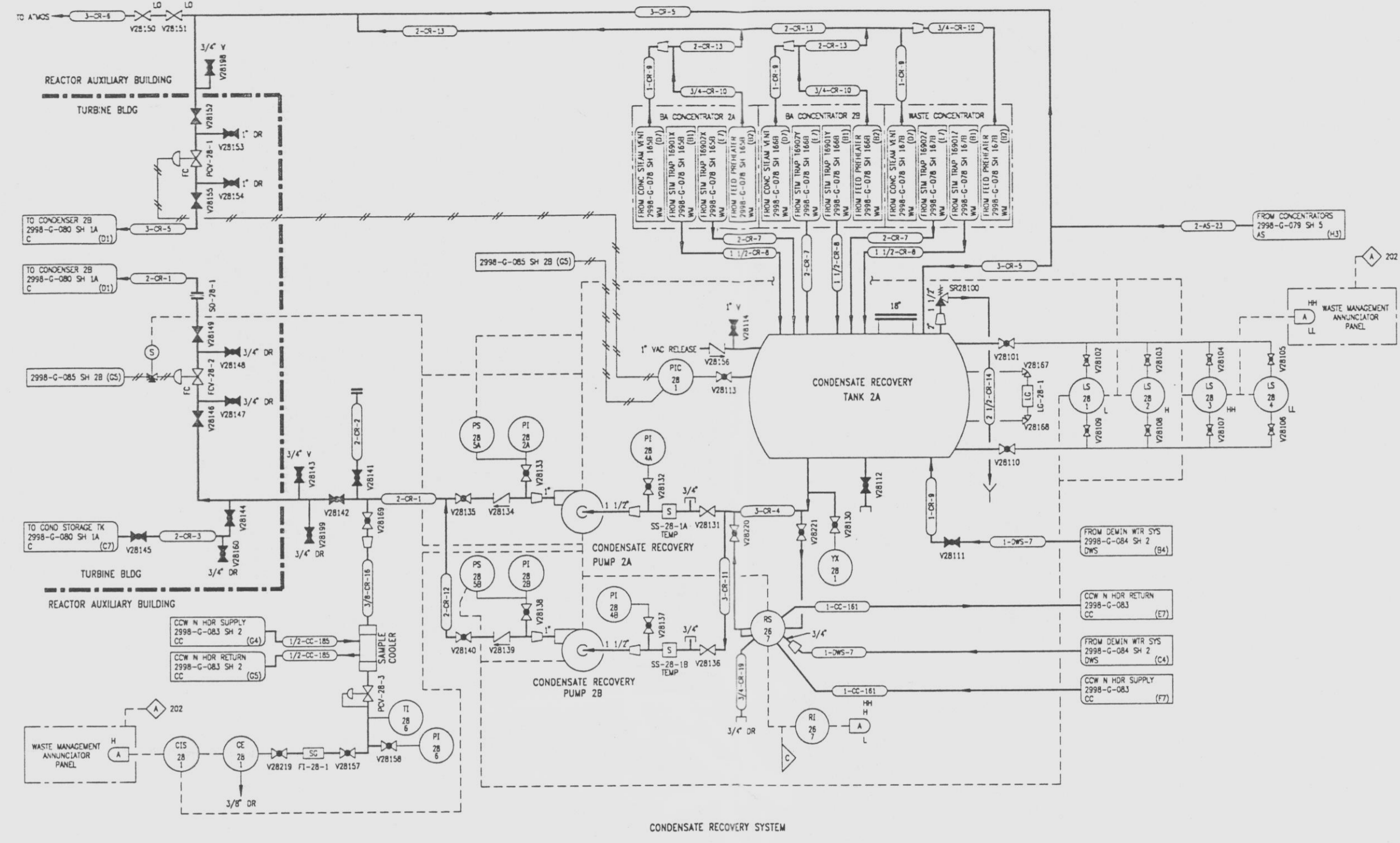


2998-G-087
SH 2

REVISIONS				
NO	DATE	DESCRIPTION	BY	APPROVED
20	11-14-15	REVISED	DAC	[Signature]
2002-SLV-14-012 REVISION				



REFERENCE DRAWINGS

PIPE, VALVE & INSTRUMENT SYMBOLS	2998-G-078 SH 100
VALVE LIST	2998-A-051
LINE LIST	2998-B-052
VALVE OPERATIONAL NUMBER INDEX	2998-B-052A
INSTRUMENT INSTALLATION DETAILS	2998-B-231
INSTRUMENT LIST	2998-B-270C
SAMPLE COOLER	2998-4585
RS-26-7	2998-12260

NOTE:
THIS DRAWING IS MADE FROM REV. 19
OF DRAWING 2998-G-087

REVISION OF THIS DRAWING MAY REQUIRE UPDATE OF THE FOLLOWING DOCUMENT: FSAR FIGURE 9.2-7

FLORIDA POWER & LIGHT COMPANY
ST LUCIE PLANT
1983 - 890 MW EXTENSION - UNIT 2
FLOW DIAGRAM
MISCELLANEOUS
SYSTEMS

SCALE	APPROVAL	DATE
None	[Signature]	2998-G-087
DR: P. CHARTER	[Signature]	SHEET
DC: DUNN/GAMM	[Signature]	20

2998-G-087 SH2

96077170092 97