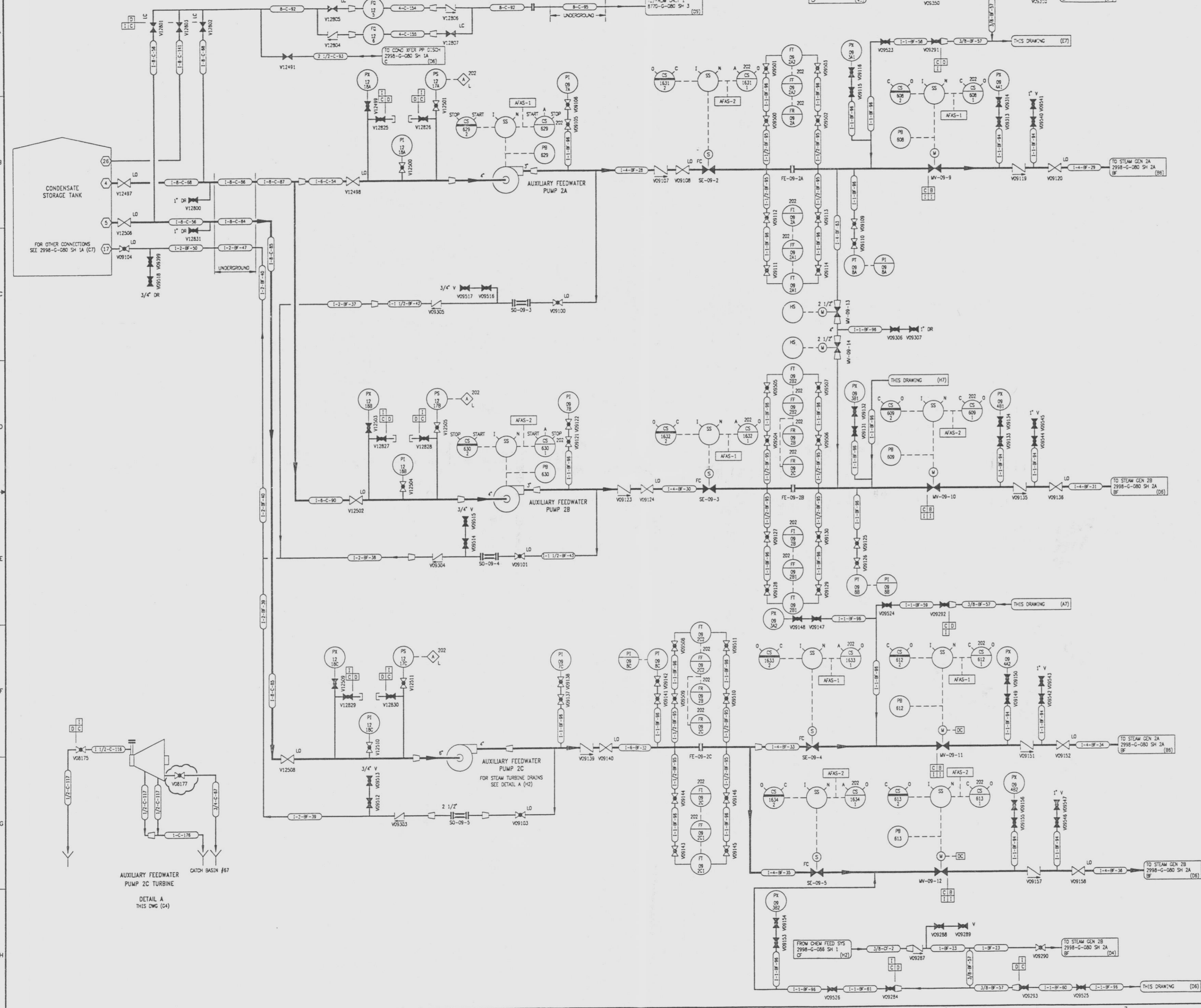


2998-G-080
SH 28

REVISIONS				
NO	DATE	DESCRIPTION	BY	APPROVED
26	7/14/95		DW	RR
27	4/1/96		JEM	RR
		202-S.M. 94-013		
		202-S.M. 94-013		
		REVISE (02) VALVE POSITION (V0117)		



REFERENCE DRAWINGS

PIPE, VALVE & INSTRUMENT SYMBOLS	2998-G-078 SH 100
VALVE LIST	2998-G-081
LINE LIST	2998-B-052
VALVE OPERATIONAL NUMBER INDEX	2998-B-051A
INSTRUMENT INSTALLATION DETAILS	2998-B-231
INSTRUMENT LIST	2998-B-270C

NOTE:
THIS DRAWING IS MADE FROM REV. 25
OF DRAWING 2998-G-080 SH 2

REVISION OF THIS DRAWING MAY REQUIRE UPDATE OF
THE FOLLOWING DOCUMENT: FSAR FIGURE 10.1-2b

**NUCLEAR SAFETY RELATED
IN PART ONLY**

FLORIDA POWER & LIGHT COMPANY
ST. LUCIE PLANT
1983 - 895 KW EXTENSION - UNIT 2
FLOW DIAGRAM
FEEDWATER & CONDENSATE
SYSTEMS

SCALE: NONE	APPROVAL	DATE
DW: JSC/D		2998-G-080
DR: J. BUCKLEY		SH 28
CH: J. BUCKLEY		27

2998-G-080 SH. 2B

96071700 92-77
D