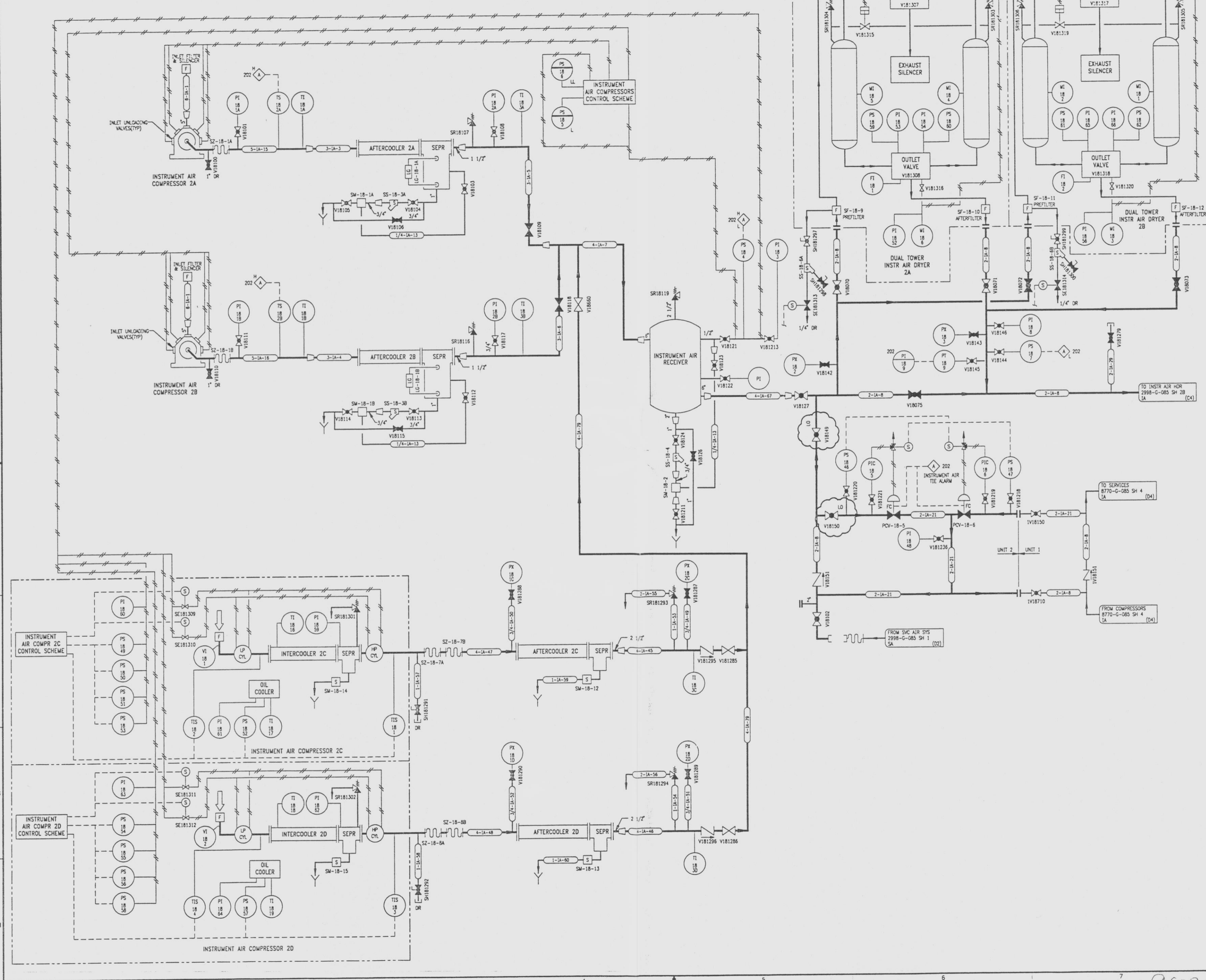


2998-G-085
SH 3

REVISIONS				
NO	DATE	DESCRIPTION	BY	CHK
19	7/24/95		CM	RR
2098-SW-24-027 REVISION				
20	4-2-96		CM	SH
2098-SW-24-027 ADD (2X 25) LG TO V18149 & V18150				



NOTES
 ALL LINES NOT LABELED ARE - 1/2-1A-12
 ALL LINES LABELED (3/4") ARE - 3/4-1A-11
 ALL LINES LABELED (1") ARE - 1-1A-10

REFERENCE DRAWINGS
 PIPE, VALVE & INSTRUMENT SYMBOLS 2998-G-078 SH 100
 VALVE LIST 2998-A-051
 LINE LIST 2998-B-052
 VALVE OPERATIONAL NUMBER INDEX 2998-B-057A
 INSTRUMENT INSTALLATION DETAILS 2998-B-231
 INSTRUMENT LIST 2998-B-270C
 1A COMPRESSORS 2998-18442
 1A COMPRESSORS 2C & 2D 2998-18460

NOTE:
 THIS DRAWING IS MADE FROM REV. 18
 OF DRAWING 2998-G-085 SH 3

REVISION OF THIS DRAWING MAY REQUIRE UPDATE OF
 THE FOLLOWING DOCUMENT: FSAR FIGURE 9.3-2a

FLORIDA POWER & LIGHT COMPANY ST LUCIE PLANT 1983 - 890 MW EXTENSION - UNIT 2		
FLOW DIAGRAM INSTRUMENT AIR SYSTEM		
RAYTHEON ENGINEERS & CONSTRUCTORS, INC.		
SCALE: NONE	APPROVAL	DATE:
DR: MCD		2998-G-085
CH: MCD		SHEET 3

9607170092-92

2998-G-085 SH. 3

D