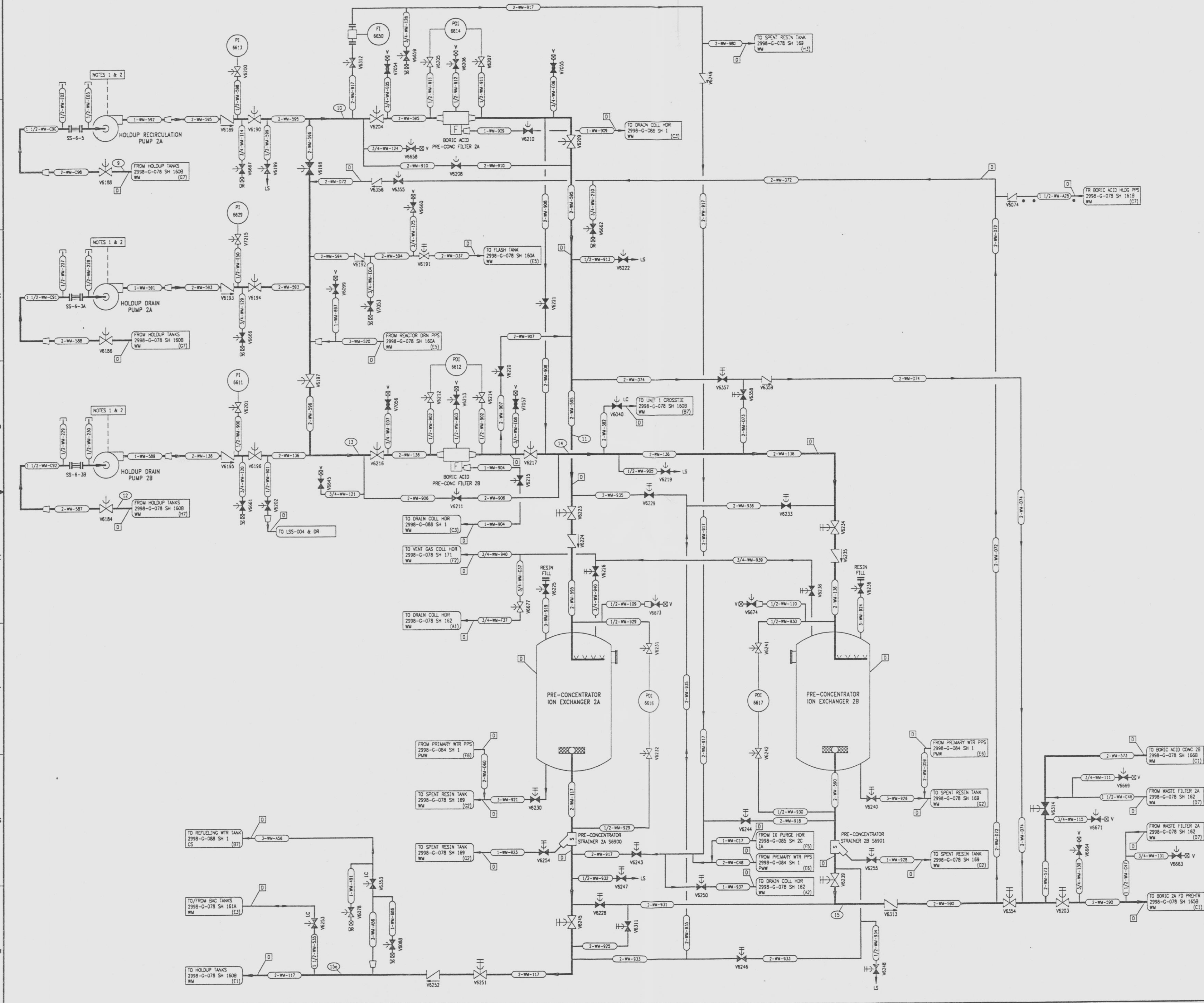


2998-G-078
SH 168

REVISIONS				
NO	DATE	DESCRIPTION	BY	APPROVED
3	7-24-98	REVISED FOR 2998-G-078 SH 168	C.G.	[Signature]



- NOTES
- HOLDUP PUMPS STOP ON HOLDUP TANK LOW LEVEL.
 - HOLDUP PUMPS STOP & START ON BORIC ACID CONCENTRATORS LEVEL SIGNAL.
 - LOCAL ALARMS ARE GROUPED ON SEVERAL LOCAL PANELS. EACH PANEL HAS AN ANNUNCIATOR ON THE CONTROL ROOM PANEL.

- REFERENCE DRAWINGS
- PIPE, VALVE & INSTRUMENT SYMBOLS 2998-G-078 SH 100
 - VALVE LIST 2998-A-051
 - LINE LIST 2998-B-052
 - VALVE OPERATIONAL NUMBER INDEX 2998-B-057A
 - INSTRUMENT INSTALLATION DETAILS 2998-B-231
 - INSTRUMENT LIST 2998-B-232

NOTE:
THIS DRAWING IS MADE FROM REV. 2 OF DRAWING 2998-G-078 SH 168.

REVISION OF THIS DRAWING MAY REQUIRE UPDATE OF THE FOLLOWING DOCUMENTS: FSAR FIGURE 11.2-2

FLORIDA POWER & LIGHT COMPANY
ST. LUCIE PLANT
1983 - 890 WME EXTENSION - UNIT 2
FLOW DIAGRAM
WASTE MANAGEMENT
SYSTEM

SCALE: NONE	APPROVAL:	DATE:
DR: MECH	[Signature]	2998-G-078
DR & CHECKED:	[Signature]	SHEET
CHK: BERGENDL	[Signature]	168
		3

2998-G-078 SH 168

9607170098-65

D