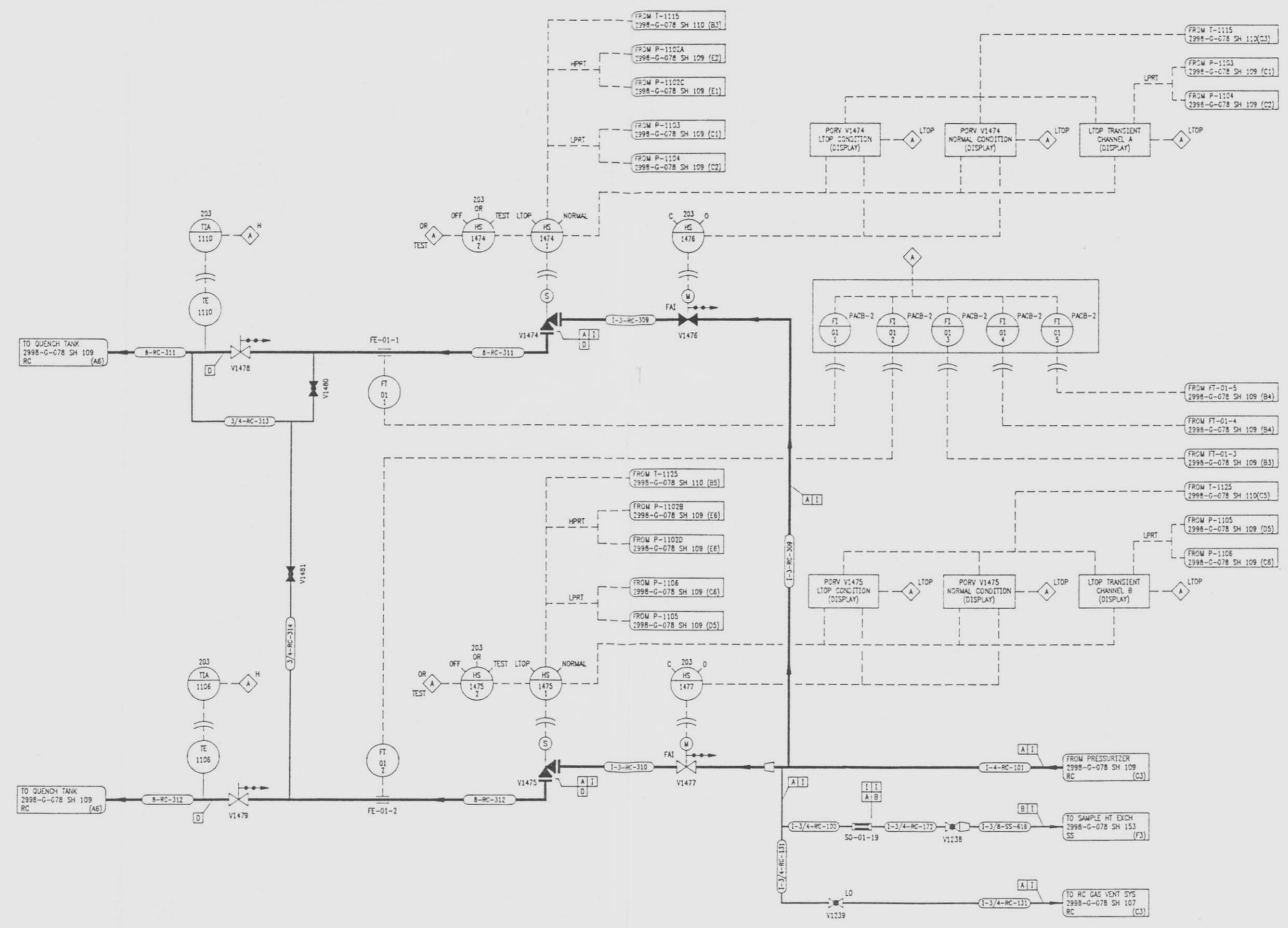


2998-G-078
SH 108

| REVISIONS | | | | |
|-----------|--------|-----------------------|----|-------------|
| NO. | DATE | DESCRIPTION | BY | APPROVED |
| 2 | 7-2-98 | 208-208-24-242 REPAIR | BB | [Signature] |



REFERENCE DRAWINGS
 PIPE, VALVE & INSTRUMENT SYMBOLS 2998-G-078 SH 100
 VALVE LIST 2998-A-051
 LINE LIST 2998-B-052
 VALVE OPERATIONAL NUMBER INDEX 2998-B-053A
 INSTRUMENT INSTALLATION DETAILS 2998-B-053B
 INSTRUMENT LIST 2998-B-053C

NOTE:
 THIS DRAWING IS MADE FROM REV. 1 OF DRAWING 2998-G-078 SH 108

REVISION OF THIS DRAWING MAY REQUIRE UPDATE OF THE FOLLOWING DOCUMENT: FSAR FIGURE 5.1-46

**NUCLEAR SAFETY RELATED
 IN PART ONLY**

FLORIDA POWER & LIGHT COMPANY
 ST. LUCIE PLANT
 1983 - 890 MW EXTENSION - UNIT 2
 FLOW DIAGRAM
 REACTOR COOLANT
 SYSTEM

RAYTHEON ENGINEERS & CONSTRUCTORS, INC.
 SCALE: NONE
 DR. MECH. [Signature] APPROVAL DATE: 2998-G-078
 DR. B. BULL [Signature] SHEET 108
 CH. [Signature] SHEET 108

2998-G-078 SH.108

9607170092 - 29

D