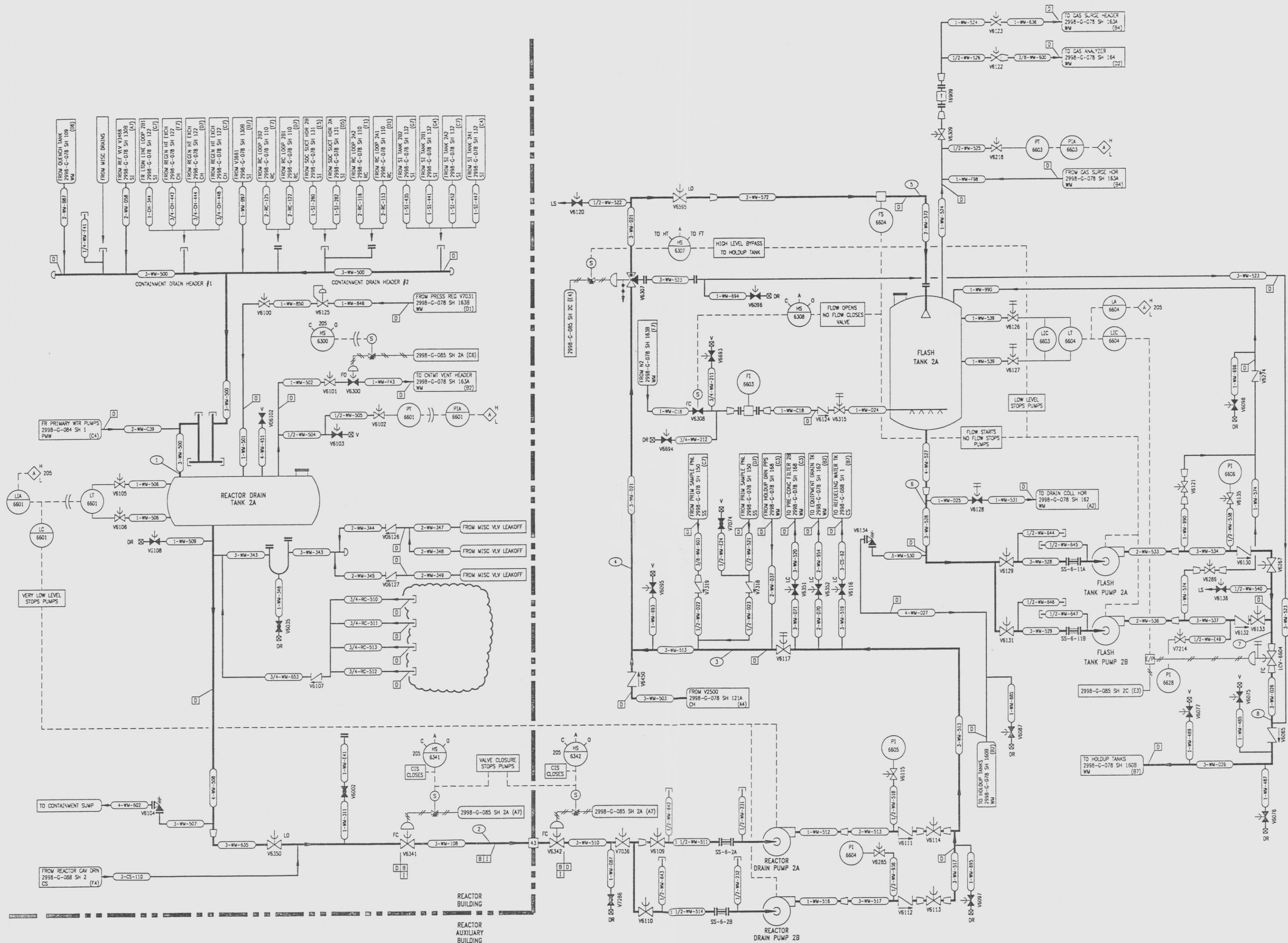


2998-G-078
SH 160A

REVISIONS				
NO.	DATE	DESCRIPTION	BY	APPROVED
3	7/24/95		EB	
202-SW-34-021 REDRAWN				
4	11/14/95		CM	
FROM 2998-G-078 SH 163A CONTINUATIONS				



REFERENCE DRAWINGS
 PIPE, VALVE & INSTRUMENT SYMBOLS 2998-G-078 SH 100
 VALVE LIST 2998-A-051
 LINE LIST 2998-B-052
 VALVE OPERATIONAL NUMBER INDEX 2998-B-057A
 INSTRUMENT INSTALLATION DETAILS 2998-B-211
 INSTRUMENT LIST 2998-B-270C

NOTE:
 THIS DRAWING IS MADE FROM REV. 2
 OF DRAWING 2998-G-078 SH 160

REVISION OF THIS DRAWING MAY REQUIRE UPDATE OF
 THE FOLLOWING DOCUMENTS: FSAR FIGURE 11.2-1

**NUCLEAR SAFETY RELATED
 IN PART ONLY**

FLORIDA POWER & LIGHT COMPANY
 ST. LUCIE PLANT
 1983 - 890 MW EXTENSION - UNIT 2
**FLOW DIAGRAM
 WASTE MANAGEMENT
 SYSTEM**

RAYTHEON ENGINEERS & CONSTRUCTORS, INC.

SCALE: NONE	APPROVAL	DATE:
DR: MECH		2998-G-078
CH: SCHEIDT		SHEET 160A

2998-G-078 SH 160A

9607170092-51

D