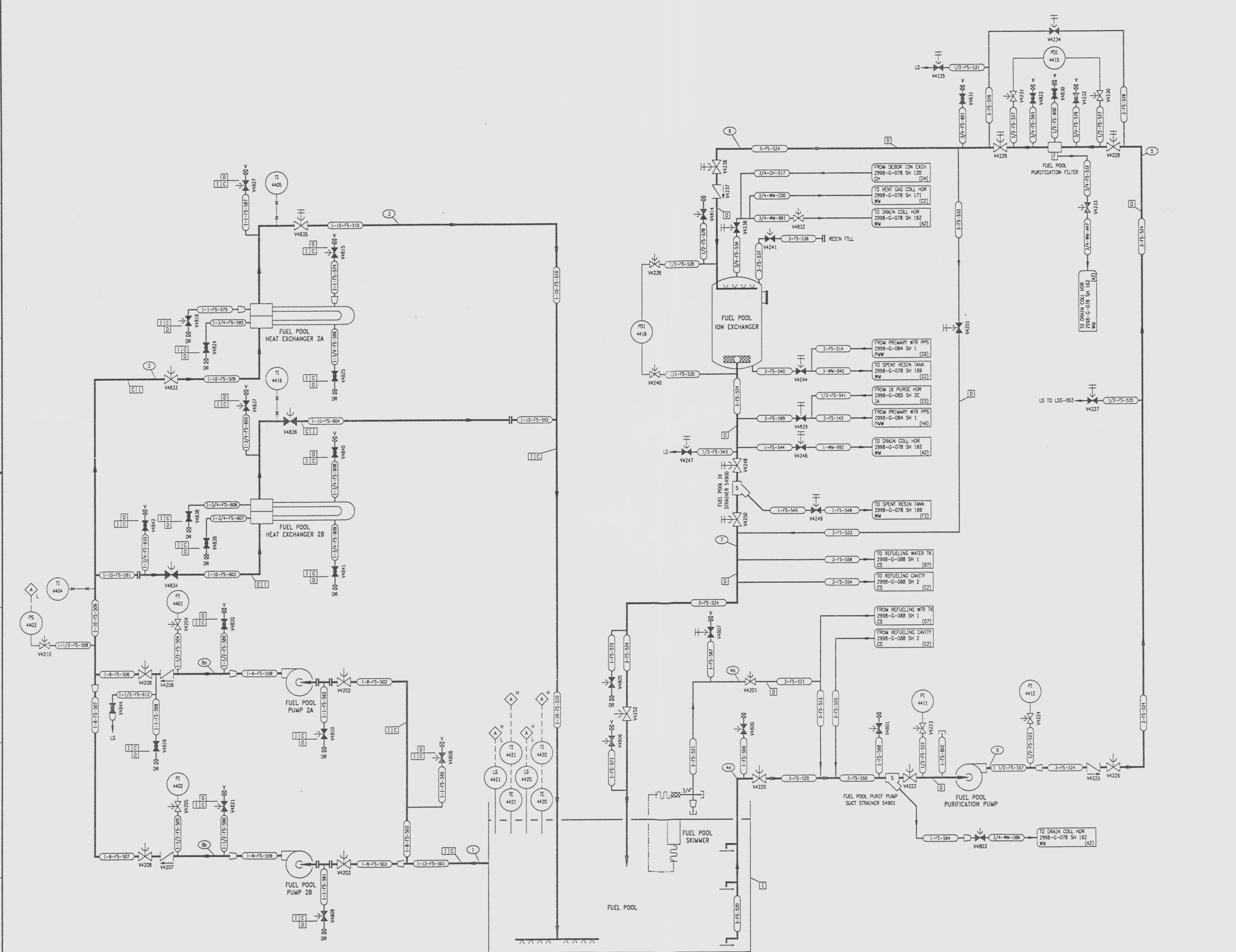


2998-G-078  
SH 140

REVISIONS				
NO	DATE	DESCRIPTION	BY	APPROVED
5	7-14-87		BB	
2998-SW-94-002: RECLAIM				



- NOTES
1. THE FUEL POOL PURIFICATION SUCTION LINE (3-FS-520) HAS A 1/4" DIAMETER SYPHON BREAKER HOLE LOCATED 1'-2 1/2" BELOW THE NORMAL POOL WATER LEVEL.
  2. THE FUEL POOL COOLING RETURN LINE (1-10-FS-510) HAS A 1/2" DIAMETER SYPHON BREAKER HOLE LOCATED 1'-0" BELOW NORMAL POOL WATER LEVEL.
  3. THE FUEL POOL PURIFICATION RETURN LINE (3-FS-524) DOES NOT REQUIRE A SYPHON BREAKER SINCE THE PIPE TERMINATES AT A SUBMERGENCE ELEVATION THAT WOULD PRECLUDE EXCESSIVE DRAINAGE BY SYPHON ACTION.

- REFERENCE DRAWINGS
- |                                  |                   |
|----------------------------------|-------------------|
| PIPE, VALVE & INSTRUMENT SYMBOLS | 2998-G-078 SH 100 |
| VALVE LIST                       | 2998-A-051        |
| LINE LIST                        | 2998-B-052        |
| VALVE OPERATIONAL NUMBER INDEX   | 2998-B-057A       |
| INSTRUMENT INSTALLATION DETAILS  | 2998-B-231        |
| INSTRUMENT LIST                  | 2998-B-270C       |

NOTE:  
THIS DRAWING IS MADE FROM REV. 4  
OF DRAWING 2998-G-078 SH 140.

REVISION OF THIS DRAWING MAY REQUIRE UPDATE OF  
THE FOLLOWING DOCUMENTS: FSAR FIGURE 9.1-6

**NUCLEAR SAFETY RELATED  
IN PART ONLY**

FLORIDA POWER & LIGHT COMPANY  
ST. LUCIE PLANT  
1983 - 890 MW EXTENSION - UNIT 2  
FLOW DIAGRAM  
FUEL POOL  
SYSTEM

RAYTHEON ENGINEERS & CONSTRUCTORS, INC.		
SCALE: NONE	APPROVAL:	DATE:
DR: MECH		2998-G-078
CHK: M. J. WILSON		SH 140
		5

2998-G-078 SH 140

9607170098-46

D