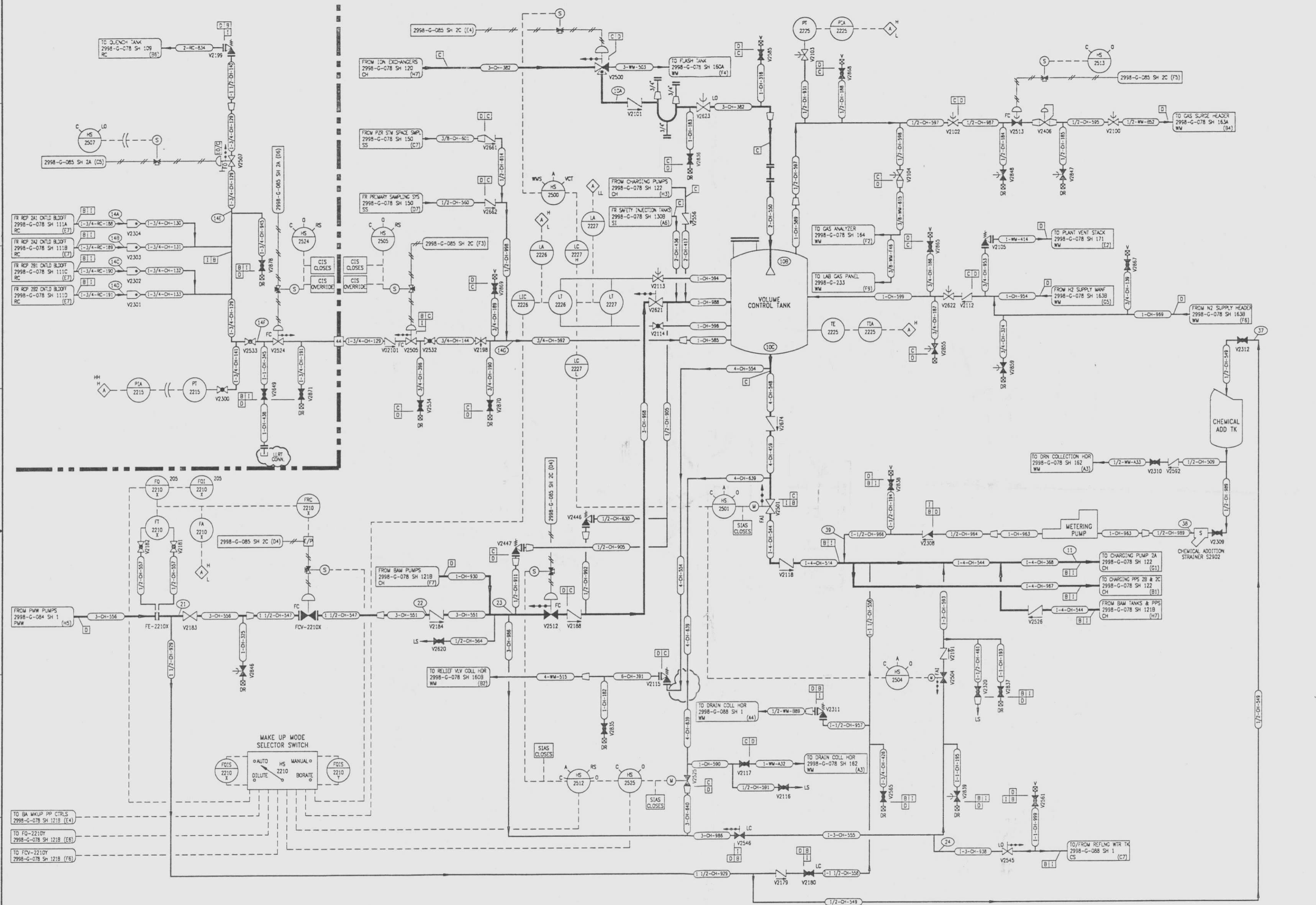


2998-G-078
SH 121A

REVISIONS				
NO	DATE	DESCRIPTION	BY	APPROVED
17	7/24/95		JCC	
18	1-8-96	REVISED TO SHOW PIPING	CM	



NOTE
BATCHING SWITCH FQ15-2210X CLOSSES FCV-2210X AT END OF DILUTE BATCH.

- REFERENCE DRAWINGS
- PIPING, VALVES & INSTRUMENT SYMBOLS 2998-G-078 SH 100
 - VALVE LIST 2998-A-051
 - LINE LIST 2998-B-052
 - VALVE OPERATIONAL NUMBER INDEX 2998-B-057A
 - INSTRUMENT INSTALLATION DETAILS 2998-B-231
 - INSTRUMENT LIST 2998-B-230C

NOTE:
THIS DRAWING IS MADE FROM REV. 18
OF DRAWING 2998-G-078 SH 121A

REVISION OF THIS DRAWING MAY REQUIRE UPDATE OF THE FOLLOWING DOCUMENT: FSAR FIGURE 9.3-5b

**NUCLEAR SAFETY RELATED
IN PART ONLY**

FLORIDA POWER & LIGHT COMPANY
ST. LUCIE PLANT
1983 - 890 MW EXTENSION - UNIT 2
FLOW DIAGRAM
CHEMICAL & VOLUME CONTROL
SYSTEM

RAYTHEON ENGINEERS & CONSTRUCTORS, INC.

SCALE: NONE	APPROVAL	DATE:
DR: J. G. ...		2998-G-078
CH: D. ...		SHEET 121A
		18

2998-G-078 SH 121A

9607170092 -38

D