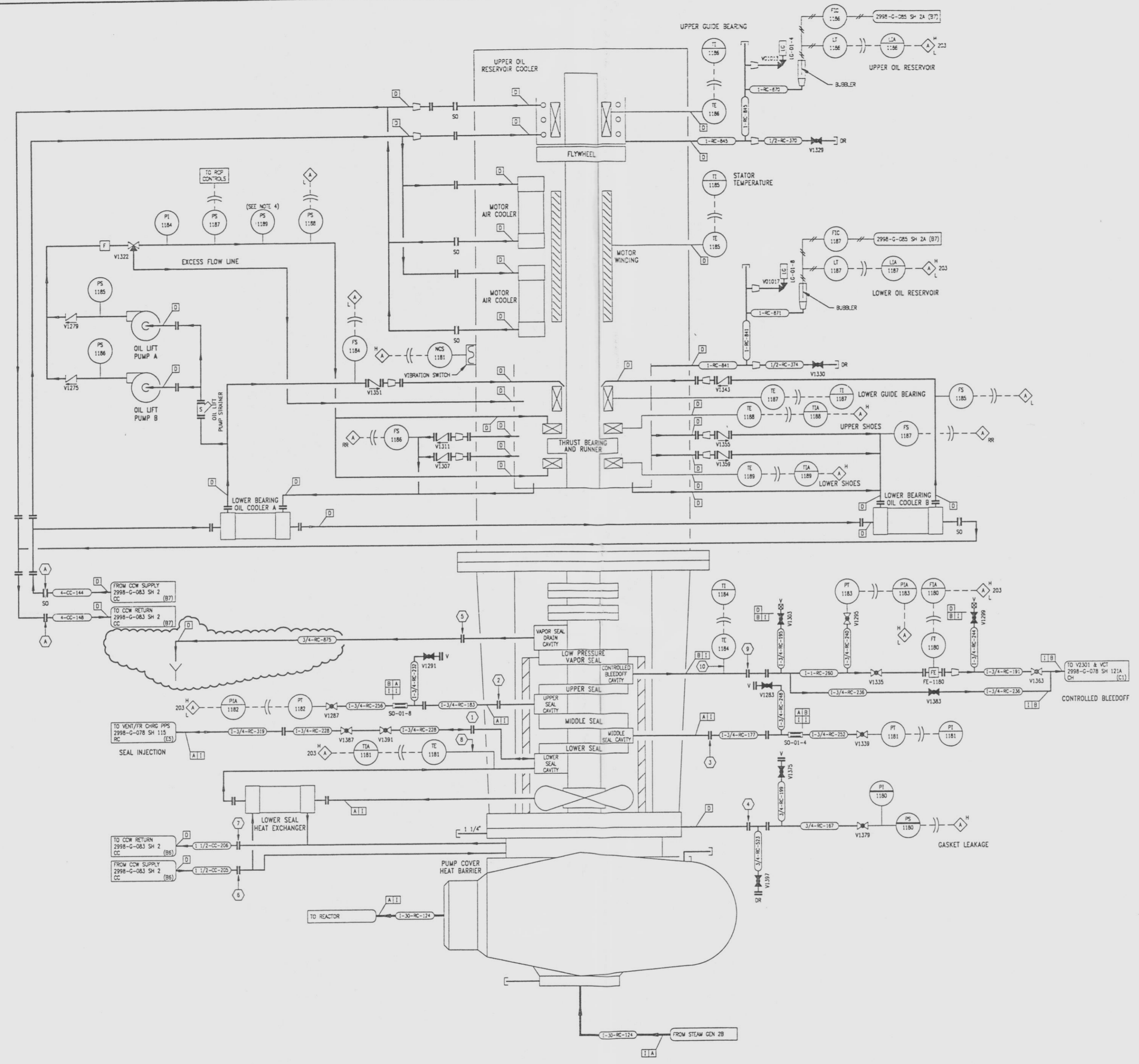


2998-G-078
SH 1110

REVISIONS				
NO	DATE	DESCRIPTION	BY	APPROVED
5	7/24/95	202-SUM-84-027 REGRAB	JCC	[Signature]
6	12/16/95	ADD (E-1) DRAIN DEL (E-1) CONTINUATION REV (E-1) LINE NUMBER	OW	[Signature]



- NOTES
- ONE OF SIX STATOR TEMPERATURE ELEMENTS CHOSEN DURING PUMP TEST WILL BE MONITORED.
 - LOCAL PRESSURE TAPS ARE SUPPLIED IN THE PUMP SUCTION AND DISCHARGE FOR PUMP CALIBRATION.
 - LINE WITHOUT NUMBERS ARE PART OF THE PUMP MOTOR PACKAGE OR INSTRUMENT PACKAGES.
 - INSTALLED SPARE PRESSURE SWITCH.

- REFERENCE DRAWINGS
- PIPE, VALVE & INSTRUMENT SYMBOLS 2998-G-078 SH 100
 - VALVE LIST 2998-A-001
 - LINE LIST 2998-B-002
 - VALVE OPERATIONAL NUMBER INDEX 2998-B-027A
 - INSTRUMENT INSTALLATION DETAILS 2998-B-211
 - INSTRUMENT LIST 2998-B-210C
 - REACTOR COOLANT PUMP OUTLINE 2998-457

NOTE:
THIS DRAWING IS MADE FROM REV. 4
OF DRAWING 2998-G-078 SH 1111

REVISION OF THIS DRAWING MAY REQUIRE UPDATE OF THE FOLLOWING DOCUMENT: FSAR FIGURE 5.1-6

NUCLEAR SAFETY RELATED IN PART ONLY

FLORIDA POWER & LIGHT COMPANY
ST LUCIE PLANT
1803 - 890 MW EXTENSION - UNIT 2
FLOW DIAGRAM
REACTOR COOLANT PUMP
282

SCALE: NONE	APPROVAL	DATE
DR: MECL	[Signature]	2998-G-078
DR: A. L. GOR	[Signature]	SHEET
DR: B. J. GOR	[Signature]	1110
		6

9607170692 - 35

D