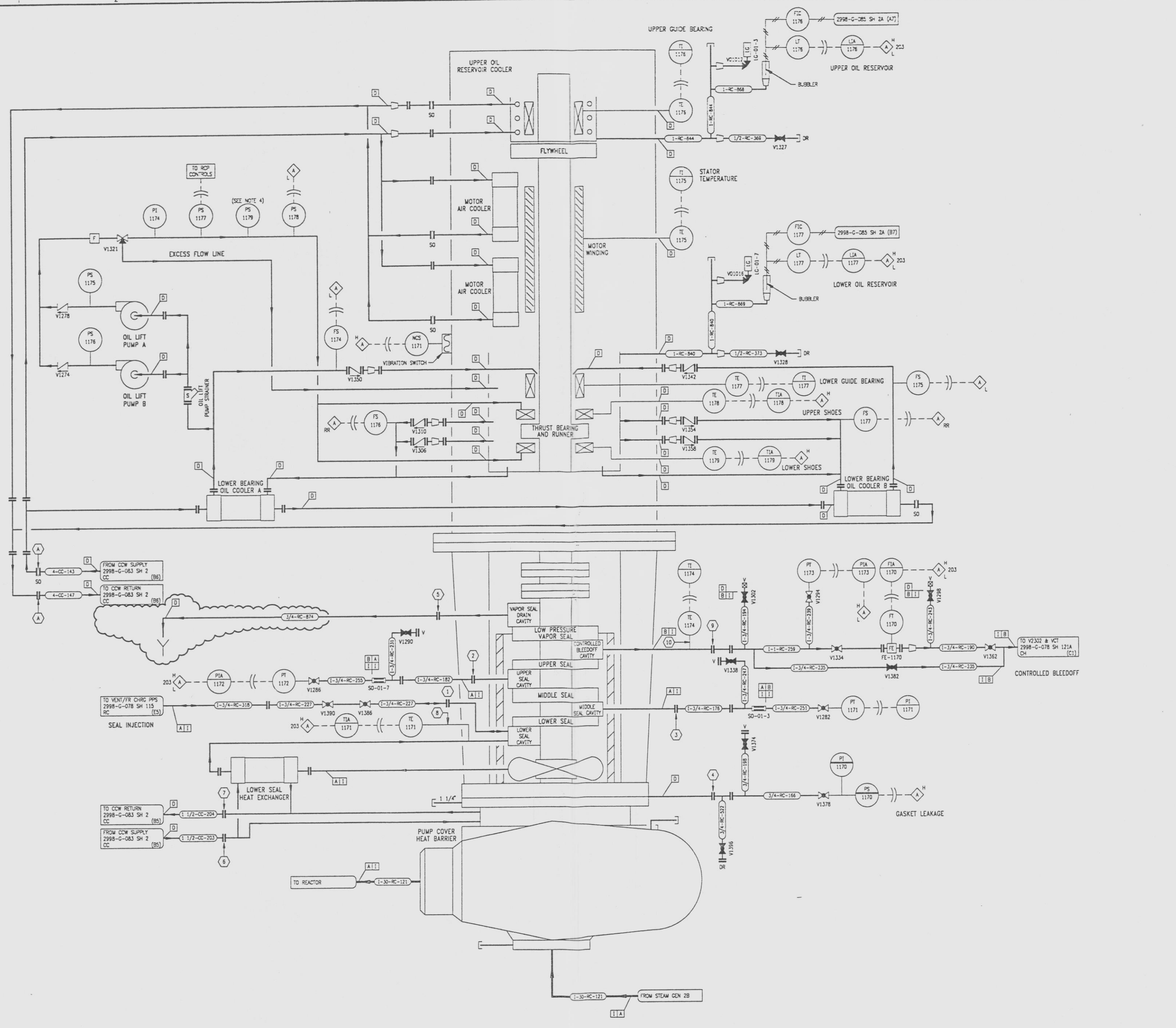


2998-G-078  
SH 111C

REVISIONS				
NO	DATE	DESCRIPTION	BY	APPROVED
5	7/24/95	ADD (E-2) DRAIN DEL (E-7) CONTINUATION	JCO	ALP
6	8/1/95	REV (E-3) LINE NUMBER	CM	AL



- NOTES
- ONE OF SIX STATOR TEMPERATURE ELEMENTS CHOSEN DURING PUMP TEST WILL BE MONITORED.
  - LOCAL PRESSURE TAPS ARE SUPPLIED IN THE PUMP SUCTION AND DISCHARGE FOR PUMP CALIBRATION.
  - LINE WITHOUT NUMBERS ARE PART OF THE PUMP MOTOR PACKAGE OR INSTRUMENT PACKAGES.
  - INSTALLED SPARE PRESSURE SWITCH.

REFERENCE DRAWINGS

PIPE, VALVE & INSTRUMENT SYMBOLS	2998-G-078 SH 100
VALVE LIST	2998-A-051
LINE LIST	2998-B-052
VALUE OPERATIONAL NUMBER INDEX	2998-B-053A
INSTRUMENT INSTALLATION DETAILS	2998-B-231
INSTRUMENT LIST	2998-B-270C
REACTOR COOLANT PUMP OUTLINE	2998-457

NOTE:  
THIS DRAWING IS MADE FROM REV. 4  
OF DRAWING 2998-G-078 SH 111

REVISION OF THIS DRAWING MAY REQUIRE UPDATE OF THE FOLLOWING DOCUMENT: FSAR FIGURE 5.1-6

**NUCLEAR SAFETY RELATED  
IN PART ONLY**

FLORIDA POWER & LIGHT COMPANY  
ST. LUCIE PLANT  
1983 - 890 MWe EXTENSION - UNIT 2  
FLOW DIAGRAM  
REACTOR COOLANT PUMP  
2B1

RAYTHEON ENGINEERS & CONSTRUCTORS, INC.	
SCALE: NONE	APPROVAL
DATE: 2998-G-078	DATE: 111C
DW: J. G. ...	DATE: 2998-G-078
DR: J. G. ...	SHEET: 111C
CH: W. ...	6

2998-G-078 SH111C

9607170092-34

D