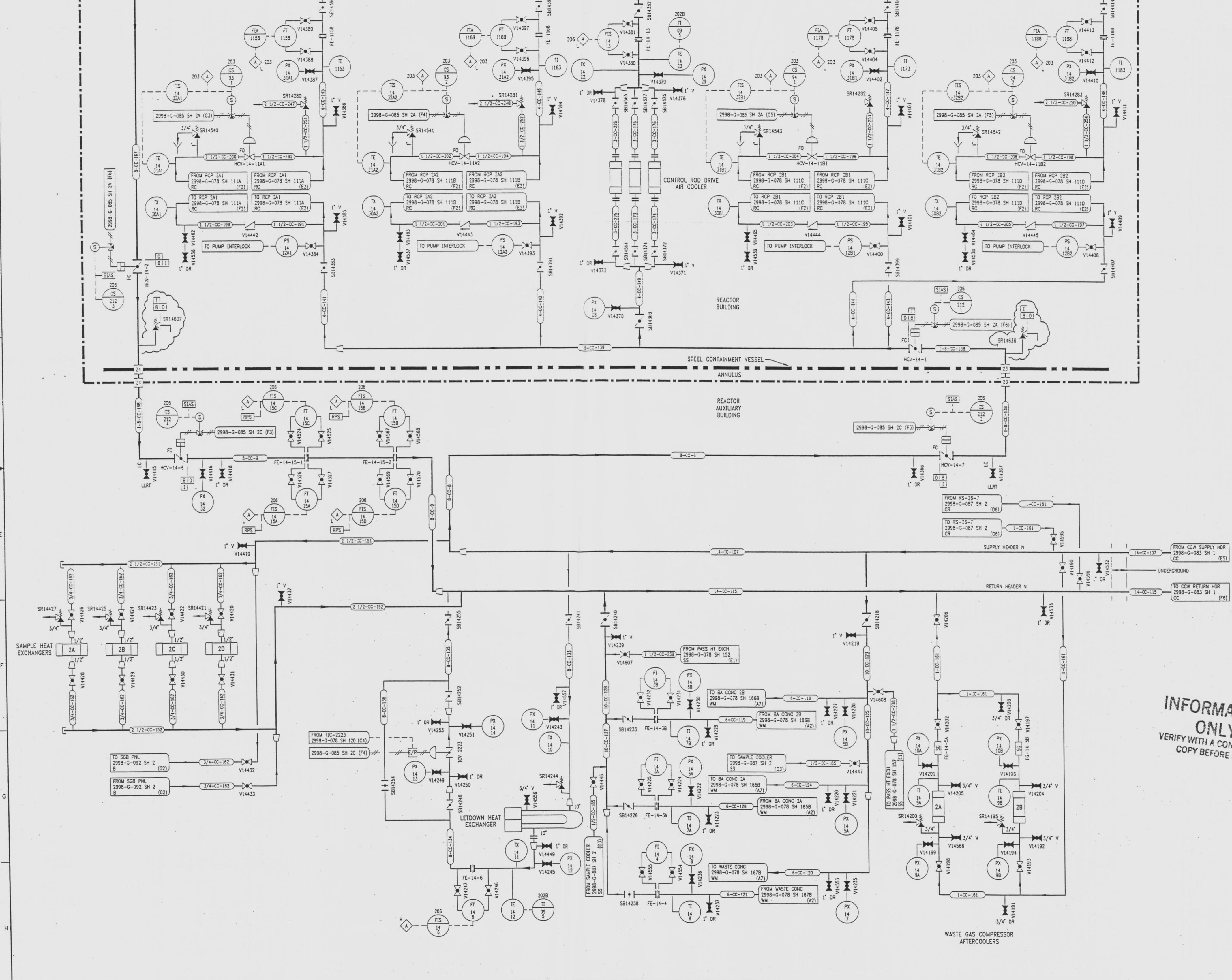


2998-G-083
SH 2

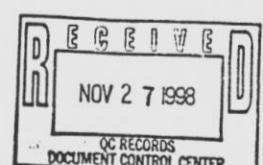


REVISIONS					
NO	DATE	DESCRIPTION	BY	CHK	APPROVED
29	7/24/95	ADD (E1E5) VALVE W/DC	CM	RR	JUZ
30	10/4/96	ADD (E1E5) VALVE W/DC	CM	RR	JUZ
31	10/25/96	REV (F4M4) VALVE POSITION	CM	DM	JUZ
32	11/11/99	ADD (C1D6) VALVES & PIPING	CM	DM	SMS

REFERENCE DRAWINGS

PIPE, VALVE & INSTRUMENT SYMBOLS	2998-G-078 SH 100
VALVE LIST	2998-G-081
LINE LIST	2998-G-082
VALVE OPERATIONAL NUMBER INDEX	2998-G-083A
INSTRUMENT INSTALLATION DETAILS	2998-G-111
INSTRUMENT LIST	2998-G-210C

INFORMATION ONLY
VERIFY WITH A CONTROLLED COPY BEFORE USE.



NOTE: THIS DRAWING IS MADE FROM REV. 38 OF DRAWING 2998-G-083.

REVISION OF THIS DRAWING MAY REQUIRE UPDATE OF THE FOLLOWING DOCUMENT: FSAR FIGURE 9.2-2

NUCLEAR SAFETY RELATED IN PART ONLY

FLORIDA POWER & LIGHT COMPANY
ST. LUCIE PLANT
1983 - 850 MW EXTENSION - UNIT 2
**FLOW DIAGRAM
COMPONENT COOLING SYSTEM**

SCALE: NONE	APPROVAL: DATE:
DRW. BY: JCH	2998-G-083
CHK. BY: S.CHEFFI	SHEET
CHK. BY: D. CLUNNINGHAM	32

9906040221-90
E APERTURE CARD

DRAWING NUMBER
2998-G-083
SH. 2

DRAWING NUMBER
2998-G-083
SH. 2

DRAWING NUMBER

G NUMBER