

TITLE: PLANT PARAMETERS PHONE COMMUNICATOR

1.0 RESPONSIBLE INDIVIDUAL

The Plant Parameters Phone Communicator (in the Control Room) is responsible to the Plant Superintendent for establishing the Plant Parameters phone circuit and transmitting Plant Parameters listed on Attachment 1.

2.0 CONDITIONS AND PREREQUISITES

- 2.1 Report of an Emergency Condition by the Shift Supervisor.
- 2.2 Emergency centers manned.
- 2.3 Plant parameters phone communicator position staffed.

3.0 ACTIONS AND LIMITATIONS

- 3.1 Notify the Plant Superintendent that you are the plant parameters phone communicator. Obtain Plant Superintendent permission to establish plant parameters phone circuit.

Plant Superintendent notified; permission obtained:

/ /
INIT DATE TIME

- 3.2 Notify the Technical Support Center (by dedicated phone) that the Plant Parameters phone will be activated.

/
INIT TIME

- 3.3 Using the Unit 1 computer room C&P phone, contact the Technical Support Center by dialing 4437.

Plant Parameter contact established with TSC.

/
INIT TIME

- 3.4 Contact remaining Emergency centers (by dedicated phone) and advise them to pick up and monitor ext. 4437.

OSC /
INIT TIME

AECC /
INIT TIME

ECC /
INIT TIME

MCC /
INIT TIME



- 3.5 With the TSC on the line and the other centers notified that the line has been activated, transmit plant parameters gathered on Attachment 1, CR/TSC Plant Parameters. Transmit data on the quarter hour or as requested.

- NOTE -

Only Attachment 1 information may be transmitted without specific prior authorization from the Plant Superintendent. If necessary, have center directors contact the Plant Superintendent via the dedicated phone:

CALVERT CLIFFS NUCLEAR POWER PLANT
EMERGENCY RESPONSE PLAN
IMPLEMENTATION PROCEDURES

LIST OF EFFECTIVE PAGES _

<u>ERPIP PAGE</u>	<u>REV.</u>
4.1.22.1-1	0
4.1.22.1-2	0

TITLE: ACCESS CONTROL1.0 RESPONSIBLE INDIVIDUAL

The Emergency Security Team members are responsible to control access to the protected area during Alert conditions, and to control access through the perimeter control boundary during Site and General Emergencies. The Gate and Access Monitoring Team members and the Onsite Monitoring Team members are responsible to control access to Radiological Areas as defined in 2.2 below.

2.0 CONDITIONS AND PREREQUISITES

2.1 As directed by the RPD, the ESTL, or the SEC.

2.2 When access to an area must be controlled to limit exposure to radiation.

-NOTE-

An area shall have (radiological) access control when the following limits are exceeded:

- (1) Loose surface radioactive contamination:

Beta-gamma	1000 dpm/100 cm ²
Alpha	100 dpm/100 cm ²
- (2) Fixed surface radioactive contamination:

Beta-gamma	0.1 mrem/h @ 1 inch, above natural background
------------	---
- (3) Airborne radioactivity 3×10^{-10} uCi beta-gamma/cm³, above natural background

3.0 ACTIONS AND LIMITATIONS

3.1 On declaration of either an "ALERT" or a "SITE EMERGENCY" and orders to report to designated Assembly Areas, the following Access Control actions must be carried out.

3.1.1 Emergency Security Team Members shall:

- 3.1.1.1 Admit no one into the protected area unless they are specifically cleared for entry by radio or telephone contact with the Operational Support Center Director or the Shift Supervisor/SEC or his designee.
- 3.1.1.2 Direct Emergency Response Personnel cleared for entry to report to the OSC (Outage Planning Room)

- 3.1.2.6 Establish Controlled Areas within the protected area or plant if areas are found which exceed Clean Area limits.
- 3.1.2.7 Isolate Controlled Areas as directed by the RPD, RAD or SEC with physical barriers to restrict access and hang signs stating "CAUTION-RADIATION AREA-RADIOACTIVE MATERIALS-AUTHORIZED ENTRY ONLY."
Isolated & Posted: _____ / _____
Initials Time
- 3.1.2.8 Establish a control point for access into each contaminated area if access to the area will be required prior to decontamination.
- 3.1.2.9 Request RPD to notify ESTL of newly established Controlled Area and security requirements.
- 3.1.2.10 Contact the Dosimetry Team Leader, RPD or other monitoring team leaders to verify that each person requiring entry into a Controlled Area:
- (1) Has not exceeded and is not anticipated to exceed allowable exposure limits.
 - (2) Is properly badged.
 - (3) Is familiar with the information contained in ERPIP 4.6.1.
 - (4) Is properly equipped based on the specific isotopes and forms of contamination.
- 3.1.2.11 Monitor individuals leaving a Controlled Area, in accordance with ERPIP 4.3.4.
- 3.2 On declaration of either a "SITE EMERGENCY" or "GENERAL EMERGENCY" and orders to evacuate the Site (and Guard Houses), the following Access Control actions must be carried out:
- 3.2.1 Emergency Security Team Members shall:
- 3.2.1.1 Implement ERPIP Appendix D.3, Traffic Control.
 - 3.2.1.2 Collect all TLD badges, SRDs, logs, buttons, cards, pens and equipment necessary to continue basic security access control (both entry and exit) and load into a security vehicle.

-NOTE-

TLDs and SRDs shall have first priority for removal from the guard house and shall be taken to a low exposure rate area.

- 3.2.1.3 Proceed to the perimeter control point/Assembly Area established on the straight section of the plant access road (just before passing under transmission lines) as directed by the ESTL or RPD.
- 3.2.1.4 Conduct site evacuation and accountability in accordance with ERPIP 4.5.1.2 or 4.5.1.3, as appropriate, and 4.10.
- 3.2.1.5 As requested by the ESTL, report to an Emergency Center to assist in communication with and coordination of State, Federal and local police agencies.
- 3.2.1.6 Provide the necessary direction to State and local police to unify the concurrent enforcement of access control efforts to the CCNPP site.
 - (1) Assure all vehicles are stopped at the perimeter control point.

-CAUTION-

ENSURE THAT MAXIMUM EFFORT IS MADE TO CONTACT THE OSC, PLANT EMERGENCY STAFF, CONTROL ROOM OR A PLANT CONTACT REQUESTED BY THE PERSON SEEKING ACCESS PRIOR TO DISALLOWING ACCESS TO THE PLANT.

- (2) Ensure that all persons leaving the perimeter control point for the plant are properly equipped with dosimeters and ID badges and are properly directed and cautioned. Document the Dosimetry Issuance on Attachment 1, Dosimetry Issue Log.
- (3) Ensure that escorts are provided (by Security or personnel qualified to escort) as applicable.

-NOTE-

Only the first of several emergency vehicles proceeding to a single location at the plant requires escort. Additionally, searches of emergency vehicles may be waived.

- 3.2.1.7 Assist the Emergency Radiation Team members as directed by the ESTL or SEC to assure the proper establishment,

moving and reestablishment of the perimeter control boundary.

3.2.1.8 Control access to newly established Controlled Areas both inside and outside the protected area fence when requested by the RPD or RAD.

3.2.1.9 If Dosimetry Team members are assigned to an Access Control Point, assist in the Dosimetry issue, recovery, and documentation.

3.2.2 Onsite Monitoring Team Members shall:

3.2.2.1 Perform radiation surveys in accordance with ERPIP 4.3.

3.2.2.2 Periodically reevaluate the location of the perimeter control point and relocate when local activity levels are anticipated to exceed Clean Area limits.

3.2.2.3 Establish Controlled Areas onsite but outside the protected area fence based upon projected doses and radiation surveys by identifying the specific boundaries of the area, setting up physical barriers and signs where practicable, and reporting these areas to the ECC.

3.2.2.4 Request RPD to notify ESTL of newly established Controlled Area and security requirements.

3.2.2.5 Contact the Dosimetry Team Leader or other monitoring team leaders to verify that each person requiring entry into a Controlled Area:

(1) Has not exceeded and is not anticipated to exceed allowable exposure limits.

(2) Is properly badged.

(3) Is familiar with the information contained in ERPIP 4.6.1.

(4) Is properly equipped based on the specific isotopes and forms of contamination.

3.2.2.6 Monitor all persons leaving Controlled Areas, in accordance with ERPIP 4.3.4.

3.2.3 Gate and Access Monitoring Team Members shall perform actions in Step 3.1.2 as necessary.

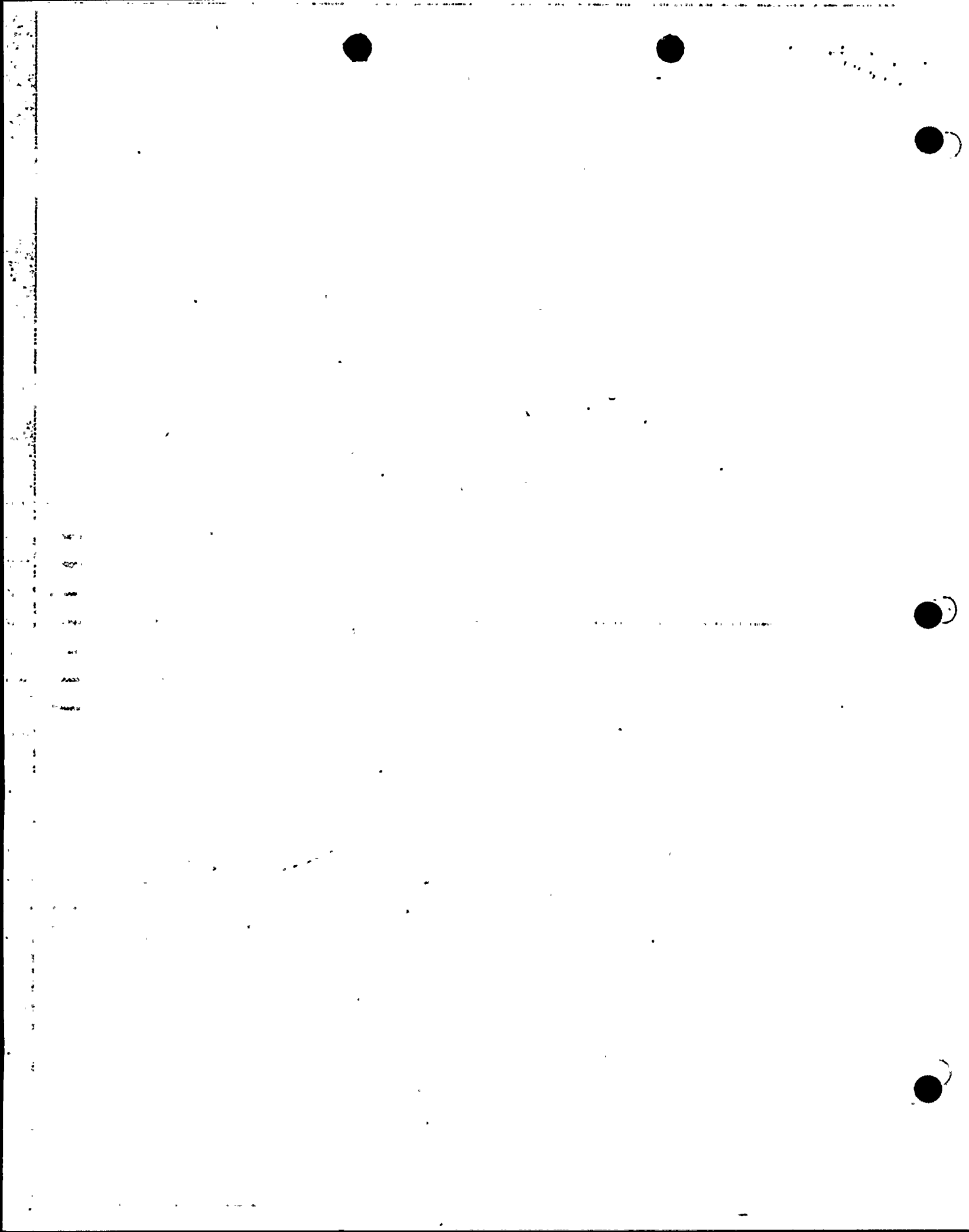
-CAUTION-

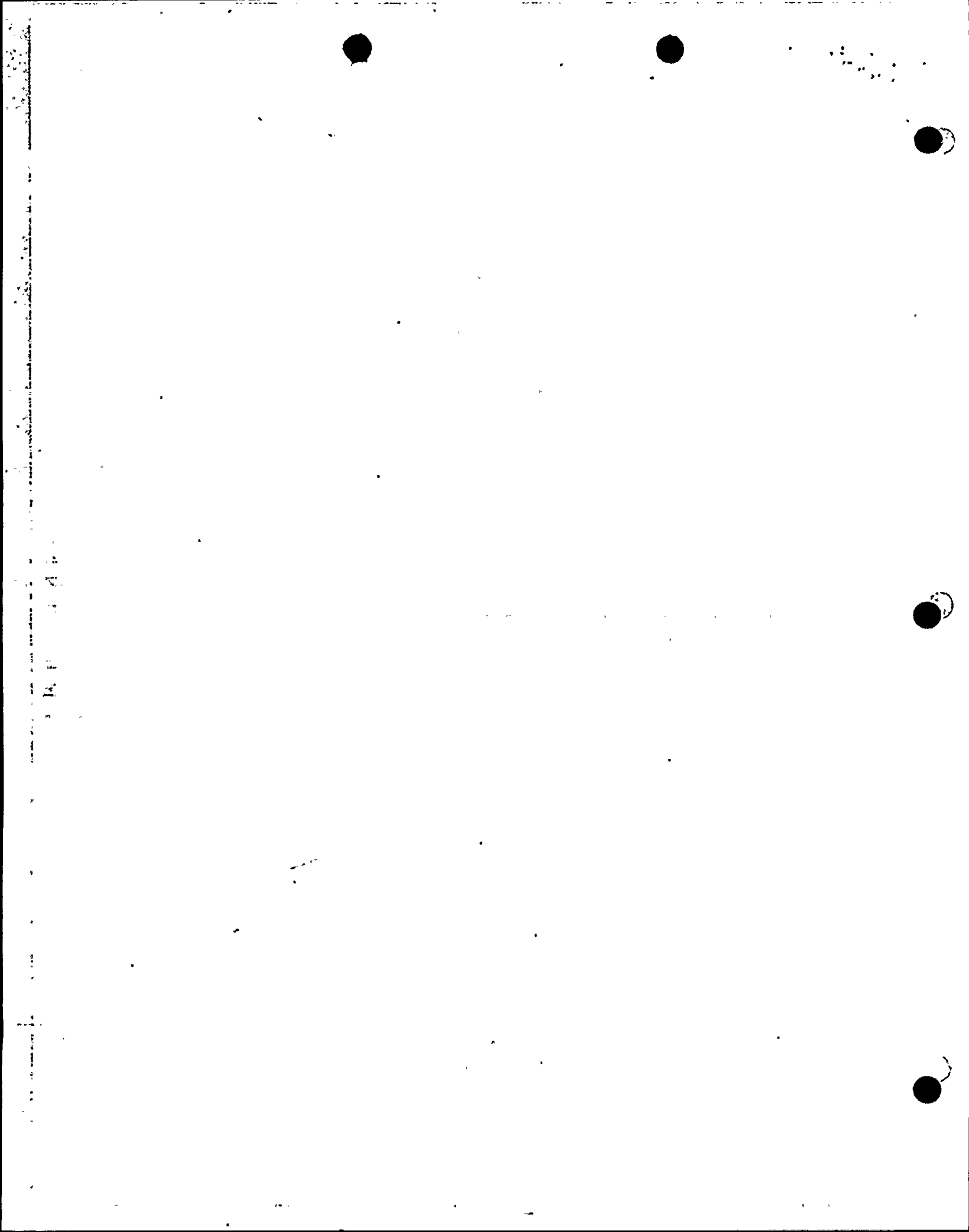
ENSURE THAT RWP_s ARE COMPLETED PRIOR TO ENTRY OF AREAS NORMALLY UNDER ACCESS CONTROL. ALSO, ENSURE SWP_s ARE COMPLETED FOR ENTRY INTO AREAS WITH CONTROLLED ACCESS DUE TO EMERGENCY STATUS AND THAT QUALIFIED MONITORING PERSONNEL ARE PRESENT AS NECESSARY.

CALVERT CLIFFS NUCLEAR POWER PLANT
EMERGENCY RESPONSE PLAN
IMPLEMENTATION PROCEDURES

LIST OF EFFECTIVE PAGES _____

<u>ERPIP PAGE</u>	<u>REV.</u>
4.5.2-1	9
4.5.2-2	9
4.5.2-3	9
4.5.2-4	9
4.5.2-5	9
4.5.2-6	9
4.5.2-7	9
4.5.2-8	9





TITLE: EMERGENCY REENTRY1.0 RESPONSIBLE INDIVIDUAL

The Emergency Reentry Team Leader is responsible to the Site Emergency Coordinator to ensure that this procedure is appropriately implemented. The RPD acts as the ERTL for initial entry and all subsequent entries until radiological conditions are defined and posted. Members of the Emergency Reentry Team are responsible to the team leader to ensure that procedures are carried out as necessary in the reentry operation and in accordance with procedures.

2.0 CONDITIONS AND PREREQUISITES

- 2.1 As directed by the SEC or the Emergency Reentry Team Leader.
- 2.2 ER PIP 4.6.1 provides guidelines on "Emergency Personnel Radiation Exposure".
- 2.3 ER PIP 4.8.1 provides guidelines on "Emergency Work Permits and Exposure Control".

3.0 DISCUSSION

Emergency reentry teams that must enter areas where they might be expected to receive higher than normal doses will be fully briefed regarding their duties and actions and what they are to do while in the area. They will also be fully briefed as to expected dose rates, stay time, and other hazards. All such entries will include one member from the ERMT or other person adequately trained in health physics. All team members will use protective clothing, dosimeters, respiratory devices, and other protective devices as specified by the Emergency Work Permit. The team members will be instructed not to deviate from the planned route unless required by unanticipated conditions, such as rescue or performing an operation that would minimize the emergency condition. If the monitored exposure rates or stay times encountered during the entry exceed the limits set forth for the operation, the team will immediately communicate with the Site Emergency Coordinator, or the Radiological Protection Director, or will return to the area from where they were dispatched.

Once their operation has been completed, the team personnel will follow established monitoring and personnel decontamination procedures or as specified by the

Radiological Protection Director.

4.0 ACTIONS AND LIMITATIONS

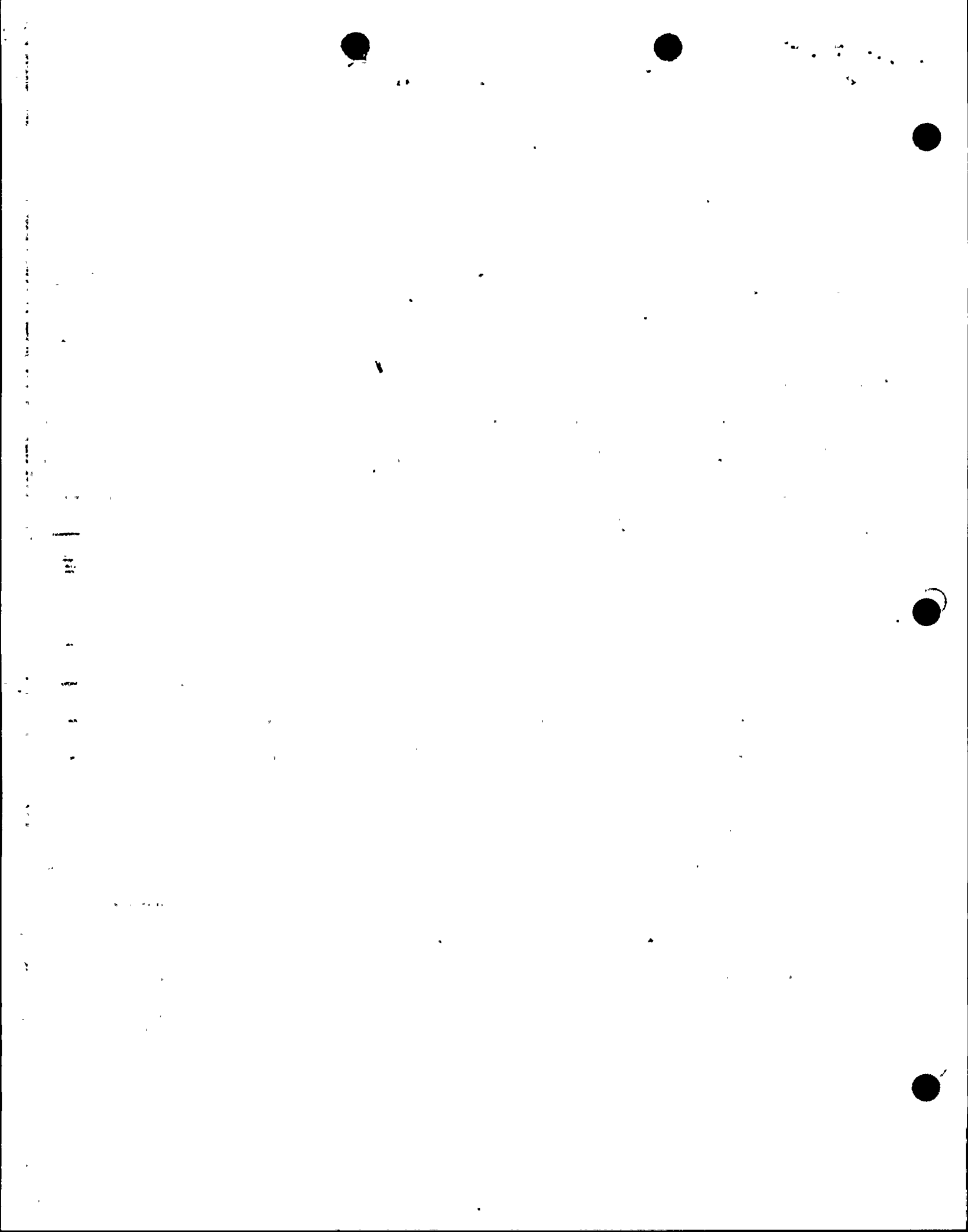
- 4.1 Prior to the performance of reentry tasks, assure the following actions have been performed, as necessary, for reentry assignments.
- 4.1.1 Instruction has been given on the plans for carrying out the SEC's directives by the Emergency Reentry Team Leader.
- 4.1.2 Planning of tasks which present significant potential for radiation dose has been reviewed by the RPD to insure that reasonable precautions are to be taken.
- 4.1.2.1 Ensure that entry personnel have read and signed Emergency Work Permit.
- 4.1.3 Briefing on the hazards of radiation exposure and exposure limits as listed in ERPIP 4.6.1, is complete.
- 4.1.4 Briefing on the degree of urgency with which the tasks has to be performed.
- 4.1.5 Briefing by the Radiation Protection Director on existing radiation hazards, stay times, protective apparel, and monitoring equipment and its use is complete.
- 4.1.6 Equipment to perform tasks is available for use.
- 4.2 Following predetermined search routes, search for unaccountable personnel in the areas specified by the Team Leader.

-CAUTION-

DO NOT DEVIATE FROM THE PREDETERMINED ROUTE. IF THE MONITORED DOSE RATES OR STAY TIMES ENCOUNTERED DURING THE REENTRY EXCEED THE LIMITS SET FOR THE REENTRY OPERATION, IMMEDIATELY COMMUNICATE WITH THE TEAM LEADER, SEC, RPD, OR RETURN TO THE AREA FROM WHICH YOU WERE DISPATCHED. ASSURE THAT EWP'S ARE COMPLETED AS REQUIRED PRIOR TO REENTRY AND THAT THE ERMTL IS COGNIZANT OF ALL REENTRIES.

- 4.2.1 Record information identified on Attachment 1, Emergency Reentry Search Report and submit search results to Emergency Reentry Team Leader.

- 4.3 Administer first aid in accordance with ERPIP 4.6.2 to any personnel injured or trapped in hazardous areas.
- 4.4 If contamination of personnel in a hazardous area placed them in immediate danger exceeding that caused by the injury, move them to a safer area and perform gross decontamination in accordance with ERPIP 4.5.5.
- 4.5 Conduct any short term operations (such as closing isolation valves, removing obstructions from drains, venting areas) in the hazardous areas which may mitigate hazardous conditions or their effects.
- 4.6 Consult with the Reentry Team Leader as requested to develop and map the best access routes to incident areas.
- 4.7 Prior to leaving controlled or contaminated areas, submit to monitoring and determine exposure received in accordance with ERPIP 4.3.4.
- 4.8 Assure records concerning dose and contamination are completed.
- 4.9 Submit to decontamination in accordance with ERPIP 4.5.5, as necessary.
- 4.10 Report to Emergency Reentry Team Leader for debriefing.



ATTACHMENT I

EMERGENCY REENTRY SEARCH

REPORT

Entry Date: _____ Time: Start _____ Finish _____

Area: _____

Area Radiation Levels: _____

Search Results: _____

Information Reported to RPD

Initials

Entry Date: _____ Time: Start _____ Finish _____

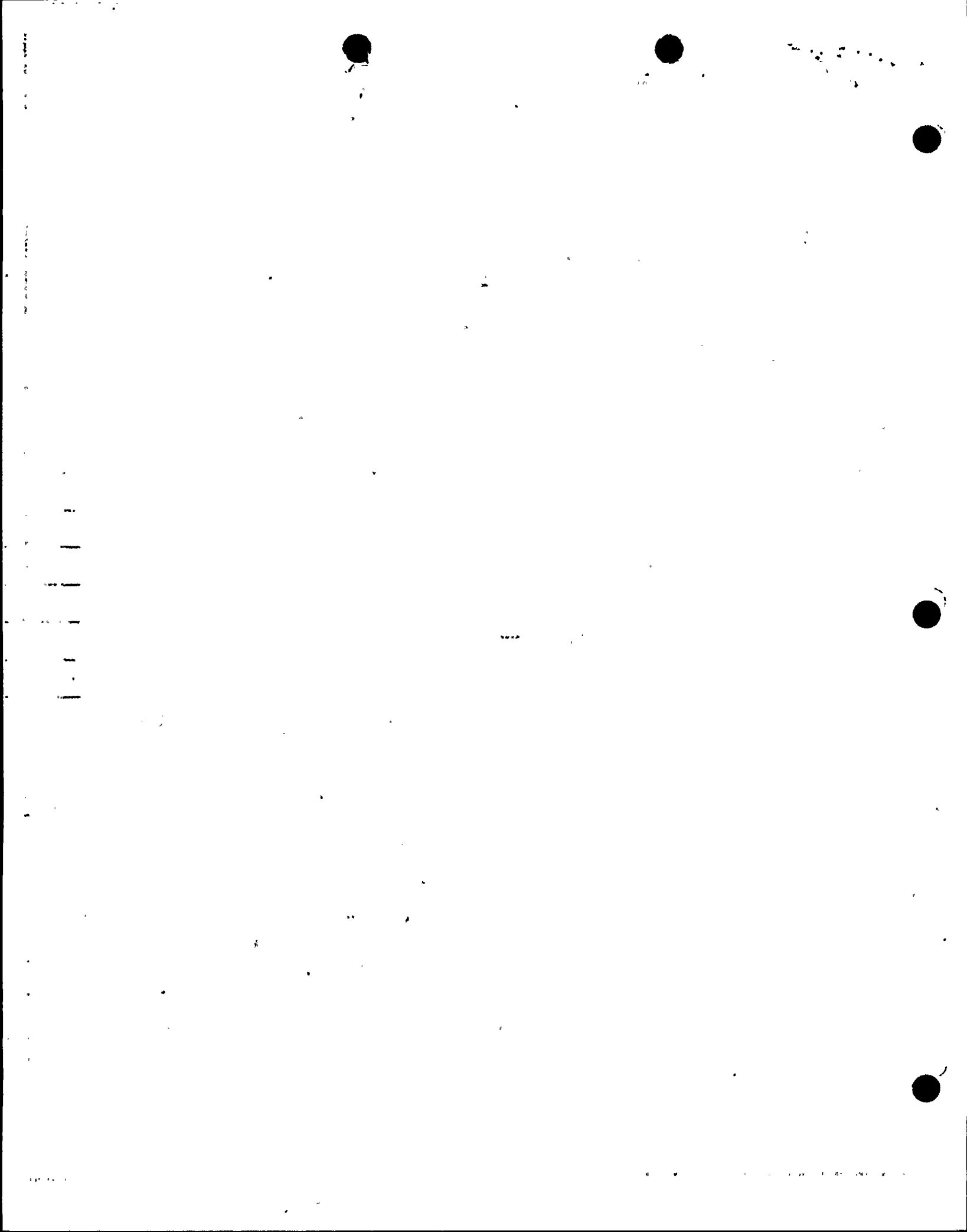
Area: _____

Area Radiation Levels: _____

Search Results: _____

Information Reported to RPD

Initials



CALVERT CLIFFS NUCLEAR POWER PLANT
EMERGENCY RESPONSE PLAN
IMPLEMENTATION PROCEDURES

LIST OF EFFECTIVE PAGES _____

<u>ERPIP PAGE</u>	<u>REV.</u>
4.8-1	9
4.8-2	9
4.8-3	9
4.8-4	9