

REGULATORY INFORMATION DISTRIBUTION SYSTEM (RIDS)

ACCESSION NBR: 8111170255 DOC. DATE: 81/11/12 NOTARIZED: NO DOCKET #  
 FACIL: 50-315 Donald C. Cook Nuclear Power Plant, Unit 1, Indiana & 05000315  
 50-316 Donald C. Cook Nuclear Power Plant, Unit 2, Indiana & 05000316  
 AUTH. NAME: AUTHOR AFFILIATION  
 \* Indiana & Michigan Electric Co.  
 RECIP. NAME: RECIPIENT AFFILIATION

*Revision 1*

SUBJECT: Central Files version of emergency plan implementing procedures, including Procedure PMP. 2080 EPP.001 re emergency plan activation & condition classification & Procedure 2808 EPP.006 re initial dose assessments (gaseous).

*Revised 11-20-81 DMB*  
 DISTRIBUTION CODE: X0055 COPIES RECEIVED: LTR 1 ENCL 1 SIZE: 5.2  
 TITLE: Emerg Plan (CF Avail)

NOTES: I&E: 3 copies all material, 05000315  
 I&E: 3 copies all material, 05000316

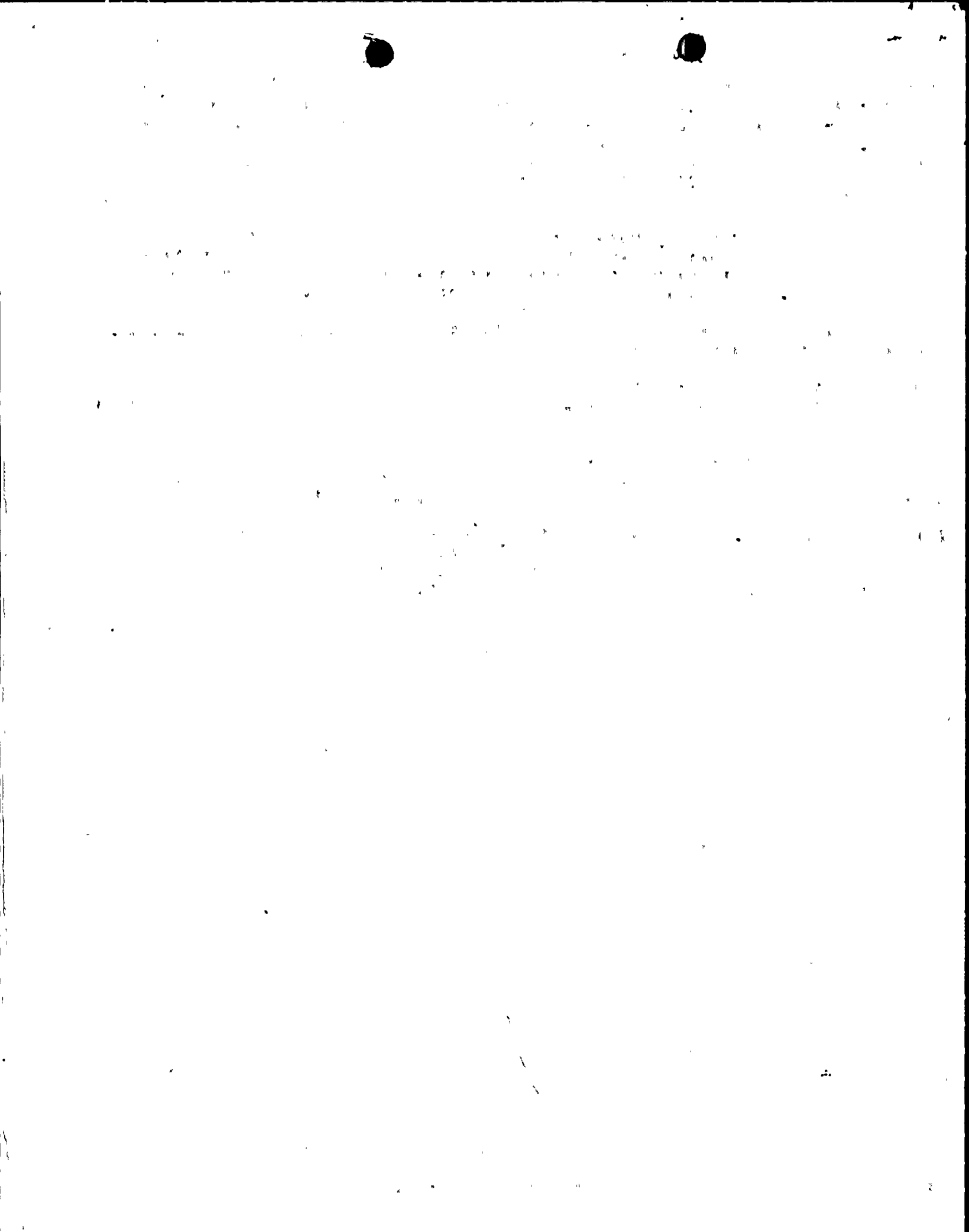
| ACTION:   | RECIPIENT      | COPIES       | RECIPIENT           | COPIES       |
|-----------|----------------|--------------|---------------------|--------------|
|           | ID CODE/NAME   |              |                     |              |
|           | ORBI #1 BC     | LTR 0 ENCL 0 | MINER, S. 01        | LTR 1 ENCL 1 |
| INTERNAL: | FELTON, J. 02  | 1 1          | FEMA-REP DIV 09     | 1 1          |
|           | I&E 08         | 2 1          | IE/DEP DIR          | 1 0          |
|           | IE/DEP/EPDB 06 | 1 1          | IE/DEP/EPLB 03      | 3 3          |
|           | NRV/DSI/RAB    | 1 0          | <u>REG FILES</u> 07 | 1 1          |

*Missing Pages*

*EPP.001 1 of 27 10-27-81*  
*2 of 27 10-27-81*  
*EPP.006 4 of 11*  
*6 of 11*  
*8 of 11*  
*10 of 11*

NOV 19 1981

TOTAL NUMBER OF COPIES REQUIRED: LTR 13 ENCL 12



**INDIANA & MICHIGAN**  
**ELECTRIC COMPANY**  
**DONALD C. COOK NUCLEAR PLANT**

**PROCEDURE COVER SHEET**

Procedure No. PMP 2080 EPP.001

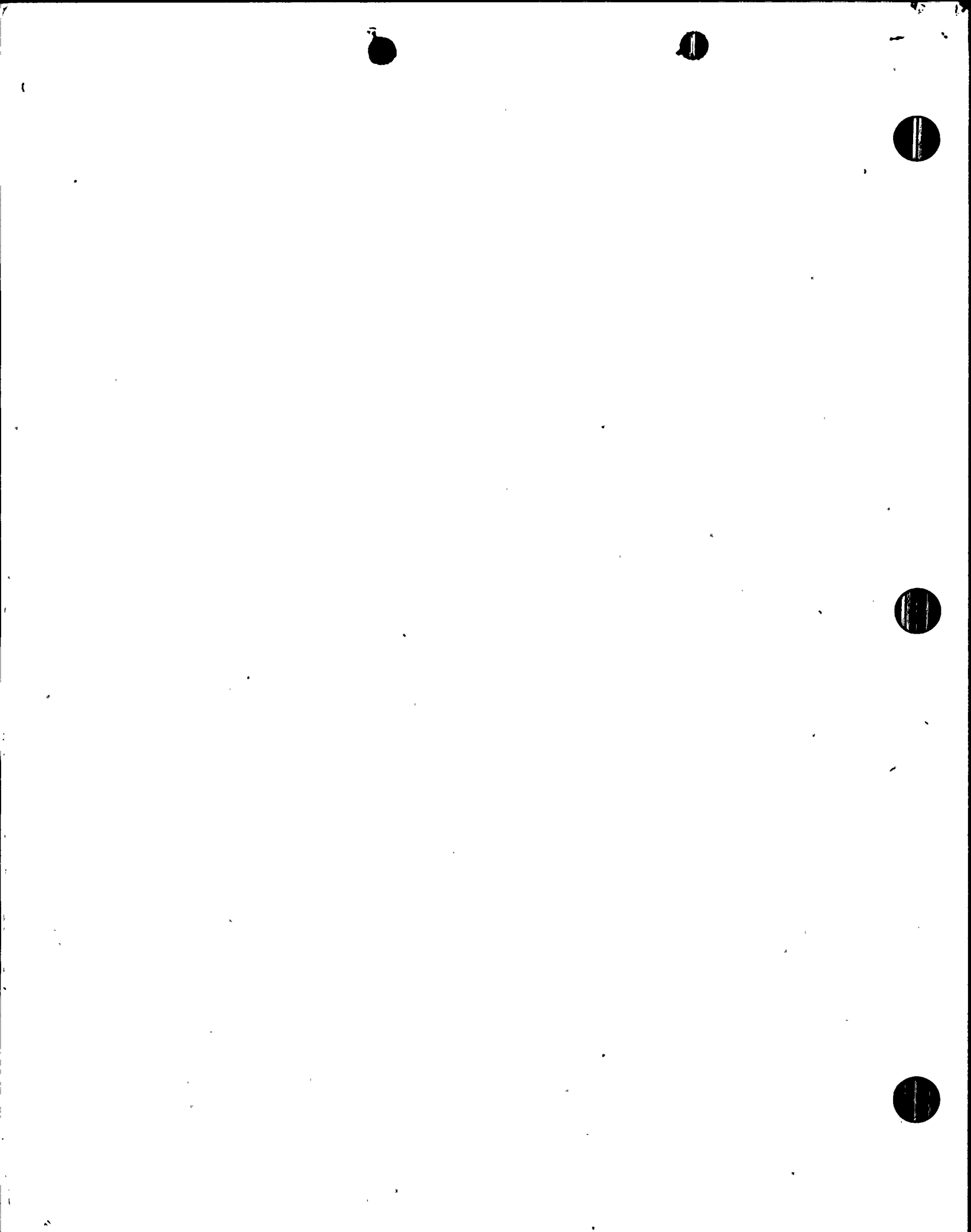
Revision No. 0

**TITLE** EMERGENCY PLAN ACTIVATION AND CONDITION CLASSIFICATION

**SCOPE OF REVISION**

**SIGNATURES**

|   | ORIGINAL           | Rev. 1 | REV. 2 | Rev. 3 |
|---|--------------------|--------|--------|--------|
| PREPARED BY                             | <i>D. Webster</i>  |        |        |        |
| QUALITY ASSURANCE REVIEW                | <i>[Signature]</i> |        |        |        |
| INTERFACING DEPARTMENT HEAD CONCURRENCE | N.A.               |        |        |        |
| DEPARTMENT HEAD APPROVAL                | N.A.               |        |        |        |
| PLANT NUCLEAR SAFETY COMMITTEE          | <i>[Signature]</i> |        |        |        |
| PLANT MANAGER APPROVAL                  | <i>[Signature]</i> |        |        |        |
| DATE OF ISSUE                           | 3-31-81            |        |        |        |



LIST OF EFFECTIVE PAGESPage NumbersRevision Number and Date

|               |           |                     |
|---------------|-----------|---------------------|
| Page 1 of 12  |           | Revision 0 - 4/1/81 |
| Page 2 of 12  |           | Revision 0 - 4/1/81 |
| Page 3 of 12  |           | Revision 0 - 4/1/81 |
| Page 4 of 12  | EXHIBIT A | Revision 0 - 4/1/81 |
| Page 5 of 12  | "         | Revision 0 - 4/1/81 |
| Page 6 of 12  | "         | Revision 0 - 4/1/81 |
| Page 7 of 12  | "         | Revision 0 - 4/1/81 |
| Page 8 of 12  | "         | Revision 0 - 4/1/81 |
| Page 9 of 12  | "         | Revision 0 - 4/1/81 |
| Page 10 of 12 | EXHIBIT B | Revision 0 - 4/1/81 |
| Page 11 of 12 | EXHIBIT C | Revision 0 - 4/1/81 |
| Page 12 of 12 | EXHIBIT D | Revision 0 - 4/1/81 |

