

UNITED STATES
NUCLEAR REGULATORY COMMISSION
WASHINGTON, D. C. 20555

INDIANA AND MICHIGAN ELECTRIC COMPANY

DOCKET NO. 50-315

DONALD C. COOK NUCLEAR PLANT UNIT NO. 1

AMENDMENT TO FACILITY OPERATING LICENSE

Amendment No. 77
License No. DPR-58

- I. The Nuclear Regulatory Commission (the Commission) has found that:
 - A. The application for amendment by Indiana and Michigan Electric Company (the licensee) dated April 8, 1983, complies with the standards and requirements of the Atomic Energy Act of 1954 as amended (the Act) and the Commission's rules and regulations set forth in 10 CFR Chapter I;
 - B. The facility will operate in conformity with the application, the provisions of the Act, and the rules and regulations of the Commission;
 - C. There is reasonable assurance (i) that the activities authorized by this amendment can be conducted without endangering the health and safety of the public, and (ii) that such activities will be conducted in compliance with the Commission's regulations;
 - D. The issuance of this amendment will not be inimical to the common defense and security or to the health and safety of the public; and
 - E. The issuance of this amendment is in accordance with 10 CFR Part 51 of the Commission's regulations and all applicable requirements have been satisfied.

8312070320 831123
PDR ADDCK 05000315
P PDR

2. Accordingly, the licensee is amended by changes to the Technical Specifications as indicated in the attachment to this license amendment, and paragraph 2.C.(2) of Facility Operating License No. DPR-58 is hereby amended to read as follows:

(2) Technical Specifications

The Technical Specifications contained in Appendices A and B, as revised through Amendment No. 77, are hereby incorporated in the license. The licensee shall operate the facility in accordance with the Technical Specifications.

3. The change in Technical Specification is to become effective within 30 days of issuance of the amendment. In the period between issuance of the amendment and the effective date of the new Technical Specifications, the licensee shall adhere to the Technical Specification for the systems, components, or operation existing at the time. The period of time between changeover of systems, components, or operation shall be minimized or compensated for by suitable temporary alternatives.
4. This license amendment is effective as of the date of its issuance.

FOR THE NUCLEAR REGULATORY COMMISSION



Steven A. Varga, Chief
Operating Reactors Branch No 1
Division of Licensing

Enclosure:
Changes to the Technical
Specifications

Date of issuance: November 23, 1983



UNITED STATES
NUCLEAR REGULATORY COMMISSION
WASHINGTON, D. C. 20555

INDIANA AND MICHIGAN ELECTRIC COMPANY

DOCKET NO. 50-316

DONALD C. COOK NUCLEAR PLANT UNIT NO. 2

AMENDMENT TO FACILITY OPERATING LICENSE

Amendment No. 58
License No. DPR-74

1. The Nuclear Regulatory Commission (the Commission) has found that:
 - A. The application for amendment by Indiana and Michigan Electric Company (the licensee) dated April 8, 1983, complies with the standards and requirements of the Atomic Energy Act of 1954 as amended (the Act) and the Commission's rules and regulations set forth in 10 CFR Chapter I;
 - B. The facility will operate in conformity with the application, the provisions of the Act, and the rules and regulations of the Commission;
 - C. There is reasonable assurance (i) that the activities authorized by this amendment can be conducted without endangering the health and safety of the public, and (ii) that such activities will be conducted in compliance with the Commission's regulations;
 - D. The issuance of this amendment will not be inimical to the common defense and security or to the health and safety of the public; and
 - E. The issuance of this amendment is in accordance with 10 CFR Part 51 of the Commission's regulations and all applicable requirements have been satisfied.

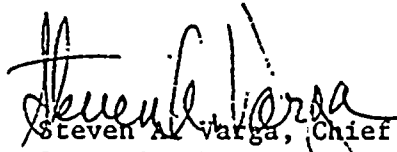
2. Accordingly, the licensee is amended by changes to the Technical Specifications as indicated in the attachment to this license amendment, and paragraph 2.C.(2) of Facility Operating License No. DPR-74 is hereby amended to read as follows:

(2) Technical Specifications

The Technical Specifications contained in Appendices A and B, as revised through Amendment No. 58 , are hereby incorporated in the license. The licensee shall operate the facility in accordance with the Technical Specifications.

3. The change in Technical Specification is to become effective within 30 days of issuance of the amendment. In the period between issuance of the amendment and the effective date of the new Technical Specifications, the licensee shall adhere to the Technical Specification for the systems, components, or operation existing at the time. The period of time between changeover of systems, components, or operation shall be minimized or compensated for by suitable temporary alternatives.
4. This license amendment is effective as of the date of its issuance.

FOR THE NUCLEAR REGULATORY COMMISSION



Steven A. Varga, Chief
Operating Reactors Branch No 1
Division of Licensing

Enclosure:
Changes to the Technical
Specifications

Date of issuance: November 23, 1983

ATTACHMENT TO LICENSE AMENDMENTS

AMENDMENT NO. 77 TO FACILITY OPERATING LICENSE NO. DPR-58

AMENDMENT NO. 58 TO FACILITY OPERATING LICENSE NO. DPR-74

DOCKET NOS. 50-315 AND 50-316

Revise Appendix A as follows:

Remove Pages

Insert Pages

Unit 1

6-1
6-2
6-15

6-1
6-2*
6-15

Unit 2

6-1
6-2
6-15

6-1
6-2*
6-15

*Included for convenience only

6.0 ADMINISTRATIVE CONTROLS

6.1 RESPONSIBILITY

6.1.1 The Plant Manager shall be responsible for overall facility operation and shall delegate in writing the succession to this responsibility during his absence.

6.2 ORGANIZATION

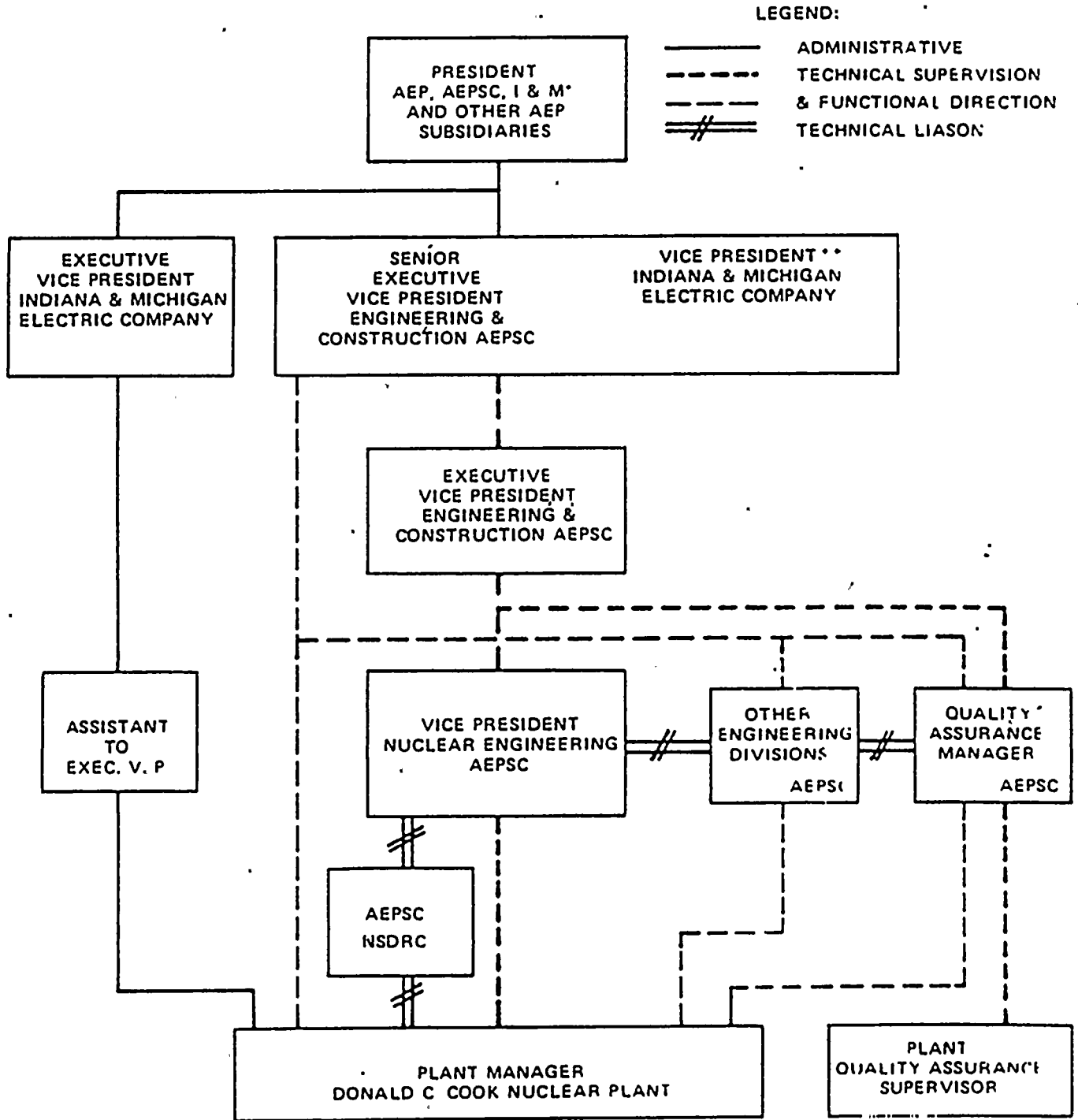
OFFSITE

6.2.1 The offsite organization for facility management and technical support shall be as shown on Figure 6.2-1.

FACILITY STAFF

6.2.2 The Facility organization shall be as shown on Figure 6.2-2 and:

- a. Each on duty shift shall be composed of at least the minimum shift crew composition shown in Table 6.2-1.
- b. At least one licensed Operator shall be in the control room when fuel is in the reactor.
- c. At least two licensed Operators shall be present in the control room during reactor start-up, scheduled reactor shutdown and during recovery from reactor trips.
- d. An individual qualified in radiation protection procedures shall be on site when fuel is in the reactor.
- e. ALL CORE ALTERATIONS after the initial fuel loading shall be directly supervised by either a licensed Senior Reactor Operator or Senior Reactor Operator Limited to Fuel Handling who has no other concurrent responsibilities during this operation.
- f. A site Fire Brigade of at least 5 members shall be maintained onsite at all times. The fire Brigade shall not include 3 members of the minimum shift crew necessary for safe shutdown of the unit or any personnel required for other essential functions during a fire emergency.
- g. The amount of overtime worked by plant staff members performing safety-related functions must be limited in accordance with NRC Policy Statement on working hours (Generic Letter No. 82-12).



* INDIANA AND MICHIGAN ELECTRIC COMPANY

** Responsible for Fire Protection Program

FIGURE 6.2 1 Offsite Organization for Facility Management and Technical Support:

ADMINISTRATIVE CONTROLS

power operation), supplementary reports shall be submitted at least every three months until all three events have been completed.

ANNUAL REPORTS^{1/}

6.9.1.4 Annual reports covering the activities of the unit as described below for the previous calendar year shall be submitted prior to March 1 of each year. The initial report shall be submitted prior to March 1 of the year following initial criticality.

6.9.1.5 Reports required on an annual basis shall include:

- a. A tabulation on an annual basis of the number of station, utility and other personnel (including contractors) receiving exposures greater than 100 mrem/yr and their associated man rem exposure according to work and job functions, e.g., reactor operations and surveillance, inservice inspection, routine maintenance, special maintenance (describe maintenance), waste processing, and refueling. The dose assignment to various duty functions may be estimates based on pocket dosimeter, TLD, or film badge measurements. Small exposures totalling less than 20% of the individual total dose need not be accounted for. In the aggregate, at least 80% of the total whole body dose received from external sources shall be assigned to specific major work functions.
- b. The complete results of steam generator tube inservice inspections performed during the report period (reference Specification 4.4.5.5.b).
- c. Documentation of all challenges to the pressurizer power operated relief valves (PORVs) or safety valves.

¹ A single submittal may be made for a multiple unit station. The submittal should combine those sections that are common to all units at the station.

² This tabulation supplements the requirements of 20.407 of 10 CFR Part 20.

6.0 ADMINISTRATIVE CONTROLS

6.1 RESPONSIBILITY

6.1.1 The Plant Manager shall be responsible for overall facility operation and shall delegate in writing the succession to this responsibility during his absence.

6.2 ORGANIZATION

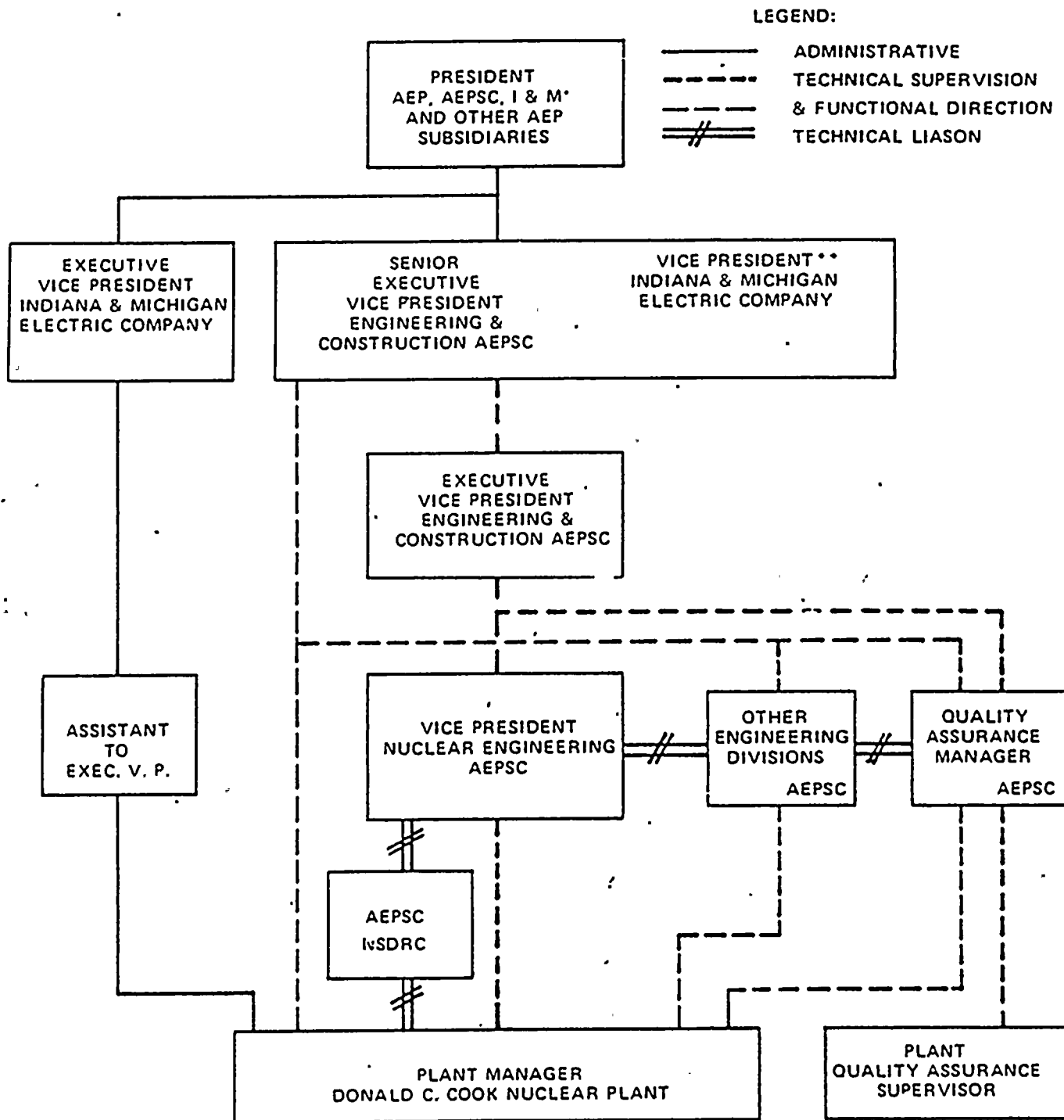
OFFSITE

6.2.1 The offsite organization for facility management and technical support shall be as shown in Figure 6.2-1.

FACILITY STAFF

6.2.2 The Facility organization shall be as shown on Figure 6.2-2 and:

- a. Each on duty shift shall be composed of at least the minimum shift crew composition shown in Table 6.2-1.
- b. At least one licensed Operator shall be in the control room when fuel is in the reactor.
- c. At least two licensed Operators shall be present in the control room during reactor start-up, scheduled reactor shutdown and during recovery from reactor trips.
- d. An individual qualified in radiation protection procedures shall be on site when fuel is in the reactor.
- e. ALL CORE ALTERATIONS shall be directly supervised by either a licensed Senior Reactor Operator or Senior Reactor Operator Limited to Fuel Handling who has no other concurrent responsibilities during this operation.
- f. A site Fire Brigade of at least 5 members shall be maintained onsite at all times. The Fire Brigade shall not include 3 members of the minimum shift crew necessary for safe shutdown of the unit or any personnel required for other essential functions during a fire emergency.
- g. The amount of overtime worked by plant staff members performing safety-related functions must be limited in accordance with the NRC Policy Statement on working hours (Generic Letter No. 82-12).



*INDIANA AND MICHIGAN ELECTRIC COMPANY

**Responsible for Fire Protection Program

FIGURE 6.2-1 Offsite Organization for Facility Management and Technical Support

ADMINISTRATIVE CONTROLS

power operation), supplementary reports shall be submitted at least every three months until all three events have been completed.

ANNUAL REPORTS^{1/}

6.9.1.4 Annual reports covering the activities of the unit as described below for the previous calendar year shall be submitted prior to March 1 of each year. The initial report shall be submitted prior to March 1 of the year following initial criticality.

6.9.1.5 Reports required on an annual basis shall include:

- a. A tabulation on an annual basis of the number of station, utility and other personnel (including contractors) receiving exposures greater than 100 mrem/yr and their associated man rem exposure according to work and job functions,^{2/} e.g., reactor operations and surveillance, inservice inspection, routine maintenance, special maintenance (describe maintenance), waste processing, and refueling. The dose assignment to various duty functions may be estimates based on pocket dosimeter, TLD, or film badge measurements. Small exposures totalling less than 20% of the individual total dose need not be accounted for. In the aggregate, at least 80% of the total whole body dose received from external sources shall be assigned to specific major work functions.
- b. The complete results of steam generator tube inservice inspections performed during the report period (reference Specification 4.4.5.5.b).
- c. Documentation of all challenges to the pressurizer power operated relief valves (PORVs) or safety valves.

¹ A single submittal may be made for a multiple unit station. The submittal should combine those sections that are common to all units at the station.

² This tabulation supplements the requirements of 20.407 of 10 CFR Part 20.