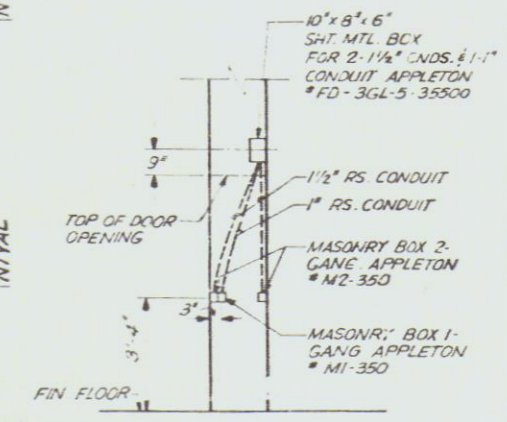


KEY PLAN - LEVEL 4



SECTION (K)

TRAY END DROP-OUT  
N/AHU  
EAST TO WEST  
NRR01-3'  
NRR02-3'  
NRR03-3'  
NRR101-3'  
NRR102-3'  
NRR103-3'  
NRR104-3'  
NRR105-3'  
NRR106-3'  
NRR107-3'  
NRR108-3'  
NRR109-3'  
NRR110-3'  
NRR111-3'  
NRR112-3'  
NRR113-3'  
NRR114-3'  
NRR115-3'  
NRR116-3'  
NRR117-3'  
NRR118-3'  
NRR119-3'  
NRR120-3'  
NRR121-3'  
NRR122-3'  
NRR123-3'  
NRR124-3'  
NRR125-3'  
NRR126-3'  
NRR127-3'  
NRR128-3'  
NRR129-3'  
NRR130-3'  
NRR131-3'  
NRR132-3'  
NRR133-3'  
NRR134-3'  
NRR135-3'  
NRR136-3'  
NRR137-3'  
NRR138-3'  
NRR139-3'  
NRR140-3'  
NRR141-3'  
NRR142-3'  
NRR143-3'  
NRR144-3'  
NRR145-3'  
NRR146-3'  
NRR147-3'  
NRR148-3'  
NRR149-3'  
NRR150-3'  
NRR151-3'  
NRR152-3'  
NRR153-3'  
NRR154-3'  
NRR155-3'  
NRR156-3'  
NRR157-3'  
NRR158-3'  
NRR159-3'  
NRR160-3'  
NRR161-3'  
NRR162-3'  
NRR163-3'  
NRR164-3'  
NRR165-3'  
NRR166-3'  
NRR167-3'  
NRR168-3'  
NRR169-3'  
NRR170-3'  
NRR171-3'  
NRR172-3'  
NRR173-3'  
NRR174-3'  
NRR175-3'  
NRR176-3'  
NRR177-3'  
NRR178-3'  
NRR179-3'  
NRR180-3'  
NRR181-3'  
NRR182-3'  
NRR183-3'  
NRR184-3'  
NRR185-3'  
NRR186-3'  
NRR187-3'  
NRR188-3'  
NRR189-3'  
NRR190-3'  
NRR191-3'  
NRR192-3'  
NRR193-3'  
NRR194-3'  
NRR195-3'  
NRR196-3'  
NRR197-3'  
NRR198-3'  
NRR199-3'  
NRR200-3'

ANSTEC APERTURE CARD

- NOTES:
1. TRAY & CONDUIT NUMBERS ARE PRECEDED BY E2, A4 ON THIS DWG. UNLESS SHOWN OTHERWISE.
  2. RACEWAY WITH FIRST DIGIT A OR C ARE QUALITY CLASS "O" RACEWAY WITH FIRST DIGIT N ARE NON QUALITY CLASS "Q".
  3. FOR GENERAL NOTES SEE DWG 13-E-ZJC-050.
  4. TRAY NUMBERS HAVING THE FOURTH LETTER "N" (NTRV) INDICATE VERTICAL DROP-OUT TO FLOOR.
  5. ALL TRAY FITTINGS HAVE 12" RADIUS EXCEPT SPECIAL DROP-OUT FITTINGS & WHERE OTHERWISE NOTED.
  6. ALL CONDUITS THRU ROOF (EL 160'-4") ARE FOR LTG; SEE DWG NO 13-C-ZJ5-60 FOR LOCATIONS.
  7. THE FLOOR OPENINGS & FACTS ARE TO HAVE THE SAME NUMBER AS THE VERTICAL TRAY ROUTED TO IT WITH THE 2ND LETTER "S" REPLACED WITH A "K" AND "S" SUFFIX LETTER "S" ADDED.
- NUCLEAR SAFETY RELATED

VERTICAL TRAYS WITH SOLID BOTTOM & SOLID COVER

EZJ4AATSVA	EZJ4AATVA	EZJ4ACTSVB	EZJ4ACTVVA
ATSVA	ATXVA	CTSVB	CTVVA
ATSVB	ATXVB	CTSVV	CTVVV
ATSVF	ATXVF	CTSVF	CTVVF
ATSVG	ATXVG	CTSVG	CTVVG
ATSVH	ATXVH	CTSVH	CTVVH
ATSVI	ATXVI	CTSVI	CTVVI
ATSVJ	ATXVJ	CTSVJ	CTVVJ
ATSVK	ATXVK	CTSVK	CTVVK
ATSVL	ATXVL	CTSVL	CTVVL
ATSVM	ATXVM	CTSTM	CTVVM
ATSVN	ATXVN	CTSVN	CTVVN

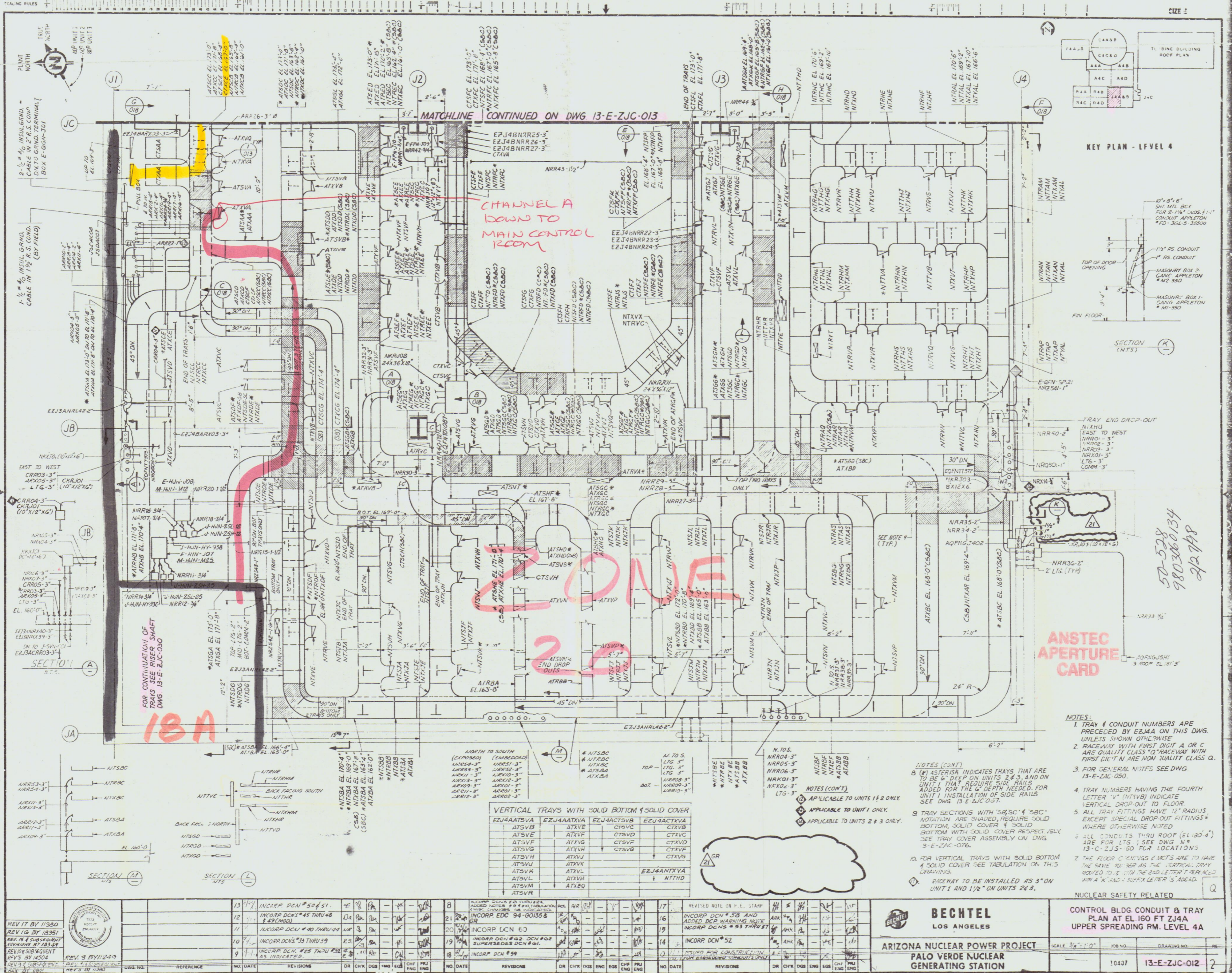
MATCHLINE CONTINUED ON DWG 13-E-ZJC-013

CHANNEL A DOWN TO MAIN CONTROL ROOM

IBN

50-528  
98031600134  
21278

MAY NOT BE SUITABLE FOR REPRODUCTION



REV	BY	DATE	DESCRIPTION	NO.	DATE	REVISIONS	DR	CHK	DGS	ENG	NO.	DATE	REVISIONS	DR	CHK	DGS	ENG
13	INCORP DCM #50451																
12	INCORP DCM #45 THRU #48 & 49 (MOD)																
11	INCORP DCU #40 THRU #44																
10	INCORP DCM #39 THRU #39																
9	INCORP DCM #25 THRU #32 AS INDICATED																
8	INCORP DCM #25 THRU #32 AS INDICATED																
21	INCORP EDC 94-00155 & 94-00156																
20	INCORP DCN 60																
19	INCORP DCN #22 DCN #02 SUPERSEDES DCN #01																
18	INCORP DCM #99																
17	REVISOR NOTE ON P.E. STAMP																
16	INCORP DCM #52 AND ADDED DCM WARNING NOTE																
15	INCORP DCM #53 THRU #57																
14	INCORP DCM #52																
13	ISSUED FOR CONSTRUCTION																

**BECHTEL**  
LOS ANGELES

ARIZONA NUCLEAR POWER PROJECT  
PALO VERDE NUCLEAR GENERATING STATION

CONTROL BLDG CONDUIT & TRAY PLAN AT EL 160 FT ZJ4A UPPER SPREADING RM. LEVEL 4A

SCALE 3/8" = 1'-0"

JOB NO. 10407 DRAWING NO. 13-E-ZJC-012

9803160068

9803160068

REV 17 BY 11/90  
REV 16 BY 11/95  
REV 15 4 SUBSEQUENT REVISIONS BY 11/95  
REV 14 SUBSEQUENT REV'S BY 11/95  
REV 13 BY 11/95  
REV 12 BY 11/95  
REV 11 BY 11/95  
REV 10 BY 11/95  
REV 9 BY 11/95  
REV 8 BY 11/95  
REV 7 BY 11/95  
REV 6 BY 11/95  
REV 5 BY 11/95  
REV 4 BY 11/95  
REV 3 BY 11/95  
REV 2 BY 11/95  
REV 1 BY 11/95