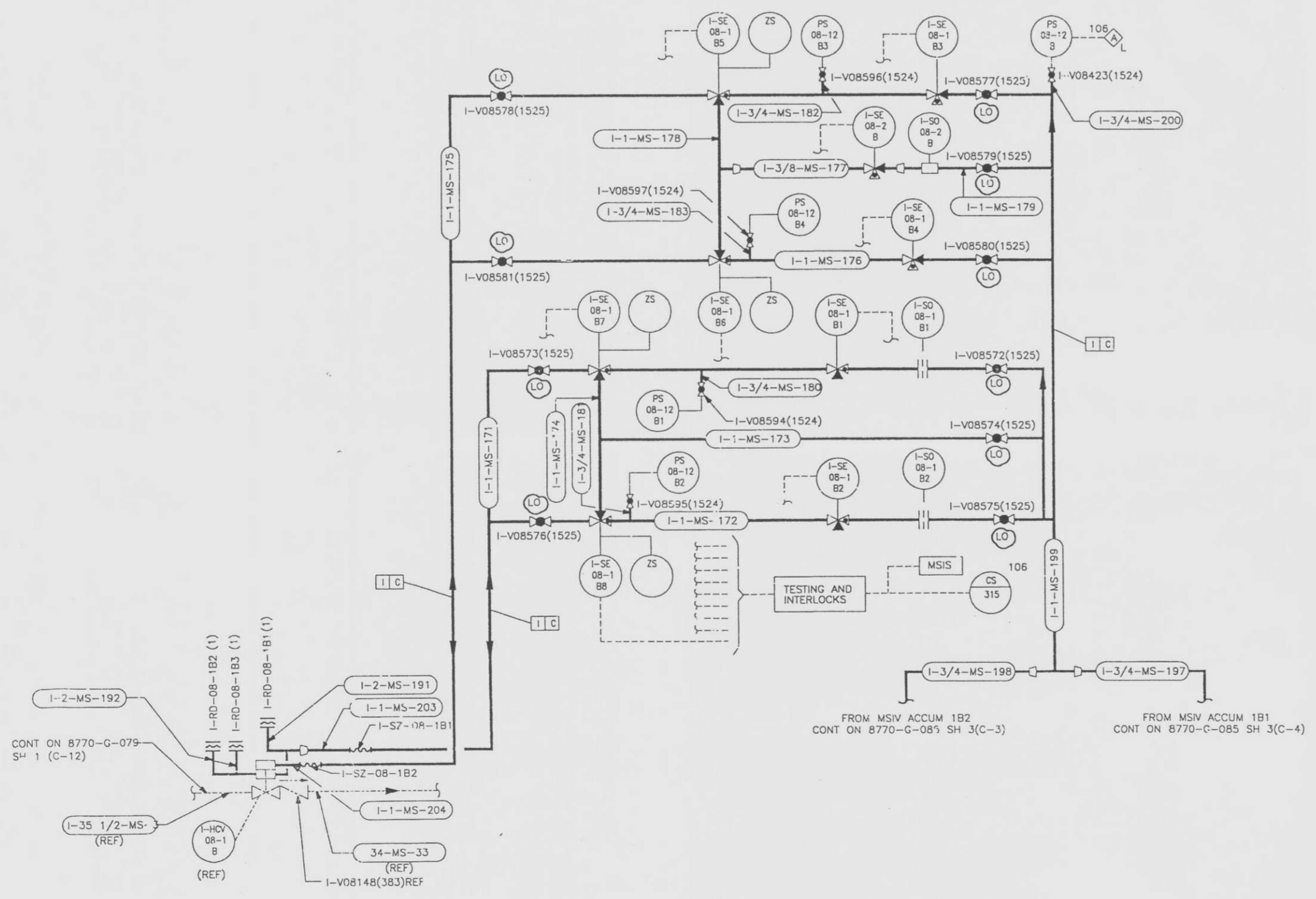
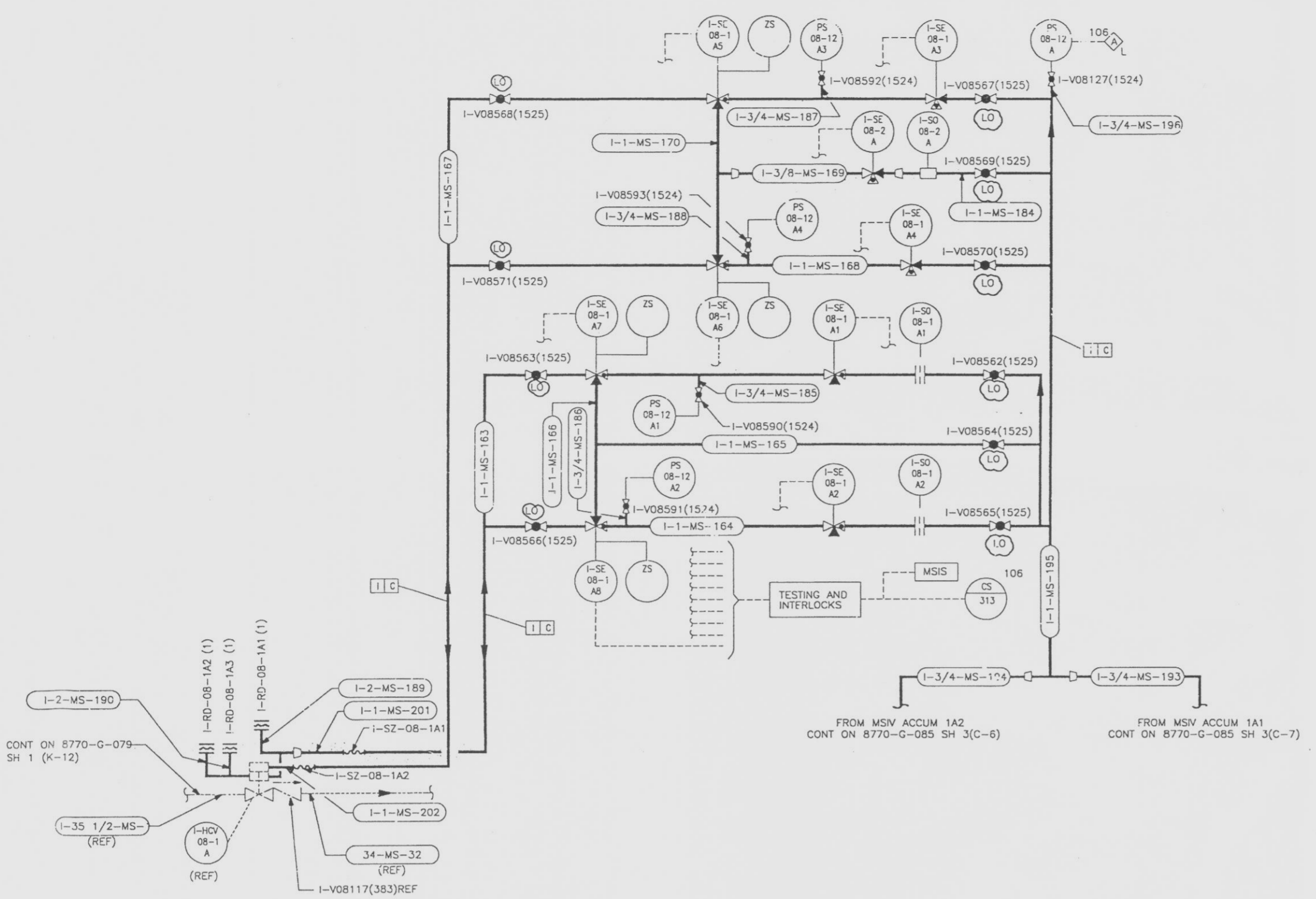
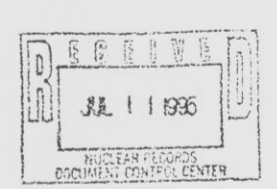


8770-G-079 SH 7

REVISIONS					
NO	DATE	DESCRIPTION	BY	CH	APPROVED
0		PC/M 082-186 INITIAL ISSUE			
1	1/10/92	APP'D PER V F RUBANO E.L. PE #43127 PC/M 437-191 REV.(N19) SHEET NO: DEL-(K18,19) NOTE GENERAL: ADD (F2,M2) GENERIC NO:(K18) PSAR FIG NO	DWC	TJ	WJP
2	2/20/92	PC/M 153-194 ADD: LO @ (B7,C4,C7,D4,D7,E4,E7,F7,I4,I7, J4,J7,K4,K7,L4, & L7)	PAB		



FOR NOTES & REFERENCE DWGS SEE 8770-G-079 SH 1



REVISIONS OF THIS DRAWING MAY REQUIRE UPDATE OF THE FOLLOWING DOCUMENTS:
A. FSAR FIG 10.1-1a

STATE OF FLORIDA
ALBERT J UGELOW
31840
REGISTERED PE
AI-PROVAL DATE:

THE DESIGN INFORMATION FOR THE CHANGES SHOWN IN THIS REVISION HAS BEEN ENGINEERED BY FLORIDA POWER & LIGHT COMPANY.
THE ORIGINAL DRAWING AND SUBSEQUENT REVISIONS THEREOF, WITH APPROVAL NAMES, INITIALS AND WITH THE PE SEAL, IF APPLICABLE ARE MAINTAINED IN THE FILES OF EBASCO SERVICES INCORPORATED.

THIS DOCUMENT IS THE PROPERTY OF EBASCO SERVICES INCORPORATED. ITS USE IS EXPRESSLY RESTRICTED BY THE TERMS OF THE CONTRACT, DATED AS OF AUGUST 10, 1988 BETWEEN EBASCO SERVICES INCORPORATED AND FLORIDA POWER & LIGHT COMPANY.

FLORIDA POWER & LIGHT COMPANY
ST LUCIE PLANT
1978 - 890 MW INSTALLATION - UNIT 1
FLOW DIACRAM
MAIN STEAM - SH NO 3

EBASCO SERVICES INCORPORATED		
SCALE: NONE	DATE: 08/11/89	
DR: MECHANICAL	H. H. CHEN	8770-G-079
DR: M. DIXON	J. J. UGELOW	SH 7
CH: P. BERGERON	WJP	VFR

FILE: USM0180.DWG

9701270078-17

E