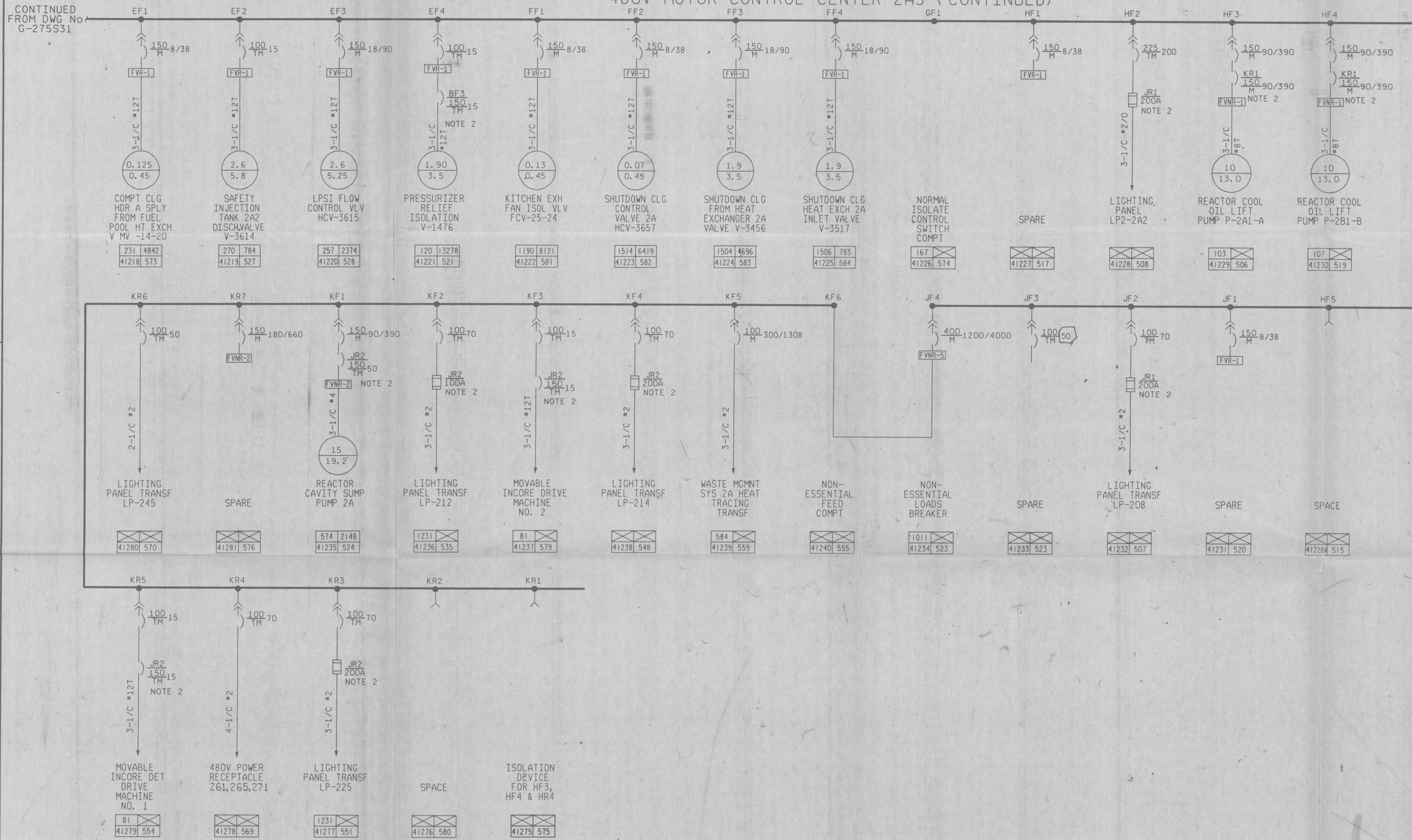


480V MOTOR CONTROL CENTER 2A5 (CONTINUED)



Docket # 50-935
 Control # 880100001-26
 Date 8/21/85 of Document
 REPLY BY DOCKET FILE

- NOTES:
- FOR GENERAL NOTES, SYMBOLS AND ABBREVIATIONS SEE INDEX DRAWING 2998-G-275SH.A
 - SECOND PROTECTIVE DEVICE IS REQUIRED TO ASSURE CIRCUIT IS IN CONFORMANCE WITH NRC REG. GUIDES 1.63 OR 1.75.

RECEIVED
 DEC 16 1985

STATE OF FLORIDA
 ALAN L SCHILDKRAUT
 2998
 Registered PE

NUCLEAR SAFETY RELATED Approval Date: 04/03/84

THE ORIGINAL DRAWING WITH APPROVAL SIGNATURES AND THE PE SEAL, AND SUBSEQUENT REVISIONS THEREOF WITH APPROVAL NAMES AND INITIALS ARE MAINTAINED IN THE FILES OF EBASCO SERVICES INCORPORATED.

INFORMATION ONLY
 VERIFY WITH A CONTROLLED COPY BEFORE USE

THIS DOCUMENT IS THE PROPERTY OF EBASCO SERVICES INCORPORATED. ITS USE IS EXPRESSLY RESTRICTED BY THE TERMS OF THE CONTRACT, DATED AS OF SEPT. 1, 1975 BETWEEN EBASCO SERVICES INCORPORATED AND FLORIDA POWER & LIGHT COMPANY.

FLORIDA POWER & LIGHT COMPANY
 ST. LUCIE PLANT
 1983-890MW (e) EXTENSION-UNIT NO. 2

480V MOTOR CONTROL CENTER
 NO. 2A5 SH.2
 ONE LINE DIAGRAM

EBASCO SERVICES INCORPORATED

SCALE NONE APPROVED DATE 04-03-84
 DIV. ELECTRICAL AL SCHILDKRAUT 2998-G-275
 DR. J MCKNIGHT KENNETH HANCOCK SHEET 32
 CH. R. ENGESSER WHL

NO	DATE	REVISION	BY	CH	APPROVED
2	11-18-85	REVISED: COMPT. JF3 PER PCM 111-285	sik	R.C.	[Signature]
1	8-6-85	REVISED: COMPT. KFI, KF2, KF3, KR1, KR2, KR3, NOTE (1) (2) (3) (4) (5) (6) (7) (8) (9) (10) PER PCM 111-285	COMPT	R.C.	[Signature]

ATTENTION: ANY REVISION TO THIS DRAWING COMPUTER AIDED DESIGN DRAFTING

SI APERTURE CARD