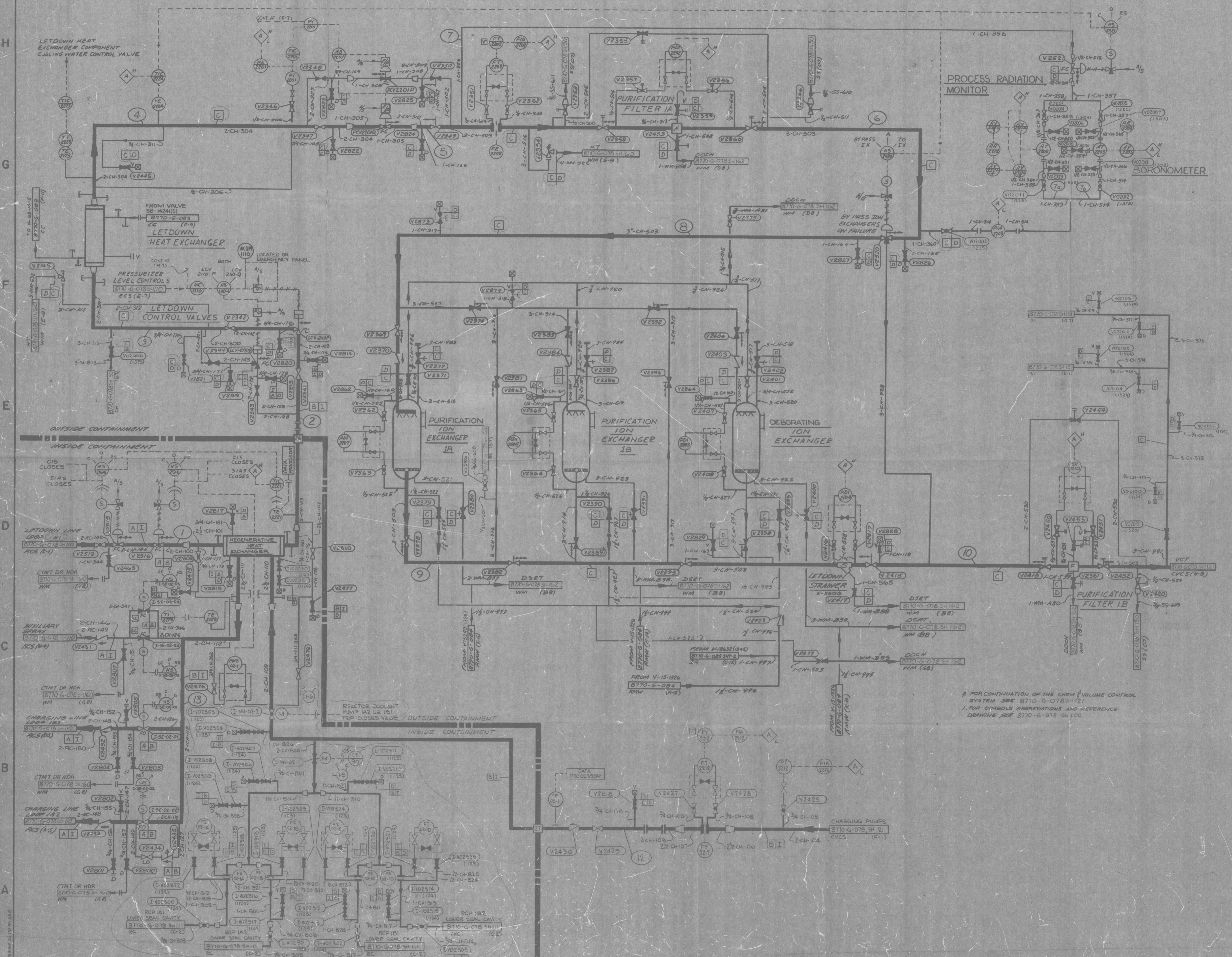


REVISIONS				
NO	DATE	DESCRIPTION	BY	APPROVED
0	7-21-81	THE FOLLOWING CHANGES MADE PRIOR TO DRAWING REVISION: REVISE TO EASCO DWG. 1155 WHERE APPLICABLE (NOT CIRCLED). REVISE TO EASCO DWG. 1155 WHERE APPLICABLE (NOT CIRCLED). REVISE TO EASCO DWG. 1155 WHERE APPLICABLE (NOT CIRCLED). REVISE TO EASCO DWG. 1155 WHERE APPLICABLE (NOT CIRCLED). REVISE TO EASCO DWG. 1155 WHERE APPLICABLE (NOT CIRCLED).		
1	4-9-82	REVISE TO EASCO DWG. 1155 WHERE APPLICABLE (NOT CIRCLED). REVISE TO EASCO DWG. 1155 WHERE APPLICABLE (NOT CIRCLED). REVISE TO EASCO DWG. 1155 WHERE APPLICABLE (NOT CIRCLED). REVISE TO EASCO DWG. 1155 WHERE APPLICABLE (NOT CIRCLED). REVISE TO EASCO DWG. 1155 WHERE APPLICABLE (NOT CIRCLED).	WJ	
2	4/6/83	REVISE TO EASCO DWG. 1155 WHERE APPLICABLE (NOT CIRCLED). REVISE TO EASCO DWG. 1155 WHERE APPLICABLE (NOT CIRCLED). REVISE TO EASCO DWG. 1155 WHERE APPLICABLE (NOT CIRCLED). REVISE TO EASCO DWG. 1155 WHERE APPLICABLE (NOT CIRCLED). REVISE TO EASCO DWG. 1155 WHERE APPLICABLE (NOT CIRCLED).	WJ	



REVISIONS				
NO	DATE	DESCRIPTION	BY	APPROVED
1	4-9-82	REVISE TO EASCO DWG. 1155 WHERE APPLICABLE (NOT CIRCLED). REVISE TO EASCO DWG. 1155 WHERE APPLICABLE (NOT CIRCLED). REVISE TO EASCO DWG. 1155 WHERE APPLICABLE (NOT CIRCLED). REVISE TO EASCO DWG. 1155 WHERE APPLICABLE (NOT CIRCLED). REVISE TO EASCO DWG. 1155 WHERE APPLICABLE (NOT CIRCLED).	WJ	
2	4/6/83	REVISE TO EASCO DWG. 1155 WHERE APPLICABLE (NOT CIRCLED). REVISE TO EASCO DWG. 1155 WHERE APPLICABLE (NOT CIRCLED). REVISE TO EASCO DWG. 1155 WHERE APPLICABLE (NOT CIRCLED). REVISE TO EASCO DWG. 1155 WHERE APPLICABLE (NOT CIRCLED). REVISE TO EASCO DWG. 1155 WHERE APPLICABLE (NOT CIRCLED).	WJ	

Docket # 50-330
Control System
Data Sheet
REGULATORY DOCKET FILE

ST. LUCIE PLANT

INFORMATION ONLY
VERIFY WITH A CONTROLLED COPY BEFORE USE.

FOR CONTINUATION OF THE CHEMICAL VOLUME CONTROL SYSTEM SEE 8770-G-078-1121
FOR SYMBOLS ABBREVIATIONS AND REFERENCE DRAWINGS SEE 8770-G-078-1100

THE DESIGN INFORMATION FOR THE CHANGES SHOWN IN THIS REVISION HAS BEEN ENGINEERED BY FLORIDA POWER & LIGHT COMPANY.

THE INFORMATION SHOWN ON REV 0 OF THIS DRAWING HAS BEEN REPRODUCED FROM COMBUSTION ENGINEERING DRAWING NO. E-19567-210-120 REV 11 (ENGRAC NUMBER 8770-54 REV 11), AND EASCO SERVICES INCORPORATED BEARS NO RESPONSIBILITY FOR THE ACCURACY OF THE INFORMATION SHOWN.

THIS DOCUMENT IS THE PROPERTY OF EASCO SERVICES INCORPORATED. ITS USE IS EXPRESSLY RESTRICTED BY THE TERMS OF THE CONTRACT, DATED AS OF AUGUST 10, 1969, BETWEEN EASCO SERVICES INCORPORATED AND FLORIDA POWER & LIGHT COMPANY.

FLORIDA POWER & LIGHT COMPANY
ST. LUCIE PLANT
1976-890,000 KW INSTALLATION (UNIT NO. 1)

CHEMICAL AND VOLUME CONTROL SYSTEM (SHEET 11)

EASCO SERVICES INCORPORATED

DATE: 7-22-81
BY: MECH: Paul J. Delay
BY: FRANCIS: 5770-G-078
BY: EASCO: 120