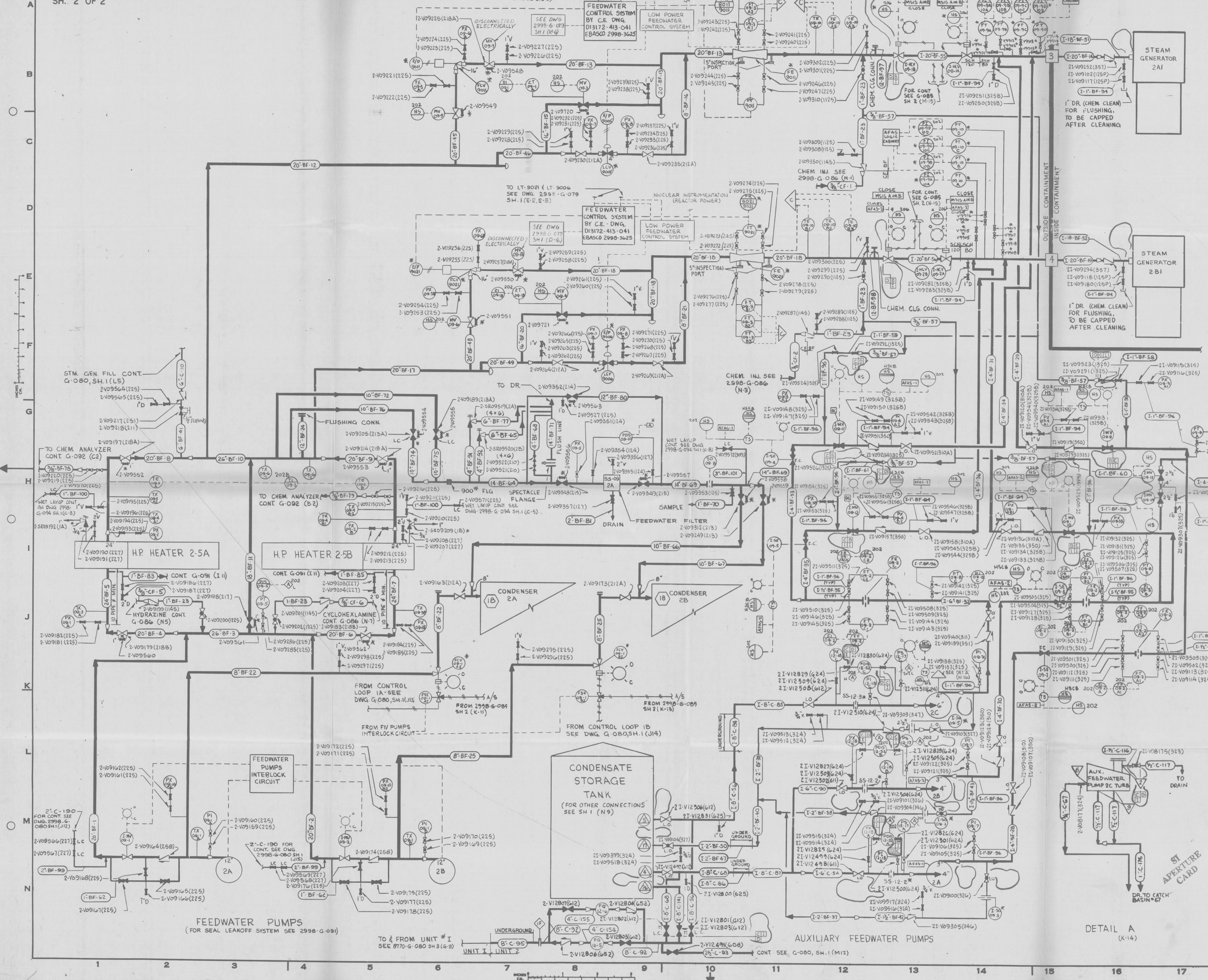


REVISIONS				
NO	DATE	DESCRIPTION	BY	APPROVED
13	8/1/86	FOR PREVIOUS REVISION BLOCKS SEE RECORD MYLAR 2998-G-080 SH 2 REV 12.	PE	HK
14	8/20/87	GEN. REV. VARIOUS VALVE OPER. ADD (N-16) DETAILS FROM 2998-G-080 SH.1; (E-D-13)(K-4) COORDINATES P/CM 14-283 ADD (4-10, H-1, I) Dwg. CONT. & COOR.	PE	MM
15	2/4/88	PC/M 052-287 ADD: (A7 THRU A11, B5) (D7 THRU D11, E5) LOW POWER FEEDWATER CONTROL SYS. GEN. REV. (A8) (E5) REF.	KPY	HK
16	4/23/88	GEN. REV. (N-1)(M-2)(N-3)(O-1)(O-2)(O-3)(O-4)(O-5)(O-6)(O-7)(O-8)(O-9)(O-10)(O-11)(O-12)(O-13)(O-14)(O-15)(O-16)(O-17)(O-18)(O-19)(O-20)(O-21)(O-22)(O-23)(O-24)(O-25)(O-26)(O-27)(O-28)(O-29)(O-30)(O-31)(O-32)(O-33)(O-34)(O-35)(O-36)(O-37)(O-38)(O-39)(O-40)(O-41)(O-42)(O-43)(O-44)(O-45)(O-46)(O-47)(O-48)(O-49)(O-50)(O-51)(O-52)(O-53)(O-54)(O-55)(O-56)(O-57)(O-58)(O-59)(O-60)(O-61)(O-62)(O-63)(O-64)(O-65)(O-66)(O-67)(O-68)(O-69)(O-70)(O-71)(O-72)(O-73)(O-74)(O-75)(O-76)(O-77)(O-78)(O-79)(O-80)(O-81)(O-82)(O-83)(O-84)(O-85)(O-86)(O-87)(O-88)(O-89)(O-90)(O-91)(O-92)(O-93)(O-94)(O-95)(O-96)(O-97)(O-98)(O-99)(O-100) TRAIL DESIGNATIONS P/CM 062-287 DEL. (TRG) ALARMS	PE	HK



**NUCLEAR SAFETY  
RELATED IN PART ONLY**

FOR NOTES & REFERENCE DRAWINGS SEE  
2998-G-080 SH. 1

Doc# 50-335  
3700000001-30  
Date: 8/2/88  
of Document  
REGULATORY FILE

**INFORMATION  
ONLY**  
VERIFY WITH A CONTROLLED  
COPY BEFORE USE.



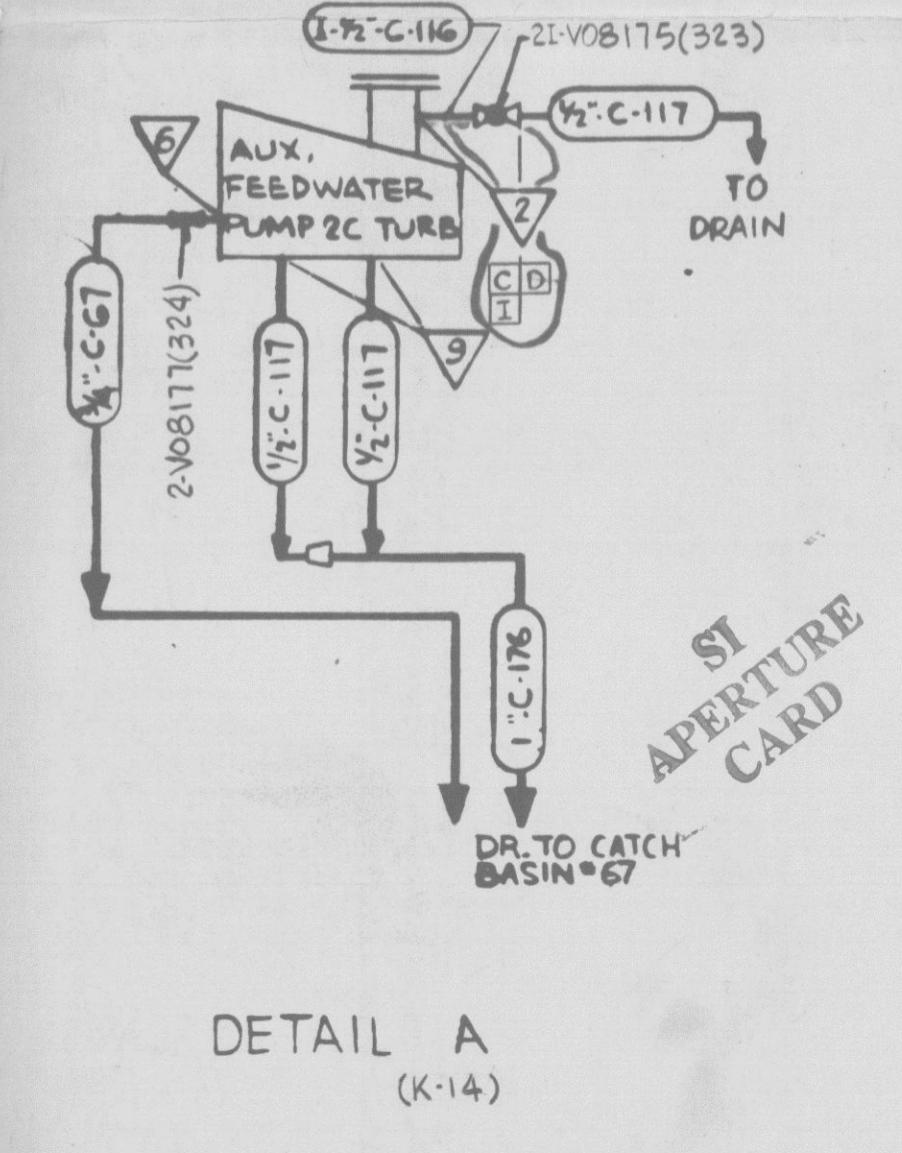
THE DESIGN INFORMATION FOR THE CHANGES SHOWN  
IN THIS REVISION HAS BEEN ENGINEERED BY FLORIDA POWER &  
LIGHT COMPANY.

THIS DOCUMENT IS THE PROPERTY OF EBASCO SERVICES  
INCORPORATED. ITS USE IS EXPRESSLY RESTRICTED BY THE  
TERMS OF THE CONTRACT, DATED AS OF SEPTEMBER 1, 1975  
BETWEEN EBASCO SERVICES INCORPORATED AND FLORIDA  
POWER & LIGHT COMPANY.

**FLORIDA POWER & LIGHT COMPANY  
ST. LUCIE PLANT  
1983 - 890 MW EXTENSION - UNIT 2  
FLOW DIAGRAM  
FEEDWATER & CONDENSATE SYSTEMS**

**EBASCO SERVICES INCORPORATED**

SCALE NONE	APPROVED: <i>[Signature]</i>	DATE: SEPT 4, 1985
DIV. MECH.	DR. BERGERON	2998-G-080
CH. KASPERIC		SH. 2 OF 2



FEEDWATER PUMPS  
(FOR SEAL LEAKOFF SYSTEM SEE 2998-G-09)

AUXILIARY FEEDWATER PUMPS

DETAIL A  
(K-14)