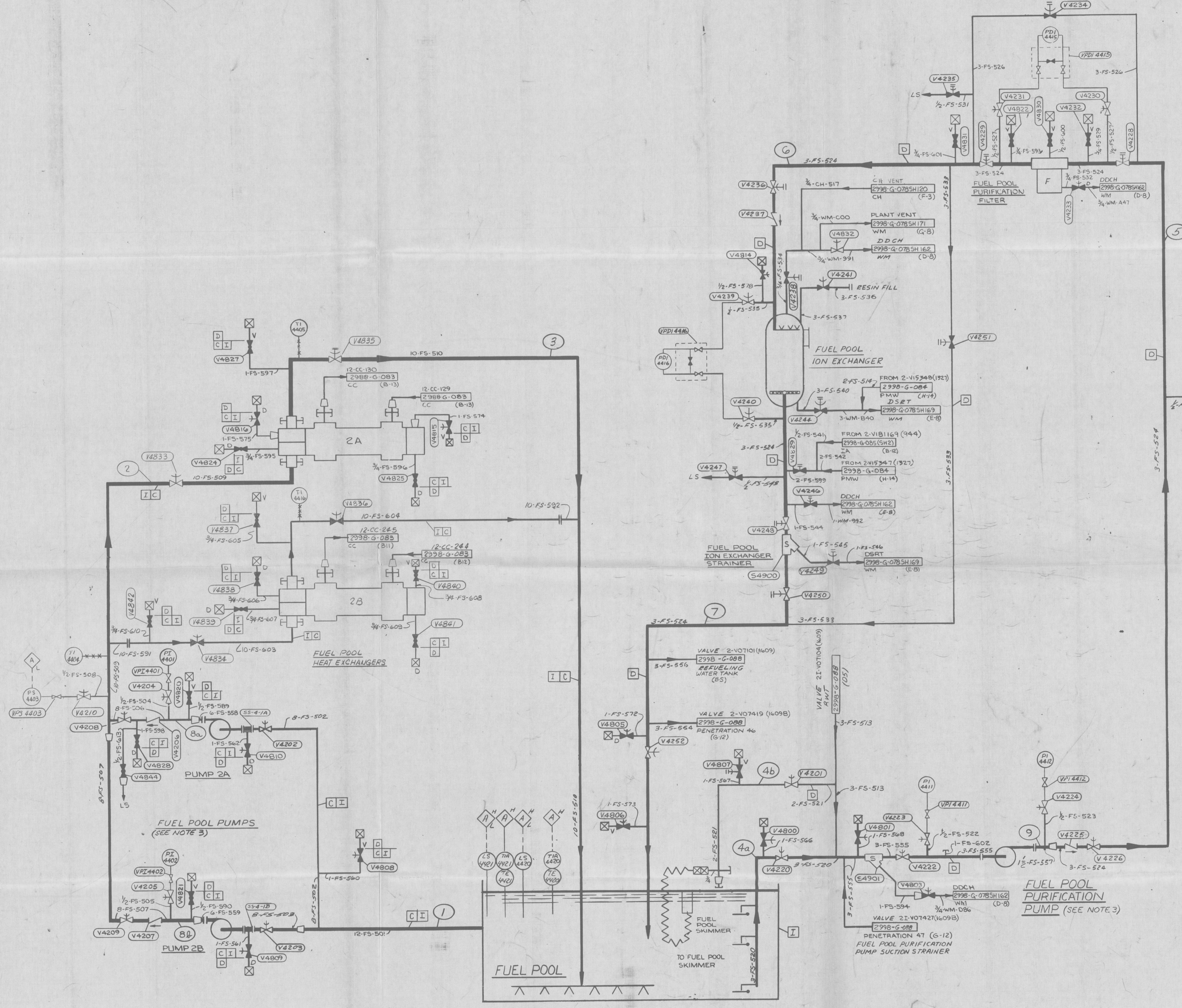


NO	DATE	DESCRIPTION	BY	CH	APPROVED
0	7/14/84	THE FOLLOWING CHANGES MADE PRIOR TO DRAWING ISSUE: GEN. C.E. DWG. NOS. TO EBASCO DWG. NOS. WHERE APPLICABLE (NOT CIRCLED). GENERAL REVISION: REVISED: (C2) NOTE # 2	AEZ	AS	[Signature]
1	11/31/84	PCM-139-283 ADD: (D 6, 7) 2B HT EXCHG & PIPING (E7) (F7) VALVE	MAc	AS	[Signature]
2	3/30/86	PCM-073-283 ADD: (F2) CONT NOTE. APPD. BY A.J. UGELOW FL. PE. #31640.	NA	HDK	[Signature]



- FOR PUMP VENTS & DRAINS, SEE DWG. 2998-G-078-5105.
- THE FUEL POOL PURIFICATION SUCTION LINE (3-FS-520) AND THE FUEL POOL COOLING RETURN LINE (10-FS-510) HAVE 1/4" AND 1/2" DRILLED HOLES RESPECTIVELY LOCATED 1'-0" (1'-2 1/2" FOR 1/4" HOLE IN 3-FS-520) BELOW THE NORMAL POOL LEVEL TO SERVE AS SYPHON BREAKERS. SYPHON BREAKER IS NOT REQUIRED FOR 3-FS-524 SINCE SUBMERGENCE IS NOT SUCH THAT EXCESSIVE DRAINAGE OF THE POOL WOULD RESULT.
- FOR SYMBOLS ABBREVIATIONS AND REFERENCE DRAWINGS, SEE DRAWING 2998-G-078 SH 100.

RECEIVED
OCT 07 1986
DOCUMENT CONTROL CENTER

INFORMATION ONLY
VERIFY WITH A CONTROLLED COPY BEFORE USE.

THE INFORMATION SHOWN ON REV 0 OF THIS DRAWING HAS BEEN REPRODUCED FROM COMBUSTION ENGINEERING DRAWING NO. E-13172-SIO-140, REV 19 (EMORAC NUMBER 2998-53 - REV 19), AND EBASCO SERVICES INCORPORATED BEARS NO RESPONSIBILITY FOR THE ACCURACY OF THE INFORMATION SHOWN.

THIS DOCUMENT IS THE PROPERTY OF EBASCO SERVICES INCORPORATED. ITS USE IS EXPRESSLY RESTRICTED BY THE TERMS OF THE CONTRACT, DATED AS OF SEPTEMBER 1, 1975 BETWEEN EBASCO SERVICES INCORPORATED AND FLORIDA POWER & LIGHT COMPANY.

FLORIDA POWER & LIGHT COMPANY
ST LUCIE PLANT
1983 890 MW(e) EXTENSION - UNIT NO 2
**FLOW DIAGRAM
FUEL POOL SYSTEM**

EBASCO SERVICES INCORPORATED	
SCALE: N/A	APPROVED: [Signature]
DIV. MECH	DATE: 5/16/84
DR. AEZ	2998-G-078
CH. SWENSON	SHEET 140

**NUCLEAR SAFETY
RELATED IN PART ONLY**

ST
APERTURE
CARD