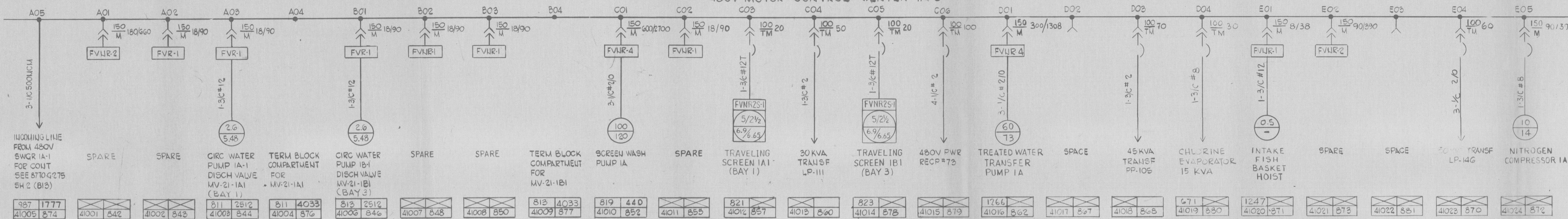
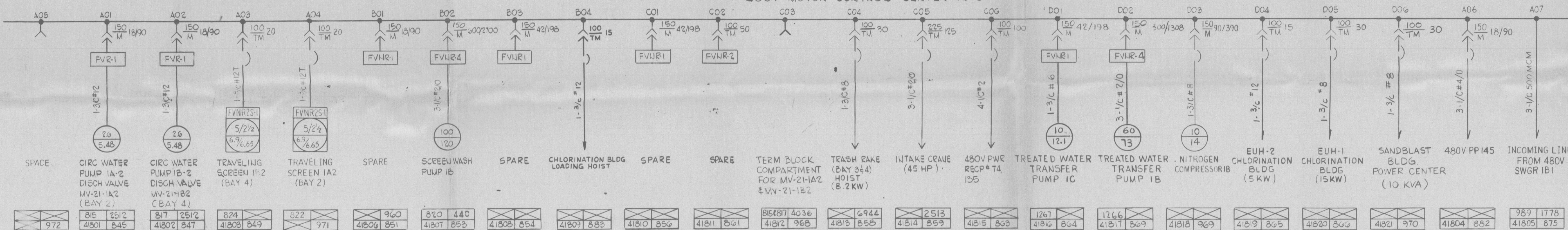


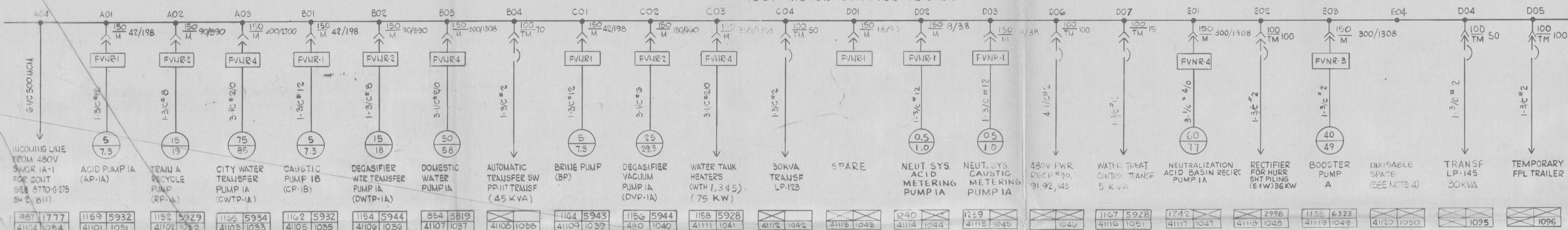
480V MOTOR CONTROL CENTER IA-3



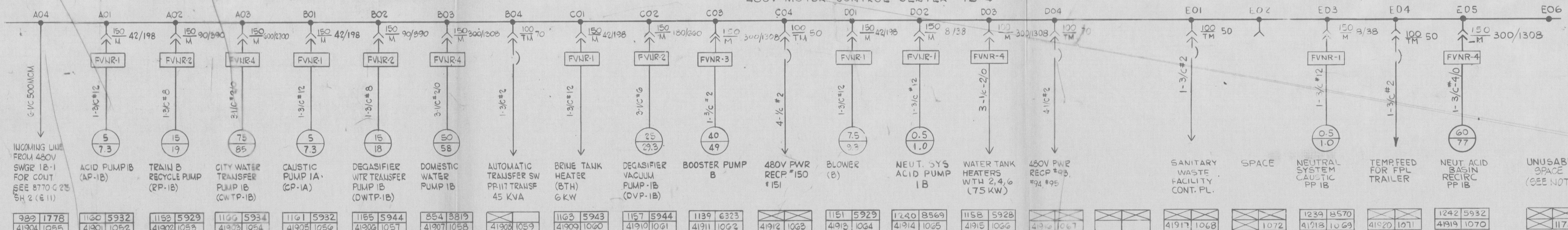
480V MOTOR CONTROL CENTER IB-3



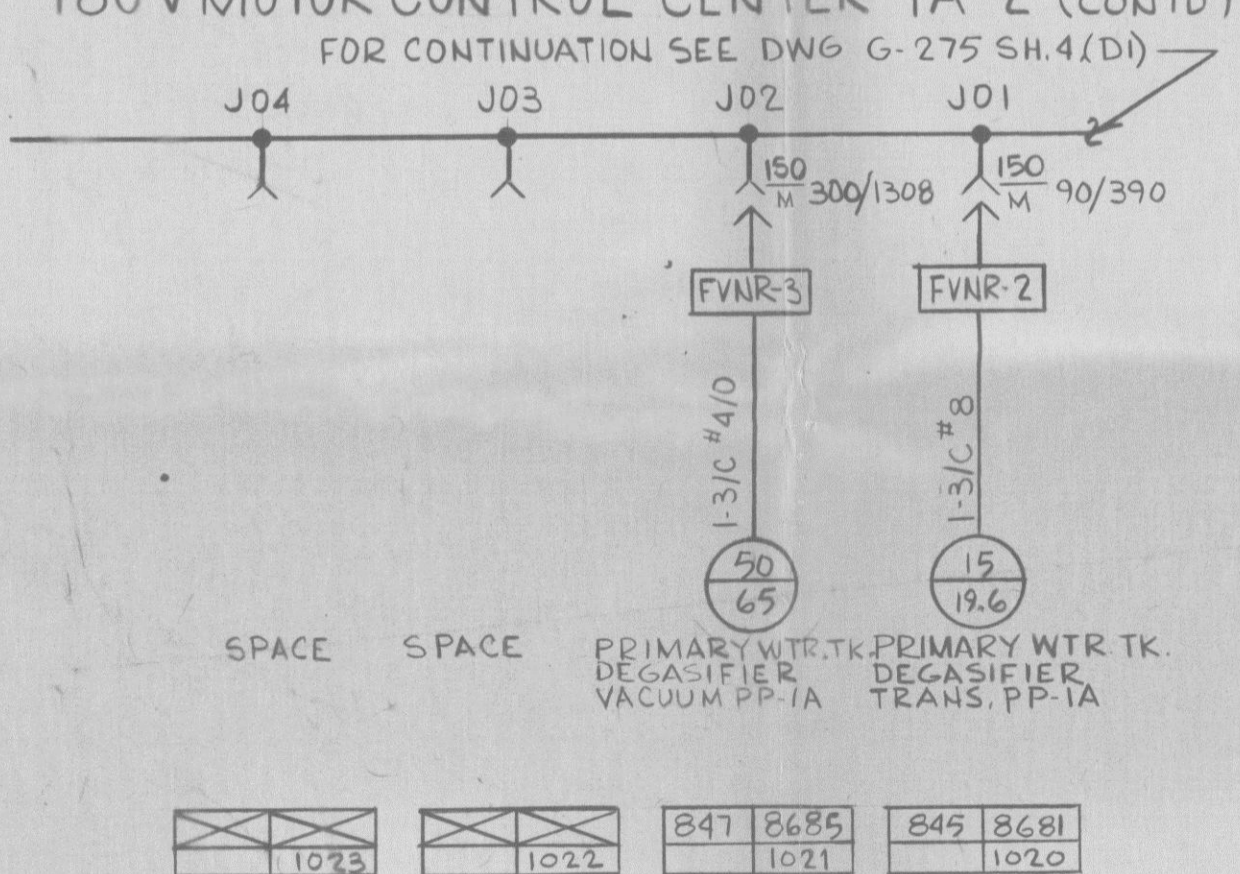
480V MOTOR CONTROL CENTER IA-4



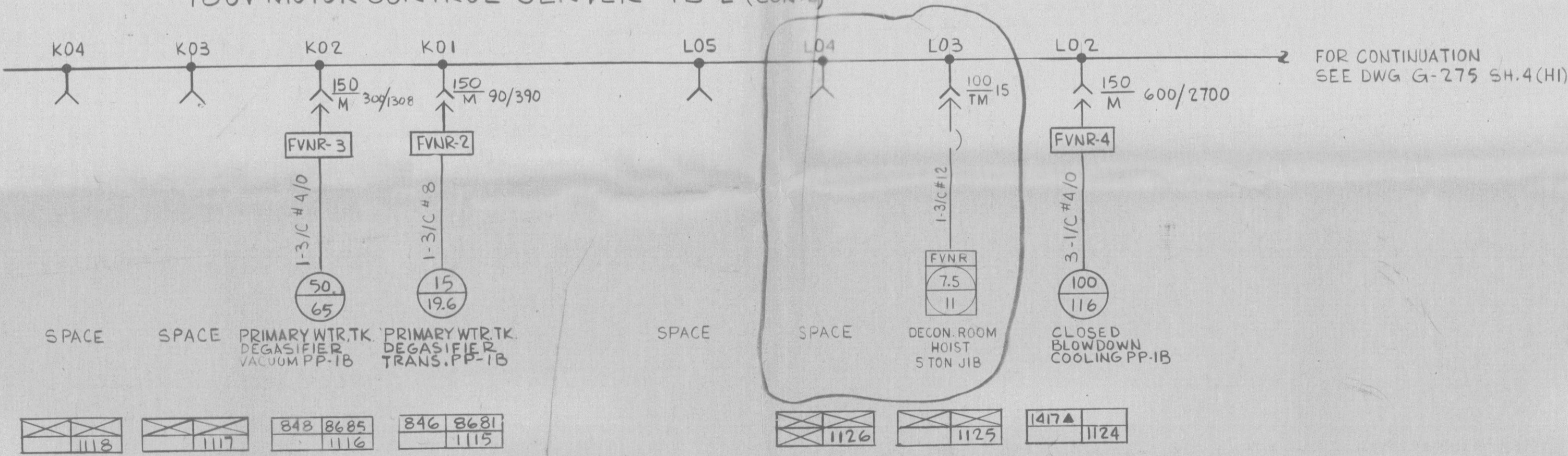
480V MOTOR CONTROL CENTER IB-4



480V MOTOR CONTROL CENTER IA-2 (CONTD)

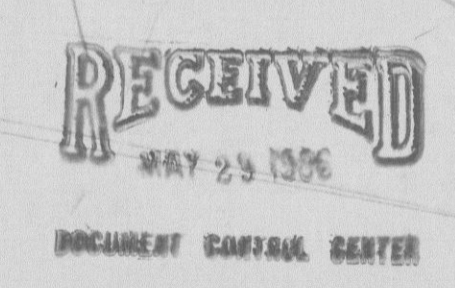


480V MOTOR CONTROL CENTER IB-2 (CONTD)

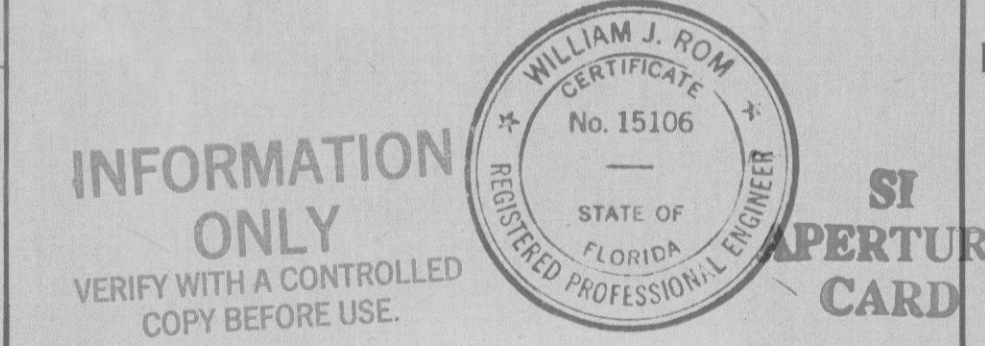


NOTES
1. FOR SYMBOLS AND ADDITIONAL NOTES, SEE DWG 8770-G-275-SH.1
2. FOR REFERENCE DRAWINGS, SEE DWG 8770-G-275-SH.2
3. SEE DWG 3509-B-3-27
4. ALTERNATE SPACE FOR INCOMING LINE FEEDER.

Doc # 50-338
Date: 8/28/85
REGULATORY DOCKET FILE



Revision table with columns for No., Date, Revision, and Description of changes.



INFORMATION ONLY
VERIFY WITH A CONTROLLED COPY BEFORE USE.
THIS DOCUMENT IS THE PROPERTY OF EBASCO SERVICES INCORPORATED...

FLORIDA POWER & LIGHT COMPANY
ST LUCIE PLANT
480V MOTOR CONTROL CENTERS
ONE LINE WIRING DIAGRAM SH. 5
EBASCO SERVICES INCORPORATED
APPROVED: [Signature] DATE: 9.18.84
DW: ELEC DR: G. SMITH BY: CH. APPROVED: [Signature]