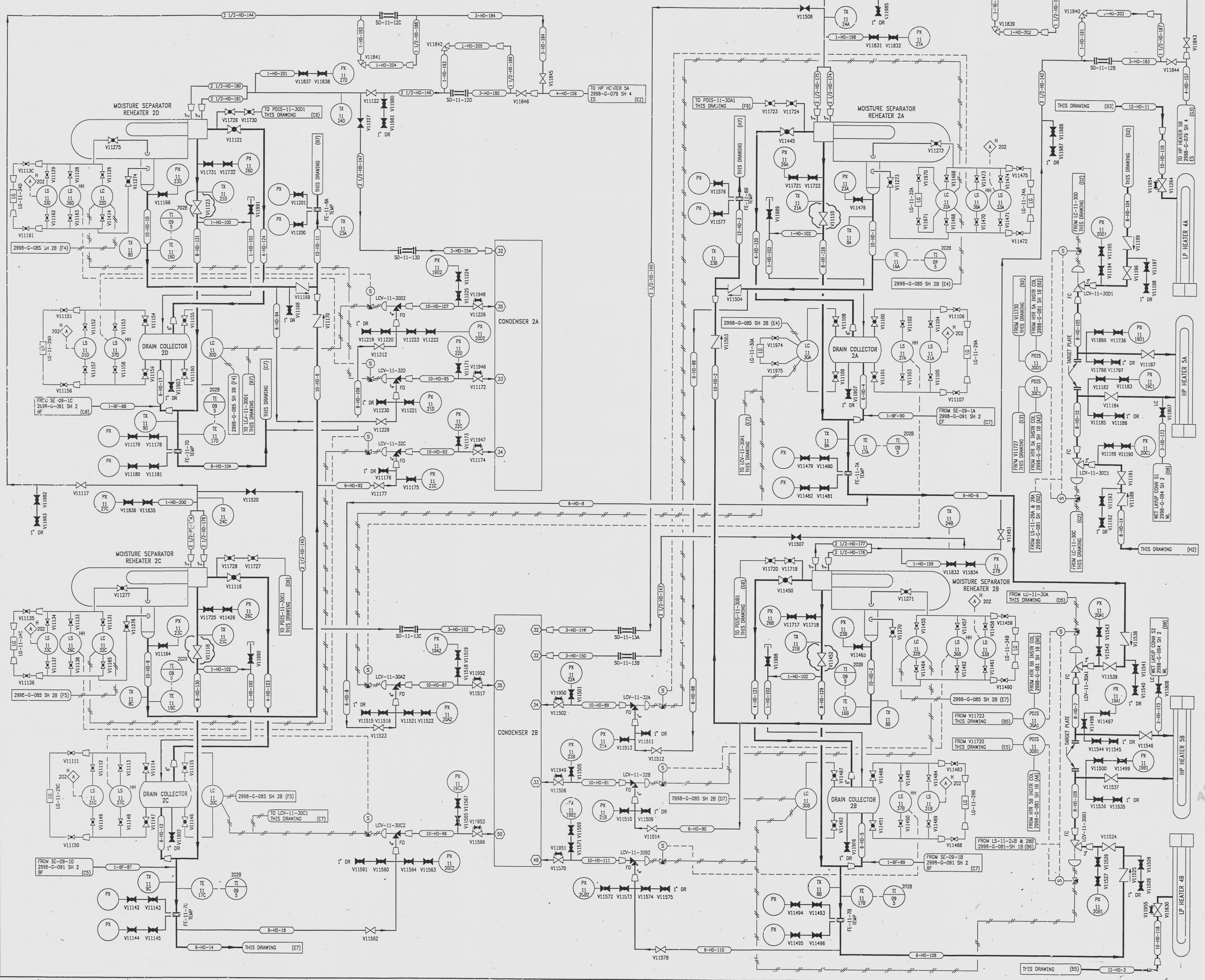


REVISIONS					
NO	DATE	DESCRIPTION	BY	CH	APPROVED
15	7/24/95		GM	RR	JUZ
DCR-SM-94-057: REDRAWN					
16	10/24/95		RR	HS	TWS
PCM-013-195 REV. (C1) (C1)					
17	8-9-96		GM	LL	983
CRN 96027-5025 DEL: (B2,C5,F2 & F5) LO					



- REFERENCE DRAWINGS
- PIPING, VALVES & INSTRUMENT SYMBOLS 2998-G-078 SH 100
 - VALVE LIST 2998-A-051
 - LINE LIST 2998-B-052
 - VALVE OPERATIONAL NUMBER INDEX 2998-B-057A
 - LIST OF DRAWINGS 2998-A-145
 - INSTRUMENT INSTALLATION DETAILS 2998-B-231
 - INSTRUMENT LIST 2998-B-270C

INFORMATION ONLY
VERIFY WITH A CONTROLLED COPY BEFORE USE.



NOTE: THIS DRAWING IS MADE FROM REV. 14 OF DRAWING 2998-G-081 SH 2

REVISION OF THIS DRAWING MAY REQUIRE UPDATE OF THE FOLLOWING DOCUMENT: FSAR FIGURE 10.1-3b

FLORIDA POWER & LIGHT COMPANY
ST LUCIE PLANT
1983 - 890 MWe EXTENSION - UNIT 2
FLOW DIAGRAM
HEATER DRAIN & VENT SYSTEM

RAYTHEON ENGINEERS & CONSTRUCTORS, INC	
SCALE: NONE	APPROVAL DATE:
DNV: MECH	2998-G-081
DR: D. CHEFFI	SHEET
CH: P. BERGERON	2

DRAWING NUMBER
2998-G-081
SH 2

DRAWING NUMBER

DRAWING NUMBER

DRAWING NUMBER